

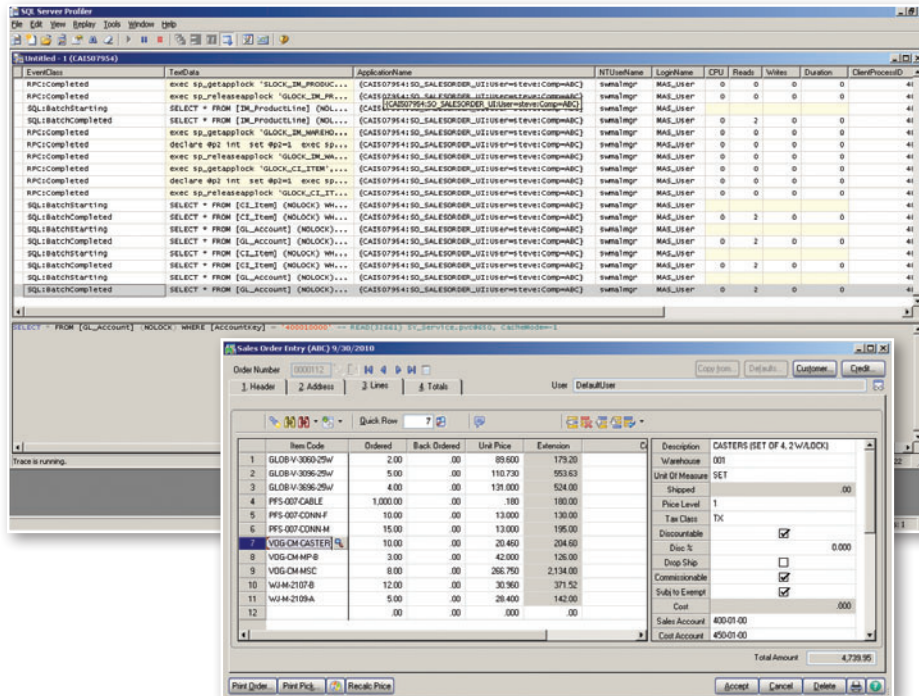
Sage 100 Premium ERP

Overview

Sage 100 Premium ERP (formerly Sage ERP MAS 200 SQL) provides a superior ERP solution with robust features and functionality and the efficiency of Microsoft® SQL Server.® Combine a broad range of modules to build an ERP system optimized for your business, and the resulting integrated system will be more powerful than the individual components. Offering scalability, flexibility, integration, and reporting using SQL Server, Sage 100 Premium ERP leverages the ease of use, simplicity, and maturity of the Sage 100 ERP product line.

Sage 100 ERP streamlines processes and enhances workflows by dynamically linking information, workflows, and communication channels. Easily access business-critical information the way you want to see it and turn data into actionable knowledge. Save time, money, and the environment by going green with Paperless Office features and utilize electronic document email, fax, and storage and retrieval capabilities. Access up-to-the-minute key performance indicators (KPIs) from the desktop and drill down into details. Personalize the system with customizations that survive upgrades. Efficiently process federal and state e-filing and reporting. Effectively manage inventory, securely process credit cards, optimize shipping costs, track shipments, and process returns.

Sage 100 ERP capabilities include scheduling and maintenance, ad-hoc reporting, and powerful data integrity tools. Integrations take place at the application level, using eBusiness Web Services or Business Objects® to ensure smooth and successful updates. Coordinate your whole business from finance and sales to light assembly and distribution, through business intelligence and integrations.



AVAILABLE MODULES*

Accounting, Financial, and HR

- Accounts Payable
- Accounts Receivable
- Bank Reconciliation
- General Ledger
- Federal and State eFiling and Reporting
- Sage Fixed Assets—Depreciation
- HRMS Payroll and HRMS

Business Intelligence and Reporting

- Business Insights Dashboard
- Business Insights Explorer
- Business Intelligence
- SAP® Crystal Reports for Sage 100 ERP

Customer Relationship Management

- Sage CRM
- Customization, Integration, and Data Imports
- Custom Office
- eBusiness Web Services
- Paperless Office
- Visual Integrator

Distribution and Light Assembly

- Bar Code
- Bill of Materials
- Credit Card Processing
- Inventory Management
- Purchase Order
- Return Merchandise Authorization
- Sales Order
- Sales Tax by Avalara

* Microsoft SQL Server Licenses for use with Sage 100 Premium ERP are available from Sage.



www.blytheco.com



Features

Accounting and Financial

At the core of every Sage 100 ERP system are the accounting and financial modules: General Ledger, Accounts Payable, Accounts Receivable, and Bank Reconciliation. Utilize the built-in go-green Paperless Office capabilities to quickly and easily email, fax, store, and retrieve documents electronically. Streamline your 1099 eFiling and Reporting for Accounts Payable to print and mail or e-file to the appropriate state and federal agencies. These financial modules provide an accounting foundation for your business that optimizes your productivity. Combine the features and functionality from additional modules to build the unique needs of your business so you can work the way you want to.

Business Intelligence and Reporting

Designed to increase productivity and enhance functionality, these easy-to-use tools create an all-encompassing information management system for your business. Provided with Sage 100 ERP, Business Insights Dashboard and Business Insights Explorer empower your teams with up-to-the-minute information when you need it, the way you want to see it. Business Insights Explorer, designed for any user to quickly generate a report or view information, provides executives with answers to “must-know” inquiries. Ideal for high-level managers such as CEOs, CFOs, and sales directors, Business Insights Dashboard enables you to view vital company information. Get a wide-angle view with Sage 100 ERP Business Intelligence, using the provided templates and the familiar Microsoft Excel® to get the most of your reporting. Create and attach reporting trees to report designer layouts, consolidate data from multiple companies, divisions, and data sources, even reach into Sage CRM and HRMS. Using SAP® Crystal Reports for Sage 100 ERP, create and customize presentation-quality meaningful reports quickly and easily.

Customer Account Management

Designed with you in mind, Sage CRM builds upon the Sage 100 ERP system’s core functionality by providing you with the ability to communicate more effectively, collaborate better internally, and compete in today’s marketplace. Total campaign management, Microsoft Exchange server integration, an Interactive Dashboard, report charts, and a fully integrated eMarketing solution empower your staff to execute high-quality, targeted, end-to-end e-marketing and drip marketing campaigns quickly and easily. Automatically track open, click, and bounce rates so you can calculate accurate ROI and deliver “hot leads” to your sales team. Link multiple data feeds on a single screen with the Interactive Dashboard. Using data “widgets” the freestyle interactive dashboard gives you complete flexibility. Widgets can be resized and repositioned anywhere on the screen so your data feeds are presented the way you want to see them.

Light Assembly and Distribution

The Sage 100 ERP light assembly and distribution solutions give you the power to cut costs, build profits, and improve customer service and loyalty. Combined, these offer a series of features that help maximize efficiency throughout all stages of the process. This includes the ability to create multilevel bills of materials and produce accurate and informative reports. And, when goods are finished, they are instantly available in Inventory Management or Sales Order for seamless transactions. The distribution and light assembly modules include: Inventory Management, Bill of Materials, Sales Order, Sales Tax by Avalara, Purchase Order, Return Merchandise Authorization, Bar Code, and Credit Card Processing. Among the long list of functions you can perform is the ability to track inventory at multiple warehouses and maintain detailed sales histories for each customer, product, and product line.

Customization, Integration, and Data Imports

Personalize screens to streamline data entry on an uncluttered and user-friendly grid, launch related tasks, and establish smart memos that attach to information and follow a process through the system. Add user-defined fields (UDFs) and tables (UDTs), custom buttons, and more. Custom Office allows you to create customizations that survive upgrades. You can rearrange screens and add new or hide existing fields. User-defined scripts can be created to change the behavior of Sage 100 ERP to satisfy unique business requirements by tying these scripts to specific events and run with or without user interaction, such as clicking a button. Use Business Objects and eBusiness Web Services for integrations to keep the total cost of ownership (TCO) low and to ensure minimal impact from applying updates or when upgrading. Ensure enforcement of your business rules, security settings, and consistent API interfaces for integration with third-party applications. Data imports for Sage 100 ERP can be made using Visual Integrator.



Blytheco • 800-425.9843 • solutions@blytheco.com • www.blytheco.com