



Sage MAS 90 and MAS 200 3.6 Enhancements

Some of the Significant New Features and Benefits

GENERAL ENHANCEMENTS

WEB-FRIENDLY LAUNCHER

- As the core of the Sage MAS 90 and MAS 200 product line, the new Launcher boasts a unique welcome page that displays in HTML format and can be used to browse the Internet. It's an instant starting point for useful information.
- In addition to a powerful new search engine that allows you to find the information you need, there are a multitude of new tools, sections and tasks that make viewing your data easier than ever.
- Customizable toolbars provide one click access to key MAS 90 or MAS 200 functions. You can also create shortcuts to other essential business applications.
- A new My Tasks menu provides a quick means for accessing the areas of MAS 90 or MAS 200 that you use most often.

SALES ORDER SHIPPING SYSTEM

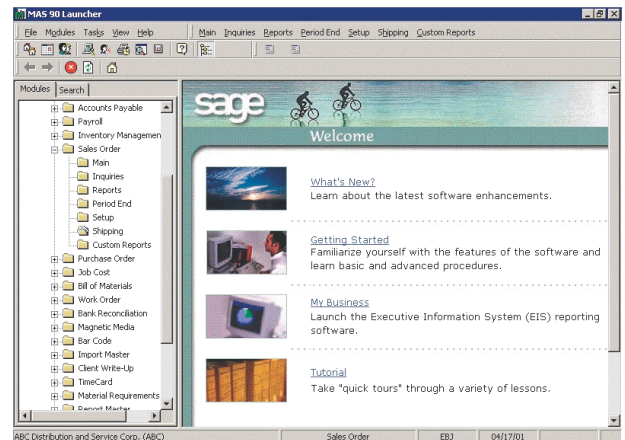
- The Sales Order module now includes an optional shipping feature that helps streamline the shipping process. Here's how it works: 1) Enter a sales order as usual in Sales Order Entry; 2) On the Shipping Data Entry screen simply scan or enter the items being shipped, to record the quantity; 3) Once the shipment has been entered, the warehouse worker picks and packs the order, prints the shipping document, prints the shipping labels, and finally records the package tracking numbers.
- An additional option allows you to identify the contents of each package or simply list the number of packages sent for the order.
- If scanners are your Shipping Data Entry method, you can activate an option to automatically increment the item quantity for each scan.
- Limit the Shipping Entry functions your warehouse personnel are permitted to use.
- Once the Shipper ID and Sales Order number are entered on the Lines panel, the shipper can see all the items from the

sales order and record quantities shipped or backordered for each item.

- Drop Ship items are automatically considered "backordered" and will not appear in Shipping Data Entry.
- Four ways to print a shipping document: automatically when the order is accepted, by selecting Quick Print or the Print button in Shipping Data Entry, or through the Packing List Printing or Invoice Printing menu options.
- A Shipping Exception report will automatically print if one of the following changes were made to the order during Shipping Data Entry: an existing item was replaced with an alternate item, an over shipment was entered, the warehouse on the Lines panel was changed, or the ship to location code, ship via, ship zone, ship weight, or freight amount was changed.
- Reprint master packing lists and/or individual box content packing lists for your selected order.

STAR SHIP MODULE

- This new third-party application, built by V-Technologies, is integrated seamlessly. When combined with the new pick, pack and ship feature in the standard Sales Order module, StarShip has the potential to reduce shipping and shipping related costs.
- The basic StarShip module processes shipments using UPS, FedEx, and FedEx Ground (formerly RPS). Optionally you can purchase functionality for processing shipments via U.S. Postal Service, Airborne Express, Spee-Dee Delivery Service and a User-Definable Carrier.
- Here's how it works: 1) When your warehouse workers finish filling in the Shipping Data Entry screens, they click



the StarShip button at the bottom of the Shipping panel; 2) The StarShip entry screen pops up and is populated with all the critical customer and shipping fields; 3) If a scale is integrated, the worker places the package on the scale and freight is automatically calculated; 4) Optionally, the warehouse worker could select different carriers to shop for the best rate; 5) When data entry is complete, the user prints the shipping label from StarShip and accepts the shipment; 6) Pressing the Save button triggers StarShip to write the carrier tracking information and freight charges back to the Shipping/Invoice Data Entry files in MAS 90 or MAS 200.

SALES ORDER AND PURCHASE ORDER ENHANCEMENTS

- The Sales Order module now features a Quantity Shipped Inquiry function that provides a realistic quantity on hand. For distributors determining if an item, earmarked for later delivery, could be shipped to fulfill an incoming customer request, two new fields have been added to the Item Status in Sales Order Entry and Invoice Data Entry— "Quantity in Shipping" and "On Hand Less in Shipping."

- An “Include Backordered lines on Back Order Reports” checkbox has been added to Sales Order Options. When selected, backordered lines from invoices are included on the Backorder Fill Report when it prints.
- Since you may have open orders with backorder lines in your system when you install version 3.6, we’ve added an option to the Sales Order Rebuild Sort Files routine that reads through your sales orders and flags backordered lines, so they can immediately appear on your Backorder report.
- A new field within Sales Order Entry allows you to place a drop-shipped item on backorder.
- In some cases, customers want to change the order quantity on their backorders. To help facilitate this process, the Original Shipped Quantity will be retained when the backordered amount is changed.
- A new entry field within the Data Entry Lines screen, labeled “Quick Line,” greatly simplifies line editing on individual orders.
- A new checkbox in the Sales Order Quote History report selection screen allows you to optionally print extended descriptions when printing the report in detail.
- After selecting the Additional button during line entry in Sales Order Entry and Sales Order Invoice Entry, new fields display the General Ledger account number descriptions for Sales and Cost of Goods Sold.
- Inventory Item Maintenance/Inquiry will allow you to decide, on an item-by-item basis, whether or not kits will automatically be exploded upon data entry or if the system should continue to prompt the user during Sales Order entry routines.
- If existing customers want to change their settings for items already established in inventory, they can. In Inventory Product Line Maintenance you can set the default explode kit option to be used during creation of new kit items or with the apply feature for existing kit items.
- Sales Order, e-Business Manager and Remote Salesperson routines check this option for kit type items and respond accordingly.

SQL SERVER AVAILABILITY

The following modules will now be available in Sage MAS 200 for SQL Server:

- Act Link
- Bar Code
- Business Alerts
- e-Business Manager (all applets)
- Job Cost
- DynaLink, the link to SalesLogix
- Time Card
- Work Order Processing

E-BUSINESS MANAGER CUSTOMIZATION

- With this release of e-Business Manager, customization capabilities have been expanded substantially. You can now add fields to all e-Business Manager pages. This includes the ability to add any field from the data tables that drive a particular template.
- We’ve also introduced UDF support for e-Business Manager, so your customers can now see your unique fields while they are placing their orders.
- Most buttons and navigational elements may be defined as either a graphical object or text from within MAS 90 or MAS 200. You can specify what image or text to display. Related to this, you can display the quantity available as either in stock or out of stock, instead of displaying the actual quantity.
- Add numerous attachments to Inventory items. These attachments can be Word, PDF, text documents, images, links to a Web page or any of up to eight user-defined types.

GLOBAL USABILITY ENHANCEMENTS

PREFERENCES

- A new Preferences Selection box optionally sets the accounting date to the current workstation calendar date (from workstation OS) when a new session is started.
- When the “Auto Set Accounting Module Date from System Date” is selected, the accounting date will be set from the workstation’s date without user intervention.
- A new Preferences option warns you if the accounting date falls outside the Current and One Future Period for some modules. An optional password can be entered to override the warning.

ADVANCED LOOKUP ENGINE (ALE)

- Up to 99 company and user views (customizations) can be defined for each lookup. All features previously available for the single customization are now available for each view.
- The ALE (Advanced Lookup Engine) also now boasts the ability to drill to inquiry programs from certain lookups. This opens up vital information directly from entry programs without having to launch another program.
- Accounts Receivable and Accounts Payable Invoice History Lookups may now be customized.

CUSTOMIZER

- In Customizer, you can now add new tabs to forms that use folders. This feature provides space for UDFs with out rearranging multiple fields.
- A new keystroke undo function has been added, quickly erasing mistakes that occur while customizing forms.
- Batch-entry Dialog boxes to enter a batch number for data-entry programs such as Accounts Receivable Invoice Data Entry, and Sales Order Invoice Entry can now be customized.
- Additional graphic types of attachments can now be displayed, including JPEGs, TIFFs, etc.



Sage Software, Inc.
56 Technology Drive
Irvine, CA 92618-2301
800-854-3415
www.us.sage.com

©2001, Sage Software, Inc. All rights reserved. Reproduction in whole or in part without permission is prohibited. The capabilities, system requirements and/or compatibility with third-party products described herein are subject to change without notice. Contact Sage Software for current information. Sage is a U.K. trademark of The Sage Group plc. Sage MAS 90 and Sage MAS 200 are trademarks of Sage Software, Inc. Other product names used herein are trademarks or registered trademarks of their respective owners.