
Multi Company Combined Direct Deposit File

PR-1118

Overview

This Extended Solution to the standard MAS 90 MAS 200 Payroll module adds a Combined Direct Deposit File Generation utility to the Direct Deposit menu.



Sage Software Extended Solution PR-1017: *Direct Deposit Interface* must be installed and enabled for this Extended Solution to function.

Installation

Before installing this Extended Solution, please verify that the version level(s) printed on the CD label are the same as the version level(s) of the MAS 90 MAS 200 module(s) you are using. For further information, please see the Upgrades and Compatibility section below. Check your Shipping Manifest for a complete list of Extended Solutions shipped.

For detailed installation instructions, please refer to the Sage website at:

http://support.sagesoftware.com/mas/extended_solutions/main.cfm

Installing Your Extended Solutions under Windows From a CD

If you have the *autorun* function turned on for your PC, the installation program will start up automatically. If not, find the **autorun.exe** file on your CD-ROM drive and double-click it to start the installation program. Follow the on-screen instructions.

From the Sage FTP site

When your Extended Solution is ready to be downloaded, you will receive an email from 'extendedsolutions.na@sage.com' telling you that it is ready. The email will contain the Customer Name, Cross Reference, a case-sensitive Password, a link via which you can download your Extended Solution, instructions, and a Shipping Manifest. If you have any problems with this order, please email extendedsolutions.na@sage.com and we will assist you during normal business hours.

Extended Solutions Control Center

Installing any Extended Solution will add an Extended Solutions Control Center to the MAS 90 MAS 200 Library Master Utilities menu. When you open the Control Center, the following options will be available:

- Extended Solutions Manuals
- Remove Extended Solutions
- Unlock Extended Solutions
- Merge Installation Files
- Extended Solutions Setup options

Extended Solutions

Custom Office

If you customize your MAS 90 MAS 200, then you must run the Update Utility *every time* you install this Extended Solution.

Setup

Once the disk is installed, you will need to access the Payroll options screen. After the standard MAS 90 MAS 200 option screens have been displayed, a Setup screen for this Extended Solution will appear. Check the 'Enable Extended Solution' box to activate this Extended Solution (Figure 1). The manual for this Extended Solution, if it has been installed, can be viewed by clicking the 'Manual' button next to the 'Enable Extended Solution' check box. It can also be viewed via the Extended Solutions Control Center (see Installation, above).

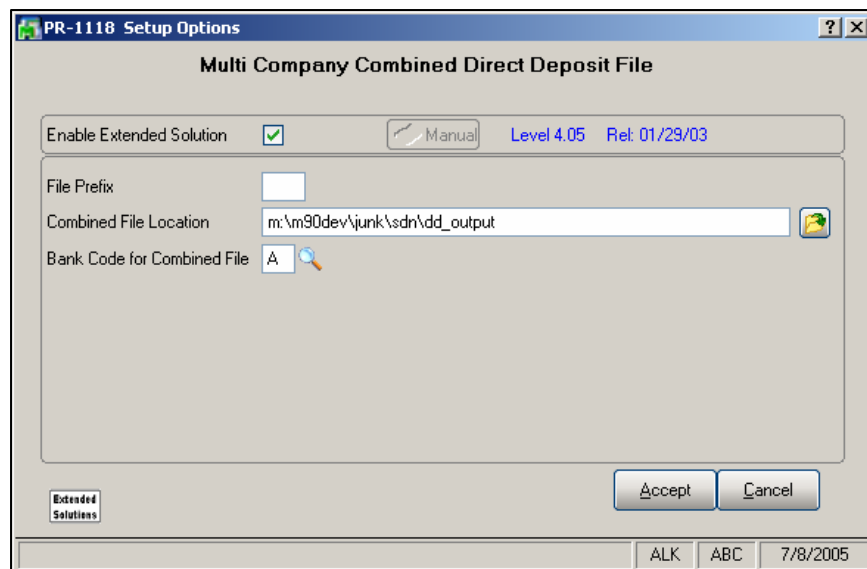


Figure 1

Answer the following prompts:

FILE PREFIX: Enter a three-character file prefix.

COMBINED FILE LOCATION: Enter a location to place the combined file.

BANK CODE FOR COMBINED FILE: Enter the Bank Code to be used for the 1 and 9 records in the combined file.

You should visit this Setup screen after each upgrade or reinstallation of this Extended Solution.

Operation

This Extended Solution adds a Combined Direct Deposit File Generation utility to the Direct Deposit menu (Figure 2).

Selection	All	Starting	Ending
Effective Date	<input checked="" type="checkbox"/>		12/31/99
Created Date	<input checked="" type="checkbox"/>		12/31/99
Combined Date	<input checked="" type="checkbox"/>		12/31/99

Figure 2

Select one of the following options in the Batches to Be Combined drop box:

- Only Batches Never Combined
- Only Batches Previously Combined
- All Batches

'Effective Date' and 'Created Date' will always be available. 'Combined Date' will only be available if 'Only Batches Previously Combined' or 'All Batches' have been selected.

This program will read SY_ACH file that was created by PR-1017 and use this file to combine all specified .ACH files from the selection screen into one file. Each .ACH file will be read, and any records that are not types 5, 6 or 8 will be discarded. A new 1 and 9 record will be created. The 1 record will use all of the financial institution information from the Bank Code specified in Setup (i.e., Routing Number, Destination, Origin, etc.). The 9 record will total all values of the combined batches and will also use any financial institution information necessary from the Bank Code specified in Setup. As combining takes place, a 'Combined Date' will be added to SY_ACH; if there is a previously existing date, it will be overwritten.

The file will be named with the three-character File Prefix from Setup + YYMMDDHHMMSS + ".ACH" and placed in the directory specified in Setup.

Upgrades and Compatibility

The installation CD is labeled with the version of the MAS 90 MAS 200 module for which this Extended Solution was prepared. This Extended Solution will check its compatibility with the appropriate MAS 90 MAS 200 modules and will be disabled if an incompatibility is found. If you upgrade your MAS 90 MAS 200 modules, this Extended Solution must be upgraded as well. Your MAS 90 MAS 200 dealer can supply this upgrade.

