
Wage Expense Account Override by Line

PR-1057

Overview

This Extended Solution to the Payroll module will enable the Payroll Wage Expense Account to be overridden on a line by line basis. The Payroll Data Entry Audit Report has been enhanced to detail the changes made during Payroll data entry.



Additional functionality is available if you have TC-1011: *User Defined Fields for TimeCard* installed and enabled.

Installation

Before installing this Extended Solution, please verify that the version level(s) printed on the CD label are the same as the version level(s) of the MAS 90 MAS 200 module(s) you are using. For further information, please see the Upgrades and Compatibility section below. Check your Shipping Manifest for a complete list of Extended Solutions shipped.

For detailed installation instructions, please refer to the Sage website at:

http://support.sagesoftware.com/mas/extended_solutions/main.cfm

Installing Your Extended Solutions under Windows From a CD

If you have the *autorun* function turned on for your PC, the installation program will start up automatically. If not, find the **autorun.exe** file on your CD-ROM drive and double-click it to start the installation program. Follow the on-screen instructions.

From the Sage FTP site

When your Extended Solution is ready to be downloaded, you will receive an email from 'extendedsolutions.na@sage.com' telling you that it is ready. The email will contain the Customer Name, Cross Reference, a case-sensitive Password, a link via which you can download your Extended Solution, instructions and a Shipping Manifest. If you have any problems with this order, please email extendedsolutions.na@sage.com and we will assist you during normal business hours.

Extended Solutions Control Center

Installing any Extended Solution will add an Extended Solutions Control Center to the MAS 90 MAS 200 Library Master Utilities menu. When you open the Control Center, the following options will be available:

- Extended Solutions Manuals
- Remove Extended Solutions
- Unlock Extended Solutions
- Merge Installation Files
- Extended Solutions Setup options

Custom Office

If you customize your MAS 90 MAS 200, then you must run the Update Utility *every time* you install this Extended Solution.

Setup

Once the disk is installed, you will need to access the Payroll Setup option screen. After the option screens have been displayed, a Setup screen for this Extended Solution will appear. Check the 'Enable Extended Solution' box to activate this Extended Solution (Figure 1). The manual for this Extended Solution, if it has been installed, can be viewed by clicking the 'Manual' button next to the 'Enable Extended Solution' check box. It can also be viewed via the Extended Solutions Control Center (see Installation, above).

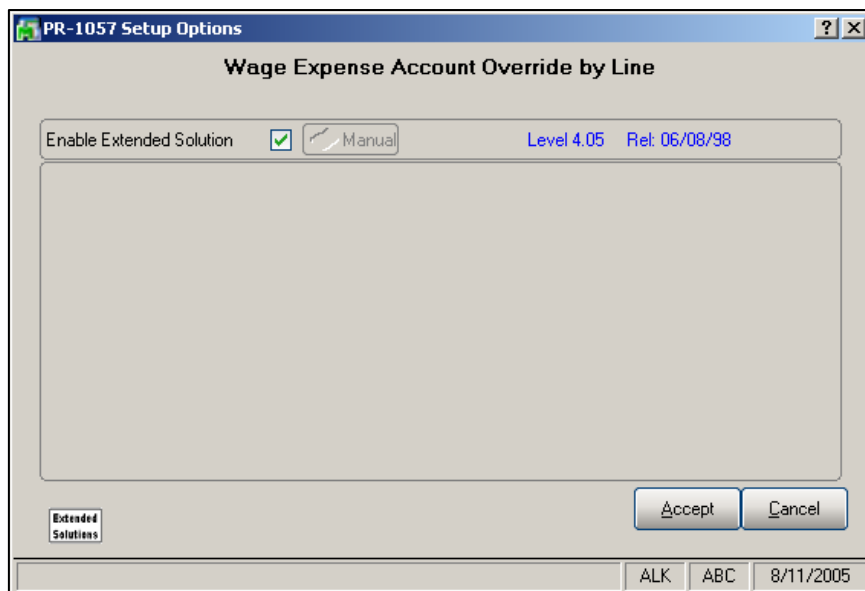


Figure 1

The following prompt will appear if you have Sage Software Extended Solution TC-1011: *User Defined Fields for TimeCard* installed and enabled:

TC-1011 WAGE EXPENSE ACCOUNT OVERRIDE UDF: Enter the 'G/L Account' type TC-1011 UDF set up as the Wage Expense Account Override UDF. A warning message will appear if you do not enter a 'G/L Account' type UDF. In order to use this option, the TimeCard option 'Detail Level for Payroll Entries (N/D/F)' must be set to 'F' for full detail. You must set up a type 'G/L Account' UDF in TC-1011. Please refer to the TC-1011 manual regarding setup of this UDF.

You should visit this Setup screen after each upgrade or reinstallation of this Extended Solution.

Extended Solutions

Operation

A new field for the 'Override Expense Account' has been added to the lines section of Payroll Data Entry when entering an earning line (Figure 2). To access this field, click the 'More' button on the Payroll Data Entry Screen, Tab 2 (Figure 3). You may maintain the tab stop for the new field as you would with any other standard field. If the field is left blank, the standard expense account will be used. You may enter an override Wage Expense Account Number. The account number entered must be an on-file G/L Account number. During the Check Register Update process the Wage Expense Account Number is first determined in the usual manner (i.e., from Earnings Code Maintenance and Department Maintenance).

Figure 2

Line	E/D	Cd	ST	Loc	Dept	Labor Description	W/C Code	Rate	Hours	Amount
1	E	01	WI		11	0000001 Regular Warehouseperson		13.850	.00	.00
2	E	09	WI		11	0000001 Bonus Warehouseperson				500.00
3	D	03				Health Insur				60.00

Hours	Earnings	Vol Deduct	Taxes	Net Amount
.00	500.00	185.00	.00	315.00

Figure 3

If you have TC-1011: *User Defined Fields for TimeCard* installed and enabled, the override G/L Account Number will be pulled from TimeCard when you answer 'Y' to the 'Include TimeCard Data?' prompt in Payroll Check Data Entry. The override Account must have been entered in the 'G/L Account' type UDF in TimeCard Data Entry specified in Setup.

Extended Solutions

The Payroll Data Entry Audit Report (Figure 4) will print the override account number (if entered) for each line.

EMPLOYEE ENT NUMBER	NO.	NAME	CODE DESCRIPTION	ST	LOC	WC	DP	CODE	RATE	HOURS	AMOUNT		
0000105	1	JENKINS, ALLEN											
E 01 Regular											120.00		
E 02 Overtime											22.50		
E TE Tips Earned											45.00		
EARNINGS TOTAL:										9.00	367.50		
RECEIPTS:											2,000.00	ALLOCATED TIPS:	00
FED FEDERAL WITHHOLDING											15.40		
FED F.I.C.A.											22.79		
FED MEDICARE WHI											5.53		
WI STATE WITHHOLDING											14.70		
TAX TOTAL:										58.22			
ACCT: 12345											309.28		
DIRECT DEPOSIT TOTAL:										309.28			

Figure 4

Report Master/Visual Integrator

The files listed below have been added or changed in the Data Dictionary by this Extended Solution for Visual Integrator purposes.

New File: PR.DATAENT *Field:* #WAGE_EXP_ACCNT

The Data Dictionary may contain other files and data fields that are not available without their corresponding Sage Software Extended Solutions installed.

Note: The Report Master module is not supported in MAS 200 SQL.

Crystal Reports and the ODBC Dictionary

The files listed below have been added or changed in the ODBC Dictionaries by this Extended Solution for Crystal Reports purposes.

File: PR_23 *Description:* Perpt History Detail *Fields:* ExpenseAccountOverride

Be aware that the ODBC Dictionaries may contain other files and data fields that will be unavailable without their corresponding Extended Solutions installed.

Extended Solutions

What's New

With the 07-02-04 release:

- Wildcards for G/L Account Numbers were removed in 4.0.

Upgrades and Compatibility

The installation CD is labeled with the version of the MAS 90 MAS 200 module for which this Extended Solution was prepared. This Extended Solution will check its compatibility with the appropriate MAS 90 MAS 200 modules and will be disabled if an incompatibility is found. If you upgrade your MAS 90 MAS 200 modules, this Extended Solution must be upgraded as well. Your MAS 90 MAS 200 dealer can supply this upgrade.

Documentation

Only changes made to the standard operation of MAS 90 MAS 200 have been documented in this manual. Operations not documented in this manual are standard procedures of MAS 90 MAS 200 processing. Standard MAS 90 MAS 200 processes, data entry screens, inquiry screens, reports, updates, etc., have not been changed unless addressed in this document.

Parts of this document may refer to the *Specific Purpose Rule*. When referenced, the described feature was developed for a specific client to its specifications and may not conform to generally accepted MAS 90 MAS 200 standards and procedures. These features may or may not benefit you in your application of MAS 90 MAS 200.

Acknowledgments

© 2005 Sage Software, Inc. All rights reserved. Sage Software, MAS 90 and MAS 200 are registered trademarks or trademarks of Sage Software, Inc. All other trademarks are the property of their respective owners.

Blytheco LLC The Premier Provider of Effective Business Software Solutions

<p>Regional Offices</p> <p>Orange County, California 23151 Mill Creek Drive Laguna Hills, California 92653 Phone: (949) 583.9500 Toll Free: (800) 425.9843 Fax: (949) 583.0649 www.blytheco.com</p>	<p>Atlanta, Georgia 1100 Johnson Ferry Road, Ste. 450 Atlanta, Georgia 30342 Phone: (404) 841.6240 Toll Free: (800) 455.1368 Fax: (404) 841.6243 solutions@blytheco.com</p>
---	--

Sage Software Business Partner of the Year

Complete Sage Software Solutions
Sage MAS 500 • Sage MAS 200 • Sage MAS 90
Sage BusinessWorks • Sage SalesLogix CRM • ACT! by Sage
Sage ABRA HRMS • Sage FAS • Sage MIP Fund Accounting & Fundraising

Offices in these cities & states:
Atlanta, GA • Chicago, IL • Los Angeles, CA • Orange County, CA • Tampa, FL
Colorado • Minnesota • Missouri • New Jersey • Ohio • Oklahoma • Pennsylvania
• South Carolina • Tennessee • Texas • Washington

National Presence - Local Touch