

Consolidated Posting to Job Cost

PR-1037

Overview

This Extended Solution to the Payroll module allows Wage Expense postings to the Daily Job Transaction Register to be consolidated by Job Number/Cost Code/Employee Number or by Job Number/Cost Code.

Installation

Before installing this Extended Solution, please verify that the version level(s) printed on the CD label are the same as the version level(s) of the MAS 90 MAS 200 module(s) you are using. For further information, please see the Upgrades and Compatibility section below. Check your Shipping Manifest for a complete list of Extended Solutions shipped.

For detailed installation instructions, please refer to the Sage website at:
http://support.sagesoftware.com/mas/extended_solutions/main.cfm

Installing Your Extended Solutions under Windows From a CD

If you have the *autorun* function turned on for your PC, the installation program will start up automatically. If not, find the **autorun.exe** file on your CD-ROM drive and double-click it to start the installation program. Follow the on-screen instructions.

From the Sage FTP site

When your Extended Solution is ready to be downloaded, you will receive an email from 'extendedsolutions.na@sage.com' telling you that it is ready. The email will contain the Customer Name, Cross Reference, a case-sensitive Password, a link via which you can download your Extended Solution, instructions and a Shipping Manifest. If you have any problems with this order, please email extendedsolutions.na@sage.com and we will assist you during normal business hours.

Extended Solutions Control Center

Installing any Extended Solution will add an Extended Solutions Control Center to the MAS 90 MAS 200 Library Master Utilities menu. When you open the Control Center, the following options will be available:

- Extended Solutions Manuals
- Remove Extended Solutions
- Unlock Extended Solutions
- Merge Installation Files
- Extended Solutions Setup options

Extended Solutions

Custom Office

If you customize your MAS 90 MAS 200, then you must run the Update Utility *every time* you install this Extended Solution.

Setup

Once the disk is installed, you will need to access the Payroll Setup menu option screen. After the option screens have been displayed, a Setup screen for this Extended Solution will appear. Check the 'Enable Extended Solution' box to activate this Extended Solution (Figure 1). The manual for this Extended Solution, if it has been installed, can be viewed by clicking the 'Manual' button next to the 'Enable Extended Solution' check box. It can also be viewed via the Extended Solutions Control Center (see Installation, above).

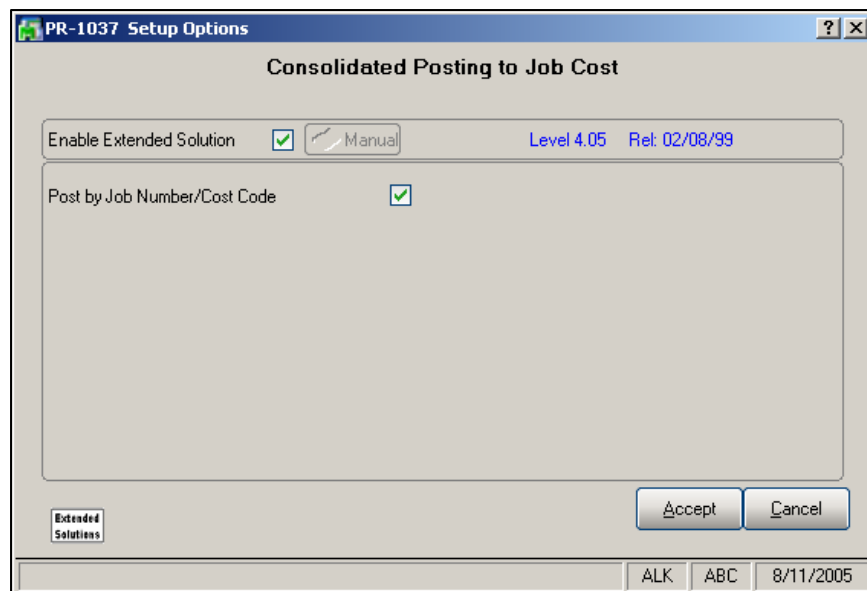


Figure 1

Answer the following prompt:

POST BY JOB NO/COST CODE: If you check this box, then Job Cost posting will be consolidated to post by Job Number/Cost Code instead of Job Number/Cost Code/Employee Number.

You should visit this Setup screen after each upgrade or reinstallation of this Extended Solution.

Operation

When enabled, this Extended Solution allows Wage Expense postings from both Payroll and TimeCard, to be combined into one transaction when posting to the Daily Job Transaction Register. If you checked the 'Post By Job No/Cost Code' box in Setup, then Job Cost posting

Extended Solutions

will be consolidated by Job Number/Cost Code. Otherwise, the Job Cost posting will be consolidated by Job Number/Cost Code/Employee Number.



Only wage expense postings are consolidated. Burden postings are not included in the consolidation.

Upgrades and Compatibility

The installation CD is labeled with the version of the MAS 90 MAS 200 module for which this Extended Solution was prepared. This Extended Solution will check its compatibility with the appropriate MAS 90 MAS 200 modules and will be disabled if an incompatibility is found. If you upgrade your MAS 90 MAS 200 modules, this Extended Solution must be upgraded as well. Your MAS 90 MAS 200 dealer can supply this upgrade.

Documentation

Only changes made to the standard operation of MAS 90 MAS 200 have been documented in this manual. Operations not documented in this manual are standard procedures of MAS 90 MAS 200 processing. Standard MAS 90 MAS 200 processes, data entry screens, inquiry screens, reports, updates, etc., have not been changed unless addressed in this document.

Parts of this document may refer to the *Specific Purpose Rule*. When referenced, the described feature was developed for a specific client to its specifications and may not conform to generally accepted MAS 90 MAS 200 standards and procedures. These features may or may not benefit you in your application of MAS 90 MAS 200.

Acknowledgments

© 2005 Sage Software, Inc. All rights reserved. Sage Software, MAS 90 and MAS 200 are registered trademarks or trademarks of Sage Software, Inc. All other trademarks are the property of their respective owners.

Blytheco LLC The Premier Provider of Effective Business Software Solutions

Regional Offices

<p>Orange County, California 23161 Mill Creek Drive Laguna Hills, California 92653 Phone: (949) 583.9500 Toll Free: (800) 425.9843 Fax: (949) 583.0649 www.blytheco.com</p>	<p>Atlanta, Georgia 1100 Johnson Ferry Road, Ste. 450 Atlanta, Georgia 30342 Phone: (404) 841.6240 Toll Free: (800) 455.1368 Fax: (404) 841.6243 solutions@blytheco.com</p>
--	--

Sage Software Business Partner of the Year

Complete Sage Software Solutions
Sage MAS 500 • Sage MAS 200 • Sage MAS 90
Sage BusinessWorks • Sage SalesLogix CRM • ACT! by Sage
Sage ABRA HRMS • Sage FAS • Sage MIP Fund Accounting & Fundraising

Offices in these cities & states:
Atlanta, GA • Chicago, IL • Los Angeles, CA • Orange County, CA • Tampa, FL
Colorado • Minnesota • Missouri • New Jersey • Ohio • Oklahoma • Pennsylvania
• South Carolina • Tennessee • Texas • Washington

National Presence - Local Touch