

Extended Solutions

Custom Office

If you customize your MAS 90 MAS 200, then you must run the Update Utility *every time* you install this Extended Solution.

Setup

Once the disk is installed, you will need to access the Purchase Order Setup menu option screen. After the standard MAS 90 MAS 200 option screens have been displayed, a Setup screen for this Extended Solution will appear. Check the 'Enable Extended Solution' box to activate this Extended Solution (Figure 1). The manual for this Extended Solution, if it has been installed, can be viewed by clicking the 'Manual' button next to the 'Enable Extended Solution' check box. It can also be viewed via the Extended Solutions Control Center (see Installation, above).

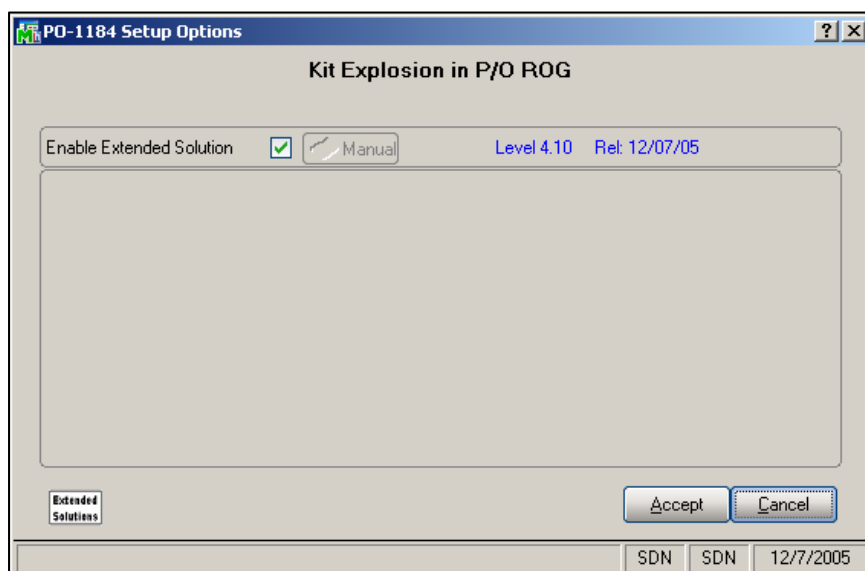


Figure 1

You should visit this Setup screen after each upgrade or reinstallation of this Extended Solution.

Operation**IM Sales Kit Maintenance**

A Cost button has been added to the Component Item lines in IM Sales Kit Maintenance (Figure 2). When clicked, it will present you with a Unit Cost field (Figure 3). This value will default from the component's Std. Cost in Inventory, but can be overridden. (This cost will not be used in Sales Order). The Sales Kit Listing has been modified to print the Unit Cost (Figure 4).

Extended Solutions

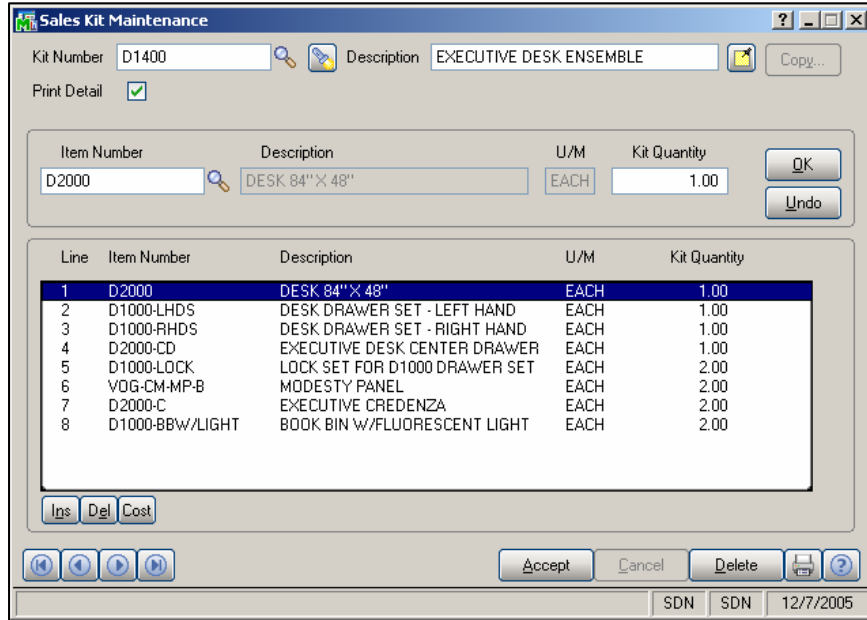


Figure 2

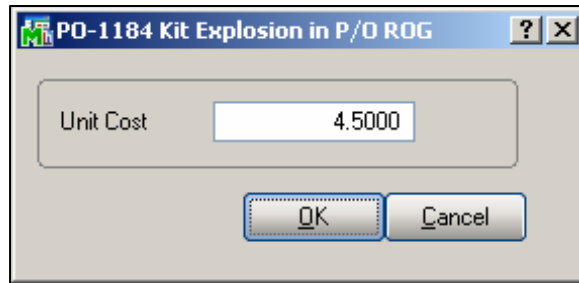


Figure 3

Extended Solutions

KIT NUMBER	DESCRIPTION	U/M	PRINT DETAIL?
D1400	EXECUTIVE DESK ENSEMBLE	EACH	Y
COMPONENT	DESCRIPTION	U/M	KIT QTY
D2000	DESK 84" X 48"	EACH	1.00
UNIT COST:	4.5000		
D1000-LHDS	DESK DRAWER SET - LEFT HAND	EACH	1.00
UNIT COST:	7.1000		
D1000-RHDS	DESK DRAWER SET - RIGHT HAND	EACH	1.00
UNIT COST:	70.0000		
D2000-CD	EXECUTIVE DESK CENTER DRAWER	EACH	1.00
UNIT COST:	6.0000		
D1000-LOCK	LOCK SET FOR D1000 DRAWER SET	EACH	2.00
UNIT COST:	15.0000		
VOG-CM-MP-B	MODESTY PANEL	EACH	2.00
UNIT COST:	27.5000		
D2000-C	EXECUTIVE CREDENZA	EACH	2.00
UNIT COST:	125.0000		
D1000-BRW/LIGHT	BOOK BIN W/FLUORESCENT LIGHT	EACH	2.00
UNIT COST:	65.0000		

Figure 4

Receipt of Goods

The first Receipt of Goods performed against the Purchase Order will explode any kit lines into its component items and will delete the Kit item. These components will show as regular Inventory items, the same as if you had keyed them into the lines individually. The explosion takes place for every kit item after the prompt 'Receive complete Purchase Order?' regardless of how you answer that question.

The warehouse will default from the Kit Item's Warehouse and the Qty Ordered will be the Qty per Kit multiplied by the number of Kits ordered. The Unit Cost will default from the new field in Sales Kit Maintenance. Like components will not be consolidated, for example if two parents are on the same P/O and have a like component and reference the same warehouse, then there will be two lines on the receipt for that same item.

This explosion will write back to Purchase Order Entry; therefore the P/O will now contain only the items which make up the kits(s) since the parent is removed from the Receipt as well as the Purchase Order. Deleting a Receipt of Good will not restore the Purchase Order Kit lines; once exploded, always exploded.

Receipt of Invoice

Receipt of Invoice will prevent you from performing a receipt of Invoice if there has not yet been a Receipt of Goods (Figure 5).



Figure 5

Extended Solutions

Report Master/Visual Integrator

The files listed below have been added or changed in the Data Dictionary by this Extended Solution for Visual Integrator purposes.

<i>New File:</i>	<i>Field:</i>
IM.SALKIT	#UNIT_COST

The Data Dictionary may contain other files and data fields that are not available without their corresponding Sage Software Extended Solutions installed.

Note: The Report Master module is not supported in MAS 200 SQL.

Crystal Reports and the ODBC Dictionary

The files listed below have been added, or changed, in the ODBC Dictionaries by this Extended Solution for Crystal Reports purposes.

<i>File:</i>	<i>Description</i>	<i>Fields:</i>
IMO	SalesKitDetail	UnitCost

Be aware that the ODBC Dictionaries may contain other files and data fields that will be unavailable without their corresponding Extended Solutions installed.

Upgrades and Compatibility

The installation CD is labeled with the version of the MAS 90 MAS 200 module for which this Extended Solution was prepared. This Extended Solution will check its compatibility with the appropriate MAS 90 MAS 200 modules and will be disabled if an incompatibility is found. If you upgrade your MAS 90 MAS 200 modules, this Extended Solution must be upgraded as well. Your MAS 90 MAS 200 dealer can supply this upgrade.

Documentation

Only changes made to the standard operation of MAS 90 MAS 200 have been documented in this manual. Operations not documented in this manual are standard procedures of MAS 90 MAS 200 processing. Standard MAS 90 MAS 200 processes, data entry screens, inquiry screens, reports, updates, etc., have not been changed unless addressed in this document.

Parts of this document may refer to the *Specific Purpose Rule*. When referenced, the described feature was developed for a specific client to its specifications and may not conform to generally accepted MAS 90 MAS 200 standards and procedures. These features may or may not benefit you in your application of MAS 90 MAS 200.

