

---

## PO Receipt Update To IM With Jobs On The Line

PO-1157

### Overview

This Extended Solution to the Purchase Order module posts to Inventory Costing and Transaction files when a job number is referenced on a line during PO Receipt of Goods Update.



Sales Order must be integrated with Job Cost. Sales Order setup option 'Post Invoice Costs to Job Cost' must be unchecked and the Job Cost Setup question 'Post to GL for Work In Process' must be unchecked in order for this Extended Solution to function.

### Installation

Before installing this Extended Solution, please verify that the version level(s) printed on the CD label are the same as the version level(s) of the MAS 90 MAS 200 module(s) you are using. For further information, please see the Upgrades and Compatibility section below. Check your Shipping Manifest for a complete list of Extended Solutions shipped.

For detailed installation instructions, please refer to the Sage website at:

[http://support.sagesoftwareonline.com/mas/extended\\_solutions/main.cfm](http://support.sagesoftwareonline.com/mas/extended_solutions/main.cfm)

### ***Installing Your Extended Solutions under Windows From a CD***

If you have the *autorun* function turned on for your PC, the installation program will start up automatically. If not, find the **autorun.exe** file on your CD-ROM drive and double-click it to start the installation program. Follow the on-screen instructions.

### **From the Sage FTP site**

When your Extended Solution is ready to be downloaded, you will receive an email from 'extendedsolutions.na@sage.com' telling you that it is ready. The email will contain the Customer Name, Cross Reference, a case-sensitive Password, a link via which you can download your Extended Solution, instructions and a Shipping Manifest. If you have any problems with this order, please email [extendedsolutions.na@sage.com](mailto:extendedsolutions.na@sage.com) and we will assist you during normal business hours.

### ***Extended Solutions Control Center***

Installing any Extended Solution will add an Extended Solutions Control Center to the MAS 90 MAS 200 Library Master Utilities menu. When you open the Control Center, the following options will be available:

- Extended Solutions Manuals
- Remove Extended Solutions
- Unlock Extended Solutions
- Merge Installation Files
- Extended Solutions Setup options

## Extended Solutions

### Setup

Once the disk is installed, you will need to access the Purchase Order options screen. After the option screens have been displayed, a Setup screen for this Extended Solution will appear. Check the 'Enable Extended Solution' box to activate this Extended Solution (Figure 1). The manual for this Extended Solution, if it has been installed, can be viewed by clicking the 'Manual' button next to the 'Enable Extended Solution' check box. It can also be viewed via the Extended Solutions Control Center (see Installation, above).

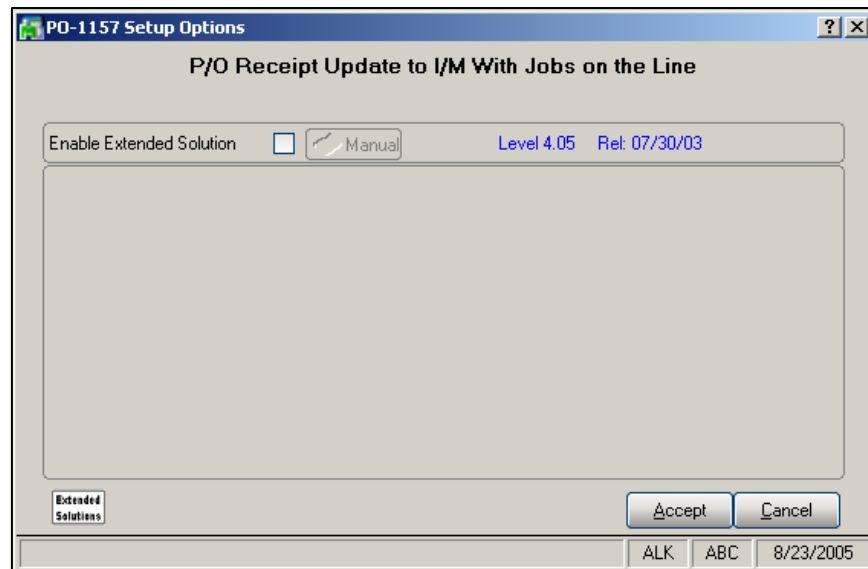


Figure 1

You should visit this Setup screen after each upgrade or reinstallation of this Extended Solution.

### Operation

During Purchase Order Entry, the account number on the line will not default to the Cost Code/Cost Type expense account (i.e., it will remain as the Inventory default account).

Receipt of Goods update of records which reference Job Numbers on the line will be to both the Job Cost Transactions Detail file and the Inventory Costing and Transaction files. The General Ledger posting will following the standard posting to Inventory; there will be no posting to the line's Cost Code/Cost Type Expense Account.

### What's New

*With the 05-08-07 release*

- Converted the requirement for Extended Solution SO-1085 to look to the standard Sales Order to Job Cost integration.

## Upgrades and Compatibility

The installation CD is labeled with the version of the MAS 90 MAS 200 module for which this Extended Solution was prepared. This Extended Solution will check its compatibility with the appropriate MAS 90 MAS 200 modules and will be disabled if an incompatibility is found. If you upgrade your MAS 90 MAS 200 modules, this Extended Solution must be upgraded as well. Your MAS 90 MAS 200 dealer can supply this upgrade.

## Documentation

Only changes made to the standard operation of MAS 90 MAS 200 have been documented in this manual. Operations not documented in this manual are standard procedures of MAS 90 MAS 200 processing. Standard MAS 90 MAS 200 processes, data entry screens, inquiry screens, reports, updates, etc., have not been changed unless addressed in this document.

Parts of this document may refer to the *Specific Purpose Rule*. When referenced, the described feature was developed for a specific client to its specifications and may not conform to generally accepted MAS 90 MAS 200 standards and procedures. These features may or may not benefit you in your application of MAS 90 MAS 200.

## Acknowledgments

© 2005 Sage Software, Inc. All rights reserved. Sage Software, MAS 90 and MAS 200 are registered trademarks or trademarks of Sage Software, Inc. All other trademarks are the property of their respective owners.

**Blytheco** LLC The Premier Provider of Effective Business Software Solutions

**Regional Offices**

<p><b>Orange County, California</b> 23161 Mill Creek Drive Laguna Hills, California 92653 Phone: (949) 583.9500 Toll Free: (800) 425.9843 Fax: (949) 583.0649 <a href="http://www.blytheco.com">www.blytheco.com</a></p>	<p><b>Atlanta, Georgia</b> 1100 Johnson Ferry Road, Ste. 450 Atlanta, Georgia 30342 Phone: (404) 841.6240 Toll Free: (800) 455.1368 Fax: (404) 841.6243 <a href="mailto:solutions@blytheco.com">solutions@blytheco.com</a></p>
--	--

**Sage Software Business Partner of the Year**

Complete Sage Software Solutions  
Sage MAS 500 • Sage MAS 200 • Sage MAS 90  
Sage BusinessWorks • Sage SalesLogix CRM • ACT! by Sage  
Sage ABRA HRMS • Sage FAS • Sage MIP Fund Accounting & Fundraising

**Offices in these cities & states:**  
Atlanta, GA • Chicago, IL • Los Angeles, CA • Orange County, CA • Tampa, FL  
Colorado • Minnesota • Missouri • New Jersey • Ohio • Oklahoma • Pennsylvania  
• South Carolina • Tennessee • Texas • Washington

National Presence - Local Touch