

---

## Enhanced Vendor P/O Price Level Maintenance

PO-1146

### Overview

This Extended Solution to the Purchase Order module adds a date field to P/O Vendor Price Level Maintenance.

### Installation

Before installing this Extended Solution, please verify that the version level(s) printed on the CD label are the same as the version level(s) of the MAS 90 MAS 200 module(s) you are using. For further information, please see the Upgrades and Compatibility section below. Check your Shipping Manifest for a complete list of Extended Solutions shipped.

For detailed installation instructions, please refer to the Sage website at:

[http://support.sagesoftware.com/mas/extended\\_solutions/main.cfm](http://support.sagesoftware.com/mas/extended_solutions/main.cfm)

### ***Installing Your Extended Solutions under Windows From a CD***

If you have the *autorun* function turned on for your PC, the installation program will start up automatically. If not, find the **autorun.exe** file on your CD-ROM drive and double-click it to start the installation program. Follow the on-screen instructions.

### **From the Sage FTP site**

When your Extended Solution is ready to be downloaded, you will receive an email from 'extendedsolutions.na@sage.com' telling you that it is ready. The email will contain the Customer Name, Cross Reference, a case-sensitive Password, a link via which you can download your Extended Solution, instructions and a Shipping Manifest. If you have any problems with this order, please email [extendedsolutions.na@sage.com](mailto:extendedsolutions.na@sage.com) and we will assist you during normal business hours.

### ***Extended Solutions Control Center***

Installing any Extended Solution will add an Extended Solutions Control Center to the MAS 90 MAS 200 Library Master Utilities menu. When you open the Control Center, the following options will be available:

- Extended Solutions Manuals
- Remove Extended Solutions
- Unlock Extended Solutions
- Merge Installation Files
- Extended Solutions Setup options

## Extended Solutions

**Custom Office**

If you customize your MAS 90 MAS 200, then you must run the Update Utility *every time* you install this Extended Solution.

**Setup**

Once the disk is installed, you will need to access the Purchase Order options screen. After the option screens have been displayed, a Setup screen for this Extended Solution will appear. Check the 'Enable Extended Solution' box to activate this Extended Solution (Figure 1). The manual for this Extended Solution, if it has been installed, can be viewed by clicking the 'Manual' button next to the 'Enable Extended Solution' check box. It can also be viewed via the Extended Solutions Control Center (see Installation, above).

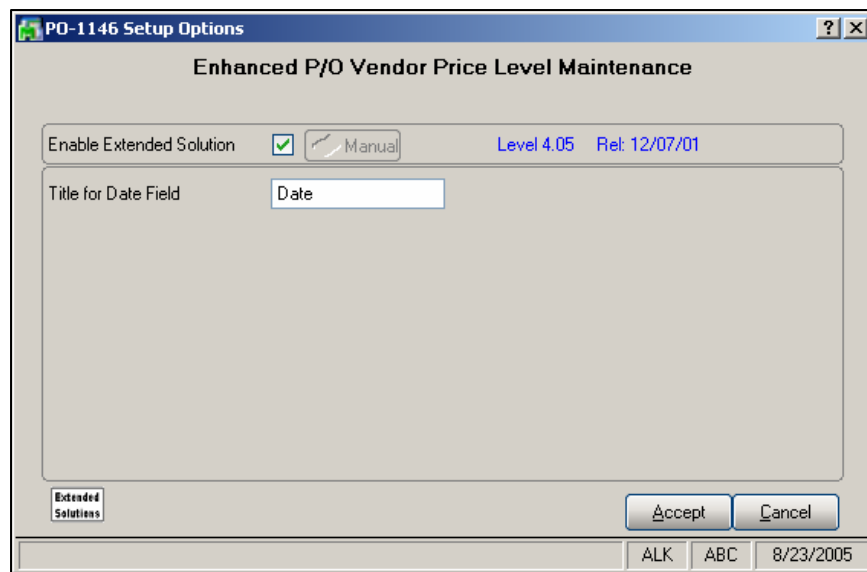


Figure 1

Answer the following prompt:

**TITLE FOR DATE FIELD:** Enter the title you wish to apply to the new Date field.

You should visit this Setup screen after each upgrade or reinstallation of this Extended Solution.

**Operation**

A Date field, titled as specified in Setup, has been added to the P/O Vendor Price Level Maintenance screen, which can be accessed by clicking the 'Date' button (Figures 2 and 3). It will be available for entry after you have defined a Vendor, and will be associated with the Pricing Record. It will be copied into a new pricing record if the 'COPY' function has been invoked.

Extended Solutions

P/O Vendor Price Level Maintenance

Vendor Number 01-AIRWAY AIRWAY PROPERTIES

Product Line [ ]

Item No. NN4 1 INCH PIPE COUPLER

Pricing Method Cost Discount Amount Unit Cost 1.800

Step	From Qty	To Qty	Discount Percent
1	1	999999	.000
2			.000
3			.000
4			.000
5			.000
6			.000
7			.000
8			.000

Buttons: [Navigation], Date, Accept, Cancel, Delete, [Print], [Help]

Choose Pricing Method SDN SDN 12/14/2001

Figure 2

Enhanced P/O Vendor Price Level Maintenance

Vendor PL Date 07/01/2001

Buttons: [OK], [Cancel]

SDN SDN 12/12/2001

Figure 3

SDN Company, Incorporated in NJ

VENDOR PRICE LEVEL LISTING

VENDOR NUMBER	VENDOR NAME	PROD LINE NUMBER	ITEM NUMBER	PRICING METHOD	FROM QTY	TO QTY	\$/% CHANGE
01-AIRWAY	AIRWAY PROPERTIES VENDOR PL DATE: 07/01/01	ELEC		\$ COST DISCOUNT	1	AND OVER	.00

Figure 4

## Extended Solutions

This Date will print on the Vendor Price Level Listing Report underneath the Vendor Name (Figure 4).

### Report Master/Visual Integrator

The files listed below have been added or changed in the Data Dictionary by this Extended Solution for Report Master/Visual Integrator purposes.

<i>New File:</i>	<i>Field:</i>
PO.VNDPL_2	All fields

The Data Dictionary may contain other files and data fields that are not available without their corresponding Sage Extended Solutions installed.

*Note: The Report Master module is not supported in MAS 200 SQL.*

### Crystal Reports and the ODBC Dictionary

The files listed below have been added or changed in the ODBC Dictionaries by this Extended Solution for Crystal Reports purposes.

<i>File:</i>	<i>Description</i>	<i>Field:</i>
PO_AR	Vendor Price Level 2	All Fields

Be aware that the ODBC Dictionaries may contain other files and data fields that will be unavailable without their corresponding Extended Solutions installed.

### Upgrades and Compatibility

The installation CD is labeled with the version of the MAS 90 MAS 200 module for which this Extended Solution was prepared. This Extended Solution will check its compatibility with the appropriate MAS 90 MAS 200 modules and will be disabled if an incompatibility is found. If you upgrade your MAS 90 MAS 200 modules, this Extended Solution must be upgraded as well. Your MAS 90 MAS 200 dealer can supply this upgrade.

### Documentation

Only changes made to the standard operation of MAS 90 MAS 200 have been documented in this manual. Operations not documented in this manual are standard procedures of MAS 90 MAS 200 processing. Standard MAS 90 MAS 200 processes, data entry screens, inquiry screens, reports, updates, etc., have not been changed unless addressed in this document.

Parts of this document may refer to the *Specific Purpose Rule*. When referenced, the described feature was developed for a specific client to its specifications and may not conform to generally accepted MAS 90 MAS 200 standards and procedures. These features may or may not benefit you in your application of MAS 90 MAS 200.

