

Item Pricing by Customer/Ship To/Warehouse

IM-1212

Overview

This Extended Solution to the standard MAS 90 MAS 200 Inventory Management module adds a new Item Pricing option: by Customer/Ship To Code/Warehouse.

Installation

Before installing this Extended Solution, please verify that the version level(s) printed on the CD label are the same as the version level(s) of the MAS 90 MAS 200 module(s) you are using. For further information, please see the Upgrades and Compatibility section below. Check your Shipping Manifest for a complete list of Extended Solutions shipped.

For detailed installation instructions, please refer to the Sage website at:
http://support.sagesoftware.com/mas/extended_solutions/main.cfm

Installing Your Extended Solutions under Windows From a CD

If you have the *autorun* function turned on for your PC, the installation program will start up automatically. If not, find the **autorun.exe** file on your CD-ROM drive and double-click it to start the installation program. Follow the on-screen instructions.

From the Sage FTP site

When your Extended Solution is ready to be downloaded, you will receive an email from 'extendedsolutions.na@sage.com' telling you that it is ready. The email will contain the Customer Name, Cross Reference, a case-sensitive Password, a link via which you can download your Extended Solution, instructions, and a Shipping Manifest. If you have any problems with this order, please email extendedsolutions.na@sage.com and we will assist you during normal business hours.

Extended Solutions Control Center

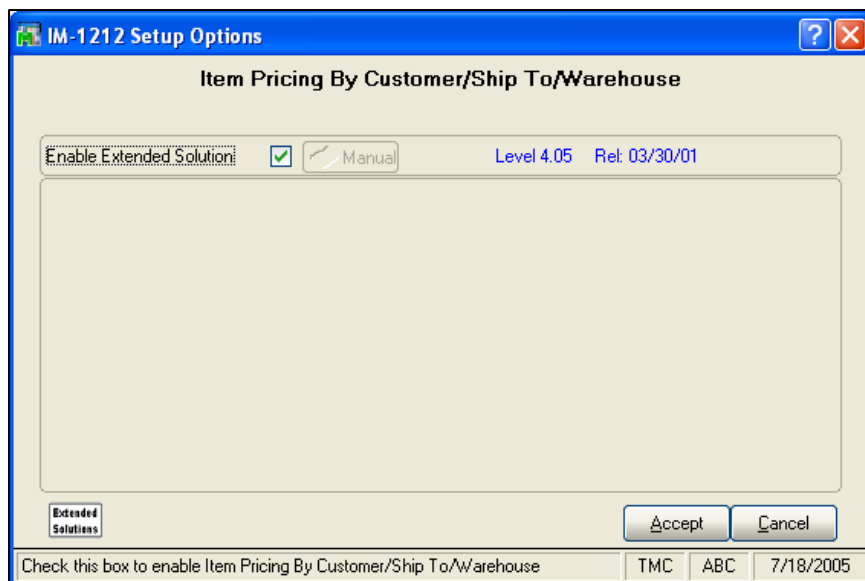
Installing any Extended Solution will add an Extended Solutions Control Center to the MAS 90 MAS 200 Library Master Utilities menu. When you open the Control Center, the following options will be available:

- Extended Solutions Manuals
- Remove Extended Solutions
- Unlock Extended Solutions
- Merge Installation Files
- Extended Solutions Setup options

Extended Solutions

Setup

Once the disk is installed, you will need to access the Inventory Management Setup menu option screen. After the standard MAS 90 MAS 200 option screens have been displayed, a Setup screen for this Extended Solution will appear. Check the 'Enable Extended Solution' box to activate this Extended Solution (Figure 1). The manual for this Extended Solution, if it has been installed, can be viewed by clicking the 'Manual' button next to the 'Enable Extended Solution' check box. It can also be viewed via the Extended Solutions Control Center (see Installation, above).

**Figure 1**

You should visit this Setup screen after each upgrade or reinstallation of this Extended Solution.

Operation

A new Item Pricing by Customer/Ship To Code/Warehouse option has been added to the Inventory Management Setup Menu. When this screen is accessed, you will be prompted for a Customer Number, Ship To Code, Item Number, and Warehouse Code (Figure 2). You must define a Customer Number and an Item Number per record, but either the Ship To Code or the Warehouse can be left blank.

Extended Solutions

Customer No. 00-0000000 Test Company

Ship To Code

Item Number STD Standard Cost Part

Warehouse Code 000 MAIN WAREHOUSE

Item Price 2.00

Customer No.	Ship To	Item Number	Warehouse Code	Item Price
00-0000000		STD	000	2.00

Enter Item Price MJF MJF 08/09/2001

Figure 2

Once these have been entered, you will be prompted for a Unit Price (in the standard Unit of Measure). The current entries for the customer will be displayed in a list box and may be selected by double-clicking on the desired entry.

There is also a 'Copy' option available. If you click the 'Copy' button, you will be able copy the current entry to a range of Ship To and Warehouse codes (Figure 3). All other fields will remain the same.

	All	Starting	Ending
Ship To Code	<input checked="" type="checkbox"/>	<input type="text"/>	<input type="text" value="ZZZ"/>
Warehouse Code	<input checked="" type="checkbox"/>	<input type="text"/>	<input type="text" value="ZZZ"/>

Copy Cancel

MJF MJF 08/09/2001

Figure 3

Extended Solutions

You will also have the ability to select the print button to print a listing of the all the Item Price entries (Figure 4). This will page break by Customer Number (Figure 5).

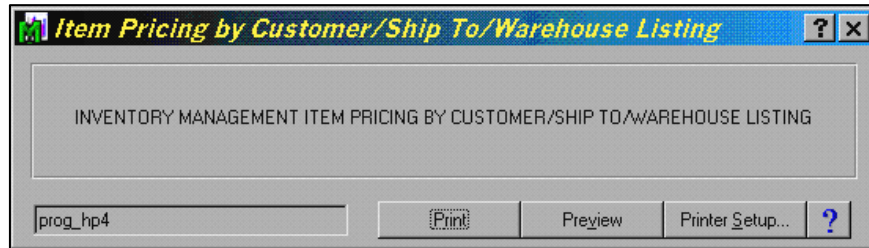


Figure 4

ABC Distribution and Service Corp.			
Item Pricing by Customer/Ship To/Warehouse Listing			
Customer No: 01-ABF		American Business Futures	
Ship To Code	Item Number	Warehouse Code	Item Price
All	1001-HON-H254	All	75.000
1	1001-HON-H252	000	35.125
1	6655	001	42.125
2	1001-HON-H254	002	32.501

Figure 5

Note: the pricing defined here will take precedence over all other pricing methodology in Sales Order and S/O Invoice entry. If there is no pricing record in this new file for the item entered on a line, then standard MAS 90 MAS 200 pricing will calculate the price.



The features of this Extended Solution are not available in Sales Order Shipping Data Entry.

Report Master/Visual Integrator

The files listed below have been added or changed in the Data Dictionary by this Extended Solution for Visual Integrator purposes.

New File: IM.IM_IC
Field: All Fields

Extended Solutions

The Data Dictionary may contain other files and data fields that are not available without their corresponding Sage Software Extended Solutions installed.

Note: The Report Master module is not supported in MAS 200 SQL.

Crystal Reports and the ODBC Dictionary

The files listed below have been added, or changed, in the ODBC Dictionaries by this Extended Solution for Crystal Reports purposes.

<i>File:</i>	<i>Description</i>	<i>Field:</i>
IM_IC	Item Pricing by Customer	All Fields

Be aware that the ODBC Dictionaries may contain other files and data fields that will be unavailable without their corresponding Extended Solutions installed.

Upgrades and Compatibility

The installation CD is labeled with the version of the MAS 90 MAS 200 module for which this Extended Solution was prepared. This Extended Solution will check its compatibility with the appropriate MAS 90 MAS 200 modules and will be disabled if an incompatibility is found. If you upgrade your MAS 90 MAS 200 modules, this Extended Solution must be upgraded as well. Your MAS 90 MAS 200 dealer can supply this upgrade.

Documentation

Only changes made to the standard operation of MAS 90 MAS 200 have been documented in this manual. Operations not documented in this manual are standard procedures of MAS 90 MAS 200 processing. Standard MAS 90 MAS 200 processes, data entry screens, inquiry screens, reports, updates, etc., have not been changed unless addressed in this document.

Parts of this document may refer to the *Specific Purpose Rule*. When referenced, the described feature was developed for a specific client to its specifications and may not conform to generally accepted MAS 90 MAS 200 standards and procedures. These features may or may not benefit you in your application of MAS 90 MAS 200.

Acknowledgments

© 2005 Sage Software, Inc. All rights reserved. Sage Software, MAS 90, and MAS 200 are registered trademarks or trademarks of Sage Software, Inc. All other trademarks are the property of their respective owners.