

Automatic Next Customer Number

AR-1066

Overview

This Extended Solution to the standard MAS 90/MAS 200 Accounts Receivable module creates an Automatic Next Customer Number option in Accounts Receivable Customer Maintenance.

Installation

Before installing this Extended Solution, please verify that the version level(s) printed on the CD label are the same as the version level(s) of the MAS 90/MAS 200 module(s) you are using. For further information, please see the Upgrades and Compatibility section below. Check your Shipping Manifest for a complete list of Extended Solutions shipped.

For detailed installation instructions, please refer to the Sage website at:
http://support.sagesoftwareonline.com/mas/extended_solutions/main.cfm

Installing Your Extended Solutions under Windows From a CD

If you have the *autorun* function turned on for your PC, the installation program will start up automatically. If not, find the **autorun.exe** file on your CD-ROM drive and double-click it to start the installation program. Follow the on-screen instructions.

From the Sage FTP site

When your Extended Solution is ready to be downloaded, you will receive an email from 'extendedsolutions.na@sage.com' telling you that it is ready. The email will contain the Customer Name, Cross Reference, a case-sensitive Password, a link via which you can download your Extended Solution, instructions, and a Shipping Manifest. If you have any problems with this order, please email extendedsolutions.na@sage.com and we will assist you during normal business hours.

Extended Solutions Control Center

Installing any Extended Solution will add an Extended Solutions Control Center to the MAS 90/MAS 200 Library Master Utilities menu. When you open the Control Center, the following options will be available:

- Extended Solutions Manuals
- Remove Extended Solutions
- Unlock Extended Solutions
- Merge Installation Files
- Extended Solutions Setup options

Sage Software, Inc. • 888-856-2378 • www.sagesoftware.com/mas90/extendedsolutions/

Extended Solutions

Custom Office

If you customize your MAS 90 MAS 200, then you must run the Update Utility *every time* you install this Extended Solution.

Setup

Once the disk is installed, you will need to access the Accounts Receivable Setup menu option screen. After the standard MAS 90 MAS 200 option screens have been displayed, a Setup screen for this Extended Solution will appear. Check the 'Enable Extended Solution' box to activate this Extended Solution (Figure 1). The manual for this Extended Solution, if it has been installed, can be viewed by clicking the 'Manual' button next to the 'Enable Extended Solution' check box. It can also be viewed via the Extended Solutions Control Center (see Installation, above).

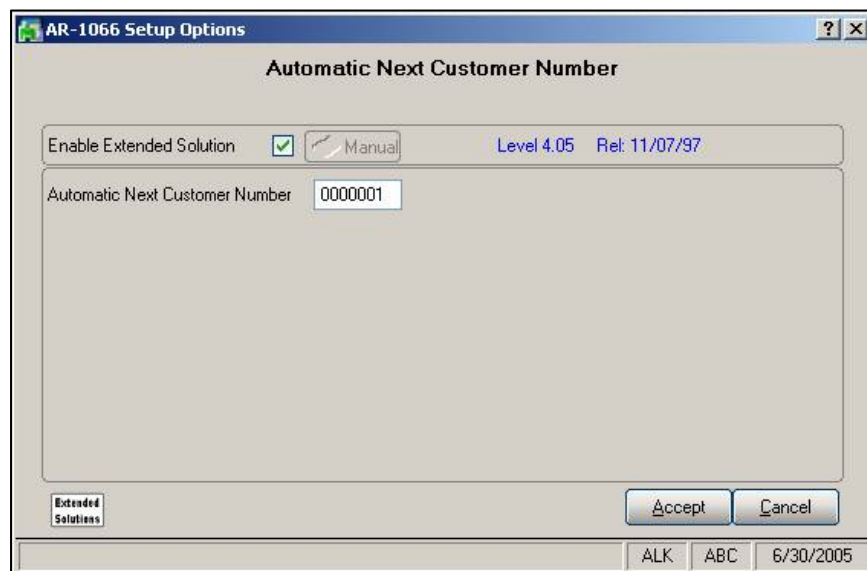


Figure 1

AUTOMATIC NEXT CUSTOMER NUMBER: Enter the value to be used. This field will auto increment.

Operation

In Customer Maintenance if divisions are used enter 'N,' or Division Number and 'N'. The program will pull the current value from the 'Automatic Next Customer Number' field in Setup and advance to the Customer Name field.

Upgrades and Compatibility

The installation CD is labeled with the version of the MAS 90 MAS 200 module for which this Extended Solution was prepared. This Extended Solution will check its compatibility with the appropriate MAS 90 MAS 200 modules and will be disabled if an incompatibility is found. If you upgrade your MAS 90 MAS 200 modules, this Extended Solution must be upgraded as well. Your MAS 90 MAS 200 dealer can supply this upgrade.

Documentation

Only changes made to the standard operation of MAS 90 MAS 200 have been documented in this manual. Operations not documented in this manual are standard procedures of MAS 90 MAS 200 processing. Standard MAS 90 MAS 200 processes, data entry screens, inquiry screens, reports, updates, etc., have not been changed unless addressed in this document.

Parts of this document may refer to the *Specific Purpose Rule*. When referenced, the described feature was developed for a specific client to its specifications and may not conform to generally accepted MAS 90 MAS 200 standards and procedures. These features may or may not benefit you in your application of MAS 90 MAS 200.

Acknowledgments

© 2005 Sage Software, Inc. All rights reserved. Sage Software, MAS 90, and MAS 200 are registered trademarks or trademarks of Sage Software, Inc. All other trademarks are the property of their respective owners.

		The Premier Provider of Effective Business Software Solutions	
Regional Offices			
Orange County, California 23161 Mill Creek Drive Laguna Hills, California 92653 Phone: (949) 583.9500 Toll Free: (800) 425.9843 Fax: (949) 583.0649 www.blytheco.com	Atlanta, Georgia 1100 Johnson Ferry Road, Ste. 450 Atlanta, Georgia 30342 Phone: (404) 841.6240 Toll Free: (800) 455.1368 Fax: (404) 841.6243 solutions@blytheco.com	Sage Software Business Partner of the Year Complete Sage Software Solutions Sage MAS 500 • Sage MAS 200 • Sage MAS 90 Sage BusinessWorks • Sage SalesLogix CRM • ACT! by Sage Sage ABRA HRMS • Sage FAS • Sage MIP Fund Accounting & Fundraising Offices in these cities & states: Atlanta, GA • Chicago, IL • Los Angeles, CA • Orange County, CA • Tampa, FL Colorado • Minnesota • Missouri • New Jersey • Ohio • Oklahoma • Pennsylvania • South Carolina • Tennessee • Texas • Washington	
National Presence - Local Touch			