

## MAS 90•MAS 200 Extended Solution Bar Code Integration with Lot/Serial UDFs

BC-1003

### Overview

This Extended Solution to the standard MAS 90•MAS 200 modifies Bar Code Import files for P/O Receipts, I/M Transaction Receipts, Transfers and Sales, and S/O Invoices to import an additional field for a specified UDF at the end of each record. During upload, if there is a value in that field that matches the parameters of the UDF, then it will be imported into the specified UDF.



Best Software Extended Solution [CM-1003](#), *Lot and Serial User Defined Fields for Distribution*, must be installed and enabled for this Extended Solution to function.

### Installation

Before installing this Extended Solution, please verify that the version level(s) printed on the CD label are the same as the version level(s) of the MAS 90•MAS 200 module(s) you are using. For further information, please see the Upgrades and Compatibility section below. Check your Shipping Manifest for a complete list of Extended Solutions shipped.

For detailed installation instructions, please refer to the Best website at:  
[http://support.bestsoftwareinc.com/mas/extended\\_solutions/main.cfm](http://support.bestsoftwareinc.com/mas/extended_solutions/main.cfm)

#### ***Installing Your Extended Solutions Under Windows From a CD***

If you have the *autorun* function turned on for your PC, the installation program will start up automatically. If not, find the **autorun.exe** file on your CD-ROM drive and double-click on it to start the installation program. Follow the on-screen instructions.

#### **From the Best FTP site**

When your Extended Solution is ready to be downloaded, you will receive an email from 'extendedsolutions@bestsoftware.com' telling you that it is ready. The email will contain the Customer Name, Cross Reference, a case-sensitive Password, a link via which you can download your Extended Solution, instructions, and a Shipping Manifest. If you have any problems with this order please email: [extendedsolutions@bestsoftware.com](mailto:extendedsolutions@bestsoftware.com) and we will assist you during normal business hours.

#### ***Installation of your Extended Solutions from a CD under UNIX***

Detailed instructions are available on the support website:  
[http://support.bestsoftwareinc.com/mas/extended\\_solutions/main.cfm](http://support.bestsoftwareinc.com/mas/extended_solutions/main.cfm)

#### ***Extended Solutions Control Center***

Installing any Extended Solution will add an Extended Solutions Control Center to the MAS 90•MAS 200 Library Master Utilities menu. When you open the Control Center, the following options will be available:

- Extended Solutions Manuals
- Remove Extended Solutions
- Unlock Extended Solutions
- Merge Installation Files
- Extended Solutions Setup options

## Setup

Once the disk is installed, you will need to access the Bar Code Master options screen. After the standard MAS 90•MAS 200 option screens have been displayed, a Setup screen for this Extended Solution will appear. Check the 'Enable Extended Solution' box to activate this Extended Solution (Figure 1). The manual for this Extended Solution, if it has been installed, can be viewed by clicking the 'Manual' button next to the 'Enable Extended Solution' check box. It can also be viewed via the Extended Solutions Control Center (see Installation, above).

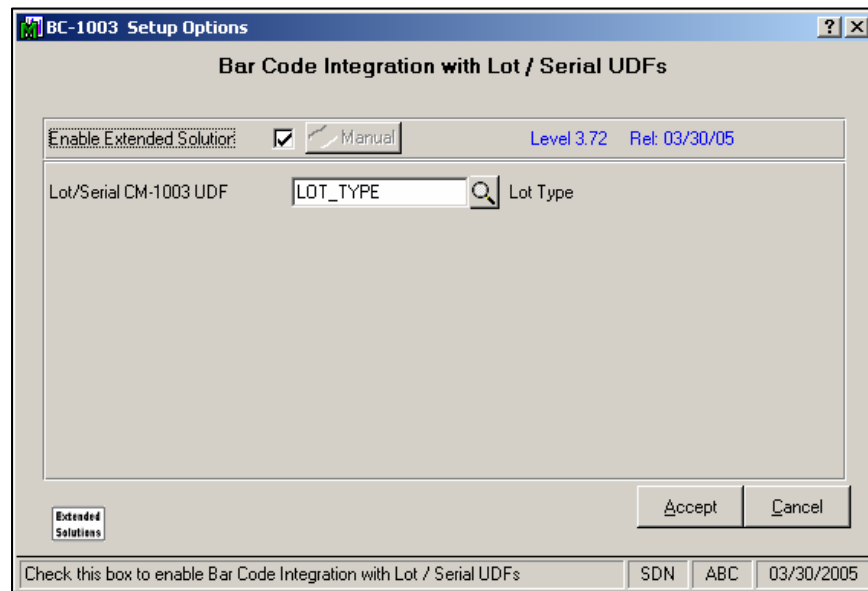


Figure 1

**LOT/SERIAL CM-1003 UDF:** Specify a Lot/Serial type CM-1003 UDF.

You should visit this Setup screen after each upgrade or reinstallation of this Extended Solution.

## Operation

This Extended Solution modifies the BarCode Import files for

- P/O Receipts
- I/M Transaction Receipts, Transfers and Sales
- S/O Invoices

with an additional field at the end of each. During upload, if there is a value in that field that matches the parameters of the UDF, then it will be imported into the specified UDF.

Records with a UDF that is too long will be rejected. A blank UDF will overwrite existing UDF data.

## What's New

With the 3/31/05 release:

- Enhancement changed to use one CM-1003 UDF instead of one IM-1191 UDF.

## Upgrades and Compatibility

The installation CD is labeled with the version of the MAS 90•MAS 200 module for which this Extended Solution was prepared. This Extended Solution will check its compatibility with the appropriate MAS 90•MAS 200 modules and will be disabled if an incompatibility is found. If you upgrade your MAS 90•MAS 200 models, this Extended Solution must be upgraded as well. Your MAS 90•MAS 200 dealer can supply this upgrade.

## Documentation

Only changes made by Best Software, Inc. to the standard operation of Best Software, Inc., MAS 90•MAS 200 have been documented in this manual. Operations not documented in this manual are standard procedures of MAS 90•MAS 200 processing. Standard MAS 90•MAS 200 processes, data entry screens, inquiry screens, reports, updates, etc., have not been changed unless addressed in this document.

Parts of this document may refer to the *Specific Purpose Rule*. When referenced, the described feature was developed for a specific client to its specifications and may not conform to generally accepted MAS 90•MAS 200 standards and procedures. These features may or may not benefit you in your application of MAS 90•MAS 200.

## Acknowledgments

Best Software, MAS 90•MAS 200, MAS 90•MAS 900 For Windows, and 90W are the registered trademarks of Best Software, Inc.

©2004 Best software, Inc. All Rights reserved. Reproduction in whole or in part without permission is prohibited. The capabilities, system requirements and/or compatibility with third-party products described herein are subject to change without notice. Contact Best Software for current information.