

## Enhanced Commission Edit Register Update

AR-1168

### Overview

This Extended Solution changes the update of the Commission Edit Register to create one Accounts Payable invoice per Accounts Receivable invoice processed. The A/P Invoice Comment will be set to one of the following:

- A/R Invoice Number and Invoice Date
- Sales Subject To Commission and Commission Rate
- Job Number and A/R Invoice Number



In order for this Extended Solution to work, the A/R Setup option, 'Salesperson Commission Updates to Other Modules' must be set to 'Yes' and the Salesperson must be linked to a Vendor in Salesperson Maintenance.

### Installation

Before installing this Extended Solution, please verify that the version level(s) printed on the CD label are the same as the version level(s) of the MAS 90 MAS 200 module(s) you are using. For further information, please see the Upgrades and Compatibility section below. Check your Shipping Manifest for a complete list of Extended Solutions shipped.

For detailed installation instructions, please refer to the Sage website at:  
[http://support.sagesoftwareonline.com/mas/extended\\_solutions/main.cfm](http://support.sagesoftwareonline.com/mas/extended_solutions/main.cfm)

### Installing Your Extended Solutions under Windows From a CD

If you have the *autorun* function turned on for your PC, the installation program will start up automatically. If not, find the **autorun.exe** file on your CD-ROM drive and double-click it to start the installation program. Follow the on-screen instructions.

### From the Sage FTP site

When your Extended Solution is ready to be downloaded, you will receive an email from 'extendedsolutions.na@sage.com' telling you that it is ready. The email will contain the Customer Name, Cross Reference, a case-sensitive Password, a link via which you can download your Extended Solution, instructions and a Shipping Manifest. If you have any problems with this order, please email [extendedsolutions.na@sage.com](mailto:extendedsolutions.na@sage.com) and we will assist you during normal business hours.

		<p>The Premier Provider of Effective Business Software Solutions</p>	
<p><b>Regional Offices</b></p>		<p><b>Sage Software Business Partner of the Year</b></p>	
<p>Orange County, California                  23161 Mill Creek Drive                  Laguna Hills, California 92653                  Phone: (949) 583.9500                  Toll Free: (800) 425.9843                  Fax: (949) 583.0649  <a href="http://www.blytheco.com">www.blytheco.com</a></p>	<p>Atlanta, Georgia                  1100 Johnson Ferry Road, Ste. 450                  Atlanta, Georgia 30342                  Phone: (404) 841.6240                  Toll Free: (800) 455.1368                  Fax: (404) 841.6243  <a href="mailto:solutions@blytheco.com">solutions@blytheco.com</a></p>	<p><b>Complete Sage Software Solutions</b>                  Sage MAS 500 • Sage MAS 200 • Sage MAS 90                  Sage BusinessWorks • Sage SalesLogix CRM • ACT! by Sage                  Sage ABRA HRMS • Sage FAS • Sage MIP Fund Accounting &amp; Fundraising</p>	
<p><b>Offices in these cities &amp; states:</b>                  Atlanta, GA • Chicago, IL • Los Angeles, CA • Orange County, CA • Tampa, FL                  Colorado • Minnesota • Missouri • New Jersey • Ohio • Oklahoma • Pennsylvania                  • South Carolina • Tennessee • Texas • Washington</p>			
<p>National Presence - Local Touch</p>			

**Extended Solutions Control Center**

Installing any Extended Solution will add an Extended Solutions Control Center to the MAS 90 MAS 200 Library Master Utilities menu. When you open the Control Center, the following options will be available:

- Extended Solutions Manuals
- Remove Extended Solutions
- Unlock Extended Solutions
- Merge Installation Files
- Extended Solutions Setup options

**Setup**

Upon completion of software installation, you will need to access Extended Solutions Setup from the Accounts Receivable Setup menu. Select this part number and the Setup screen for this Extended Solution will appear (Figure 1). Check the 'Enable Extended Solution' box to activate this Extended Solution. The manual for this Extended Solution can be viewed by clicking the 'Manual' button next to the 'Enable Extended Solution' check box. It can also be viewed via the Extended Solutions Control Center (see Installation, above).

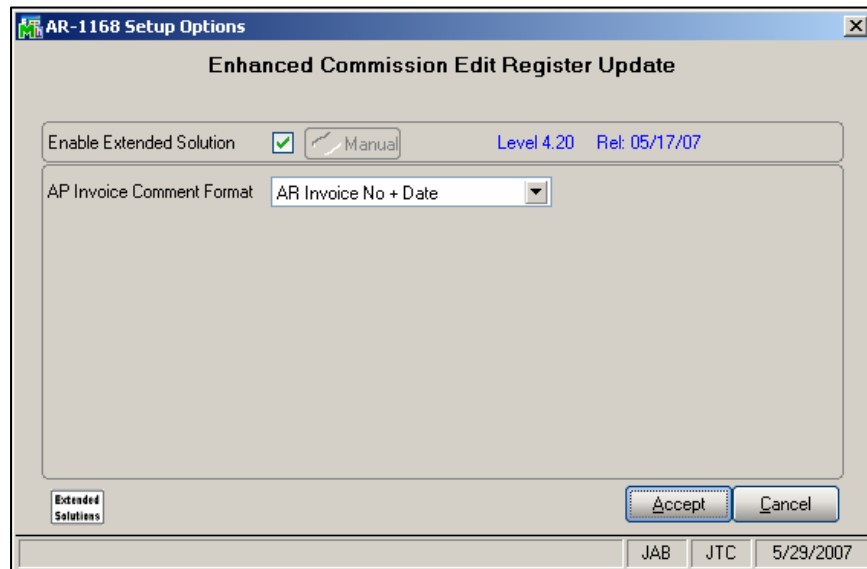


Figure 1

Answer the following prompt:

**AP INVOICE COMMENT FORMAT:** Select one of the following:  
AR Invoice Number + Date  
Commission Sales + Rate  
Job Number + Invoice Number

## Operation

A/R Commission Edit Register update has been modified to create one A/P invoice per A/R invoice. The A/P Invoice header comment field will be set to the value selected in Setup.

AR Invoice Number + Date will reflect the A/R Invoice Number and A/R Invoice Date

Commission Sales + Rate will reflect the Sales Subject To Commission and the Commission Rate from Commission Edit.

Job Number + Invoice Number will reflect the Job Number on Invoices

- which originated from Job Cost
- which originated in Accounts Receivable and A/R is integrated with Job Cost
- which originated in Sales Order and S/O is integrated with Job Cost

In the last two instances, if no Job Number is found, then the comment will be: blank + A/R Invoice Number.

## What's New

*With the 05-31-07 release:*

- Removed *SO-1085: Sales Order Integration with Job Cost* and recoded to look to the standard Sales Order to Job Cost feature set.

## Upgrades and Compatibility

The installation CD is labeled with the version of the MAS 90 MAS 200 module for which this Extended Solution was prepared. This Extended Solution will check its compatibility with the appropriate MAS 90 MAS 200 modules and will be disabled if an incompatibility is found. If you upgrade your MAS 90 MAS 200 modules, this Extended Solution must be upgraded as well. Your MAS 90 MAS 200 dealer can supply this upgrade.

## Documentation

Only changes made to the standard operation of MAS 90 MAS 200 have been documented in this manual. Operations not documented in this manual are standard procedures of MAS 90 MAS 200 processing. Standard MAS 90 MAS 200 processes, data entry screens, inquiry screens, reports, updates, etc., have not been changed unless addressed in this document.

Parts of this document may refer to the *Specific Purpose Rule*. When referenced, the described feature was developed for a specific client to its specifications and may not conform to generally accepted MAS 90 MAS 200 standards and procedures. These features may or may not benefit you in your application of MAS 90 MAS 200.

## Acknowledgments

© 2005 Sage Software, Inc. All rights reserved. Sage Software, MAS 90 and MAS 200 are registered trademarks or trademarks of Sage Software, Inc. All other trademarks are the property of their respective owners.