

# Sage 500 ERP



## Remote Access and Global Connectivity Worldwide Connectivity and eBusiness Suite

Sage 500 ERP (formerly Sage ERP MAS 500) is designed to connect your entire enterprise by leveraging the appropriate technology for the requirements of your business. Sage 500 ERP provides two groups of applications—one for full-time, trained operators who need power and flexibility, the other for occasional operators who require ease of use rather than total flexibility.

To provide remote access to the full-time trained operators who need flexible and powerful Windows®-based desktop applications, customers can use Citrix or Terminal Services. These robust applications are designed for quick data entry and complete flexibility.

The eBusiness Suite is designed for maximum ease of use and is streamlined for quick retrieval of vital information without the overhead of some of the less frequently accessed features. Specifically, the B2B interface promotes customer self-service, while the remote access interface provides customer service and sales personnel with access to relevant customer and product information. The Business Insights Dashboard provides a portal for monitoring key performance indicators, and Sage TimeSheet facilitates remote time and expense entry. Because these web-based applications are easy to configure and can be viewed anytime, anywhere, they are the ideal tools for streamlining communication between all relevant constituents.

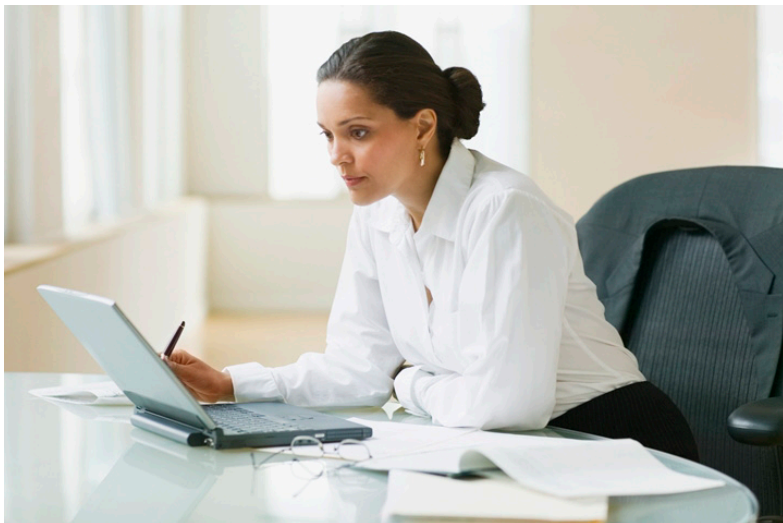
Current Sage 500 ERP customers leverage the built-in terminal server capabilities within Microsoft Windows 2003 or Windows 2008 Server to run multiple locations from a single server. In fact, one customer has a server in California providing remote access to sites in Germany, Japan, the Netherlands, Canada, and multiple locations in the United States. Another customer has a server in Massachusetts that is accessed by its U.K. and Hong Kong facilities through a wide area network (WAN). Other customers have chosen to deploy Sage 500 ERP through a hosted provider model.

### APPLICATIONS

- Terminal Services
- Citrix Metaframe
- Business Insights Dashboard
- Sage TimeSheet
- eBusiness Suite

### SAGE 500 ERP SOLUTIONS

- Financials and Project Accounting
- Manufacturing and Distribution
- CRM and E-Business
- Human Resources and Payroll
- Customization and Integration
- Business Intelligence



"I've been surprised at how flexible and easy to configure Sage 500 ERP is. It's reachable from any site with a browser, so we don't need to install a client. Being web-enabled, it gives us a single instance for partners worldwide, so everyone is working with the same data."

Guy DeMeester  
Director of Global IS  
Roxio, Inc.  
(A division of Sonic Solutions)

## Remote/Global Access

Access the award-winning Sage 500 ERP applications from anywhere in the world.

- Operate Sage 500 ERP remotely from any computer that has Internet access to the application server using the built-in terminal services included in Windows 2003 or Windows 2008 Server.
- Run multiple locations and even multiple companies using terminal services or other popular programs such as Citrix Metaframe.
- Remote users, such as field sales, satellite offices, and busy executives, can monitor the pulse of their business when traveling.
- Reduce IT overhead with terminal services by eliminating the need to update multiple clients. Instead, your IT staff can rollout upgrades and companywide customizations by simply installing them on the terminal server.

## Hosted Environments

Save valuable IT resources through hosted environments.

- Many Sage 500 ERP customers use hosted environments to deploy their application software.
- Save money by reducing IT costs, such as hardware infrastructure, database, operating system upgrades and maintenance, system backups, and more.

## Sage TimeSheet

Manage global projects through in-house and remote access to time, expense, and project status information.

- Enter time and expenses remotely or locally anytime, anywhere.
- Track billable and nonbillable time.
- Email copies of timesheets and expense claims to project managers or team leaders quickly and easily.
- View real-time project status at a high level or drill-down to individual transactions entered for the project.
- Easily handle global expenses and foreign currencies.

## Business Insights Dashboard

Consolidate critical personal, corporate, and external information with single-click access to analytical and collaborative tools.

- Web browser and .NET technology delivers up-to-date company metrics, ad-hoc inquiry, analysis, and competitive intelligence at an executive's fingertips.
- Available anytime, anywhere, on any device that can render an HTML page.
- Customizable to include just the data in just the format desired to drive critical business decisions.

## eBusiness Suite

Operate 24/7 and enable customers to securely access their accounts, update their profiles, place orders, and get support any time of the day or night. The eBusiness Suite for Sage 500 ERP enables powerful, intuitive browser-based B2B and B2C e-commerce solutions.

Additionally, provide up-to-the-minute information to customers, salespeople, and customer service representatives around the clock. Remote access capabilities allow salespeople and customer service representatives the ability to inquiry on customers' account status, order status, returns, and credit status. They can also access current inventory quantities by warehouse and location, generate three-step transfer orders, and even process purchase order receipts online.

Using the Web Services tools, build and integrate additional remote access portals as required to run a business more efficiently, leveraging users from any location.

- Create fast, customized B2B and B2C e-commerce solutions.
- Utilize standard Sage 500 ERP pricing rules.
- Provide remote access to sales and customer service representatives.
- Integrate additional applications with Sage 500 ERP.

## Alerts

Configure the powerful alerting system and email options to keep you updated on important changes or events that occur in your business.

- Customize dozens of predefined alerts quickly based on dates and time-sensitive events.
- Stay informed of credit holds, inventory thresholds, sales ratios, urgency levels, over budget projects, machine break downs, and priority clients.
- Send alerts to email accounts, handheld devices, Twitter, Facebook, or customer RSS feeds.

## Business Insights Explorer and Analyzer

Optimize daily decision-making tasks in the most critical areas of your business. Important data is presented in a streamlined grid interface spanning multiple data elements in one view.

- Easily drill down and drill around to related records.
- Customize views with filters, drag-and-drop columns, and sort options.
- Quickly access related tasks directly from the view.
- Leverage PivotTables and graphs for in depth analysis.
- Export result sets for additional data mining, analysis or as fast and easy reports on the fly.