

With TrueCommerce Transaction Manager™ EDI is as simple as e-mail!

TrueCommerce Transaction Manager is our user-friendly translation software. Transaction Manager is a software application that is simple and intuitive to use, requiring only basic PC skills to implement. It offers robust functionality and unparalleled scalability.

Transaction Manager's features include:

- Supports any X12 transaction
- Automatically highlights missing, mandatory information
- Automatically sends acknowledgments when transactions are received
- Includes item ID translation table and default information lookup table
- Multiple store lists
- Automatic conversions of charges and allowances
- Support for multiple GL Account setups
- Advance Ship Notice (ASN) module included
(Use in conjunction with ELP and print barcode labels and auto-generate UCC-128 numbers. Each sold separately.)

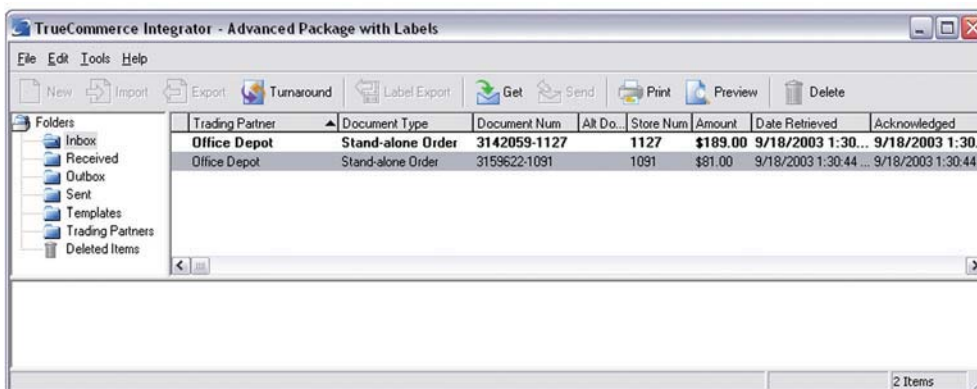
Transaction Manager enables the user to send and receive EDI transactions with a trading partner via TC.Net™. Transactions are processed through a user-friendly interface, similar to email. After launching Transaction Manager, a user is able to download EDI transactions from TC.Net by clicking the "get transactions" button. Transaction Manager translates data from the incoming EDI format that it receives into a traditional purchase order format. The purchase order may be viewed on the screen,

printed to paper, and/or exported to the user's accounting system.

Transaction Manager is able to export incoming transactions to a format that a user's accounting or business system can understand via the included Business System Plug-in™ (BSP). It is also able to import outgoing transactions from the accounting or business system. This integration capability reduces the need for re-keying data, resulting in a more

streamlined business process and fewer mistakes. Transaction Manager uses a specific Electronic Partner Plug-in™ (EPP), or mapping module for each trading partner. The data received from, and sent to the trading partner is formatted by the EPP to conform to the trading partner's specifications. All updates to new versions of TrueCommerce Transaction Manager provided at no charge.

The intuitive user interface features point-and-click functionality similar to e-mail.



System Requirements:

Operating System – Windows® 2000, XP or Vista
Processor - Minimum 1 GHz (recommended 2 GHz)
RAM – Minimum 512 MB (recommended 1 GB)
Minimum free hard disk space - 250MB
IIS for Client/Server installation
Microsoft SQL server Express Edition (provided by TrueCommerce) or Microsoft SQL Server 2005

Blytheco - The Premier Sage Software Business Solutions Provider ◦ National Presence, Local Touch ◦ 1.800.425.9843 ◦ www.blytheco.com

