

MasPrint Designer For UltraPrint Users Guide MAS90/MAS200 v.4



... the power of intelligent scanning™

www.scanco.com



The Premier Sage Software Business Partner

Corporate Offices

Orange County, California
23161 Mill Creek Drive
Laguna Hills, California 92653
Phone: (949) 583.9500
Toll Free: (800) 425.9843
Fax: (949) 583.0649

www.blytheco.com

Atlanta, Georgia
1100 Johnson Ferry Road, Ste. 450
Atlanta, Georgia 30342
Phone: (404) 841.6240
Toll Free: (800) 455.1368
Fax: (404) 841.6243

solutions@blytheco.com

Sage Software Business Partner of the Year

Complete Sage Software Solutions

Sage MAS 500 ◊ Sage MAS 200 ◊ Sage MAS 90
Sage BusinessWorks ◊ Sage SalesLogix CRM ◊ ACT! by Sage
Sage ABRA HRMS ◊ Sage FAS ◊ Sage MIP Fund Accounting & Fundraising

Offices in these cities & states:

Atlanta, GA ◊ Chicago, IL ◊ Los Angeles, CA ◊ Orange County, CA ◊ Tampa, FL
Colorado ◊ Missouri ◊ New Jersey ◊ Ohio ◊ Oklahoma ◊ Pennsylvania ◊ Tennessee
Texas ◊ Washington

National Presence - Local Touch

WHAT IS MASPRINT DESIGNER?

Scanco's MasPrint Designer software package allows you to utilize the power of *Label Matrix*, Teklynx label design program along with Scanco's *UltraPrint* printing solution. MasPrint Designer gives you the ability to create your own custom labels, which can be easily integrated with MAS90/MAS200.

The MasPrint Designer consists of the following programs:

- *Label Matrix* 7.01 by Teklynx - label designing software
-
- Scanco *UltraPrint* program – Bar Code label printing software
-
- Scanco *Thermit!* - Shipping and Compliance label printing software

Enclosed in your package:

- *UltraPrint* and *Thermit!* Installation CD
-
- *Label Matrix* 7.01 CD
-
- Manuals and Guides

BEFORE YOU INSTALL YOUR MASPRINT DESIGNER SOFTWARE

Complete the following steps to print labels using the MasPrint software.

1. Install the **Teklynx** *Label Matrix* software and go through the *Label Matrix* Quick Start Guide.
2. Use this manual to create your label(s) in *Label Matrix* and convert your label(s) to the correct design format.
3. Install the *UltraPrint* Software using the included *UltraPrint* Installation and Setup Guide and test your new label.

Before you design your label	4-5
Section 1: Designing your label with <i>Label Matrix</i>	6-11
Section 2: Converting your design file to <i>UltraPrint</i> label format file	12-14
Appendix A: MasPrint Substitutions Table	15-17

Contact Scanco with any questions:

Software Support	330-645-9959 x128
Fax	330-645-9969
Web	www.scanco.com
E-mail	support@scanco.com

October, 2004

BEFORE YOU BEGIN DESIGNING YOUR LABEL

After installation of the *Label Matrix* software, refer to the *Label Matrix* Quick Start Guide, which you received in the *Label Matrix* box. Use the tutorial to familiarize yourself with the process of designing your label.


REMEMBER, when designing your new label in *Label Matrix* :


- You will define the Print Driver in the label design, the actual printer will be set up with the Generic Printer driver, so it is important to use the correct **Printer Driver** within *Label Matrix*.

The printer driver name should contain the (L) or the (X), and **not** the (W) next to the printer resolution information.



- The printer resident fonts are used for the human readable fields.

 The printer resident fonts are those fonts that have a spooling paper icon next to the font name.

 If you select the True Type font, you won't receive the desired output during the label conversion process and printing out the label.

- We recommend using the 128B barcode type. It is the most compatible, and uses most readable characters.
- Use the Auto (Printer Default) font when designing barcodes

- When inserting both the human readable and the barcode fields into the new label design, always select a CONSTANT as your **Data Origin** field, which is located under the Data tab
- ☀ When finished designing your label, be sure there are no warning lights next to images, barcodes or human readable fields. If you have a yellow or red warning light, hold the cursor over the warning light to find the error.
- If you have images on your label we recommend converting the image to the format that is supported by your printer model to make the label printing a more efficient and less time consuming. If your printer doesn't support color images, you can convert it to Black and White format using Microsoft Paint program.
- To make the label design conversion process more efficient and less troublesome, type the actual *UltraPrint* substitution in the **Text** field for a specific CONSTANT. (use a substitution in the label design for the field where the barcode will print out information pulled from MAS90/MAS200)
- To make sure that there will be enough space for your actual data when printing your label, add extra digits after the substitution to equal the maximum length of that data field.

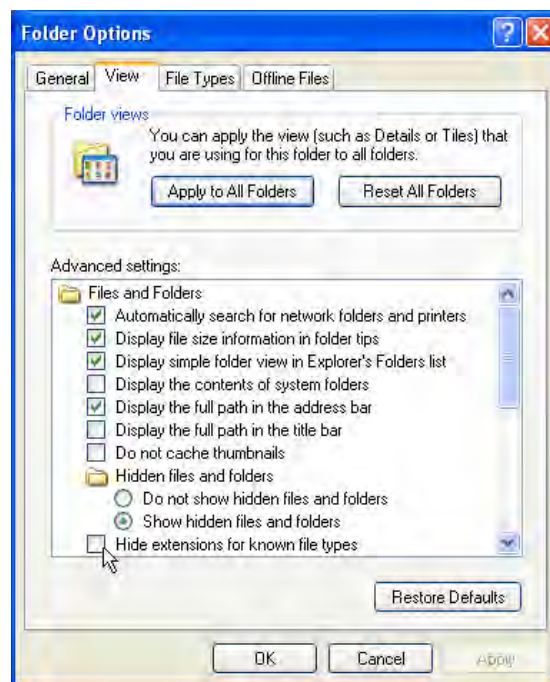
Find the correct substitutions and the maximum field lengths in the **Table of MasPrint Label Substitutions** in Appendix A of this manual. If you don't see a substitution you need, contact Scanco Support. We do build custom substitution fields upon request for an additional fee.

- Give your file a name that is 6 characters long, and one you will recognize i.e.: invlbl or itmlbl.
- Use the **\$NO_LBL\$** substitution on every label, this data informs UltraPrint how many labels to print out. If this substitution isn't present, you will always print just one label. Depending on the label printer model, the \$NO_LBL\$ code will be placed in a different location. Usually, it will replace 1 in the PQ1 line. Contact Scanco Support if you are not sure where this line is.

SECTION 1: DESIGNING YOUR LABEL WITH LABEL MATRIX

After running through the tutorial for *Label Matrix*, you are ready to design your first *UltraPrint* Label. We suggest drawing out your design before you start designing your own label, but for practice, follow along this section to design a basic inventory label that will include item number and serial number information.

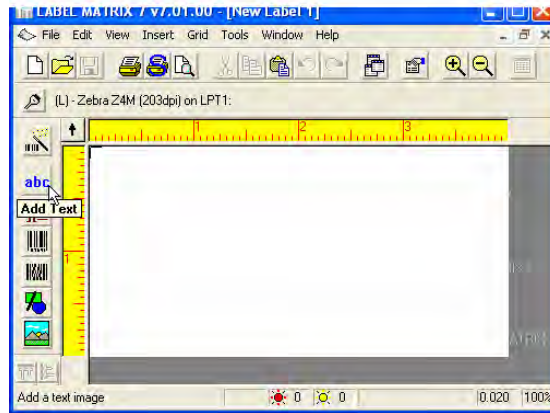
In Windows, make sure to have file extensions displayed. To do this, open **My Computer**, select the TOOLS menu, Scroll down to FOLDER OPTIONS, click on the VIEW tab and *uncheck* the option to hide the extensions for known file types.



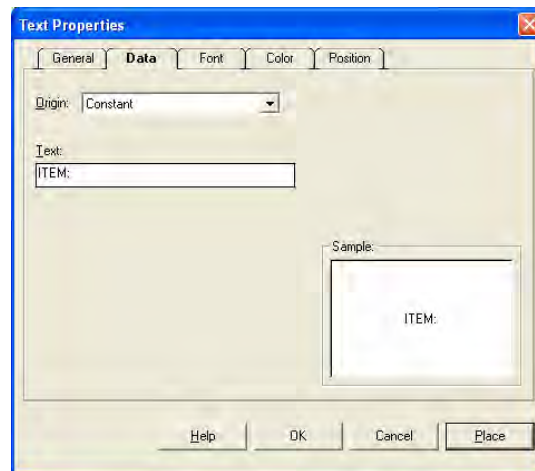
You will want to create a folder on your desktop to keep your files, on a temporary basis. Name the folder something recognizable like **Inventory Label**. This can be moved at a later date.

Open *Label Matrix*, make sure the correct printer and driver are selected before you start. Go to the FILE menu and choose **Label Properties** to set the label size, make sure it matches your actual label as it comes out of the printer.

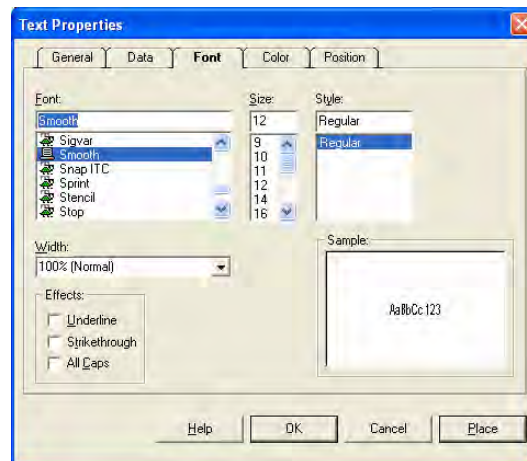
After setting up the label's properties, you are ready to design a practice label. Click on **Add Text** to add a human readable field on the label.



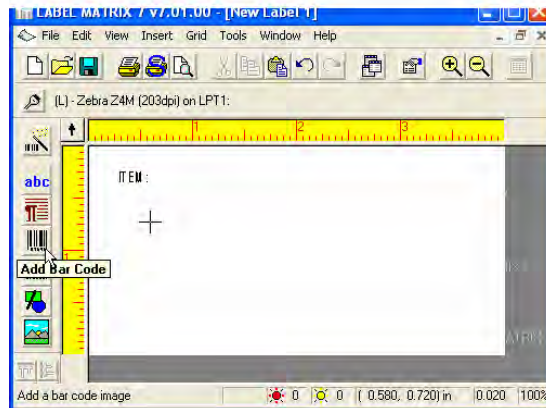
Type **ITEM:** in the **Text** field, make sure the **Origin** is CONSTANT.



Check to make sure the font is appropriate for your printer.



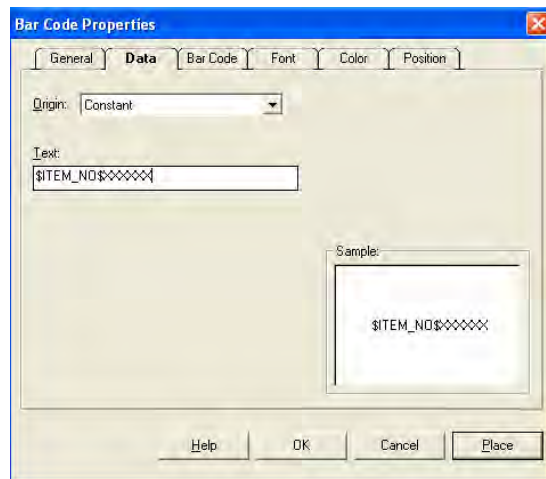
Click on **Place**, and position at the top left of your label.



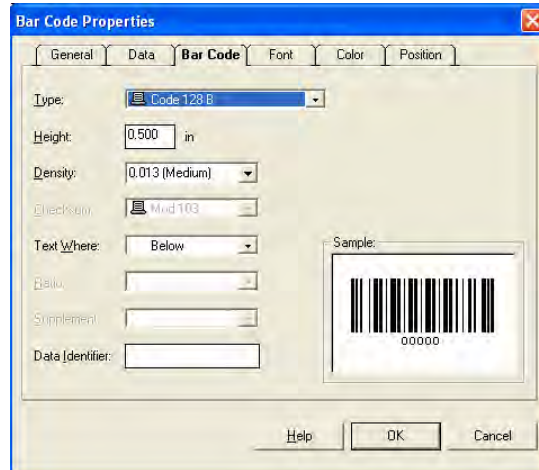
Now, add a barcode for the item number, click on **Add Bar Code**.

Type in the substitution for Item Number - **\$ITEM_NO\$** - make sure to use capitals when placing any substitution.

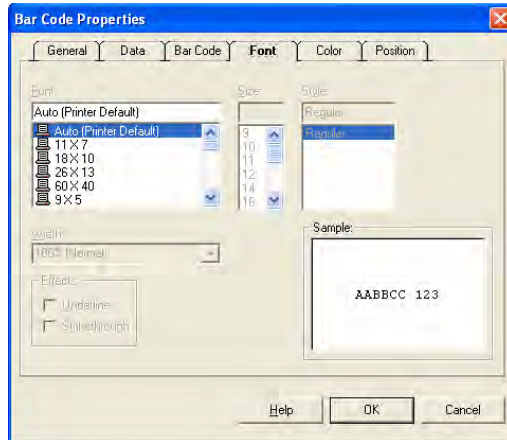
Add characters at the end of the substitution to equal the length of the data field, in this instance 15 spaces.



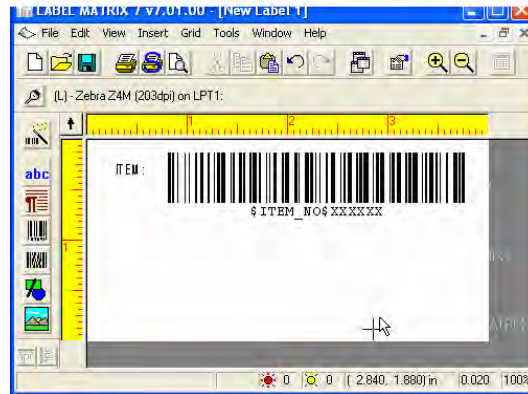
Check the barcode **Type** and the **Density** (density is the width of your barcode, anything over VERY HIGH is difficult for scanners to read). Choose **below** for the **Type Where** field to have a human readable item number below the barcode.



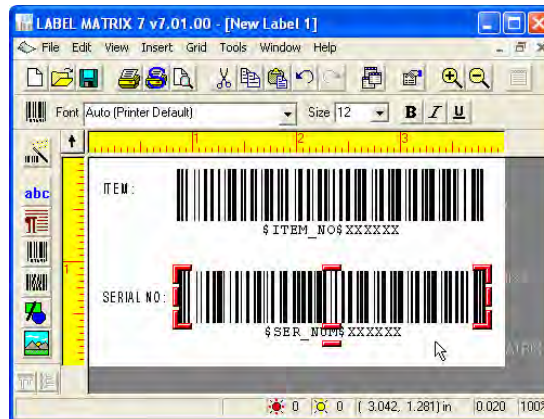
Make certain the **Auto Printer (Default)** font is chosen for the Barcode.



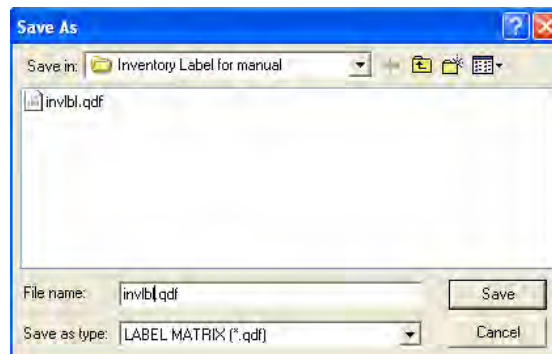
In the **Data** Tab, click on **Place**, and place the barcode just to the right of the human readable ITEM:



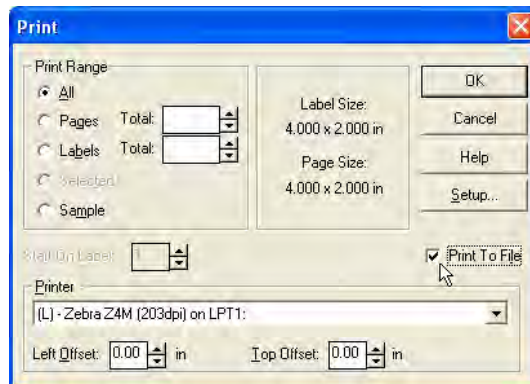
Click on **ADD TEXT** to repeat this process and insert a Serial Number into the label design. Use **\$SER_NUM\$** as the substitution, add enough characters at the end to equal 15 spaces.



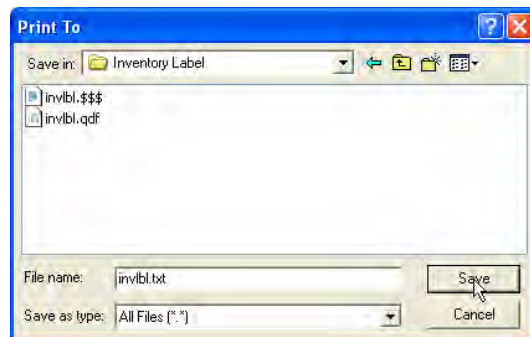
Go to the FILE menu and scroll to **Save As**. Browse to the folder you made on your desktop, and save this .qdf file as **invlbl.qdf**.



Next, go to the FILE menu and scroll to **Print**. Click the **Print to File** box and click **OK**.



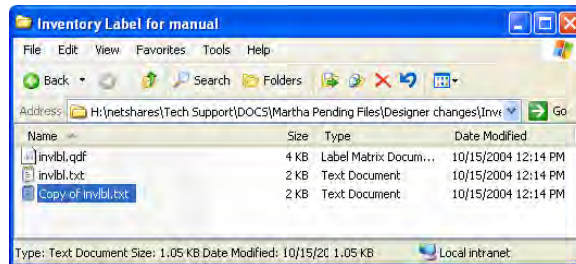
Choose that same folder and save this text file as *invlbl.txt*. Close out of *Label Matrix*.



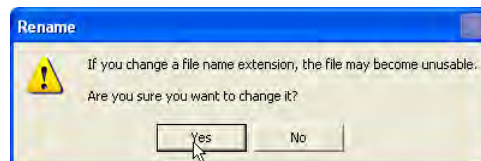
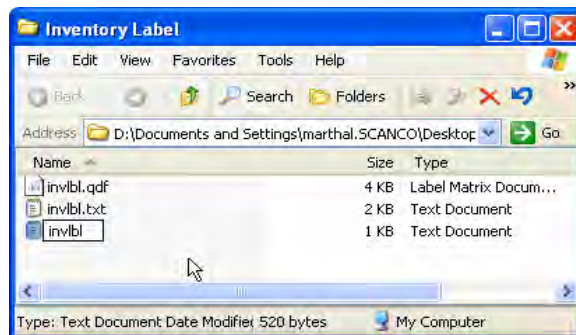
Once the design of your new Bar Code label is complete you are ready to proceed to converting the file into the correct file format.

SECTION 2: CONVERTING YOUR DESIGN FILE

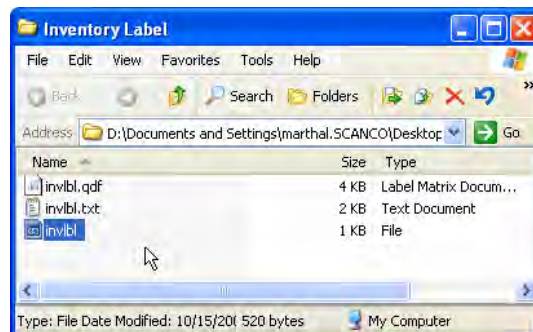
Open the folder on your desktop, right click on the .txt file you just saved and select COPY. Right click on the white space and select Paste.



Rename the file "Copy of invlbl.txt" to **invlbl**, make sure to remove the .txt extension



Double click to open the **invlbl** file, select Notepad to open and edit this file.



Your label file should look similar to this.



```
inlbl.txt - Notepad
File Edit Format View Help
*****
* WARNING: It is unlawful to sell or give away this
* output to installations which do not have
* a registered copy of this product. This
* output is to be used only by the registered
* end user, for use on one printer. See the
* license agreement for more information.
*****
*
* Delete this line and above to use for printing.
*
AXA
ACW1,R:DOWNLD1.FNT
ACW2,R:DOWNLD2.FNT
ACW3,R:DOWNLD3.FNT
ACW4,R:DOWNLD4.FNT
ACOY,0^MMT^MD+0
AXZ
AXAACI0,167,167^XZ
AXA
APR3^FS
AMNY^FS
AFT28,71^A0N,34,26^FDITEM:^FS
ABY3,2,5^FS
AFT171,122^BCN,102,N,N,Y^FD>:$ITEM_NO$XXXXXX^FS
AFT335,148^ABN,22,14^FH^FD$ITEM_5^FNO$XXXXXX^FS
AFT28,282^A0N,34,26^FD$SERIAL NO:^FS
ABY3,2,5^FS
AFT175,321^BCN,102,N,N,Y^FD>:$SER_NUM$XXXXXX^FS
AFT339,347^ABN,22,14^FH^FD$SER_5^FNUM$XXXXXX^FS
AISSTRNWARE,N^FS
AXZ
AXA
APR3^FS
AILSTRNWARE^FS
APF0^FS
APQ,0,0,Y
AXZ
AXA
AIDSTRNWARE
AXZ
```

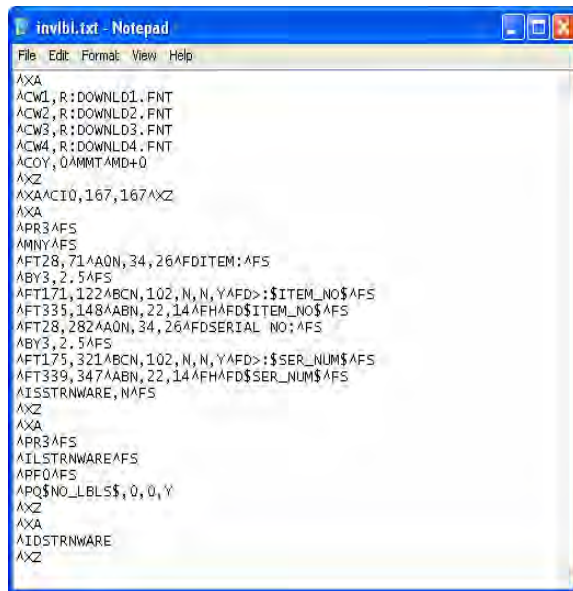
To convert this file to conform to the correct *UltraPrint* file format, a few changes need to be made.

1. Delete any lines that may be indicated on the file.
2. Delete the characters you added after the substitutions. (XXX)
3. Delete any extra characters that may have been added to any of the substitutions. (5f)
4. Add the **NUMBER OF LABELS** substitution. **\$NO_LBL\$**



```
inlbl.txt - Notepad
File Edit Format View Help
AXA
ACW1,R:DOWNLD1.FNT
ACW2,R:DOWNLD2.FNT
ACW3,R:DOWNLD3.FNT
ACW4,R:DOWNLD4.FNT
ACOY,0^MMT^MD+0
AXZ
AXAACI0,167,167^XZ
AXA
APR3^FS
AMNY^FS
AFT28,71^A0N,34,26^FDITEM:^FS
ABY3,2,5^FS
AFT171,122^BCN,102,N,N,Y^FD>:$ITEM_NO$^FS
AFT335,148^ABN,22,14^FH^FD$ITEM_5^FNO$^FS
AFT28,282^A0N,34,26^FD$SERIAL NO:^FS
ABY3,2,5^FS
AFT175,321^BCN,102,N,N,Y^FD>:$SER_NUM$^FS
AFT339,347^ABN,22,14^FH^FD$SER_NUM$^FS
AISSTRNWARE,N^FS
AXZ
AXA
APR3^FS
AILSTRNWARE^FS
APF0^FS
APQ$NO_LBL$,0,0,Y
AXZ
AXA
AIDSTRNWARE
AXZ
```

Your finished converted file format should appear similar to this, depending on your printer.



```
inivbi.txt - Notepad
File Edit Format View Help
^XA
^CW1, R: DOWNLD1. FNT
^CW2, R: DOWNLD2. FNT
^CW3, R: DOWNLD3. FNT
^CW4, R: DOWNLD4. FNT
^COY, 0^AMMT^AMD+0
^XZ
^XA^ACI0, 167, 167^XZ
^XA
^PR3^AFS
^AMNY^AFS
^FT28, 71^AQN, 34, 26^FDITEM:^AFS
^BY3, 2, 5^AFS
^FT171, 122^BCN, 102, N, N, Y^FD>:$ITEM_NO$^AFS
^FT335, 148^ABN, 22, 14^FH^FD$ITEM_NO$^AFS
^FT28, 282^AQN, 34, 26^FD SERIAL NO:^AFS
^BY3, 2, 5^AFS
^FT175, 321^BCN, 102, N, N, Y^FD>:$SER_NUM$^AFS
^FT339, 347^ABN, 22, 14^FH^FD$SER_NUM$^AFS
^ISSTRNWARE, N^AFS
^XZ
^XA
^PR3^AFS
^ILSTRNWARE^AFS
^RF0^AFS
^PO$NO_LBL$, 0, 0, Y
^XZ
^XA
^IDSTRNWARE
^XZ
```

If you wish to add or edit this file, open the .qdf file, change your data, save as, and follow the process to convert your file. You can have many different labels in *UltraPrint*, and choose which one is needed when your print through MAS90/MAS200.

Now you are ready to install and setup *UltraPrint*. Follow the included UltraPrint Installation Guide to install and setup UltraPrint.

Appendix A

Table of MasPrint Label Substitutions for UltraPrint

Label Field Description	Field Length	Inventory Reports	Inventory Receipts	Purchase Order Receipts	Sales Order Reports
1st Custom Office Field in IM_90	n/a	\$IM901ST\$	\$IM901ST\$	\$IM901ST\$	\$IM901ST\$
2nd Custom Office Field in IM_90	n/a	\$IM902ND\$	\$IM902ND\$	\$IM902ND\$	\$IM902ND\$
3rd Custom Office Field in IM_90	n/a	\$IM903RD\$	\$IM903RD\$	\$IM903RD\$	\$IM903RD\$
4th Custom Office Field in IM_90	n/a	\$IM904TH\$	\$IM904TH\$	\$IM904TH\$	\$IM904TH\$
5th Custom Office Field in IM_90	n/a	\$IM905TH\$	\$IM905TH\$	\$IM905TH\$	\$IM905TH\$
Alias Item Number - Customer	30	\$C_ALIAS\$	\$C_ALIAS\$	\$C_ALIAS\$	n/a
Alias Item Number - General	30	\$ALIASIT\$	\$ALIASIT\$	\$ALIASIT\$	\$ALIASIT\$
Alias Item Number - Vendor	30	\$V_ALIAS\$	\$V_ALIAS\$	\$V_ALIAS\$	n/a
Alias Item Number Description	30	\$ALIASDS\$	\$ALIASDS\$	\$ALIASDS\$	N/a
Alias Item Number Description-Customer	30	n/a	n/a	n/a	\$CALIASD\$
Alias Item on Purchase Order	30	n/a	n/a	\$ALIASPO\$	n/a
Alias Item on Sales Order	30	n/a	n/a	n/a	\$ALIASSO\$
Average Cost	10	\$AVGCOST\$	\$AVGCOST\$	\$AVGCOST\$	n/a
Bin Location	10	\$BIN_LOC\$	\$BIN_LOC\$	\$BIN_LOC\$	\$BIN_LOC\$
Category 1 combined with Category 2	20	\$USRDF12\$	\$USRDF12\$	\$USRDF12\$	n/a
Category 1 from IM1 Item Master File	10	\$USERDF1\$	\$USERDF1\$	\$USERDF1\$	\$USERDF1\$
Category 2 from IM1 Item Master File	10	\$USERDF2\$	\$USERDF2\$	\$USERDF2\$	\$USERDF2\$
Category 3 from IM1 Item Master File	10	\$USERDF3\$	\$USERDF3\$	\$USERDF3\$	\$USERDF3\$
Category 4 from IM1 Item Master File	10	\$USERDF4\$	\$USERDF4\$	\$USERDF4\$	\$USERDF4\$
Comment from Purchase Order Header	30	n/a	n/a	\$COMMENT\$	n/a
Comment from Transaction Entry Header	30	n/a	\$COMMENT\$	n/a	n/a
Company Code	3	\$COMP_CD\$	\$COMP_CD\$	\$COMP_CD\$	\$COMP_CD\$
Confirm To from Sales Order Header	30	n/a	n/a	n/a	\$CONTACT\$
Current System Date	30	\$SYSDATE\$	\$SYSDATE\$	\$SYSDATE\$	\$SYSDATE\$
Customer Number	9	n/a	n/a	n/a	\$CUST_NO\$
Customer PO Number	15	n/a	n/a	n/a	\$CUST_PO\$
Economic Order Quantity	10	n/a	\$EORDQTY\$	\$EORDQTY\$	n/a
Extended Item Description Line 1	30	\$EXTDES1\$	\$EXTDES1\$	\$EXTDES1\$	\$EXTDES1\$
Extended Item Description Line 2	30	\$EXTDES2\$	\$EXTDES2\$	\$EXTDES2\$	\$EXTDES2\$
Extended Item Description Line 3	30	\$EXTDES3\$	\$EXTDES3\$	\$EXTDES3\$	\$EXTDES3\$
Extended Item Description Line 4	30	\$EXTDES4\$	\$EXTDES4\$	\$EXTDES4\$	\$EXTDES4\$
Extended Item Description Line 5	30	\$EXTDES5\$	\$EXTDES5\$	\$EXTDES5\$	n/a
Extended Item Description Line 6	30	\$EXTDES6\$	\$EXTDES6\$	\$EXTDES6\$	n/a
From Company Address Line 1	30	n/a	n/a	n/a	\$FRMCADD\$
From Company Address Line 2	30	n/a	n/a	n/a	\$FRMCAD2\$
From Company Address Line 3	30	n/a	n/a	n/a	\$FRMCAD3\$
From Company Name	30	n/a	n/a	n/a	\$FRMCNAM\$
From Company Phone	17	n/a	n/a	n/a	\$PHONENO\$

Label Field Description	Field Length	Inventory Reports	Inventory Receipts	Purchase Order Receipts	Sales Order Reports
Item Cost	10	\$ITMCOST\$	\$ITMCOST\$	\$ITMCOST\$	n/a
Item Description	30	\$ITEMDES\$	\$ITEMDES\$	\$ITEMDES\$	\$ITEMDES\$
Item Memo Line 1	30	\$MEMTXT1\$	\$MEMTXT1\$	\$MEMTXT1\$	n/a
Item Memo Line 2	30	\$MEMTXT2\$	\$MEMTXT2\$	\$MEMTXT2\$	n/a
Item Memo Line 3	30	\$MEMTXT3\$	\$MEMTXT3\$	\$MEMTXT3\$	n/a
Item Memo Line 4	30	\$MEMTXT4\$	\$MEMTXT4\$	\$MEMTXT4\$	n/a
Item Memo Line 5	30	\$MEMTXT5\$	\$MEMTXT5\$	\$MEMTXT5\$	n/a
Item Memo Line 6	30	\$MEMTXT6\$	\$MEMTXT6\$	\$MEMTXT6\$	n/a
Item Memo Line 7	30	\$MEMTXT7\$	\$MEMTXT7\$	\$MEMTXT7\$	n/a
Item Memo Line 8	30	\$MEMTXT8\$	\$MEMTXT8\$	\$MEMTXT8\$	n/a
Item Number	15	\$ITEM_NO\$	\$ITEM_NO\$	\$ITEM_NO\$	\$ITEM_NO\$
Item Weight	10	n/a	n/a	n/a	\$ITM_WGT\$
Job Number	7	n/a	\$JOB_NUM\$	\$JOB_NUM\$	n/a
Lot Quantity (only if Item Valuation is Lot)	10	n/a	\$LOT_QTY\$	\$LOT_QTY\$	n/a
Lot/Serial Number	15	\$SER_NUM\$	\$SER_NUM\$	\$SER_NUM\$	n/a
Lot/Serial Number Description (Lot/Ser)	30	\$SERDESC\$	\$SERDESC\$	\$SERDESC\$	n/a
MAS90 User Code	3	\$USER_CD\$	\$USER_CD\$	\$USER_CD\$	\$USER_CD\$
Maximum on Hand	10	\$MAXHAND\$	\$MAXHAND\$	\$MAXHAND\$	n/a
Number of Labels to Print	5	\$NO_LBLS\$	\$NO_LBLS\$	\$NO_LBLS\$	\$NO_LBLS\$
Order Date	8	n/a	n/a	n/a	\$ORDDATE\$
Product Line	4	\$PRODLIN\$	\$PRODLIN\$	\$PRODLIN\$	\$PRODLIN\$
Product Line Description	30	\$PL_DESC\$	\$PL_DESC\$	\$PL_DESC\$	\$PL_DESC\$
Purchase Order Number	7	n/a	n/a	\$PURCHNO\$	n/a
Purchase Unit of Measure	4	\$PUR_UOM\$	\$PUR_UOM\$	\$PUR_UOM\$	n/a
Purchase Unit of Measure Quantity	10	\$PUM_QTY\$	\$PUM_QTY\$	\$PUM_QTY\$	n/a
Reference Number	6	n/a	\$RECPTNO\$	\$RECPTNO\$	n/a
Reorder Point Quantity	10	\$REORDER\$	\$REORDER\$	\$REORDER\$	n/a
Routing Number	20	\$ROUTENOS\$	\$ROUTENOS\$	\$ROUTENOS\$	\$ROUTENOS\$
Sales Order Number	7	n/a	n/a	n/a	\$ORDERNO\$
Sales Unit of Measure	4	\$SLS_UOM\$	\$SLS_UOM\$	\$SLS_UOM\$	\$SLS_UOM\$
Sales Unit of Measure Quantity	10	n/a	n/a	n/a	\$SUM_QTY\$
Second Alias Item Number – General	30	\$ALIAS_2\$	\$ALIAS_2\$	\$ALIAS_2\$	n/a
Ship To Company Address	30	n/a	n/a	n/a	\$TOCADDR\$
Ship To Company Address Line 2	30	n/a	n/a	n/a	\$TOCADD2\$
Ship To Company Address Line 3	30	n/a	n/a	n/a	\$TOCADD3\$
Ship To Company City, State and Zip	32	n/a	n/a	n/a	\$TOCCSZP\$
Ship To Company Name	30	n/a	n/a	n/a	\$TOCNAME\$
Shipping Container Code: 13 character Alias plus check digit	14	\$SCC14NO\$	\$SCC14NO\$	\$SCC14NO\$	n/a
Standard Price	10	\$STDPRIC\$	\$STDPRIC\$	\$STDPRIC\$	\$STDPRIC\$
Standard Unit of Measure	4	\$STD_UOM\$	\$STD_UOM\$	\$STD_UOM\$	\$STD_UOM\$
Suggested Retail Price	10	\$SUGGRET\$	\$SUGGRET\$	\$SUGGRET\$	\$SUGGRET\$
Transaction (Receipt) Date	8	n/a	\$RECDATE\$	\$RECDATE\$	n/a
Unit of Measure from Inventory Transaction File	4	n/a	\$UNITOFM\$	n/a	n/a
Unit of Measure from Purchase Order	4	n/a	n/a	\$UNITOFM\$	n/a
Unit of Measure from Sales Order	4	n/a	n/a	n/a	\$UNITOFM\$

Label Field Description	Field Length	Inventory Reports	Inventory Receipts	Purchase Order Receipts	Sales Order Reports
Unit Price from Sales Order	10	n/a	n/a	n/a	\$UNITPRC\$
User Defined Description 1 from IM Ultraprint Setup	30	\$LABDES1\$	\$LABDES1\$	\$LABDES1\$	\$LABDES1\$
User Defined Description 2 from IM Ultraprint Setup	30	\$LABDES2\$	\$LABDES2\$	\$LABDES2\$	\$LABDES2\$
User Defined Description 3 from IM Ultraprint Setup	30	\$LABDES3\$	\$LABDES3\$	\$LABDES3\$	\$LABDES3\$
Vendor Name	30	n/a	n/a	\$VENDNAM\$	n/a
Vendor Number	9	\$VEND_NO\$	\$VEND_NO\$	\$VENDNUM\$	n/a
Warehouse Address Line 1	30	\$WHSADD1\$	\$WHSADD1\$	\$WHSADD1\$	n/a
Warehouse Address Line 2	30	\$WHSADD2\$	\$WHSADD2\$	\$WHSADD2\$	n/a
Warehouse Address Line 3	30	\$WHSADD3\$	\$WHSADD3\$	\$WHSADD3\$	n/a
Warehouse Code	3	\$WARECOD\$	\$WARECOD\$	\$WARECOD\$	\$WARECOD\$
Warehouse Description	30	\$WAREDES\$	\$WAREDES\$	\$WAREDES\$	n/a
Warehouse Name	30	\$WHSNAME\$	\$WHSNAME\$	\$WHSNAME\$	n/a

Blytheco LLC The Premier Sage Software Business Partner



**National Presence
Local Touch**

Sage Software Business Partner of the Year

Corporate Offices

<p>Orange County, California 23161 Mill Creek Drive Laguna Hills, California 92653 Phone: (949) 583.9500 Toll Free: (800) 425.9843 Fax: (949) 583.0649 www.blytheco.com</p>	<p>Atlanta, Georgia 1100 Johnson Ferry Road, Ste. 450 Atlanta, Georgia 30342 Phone: (404) 841.6240 Toll Free: (800) 455.1368 Fax: (404) 841.6243 solutions@blytheco.com</p>
---	---

Complete Sage Software Solutions
Sage MAS 500 ◊ Sage MAS 200 ◊ Sage MAS 90
Sage BusinessWorks ◊ Sage SalesLogix CRM ◊ ACT! by Sage
Sage ABRA HRMS ◊ Sage FAS ◊ Sage MIP Fund Accounting & Fundraising

Offices in these cities & states:
Atlanta, GA ◊ Chicago, IL ◊ Los Angeles, CA ◊ Orange County, CA ◊ Tampa, FL
Colorado ◊ Missouri ◊ New Jersey ◊ Ohio ◊ Oklahoma ◊ Pennsylvania ◊ Tennessee
Texas ◊ Washington