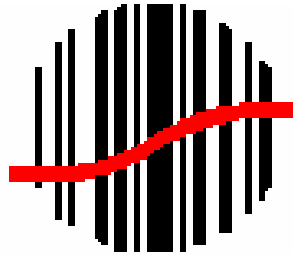


# INSTALLATION AND SETUP GUIDE FOR SCANCO RF SOLUTION MAS90/200 version 4



The Premier Sage Software Business Partner

**Orange County, California**  
23161 Mill Creek Drive  
Laguna Hills, California 92653  
Phone: (949) 583.9500  
Toll Free: (800) 425.9843  
Fax: (949) 583.0649

[www.blytheco.com](http://www.blytheco.com)

**Corporate Offices**

**Atlanta, Georgia**  
1100 Johnson Ferry Road, Ste. 450  
Atlanta, Georgia 30342  
Phone: (404) 841.6240  
Toll Free: (800) 455.1368  
Fax: (404) 841.6243

[solutions@blytheco.com](mailto:solutions@blytheco.com)

**Sage Software Business Partner of the Year**

**Complete Sage Software Solutions**

Sage MAS 500 ◊ Sage MAS 200 ◊ Sage MAS 90  
Sage BusinessWorks ◊ Sage SalesLogix CRM ◊ ACT! by Sage  
Sage ABRA HRMS ◊ Sage FAS ◊ Sage MIP Fund Accounting & Fundraising

**Offices in these cities & states:**

Atlanta, GA ◊ Chicago, IL ◊ Los Angeles, CA ◊ Orange County, CA ◊ Tampa, FL  
Colorado ◊ Missouri ◊ New Jersey ◊ Ohio ◊ Oklahoma ◊ Pennsylvania ◊ Tennessee  
Texas ◊ Washington

National Presence - Local Touch

## BEFORE INSTALLING SCANCO MAS90 RF SOLUTION

---

BEFORE you install the Scanco RF program, verify that the version indicated on the CD is the same as the version of the MAS90/MAS200 Bar Code module you are currently using. DO NOT install this modification if the versions are not the same. Our modifications are version specific, and are written for the most current version levels of standard MAS90/MAS200 software. Contact your MAS90/MAS200 dealer to obtain an upgrade if needed.

*Note: Installation of the RF SOLUTION overwrites the standard Barcode Module files and any custom modifications that you have made to it. If you have purchased a third party enhancement, please notify Scanco's Support Team before installation.*

Access Points and Hand Held(s).....	3
Terminal Services Setup .....	5,6
Enable and Setup Terminal Services Licensing (Application Mode)	
Setup RF user(s) on the Network Domain Controller	
Set fixed ID for each Pocket PC on Terminal Server	
Installing RF Solution .....	7
New User Setup .....	9
Log into using the RF Hand Held .....	12
Tips.....	14
Troubleshooting .....	15,16

Contact Scanco with any questions at:

Software Support	330-645-9959 x128
Fax	330-645-9969
Web	<a href="http://www.scanco.com">www.scanco.com</a>
E-mail	<a href="mailto:support@scanco.com">support@scanco.com</a>

October, 2005

## **SET UP THE ACCESS POINT(S) and RF HAND HELD(S)**

---

SCANCO'S SUPPORT TEAM HAS SET UP YOUR RF HAND HELD(S) AND ACCESS POINT(S) WITH THE IP NUMBERS AND SSID THAT ARE NOTED ON THE INSERT YOU RECEIVED WITH YOUR PACKAGE.

**If you have more than one Hand Held, confirm there is a unique DEVICE ID for each one. Go to Start>Settings and click on the System Tab. Click on ABOUT to enter a unique DEVICE ID for each Hand Held.**

We have set up **security** with the SSID on both the Access Point and Pocket PC. This security serves as a safety feature for your RF network and prevents foreign wireless devices from logging into your network.

### **Use the following procedures if you need to change settings;**

#### **On the Access Point(s):**

To change the SSID or Security Settings on your Access Point connect the Access Point to your Network, open Internet Explorer on your PC and type in the IP number that was set for the specific Access Point. This will bring you to the access point logon screen. Type in the noted user name and password. To change the IP address, use the Intermec Mobile LAN access Utility included with your Access Point CD.

The SSID and the security set on the Access Point should match the SSID set on each of the Hand Held's **Wireless Network Settings**.

There are several procedures when setting up more than one Access Point at a single location, use the Intermec Mobile LAN access Configuration Wizard in this instance.

#### **On the Hand Held(s):**

The Security on your Hand Held(s) has been set to match the WA22 AP. The following settings have been set by the Scanco Support Team.

Go to **Start>Settings>System Tab**

**About**

Enter a unique Device ID for each Hand Held

**Backlight**

Uncheck "Turn off backlight if ..."

Check the "Turn on backlight when..."

**Clock**

Change to the correct Date, Time and Zone.

**Intermec Settings**

Go to Data Collection>Internal Scanner>

Symbologies - Enable Code 128

Symbologies>UPC/EAN>UPC A xmit as EAN 13 - Uncheck

Symbology Options>postamble – set \r

Click on FILE>Save Settings>FILE>Exit

**Power**

Uncheck both boxes to "Turn off device if...."

**Wireless Network**

Edit Selected Profile, set your SSID and Security preferences and uncheck the box for "Enable Power Management"

Go to **Start>Settings>Connections Tab**

**Connections/Advanced Tab**

Click on Network Card>Network Adapters tab

Click on 802.11b/g Wireless LAN (or 802.11 Prism), click on Use

Specific IP Address and type in appropriate IP Number and Subnet Mask

**Run Registry Save Program**

Start/Programs - click on Registry Save several times.

**Perform a soft reboot on the Hand Held**

Press and hold down the yellow I/O button until the screen goes grey, releases the button and allow the HH to boot up.

**Install Core**

Start>Programs>File Explorer>My Device>Apps>Core>click on Core to Activate.

## Setting up the Menu

Start>Settings>Menu, check appropriate programs.

## TERMINAL SERVICES SETUP

---

**IF NECESSARY, PLEASE CONTACT YOUR NETWORK ADMINISTRATOR FOR ASSISTANCE AND SETUP OF TERMINAL SERVICES.**

1. To run Scanco MAS90/200 RF solution, Terminal Services needs to be run in **Application Mode**.

Go to start > programs > administrative tools > terminal services configuration. Check in **Server Settings** that terminal service is running in **Application Mode**.

If it is not, go to add/remove programs

Delete terminal services

Reinstall, choosing **Application Mode**.

2. To enable **Terminal Services Licensing** on the terminal server.

Go to add/remove programs control panel

Select add/remove windows components

Select **Terminal Services Licensing**

3. In **Terminal Services Licensing Setup**, do one of the following:

-If your network includes several domains, click "your entire enterprise", provide the database location.

An enterprise license server can serve terminal servers on any domain, but the domain must be a windows 2000 domain. For windows 2000 domains, you must enable terminal services licensing on a domain controller.

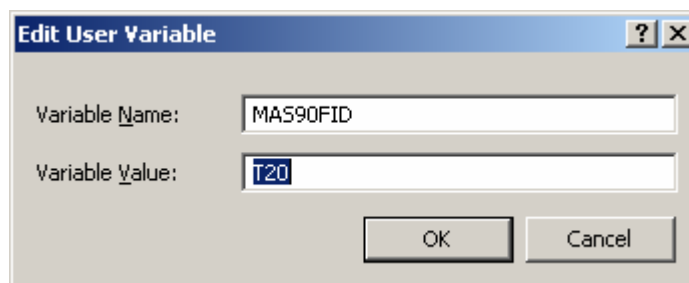
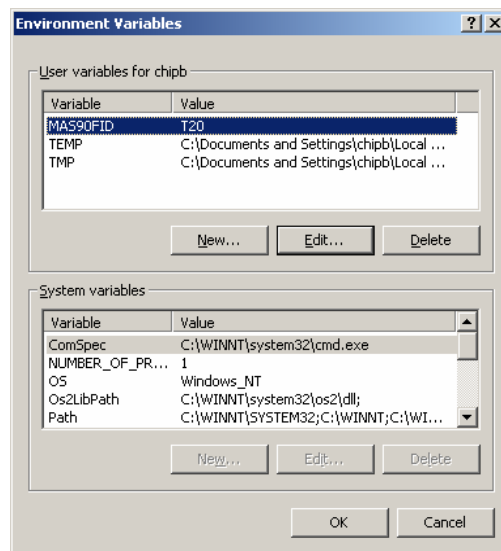
-If you want to maintain a separate license server for each domain, or if your network includes workgroups or windows NT 4.0 domains, click "your domain or workgroup", and then provide the database location.

**Note:** to open Terminal Services Licensing after it's enabled, click start>programs>administrative tools>terminal services licensing.

4. Setup RF user(s) on the Network Domain Controller and **Assign a fixed Terminal ID** to each of your Pocket PC's.

Once you set up each User Account on the Domain Controller go to the Terminal Server and **login as one of your RF users**. Continue this process until each of your users has a different FID.

Log in as one of your RF users and go to **Start-> Settings->Control Panel->System->Advanced Tab** and click on **Environment Variables**. Click **New**, create a Variable **MAS90FID** and assign it a Value of **T** and a number less than 99. Click **OK** to finish.



---

A terminal server will serve up sessions to clients without license tokens for **90 days**. This period known as *license server grace period* and begins from the first time a Terminal Services client connection is made to the terminal server.

After this period you'll be required to purchase TS CAL's (Client Access Licenses) to be able to connect to the Terminal Server using your Pocket PC. The Microsoft Clearing house can be accessed through the Licensing wizard in the Terminal Services Licensing tool.

---

## INSTALLING MAS90/200 RF SOLUTION

---

**ATTENTION! PLEASE, HAVE ALL USERS EXIT MAS90 BEFORE INSTALLING SCANCO MAS90 RF SOLUTION.**

Make sure that you purchased, unlocked and setup MAS90/200 Bar Code Module, including **main upload paths**. To setup default import paths go to the **Bar Code** module, open **Setup** folder, and select **Bar Code Options**.

Bar Code Options

1. Main | 2. Forms

Delete Files After Import  Exclude Renamed Imported Files from Lookup

Rename Import Files Using Extension  Use Alias Item Numbers

Default Path for Inventory Imports

Default Path for Purchase Order Imports

Default Path for Sales Order Imports

Default Path for Bill of Materials Imports

Inventory Management

Prompt for Bar Code Receipt Labels  Device Code for I/M Receipt Label Printer

Prompt for Standard I/M Receipt Labels

Purchase Order

Prompt for Bar Code Receipt Labels  Device Code for P/O Receipt Label Printer

Prompt for Standard P/O Receipt Labels

Accept Cancel

Enter the device used ML ABC 9/1/2004

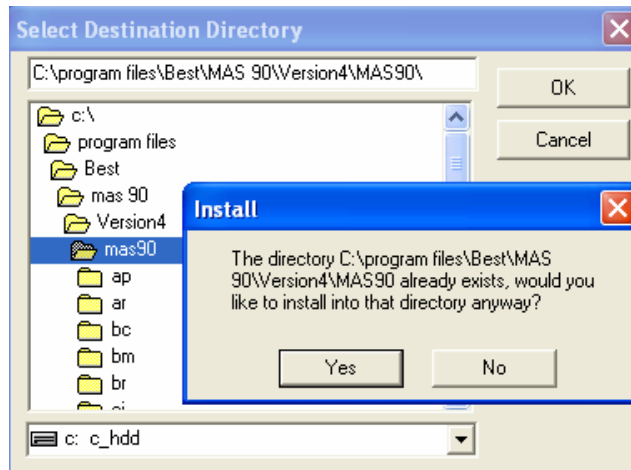
If you haven't setup the Bar Code module, but have already installed Scanco MAS90/200 RF software, you will be prompted to go through the initial Bar Code setup options.

Make sure that **"Use Alias Item Numbers"** checkbox is ticked in the Barcode Options in the Barcode Module, to ensure proper file format import into MAS90/200.

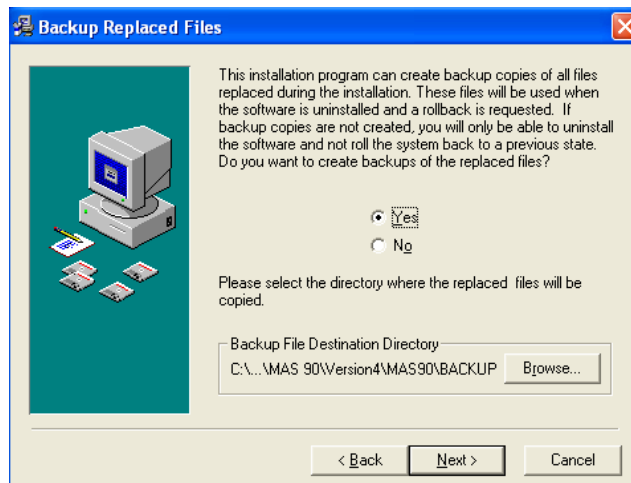
To install Scanco MAS90/200 RF Solution:

- Place your Scanco CD in your PC and run the **MAS90RF.exe** (or **MAS90RF\_Shipping.exe**) Point to the MAS90 folder on your MAS90/200 server as your installation destination directory.

When asked to install in the MAS90 Directory, click **YES**



Scanco recommends that you backup your MAS90 Files when asked.



---



When using **MAS200**, look on your Installation CD to obtain the [dealer.zip](#) program. Unzip and copy the program file with no extensions into MAS90\Home\LIB\\_Appserve folder on the **TERMINAL SERVER**, allow it to replace the existing dealer file.

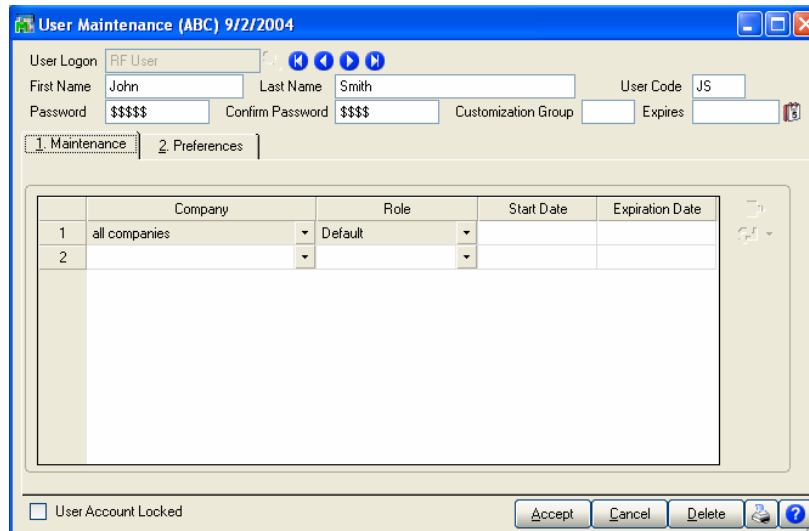
---

## NEW USER SETUP FOR SCANCO MAS90/200 RF

---

In MAS90/200, go to the **Main Tab→User Maintenance**. Setup a unique user ID for each RF Hand Held User.

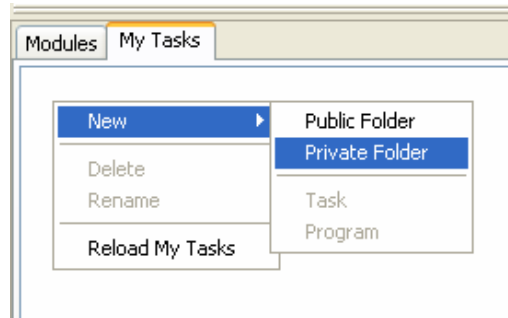
-  **The first two characters of each handheld user ID must be unique, they will be used to create files imported into MAS90/200.**
-  **It is recommended that the RF Users setup in MAS90/200 only have permissions to the RF Task Menu. These users can be given permissions to only the programs on the RF menu that they will use.**



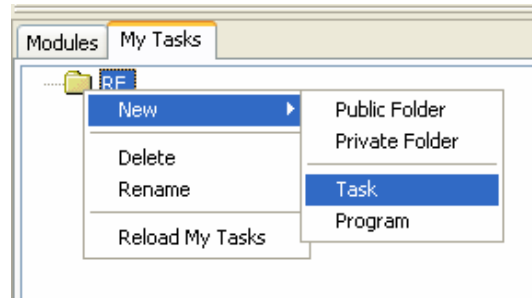
	Company	Role	Start Date	Expiration Date
1	all companies	Default		
2				

**Use the following steps for each of your MAS90/200 RF Users.**

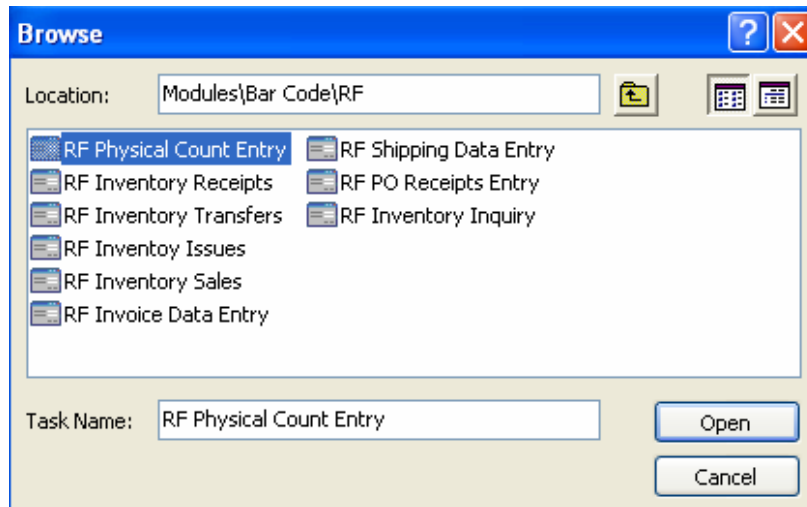
Open MAS90/200, click **File→Change User** and login as the first RF user. Click on the **My Tasks** tab, right click in the white space and scroll over to **New→Private Folder**.



Rename the folder to RF, right click on it and scroll over to **New→Task**.



In the Browse window, find the **Bar Code\RF** folder and choose the appropriate Task for this RF User. Add only those options this particular user will need.



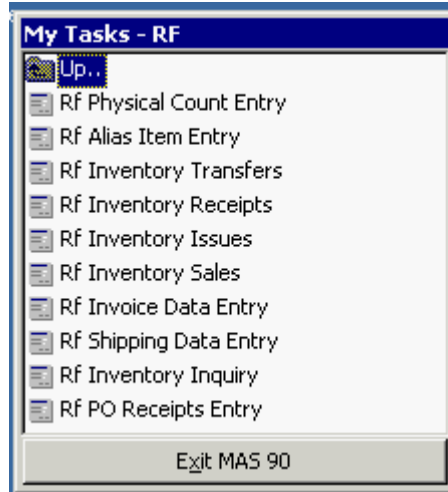
**Set up the MAS90/200 window for the Hand Held.**

Select **View** and check **Start Minimized**. The next time this user logs into MAS90/200 only the Task Menu will be visible.

Next, select **View** and check the **Skip Welcome Page** option.

Close **MAS90/200** and drag the **icon** over to the middle of the monitor screen.

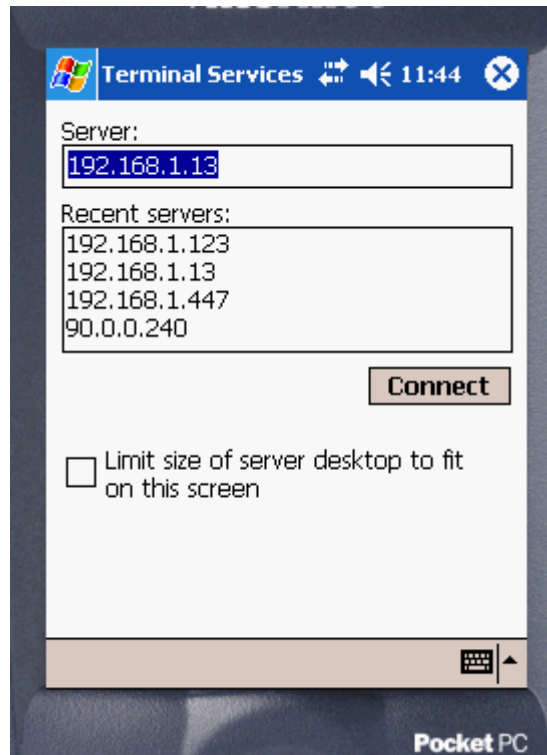
Open **MAS90/200** and drag the **My Tasks** window over to the middle of the screen, on top of the icon. Now, resize the window to fit the screen of your handheld computer.



## LOGIN TO MAS90/200 USING THE RF HANDHELD

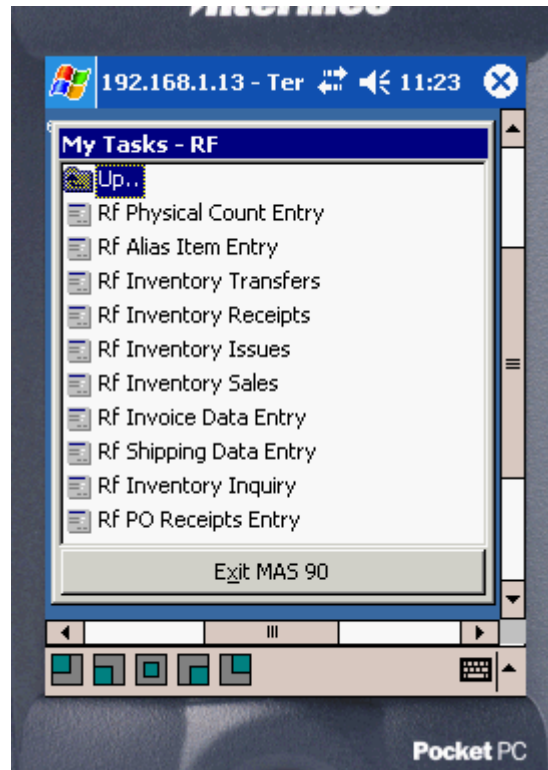
---

Click Start/Terminal Services Client. **DO NOT** check the box "Limit size of server desktop to fit on this screen".



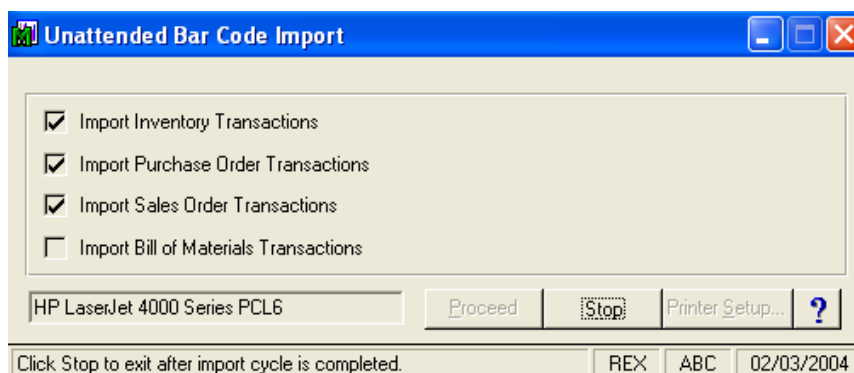
Enter the IP Address of the Terminal Server and click **Connect**. When the handheld connects, you will be prompted to login to the Terminal Server. Enter the login and password. Once you are logged in, double click the MAS90/200 client icon that has been centered on the Terminal Server desktop. (The login and password can be bar-coded for each user.)

You will be prompted for the MAS90/200 User ID and password. After the handheld has successfully logged in the **Task Menu** will be displayed.



The **MAS90/200** icon should be centered in this window, make certain to press the green “centered” button at the bottom left of the Terminal Service screen. You may need to go back and log into **Terminal Service** as this RF User and move the icon and the My Tasks screen a bit to be centered on the Hand Held. This needs to be repeated for each user.

Unattended Bar Code Import is available to import records into MAS90/200 that have been **committed** from the HH. Minimize this box and have it running in the background of MAS90/MAS200. Unattended will continue to run, and scan for files to import every 40 seconds or so. Remember to check your printer for reports.





**NOTE: Scanco RF Shipping Data Entry program is an “add-on” feature that requires purchase in addition to the standard Scanco RF for MAS90 software.**

---

## **Tips**

---

On the Hand Held, press the **Accept** button after each transaction is input, press the **Commit** button when you are ready to upload and import a record. An .odb file is created each time you commit, a report is printed out every time you import a record whether there are errors or not. You can choose to defer printing or print to a PDF.

The Device ID, MAS90/MAS200 login and TS logins do not have to be the same ID.

When setting up the placement of the Access Point, open the CORE program on the Hand Held and walk around the area to ensure full coverage. If CORE changes from three green circles you are losing the Wireless connection; the user will lose their Terminal Server Connection at that point.

You may need to go back and forth from the server to the hand held to get the MAS90/200 icon and the RF Task Menu window centered on the Hand Held. When in Terminal Service on the hand held, make certain the “centered” box at the bottom left is chosen to bring these to the middle of the screen; this will ensure that the RF transaction and lookup windows will be in the center.

**Note --- the Quick Start Guide included on the Installation CD, this will give an overview of the use of the RF transactions.**

## Troubleshooting

---

**Problem:** I cannot get my Hand Held connected to the Terminal Server.

**Solution:** First, make sure that all of the steps were followed for setting up your Terminal Server correctly,

**Enable and Setup Terminal Services Licensing (Application Mode)**  
**Setup RF User(s) on the Network Domain Controller**  
**Set fixed ID for each Pocket PC on Terminal Server**  
**Set up RF user in MAS90/200 and set up their Tasks**  
**Set a unique Device ID on each Pocket PC**  
**Run a soft boot on the Hand Held**

Check the CORE program on the Hand Held, when the indicator bar has 3 green circles, your signal is good. If one or more are yellow or red, the signal is not strong enough. You will not be able to connect to the Terminal Server unless your hand held is in range of the Access Point.

Go over the settings on your Hand Held to make sure that everything is correct. Try connecting with another Hand Held if you have one.

Once everything looks like it should and you are still having difficulty connecting to Terminal Service, try logging in to Terminal Service as an RF User on a workstation to find out if the Hand Held is the issue.

Please contact Scanco Software Support at **330-645-8859x128** or [support@scanco.com](mailto:support@scanco.com) for further instructions.

**Problem:** When a Terminal Services client attempts to connect, the client may be disconnected immediately with the following error message: **"TERMINAL SERVICES CLIENT DISCONNECTED. THE TERMINAL SERVER HAS ENDED THE CONNECTION."**

**Solution:** This behavior occurs when the temporary **90 day** license expires, after the first Terminal Services client connection is made to the Terminal Services server. To resolve this issue, you must purchase a Microsoft Client Access License (CAL). Please call Scanco support for further instructions.

**Problem:** When starting a Terminal Services session with MAS200 and you receive a message that **"... SESSION HAS ALREADY BEEN INITIATED."**

**Solution:** Look on your Installation CD to obtain the [dealer.zip](#) program. Unzip and copy the program file with no extensions into MAS90\Home\LIB\\_Appserve folder on the **TERMINAL SERVER**, allow it to replace the existing dealer file. Right click and scroll down to properties, confirm that all users have complete Read/Write privileges.

**Problem:** After testing everything else on a workstation the RF User is continuing to have log in problems.

**Solution:** Go to both the TS and the MAS servers, to the root of the MAS folder and right click on Properties, Security Tab and make sure all users have complete Read/Write privileges.

 The Premier Sage Software Business Partner

Corporate Offices		Sage Software Business Partner of the Year
<b>Orange County, California</b> 23161 Mill Creek Drive Laguna Hills, California 92653 Phone: (949) 583.9500 Toll Free: (800) 425.9843 Fax: (949) 583.0649 <a href="http://www.blytheco.com">www.blytheco.com</a>	<b>Atlanta, Georgia</b> 1100 Johnson Ferry Road, Ste. 450 Atlanta, Georgia 30342 Phone: (404) 841.6240 Toll Free: (800) 455.1368 Fax: (404) 841.6243 <a href="mailto:solutions@blytheco.com">solutions@blytheco.com</a>	<b>Complete Sage Software Solutions</b> Sage MAS 500 ◊ Sage MAS 200 ◊ Sage MAS 90 Sage BusinessWorks ◊ Sage SalesLogix CRM ◊ ACT! by Sage Sage ABRA HRMS ◊ Sage FAS ◊ Sage MIP Fund Accounting & Fundraising <b>Offices in these cities &amp; states:</b> Atlanta, GA ◊ Chicago, IL ◊ Los Angeles, CA ◊ Orange County, CA ◊ Tampa, FL Colorado ◊ Missouri ◊ New Jersey ◊ Ohio ◊ Oklahoma ◊ Pennsylvania ◊ Tennessee Texas ◊ Washington

National Presence - Local Touch