

Property Availability:

The Property Availability Inquiry works like Inventory Inquiry in standard MAS 90, showing the availability of Units on a Property. It allows managers quick access to vacancy information.

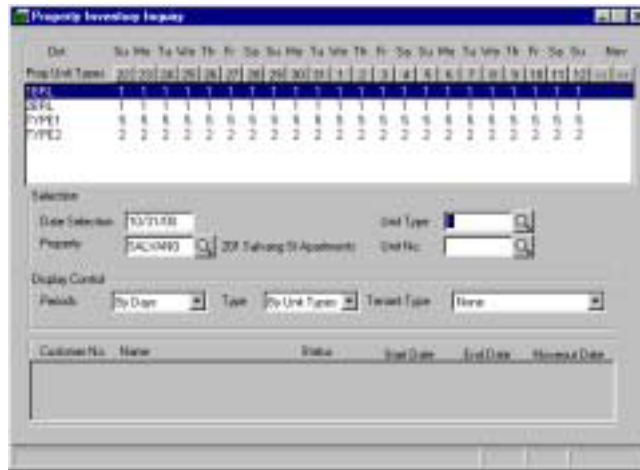
The System Date will automatically populate the Date Selection Field.

However, managers can change this to view information about prior period availability as well as future period availability.

There are two options for viewing this Inquiry. Select Days to review the availability by days in a month. Select Months to view availability by month over the

entire year.

Select Unit Types to review availability by the Unit Type assigned in Unit Maintenance.



Select Units to view only specified Units. When this option is turned on, users can enter specific Unit numbers as well as specific Tenant Types (Current,

Future, and Past). On the display, a zero in a period indicates no availability for that Unit or Type. Any other number indicates the number of that Unit or Type available in that period.

Quick Facts

- Use the scroll button along the top to scroll into past and future occupancy and vacancy information.
- Choose to view all Units, specific Unit Types, or even Specific Units.
- Choose to view all Tenants or specific Tenant Types.

Helpful Hints

This screen allows the user to drill down simply by double-clicking on the desired item.

When viewing by Unit Type, users can select a Type and drill down to view the availability of all the Units of that type in the selected company.

Reports with this Data:

- *Occupancy Report*
- *Vacancy Report*

Occupancy & Vacancy History

The Property Availability Inquiry allows managers to quickly view occupancy and vacancy information. Once a Property has been selected, the system brings up the Units attached to that Property.

The View can be toggled between Days and Months, as well as Unit and Unit Type. Managers can choose to view future and Co-Tenant Status as well as view Past and Future Vacancy information.

Property Inventory Inquiry

Oct	Mo	Tu	We	Th	Fr	Sa	Su	Mo	Tu	We	Th	Fr	Sa	Su	Mo	Tu	We	Th	Fr	Sa	Su	Mo	Nov
Prop Unit Types: 30 31 1 2 3 4 5 6 7 8 9 10 11 12 13 14 15 16 17 18 19 20 << >>																							
01500	0	0	0	0	0	0	0	0	0	0	0	0	0	0	0	0	0	0	0	0	0	0	0
02000	0	0	0	0	0	0	0	0	0	0	0	0	0	0	0	0	0	0	0	0	0	0	0
RMED	0	0	0	0	0	0	0	0	0	0	0	0	0	0	0	0	0	0	0	0	0	0	0
TYPE1	0	0	0	0	0	0	0	0	0	0	0	0	0	0	0	0	0	0	0	0	0	0	0
TYPE2	1	1	1	1	1	1	1	1	1	1	1	1	1	1	1	1	1	1	1	1	1	1	1

Selection: Date Selection: 11/08/00 Unit Type: Property: MAIN 123 Main St Business Park Unit No. Display Control: Periods: By Days Type: By Unit Types Tenant Type: Current And Future

Customer No.	Name	Status	Start Date	End Date	Moveout Date

By Days

At left, the Property Availability Inquiry is configured to view Unit Vacancies by day from October to November. This is a much more specific detail of Unit Vacancy by showing the Move-out Date of the Current Tenant as well as the Move-In date of Future Tenants. By highlighting a particular unit, Current and Future Tenants are displayed in the memo box.

Property Inventory Inquiry

2000	Fe	Ma	Ap	Ma	Ju	Ju	Au	Se	Oc	No	De	Ja	Fe	Ma	Ap	Ma	Ju	Ju	Au	Se	Oc	No	2001
Prop Unit Types: 2 3 4 5 6 7 8 9 10 11 12 1 2 3 4 5 6 7 8 9 10 11 << >>																							
1BRL	0	0	0	0	1	1	1	1	1	1	1	1	1	1	1	1	1	1	1	1	1	1	1
2BRL	1	1	1	1	1	1	1	1	1	1	1	1	1	1	1	1	1	1	1	1	1	1	1
TYPE1	5	5	5	5	5	5	5	5	5	5	5	5	5	5	5	5	5	5	5	5	5	5	5
TYPE2	2	2	2	2	2	2	2	2	2	2	2	2	2	2	2	2	2	2	2	2	2	2	2

Selection: Date Selection: 11/08/00 Unit Type: Property: SALVANG 201 Salvang St Apartments Unit No. Display Control: Periods: By Months Type: By Unit Types Tenant Type: None

Customer No.	Name	Status	Start Date	End Date	Moveout Date

By Month

At right, the Property Availability Inquiry is configured to view Unit Vacancies by month from 2000 to 2001. By highlighting a particular Unit, Current and Future Tenants are displayed in the memo box.

