



SAGE MAS 90 SAGE MAS 200

SAGE BUSINESSWORKS DATA MIGRATOR

THE DATA MIGRATOR WILL CONVERT:

General Ledger

- Charts of Accounts
- Budgets
- Balance Histories

Accounts Receivable

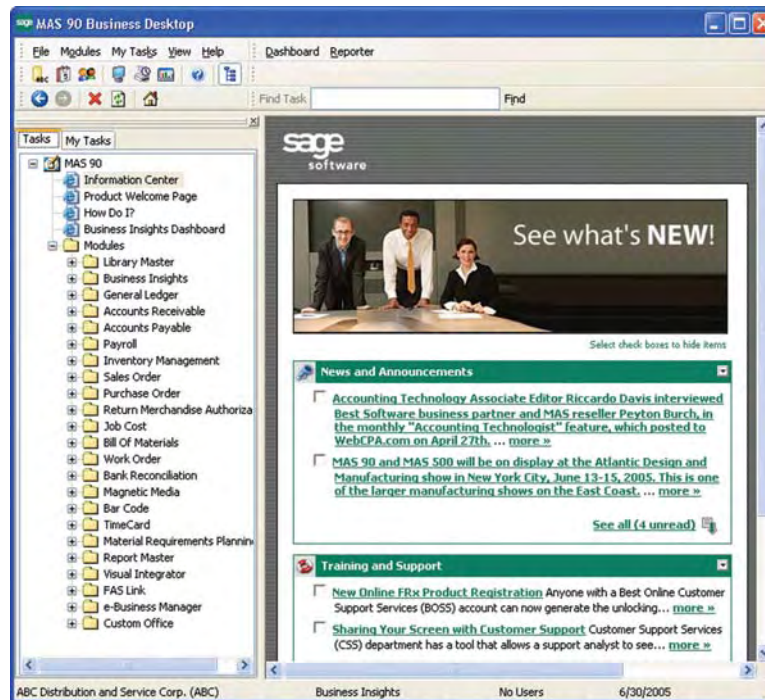
- Customer Masterfile
- Customer Contacts
- Open Invoices and Credit Memos
- Terms Codes
- Salespersons

Accounts Payable

- Vendor Masterfile
- Vendor Contacts
- Terms Codes
- Vendor 1099 Status
- Open Invoices and Credit Memos

Inventory Management

- Product Lines
- Warehouses
- Item Masterfile
- Locations
- Item Quantities
- Item Cost and Price Information



Sage BusinessWorks Accounting is an excellent product for small businesses that are just getting started. However, as your business grows, your accounting needs change. Sage Software understands the challenge of a growing business, which is why we offer a straightforward migration path to Sage MAS 90 and Sage MAS 200 ERP systems and to the next level of functionality.

Making a change from software that you are comfortable with is seldom easy. To help make the conversion process fast and simple, Sage Software has designed the Data Migrator to assist Sage BusinessWorks customers like you, in a painless change to Sage MAS 90 or 200 software. Enjoy all the benefits of increased functionality, customization capabilities, and flexible reporting without the need to re-key your important information. The Data Migrator can save valuable time and resources in today's fast-paced business environment.

The Conversion Guide is another helpful tool that can alleviate anxiety and minimize down time when converting data. The guide outlines the workflow differences between Sage BusinessWorks and Sage MAS 90, and correctly sets your expectations when converting your data.

Our nationwide network of qualified Sage MAS 90 and 200 Conversion Specialists have the exclusive rights to our special Data Migrator. Specialists can quickly accomplish data conversion to Sage MAS 90 and 200 from Sage BusinessWorks. (Check with your Conversion Specialist for the specific version of Sage BusinessWorks.) Not only can our Conversion Specialists demonstrate the flexible, intuitive, and customizable features available in Sage MAS 90 and 200, they can also minimize the time it takes to convert your data and make it operational on your new Sage MAS 90 or 200 system. Your data will be up and running on your new system in virtually no time.

Enjoy the advantage of staying within the Sage Software family of products. You can count on the same award-winning level of support and the comfort of working with the software leader for small to midsized businesses.



Sage MAS 90 and Sage MAS 200

Sage BusinessWorks Data Migrator

"Our consultant used Sage MAS 90 Data Migrator to convert all of our information from Sage BusinessWorks to Sage MAS 90. The transition went very smoothly, much better than we had expected."

Cathy Marks, Accountant
Hayden ConcreteRodney

FEATURES

Conversion Specialists	Our nationwide network of qualified conversion specialists has exclusive rights to the Data Migrator, to ensure a smooth conversion of your data.
Conversion Guide	Sage MAS 90—BusinessWorks Edition includes a Conversion Guide that helps answer common conversion questions.
Limited Down Time	Due to the Data Migrator's unique design, your Conversion Specialist will be able to test-run conversions without taking precious business time—this means minimal down time during migration.
Ease of Use	Sage MAS 90—BusinessWorks Edition was designed with growing businesses, like yours, in mind. It's no wonder Sage MAS 90 is recommended by more CPAs than any other mid-sized accounting software.
Scalability	Once you are using Sage MAS 90—BusinessWorks Edition and your business continues to grow, it's simple to expand your system and add more modular functionality, or even move up to client/server like Sage MAS 200 or Sage MAS 500.



**National Presence
Local Touch**

Sage Software Business Partner of the Year

Corporate Offices

Orange County, California

23161 Mill Creek Drive
Laguna Hills, California 92653
Phone: (949) 583.9500
Toll Free: (800) 425.9843
Fax: (949) 583.0649

www.blytheco.com

Atlanta, Georgia

1100 Johnson Ferry Road, Ste. 450
Atlanta, Georgia 30342
Phone: (404) 841.6240
Toll Free: (800) 455.1368
Fax: (404) 841.6243

solutions@blytheco.com

Complete Sage Software Solutions

Sage MAS 500 ◊ Sage MAS 200 ◊ Sage MAS 90
Sage BusinessWorks ◊ Sage SalesLogix CRM ◊ ACT! by Sage
Sage ABRA HRMS ◊ Sage FAS ◊ Sage MIP Fund Accounting & Fundraising

Offices in these cities & states:

Atlanta, GA ◊ Chicago, IL ◊ Los Angeles, CA ◊ Orange County, CA ◊ Tampa, FL
Colorado ◊ Missouri ◊ New Jersey ◊ Ohio ◊ Oklahoma ◊ Pennsylvania ◊ Tennessee
Texas ◊ Washington



56 Technology Drive • Irvine, CA 92618-2301 • 800-854-3415 • www.sagesoftware.com

©2005 Sage Software, Inc. All rights reserved. The Sage Software logo, Sage MAS 90, Sage MAS 200, and Sage BusinessWorks are registered trademarks or trademarks of Sage Software, Inc., or its affiliated entities. All other trademarks are the property of their respective owners.

SMAS054 10/05 05-3816/1005