



GL Multiple Companies Journal Entries
Save time processing inter-company or multi-company journal entries.

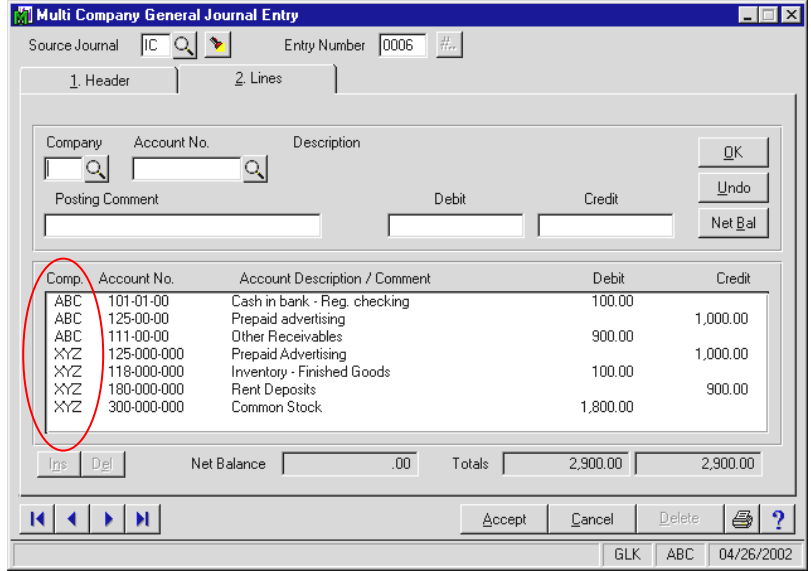
This enhancement will allow you to enter G/L Journal Entries for ALL Companies setup in MAS 90 without having to change Companies. A Company Code field is added to each detail line in a new Multi-Company Journal Entry option, which allows you to specify which Company to post each entry line to.

Each Company's G/L Accounts are available for use and can be listed for viewing. After the Journal entries are entered, the program will verify that the Journal Entry as a whole and each Company is in balance. After the General Journal is printed and updated, the Journal Entry lines will be posted to the appropriate Companies and Accounts.

This enhancement is useful for users who process multiple companies each month and want to save time by only having to enter and process Journal Entries one time.

Standard Features:

- ◆ Enter Journal Entries for multiple companies without changing Companies
- ◆ Use each Company's own General Ledger Accounts within one Journal Entry
- ◆ Verifies that each Company entered in the Journal Entry is in balance
- ◆ Journal entries are automatically posted to the correct Company and Accounts



Run Date: 04/26/02 ABC Distribution and Service Corp. Page: 1
G/L Date: 04/26/02 Multi-Company General Journal Time: 05:00 PM

SOURCE JOURNAL	POSTING DATE	JOURNAL COMMENT	REVERSING DATE	DEBIT	CREDIT
IC-0006	05/31/03				
ABC	101-01-00	Cash in bank - Reg. checking		100.00	
ABC	125-00-00	Prepaid advertising			1,000.00
ABC	111-00-00	Other Receivables		900.00	
XYZ	125-000-000	Prepaid Advertising			1,000.00
XYZ	118-000-000	Inventory - Finished Goods		100.00	
XYZ	180-000-000	Rent Deposits			900.00
XYZ	300-000-000	Common Stock		1,800.00	
JOURNAL IC-0006 TOTALS:				2,900.00	2,900.00
SOURCE IC TOTALS:				2,900.00	2,900.00
REPORT TOTALS:				2,900.00	2,900.00

Pricing	\$ 1,500	Initial purchase (Includes 1 st year Subscription Plan)
	\$ 375	Annual Support Plan - This includes unlimited telephone support for this enhancement.
	\$ 375	Annual Subscription - This includes all updates and fixes for this enhancement and compatibility upgrades for future MAS 90 version releases.

MAS 200 SQL – Call for Pricing

www.blytheco.com/enhance/glje.asp

Blytheco, LLC
23161 Mill Creek Drive, #200
Laguna Hills, CA 92653
Phone (949) 583-9500, ext. 192
Fax (949) 583-0649
E-Mail esales@blytheco.com
Web www.blytheco.com

The software described herein is designed and published by Blytheco, LLC. Sage Software, Inc. has not tested or verified either the software or any representation made herein regarding the software. Sage Software does not make any warranty with respect to the software described herein, and specifically disclaims any warranty, express or implied, with respect thereto, including the warranties of fitness for a particular purpose and merchantability.