

How many times will you post to your General Ledger with the wrong date before you buy this enhancement? MAS 90 and MAS 200 applications are Date Sensitive. Without proper date maintenance, the General Ledger will be out of balance with the Application Trial Balance. This enhancement automatically changes your Application Date to the system date for ALL Applications, Companies or any combination of the above.

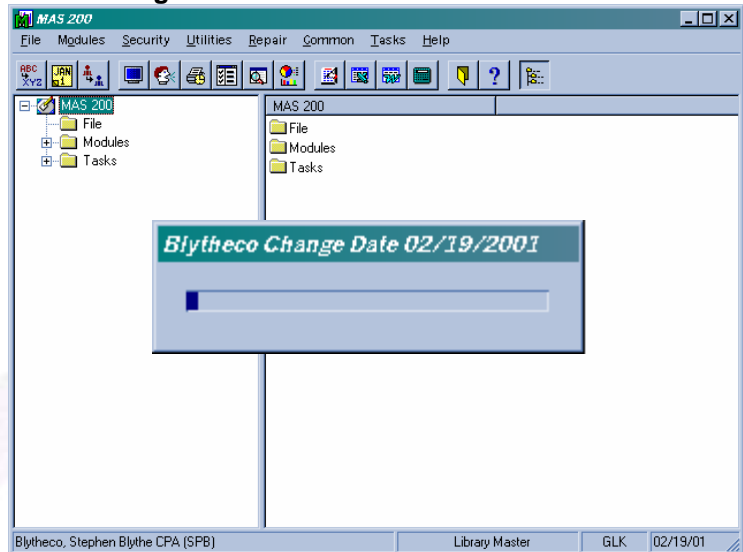
### Standard Features:

- ◆ Change the Run and Operating System Date (some O/S only)
- ◆ Change the Application Date for the Current or ALL Terminals
- ◆ Change the Application Date for Selected or ALL Companies
- ◆ Change the Application Date for Selected or ALL Applications
- ◆ Change the Run and Application Date for combinations of the above

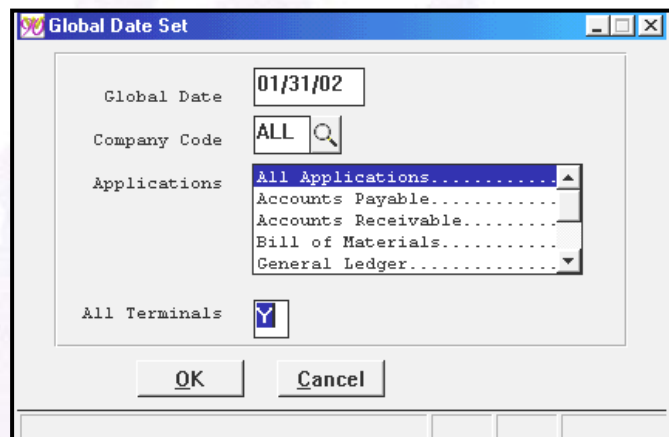
The software described herein is designed and published by Blytheco, LLC. Sage Software, Inc. has not tested or verified either the software or any representation made herein regarding the software. Sage Software does not make any warranty with respect to the software described herein, and specifically disclaims any warranty, express or implied, with respect thereto, including the warranties of fitness for a particular purpose and merchantability.

**Blytheco, LLC**  
 23161 Mill Creek Drive, #200  
 Laguna Hills, CA 92653  
 Phone (949) 583-9500, ext. 192  
 Fax (949) 583-0649  
 E-Mail esales@blytheco.com  
 Web www.blytheco.com

**Dates are automatically changed to today's date when a user logs into MAS 90.**



**Users can manually change a range of companies or applications to a preferred date.**



<b>Pricing</b>	<b>\$ 1,000</b>	<b>Initial purchase</b> (Includes 1 <sup>st</sup> year Subscription Plan)
	<b>\$ 250</b>	<b>Annual Support Plan</b> - This includes unlimited telephone support for this enhancement.
	<b>\$ 250</b>	<b>Annual Subscription</b> - This includes all updates and fixes for this enhancement and compatibility upgrades for future MAS 90 version releases.

MAS 200 SQL – Call for Pricing

[www.blytheco.com/enhance/date.asp](http://www.blytheco.com/enhance/date.asp)