



Sage MAS 90 and MAS 200 3.50 Enhancements

Significant New Features and Benefits Provided at No Charge to Subscription Plan Holders

GENERAL ENHANCEMENTS

EXECUTIVE INFORMATION SYSTEM (EIS)

- Unique to MAS 90 and MAS 200, the EIS allows key managers to view graphical HTML reports without logging into the company's accounting system.
- CEOs, CFOs, directors of sales, business owners and directors of production can create their own home pages with a setup wizard. Once created, the executive can then view the company's vital financial information just by opening a Web browser. Accessing your company's critical financial information has never been easier.
- Data contained within the EIS can be set to automatically update at specified time intervals.
- Drill-down features allow financial decisions to be made much more effectively. You'll have access to highly detailed reports right on your homepage.

DIGITAL DASHBOARD INTEGRATION

- Microsoft's Digital Dashboard is an HTML page that is displayed within the Outlook 2000 main window. Users of Outlook 2000 can not only view standard Outlook information such as e-mail, calendar, tasks, etc., but can also see the Executive Information System (see above) and several Web services within the Digital Dashboard, all in one easy interface.

ADVANCED LOOKUP ENGINE (ALE)

- The ALE replaces the existing MAS 90 and MAS 200 search screens displayed when F2 or F9 are pressed. Now when pressing the F2 key, you will see a list view of data that is customizable by company and/or user.
- With a modern display that allows you to add, remove and rearrange the order in which columns appear, ALE sorts your customers by clicking the top of any column, such as phone number or zip code.
- The ALE offers a variety of filter search options including: Begins With, Ends With, Contains, Less Than, Greater Than, Range and Equal To.
- Using a Lookup Customization Wizard, calculated fields can easily be added to the lookup, giving you simple, powerful reporting capabilities and an easy method for accessing vital information.

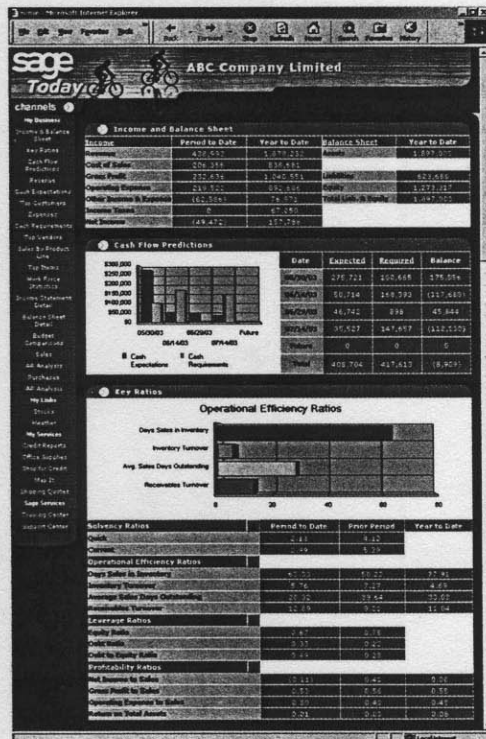
WEB SERVICES

- To take advantage of the technology the Internet provides, several useful Web services have been integrated directly into MAS 90 and MAS 200 where they can benefit your business the most.

- Customer credit reports can be requested and accessed quickly through CreditFYI.com. Simply click on the icon found in Customer Maintenance.
- Package tracking information is available within Invoice History Inquiry, Sales Order Invoice Data Entry, and from e-Business Manager. If a customer calls to inquire about the status of a shipment, simply click on the button within Invoice History Inquiry. A link to iShip.com will provide information automatically from the shipping vendor used.
- Finding the physical location of a customer or vendor has never been easier. Simply click on the map icon, located within Customer and Vendor Maintenance, and you'll be taken directly to a mapquest.com map and directions.
- Another Web service integrated into MAS 90 and MAS 200 is Sage Online Customer Services (SOCS). Click on the button within Help text to find useful information, or to download program changes or tax table updates.

E-BUSINESS MANAGER ENHANCEMENTS

- A new high-performance Web engine for e-Business Manager greatly reduces transaction processing time, and makes better use of system resources.
- "Form-based" data entry allows faster entry of items into the shopping cart. Customers can add multiple items and quantities to the shopping cart at the same time.
- Customers can now enter credit card information as a payment method.



USABILITY ENHANCEMENTS

- To help align standard forms on laser printers, and minimize laser form creeping and extra page ejects, we've added the option to set a form feed for your standard forms.
- Once you preview a report and change the size of the display, the system will now remember the size you selected. The next time you preview the same report, it will be sized to the setting you previously used, remembering your preferences and eliminating unnecessary keystrokes.
- Extended item descriptions, entered on sales orders and invoices, now display from invoice history screens. They can also be printed on invoices that are reprinted from invoice history.
- Selecting the option to print Crystal forms can now be done on a form-by-form basis, instead of having to choose to print Crystal forms for the entire module. This means you can take advantage of high-speed dot matrix printers to print sales orders and picking sheets from the Sales Order module using character forms, yet you can print professional-looking laser Sales Order invoices using the Crystal invoice format.
- In version 3.50, you can see how many customer records exist by simply pressing the F8 key in any maintenance or data entry program.
- During Sales Order entry, one-click access to Customer Last Purchase History is now available. It can also be accessed by the keyboard command Alt-S.

SALES ORDER ENHANCEMENTS

- Two methods of freight calculation have been integrated into the Sales Order module. These can also be used with the e-Business Manager .order applet. First, freight can be pulled from a sliding scale based on the total invoice amount. This method is commonly used by many mail-order catalog companies. Second, it can be shown as a base amount, plus a dollar amount per piece or per weight unit.
- A multi-level approach has been added for assigning sales tax in order to promote accuracy and simplicity, primarily with the .store applet. The information in the Ship-to address is used to apply taxes based on ZIP code and state.

MRP ENHANCEMENTS

- ODBC access has been enabled, thus expanding MRP reporting capabilities.
- "Business policy" MRP generation options have been moved to MRP Options to facilitate correct run time option settings.
- Engineering change orders in Bill of Materials can now take effect based on MRP planned production dates.
- The integration between MRP and Work Order has been tightened. MRP can optionally calculate build times based on the Work Order routings, thus reducing the need for rescheduling auto generated work orders. Also, a new option to explode quantity change and reschedule recommendations to subassemblies and components will decrease production planning time.

BEHIND-THE-SCENES ENHANCEMENTS

- Two new buttons have been added to the Company Maintenance window. The Activate button will activate data files for modules for the selected company. This terminology replaces the "Create Data Files" previously used. Also, the Convert button is used to convert application data from a previous version of the software, in one simple process.
- Crystal Forms can now be used with the MAS 90 and MAS 200 manufacturing modules.
- Manufacturing customers will now be able to create user-defined fields in Work Order and Bill of Materials. This provides a significant increase in flexibility.
- To make it easier to find information when using online Help, we've added a section for each module called "How Do I..." This section contains useful tips on how to accomplish both common and infrequently performed tasks.
- Credit card numbers stored within MAS 90 and MAS 200 are encrypted. For added security, you can determine whether card numbers display in full or if operators can only view the last four digits of a card number.

THIRD-PARTY PRODUCT IMPROVEMENTS

- Seagate Crystal Reports 8 is now included with MAS 90 and MAS 200 version 3.50. Version 8 features major improvements in report performance, including: increased file storage, the ability to export reports to various commonly used formats, a significant improvement in speed performance and more.
- FAS Asset Accounting version 2000.3 is compatible with Crystal Reports 8, so there will not be a forms design conflict for customers using FAS.
- FRx Desktop Standard version 6 is available for MAS 90 and the non-SQL version of MAS 200. For the SQL version, FRx Desktop (formerly known as Advanced FRx) is offered.
- F9 version 4 continues to be compatible with both MAS 90 and MAS 200.
- Compatibility with Windows 2000 and Office 2000 has been verified and tested.



Sage Software, Inc.
56 Technology Drive
Irvine, CA 92618-2301
800-854-3415
www.us.sage.com

©2000, Sage Software, Inc. All rights reserved. Reproduction in whole or in part without permission is prohibited. The capabilities, system requirements and/or compatibility with third-party products described herein are subject to change without notice. Contact Sage Software for current information. Sage is a U.K. trademark of The Sage Group plc. Sage MAS 90 and Sage MAS 200 are trademarks of Sage Software, Inc. Other product names used herein are trademarks or registered trademarks of their respective owners.

5M00902 12/00 00-1250/1000