

MAS 90 MAS 200



Prerelease Guide to Version 4.0

July 2003



The Premier Sage Software Business Partner

Corporate Offices

Orange County, California
23151 Mill Creek Drive
Laguna Hills, California 92653
Phone: (949) 583.9500
Toll Free: (800) 425.9843
Fax: (949) 583.0649

www.blytheco.com

Atlanta, Georgia
1100 Johnson Ferry Road, Ste. 450
Atlanta, Georgia 30342
Phone: (404) 841.6240
Toll Free: (800) 455.1368
Fax: (404) 841.6243

solutions@blytheco.com

Sage Software Business Partner of the Year

Complete Sage Software Solutions

Sage MAS 500 • Sage MAS 200 • Sage MAS 90
Sage BusinessWorks • Sage SalesLogix CRM • ACT! by Sage
Sage ABRA HRMS • Sage FAS • Sage MIP Fund Accounting & Fundraising

Offices in these cities & states:

Atlanta, GA • Chicago, IL • Los Angeles, CA • Orange County, CA • Tampa, FL
Colorado • Missouri • New Jersey • Ohio • Oklahoma • Pennsylvania • Tennessee
Texas • Washington

National Presence - Local Touch

TABLE OF CONTENTS

MAS 90 and MAS 200 v4.0 Overview	4
General Ledger	4
<i>Introduction</i>	4
<i>General Ledger Accounting Structure</i>	5
<i>New Company Setup Wizard</i>	5
<i>New User Interface Standards</i>	6
<i>Allocations</i>	7
<i>Budgets</i>	8
<i>Enhanced Integration with Bank Reconciliation</i>	8
<i>Replacement Mini General Ledger</i>	8
<i>Financial Reporting Compatibility</i>	9
<i>Financials (formerly Standard Financials)</i>	9
<i>Custom Financials</i>	10
<i>F9</i>	10
<i>FRx</i>	10
Global Enhancements – All Modules	11
<i>Business Insights Reporter</i>	11
Global Enhancements in GL for This Release	11
<i>Saved Reports Settings</i>	11
<i>Batch Manager</i>	12
<i>Memo Manager</i>	12
<i>Security Enhancements</i>	14
<i>Personalization</i>	15
<i>ALE Enhancements</i>	15
Integration and Technology	15
<i>Customizer Enhancements</i>	15
<i>External Integration</i>	16
<i>Wide Area Network Support</i>	16
Compatibility and Considerations	16
<i>Import Master and Report Master</i>	16
<i>Visual Integrator</i>	16

<i>Master Console and Auto Update</i>	16
<i>Visual Postmaster and Microsoft Office Link</i>	17
<i>Payroll Direct Deposit Update</i>	17
Availability	17

The release of version 4.0 signifies the beginning of a new era for MAS 90 and MAS 200.

MAS 90 and MAS 200 v4.0 Overview

The release of MAS 90 and MAS 200 version 4.0 signifies the beginning of a new era for the product line. A key component of the product line's success with customers has been our ability to update the software to take advantage of new technologies without starting from scratch. This enables customers to migrate smoothly to new versions.

In 1996, MAS 90 became the instant market leader in Windows-based accounting by virtue of offering this new technology to customers while preserving their historical data and workflow. In 1997, we were the first to market with a thin-client, client/server version subsequently dubbed

MAS 200. This gave customers the benefits of inexpensive wide area network (WAN) connectivity and higher performance. Then in 1999, we resolved the technical hurdles of e-commerce for customers with our easy-to-implement e-Business Manager solution. Plus, in 2000, we added an option to run MAS 200 on the Microsoft SQL Server relational database.

MAS 90 and MAS 200 version 4.0 represents the next step in this evolution by implementing technological enhancements to increase the power and flexibility of the software, while still providing the straightforward migration that customers have come to expect. These technical enhancements will provide important benefits, such as increased customization capabilities, greater ease of integration with industry-specific add-on products, and the ability for Best Software to more quickly add new capabilities in the future.

The benefits of the new architecture will be applied first to the General Ledger module, beginning with expanding the maximum account number size, and extending from there to significant new capabilities throughout the module.

Another important component of this release is the new Business Insights Reporter, which will be available across all modules to provide easier, faster custom reporting. This is only a sample of the many enhancements in the release — implemented as a direct result of customer feedback to further advance our already excellent customer satisfaction ratings.

NOTE: All features listed in this guide are provisional and may not appear in the final release. Best Software makes no guarantees with respect to the functionality of this release, nor will notice be given of any changes.

General Ledger

Introduction

The MAS 90 and MAS 200 4.0 enhancement release represents a significant redesign and update of the entire General Ledger (GL) module. The most significant component is the expansion of the GL account number and structure. This release also includes many improvements to the workflow and capabilities of General Ledger, as well as a new wizard interface for performing new company setup. The General Ledger 4.0 release also represents the first of a new generation of MAS 90 and MAS 200 modules by setting new standards for

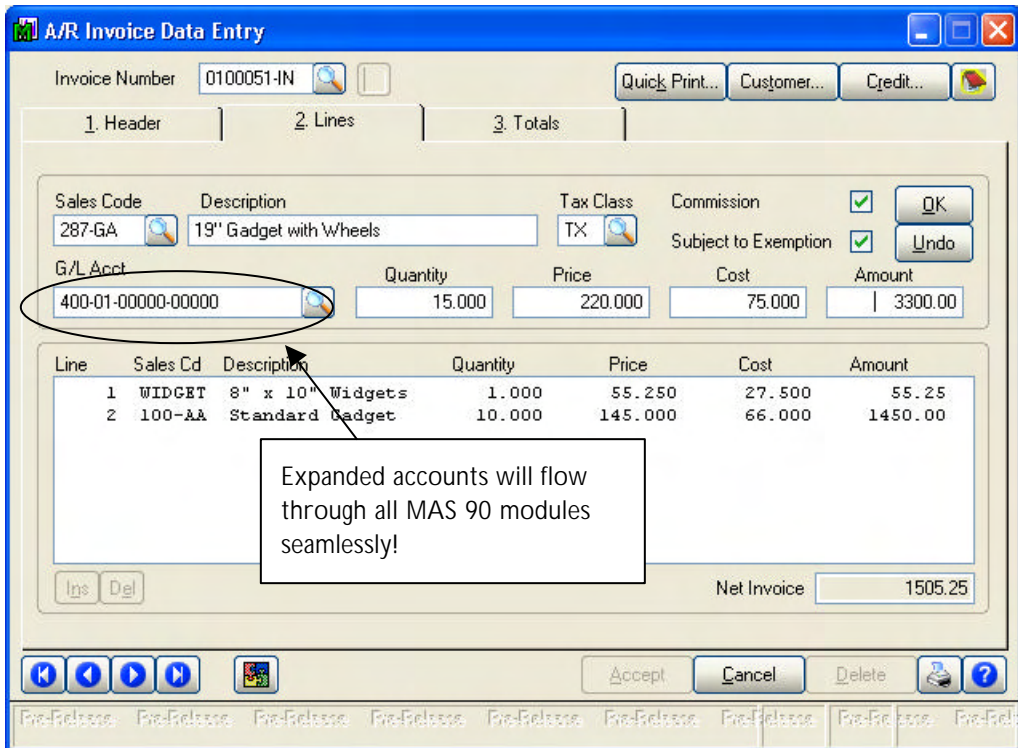
user interface
and capabilities.

General Ledger Accounting Structure

The GL account structure will be expanded to enable users to select up to a maximum of 32 characters with up to 10 segments.

- The expanded account number is compatible with all subsidiary MAS 90 modules.
 - Note: GL custom financials will not be compatible if you take advantage of the expanded account — you will need to use Microsoft FRx.

The following shows how the expanded GL account structure will flow through other modules.



Other account-related features:

- Validated account segments
- Active and inactive accounts with effective dates

New Company Setup Wizard

New companies will be able to easily set up MAS 90 or MAS 200 with the new setup wizard. The wizard will assist you and your customers to make critical decisions based on each company's specific business needs. Included in the wizard will be an optional pre-defined Chart of Accounts to help customers get started on the right track.

New User Interface Standards

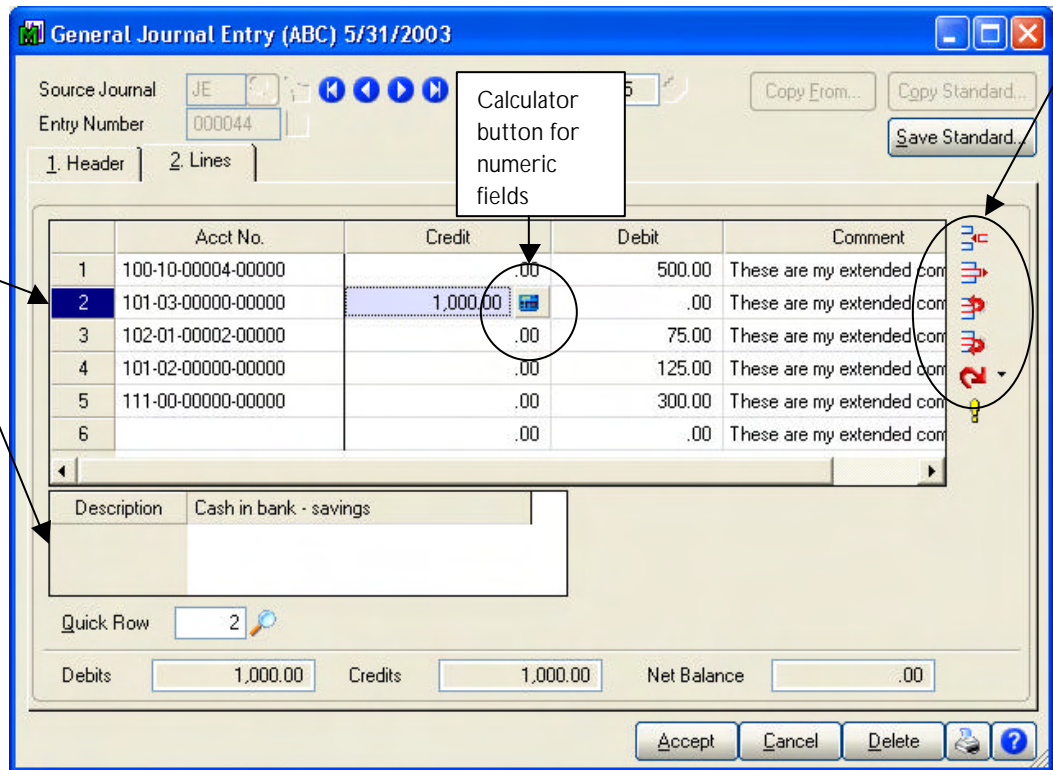
New user interface standards will be introduced in the General Ledger, enabling greater control for heads-down data entry operators. All of the following enhancements will help customers streamline their data entry processes with a minimal learning curve.

- New controls for flexible line entry
 - Customizable column widths
 - Sort/hide fields
 - Undo unsaved changes
- Resizable windows (as required)
- Right click menus and hyperlinks
- Click-and-drag interface
- Modern Windows XP look and feel
- Redesigned icons

Ability to move rows up and down, insert and delete rows quickly and easily!

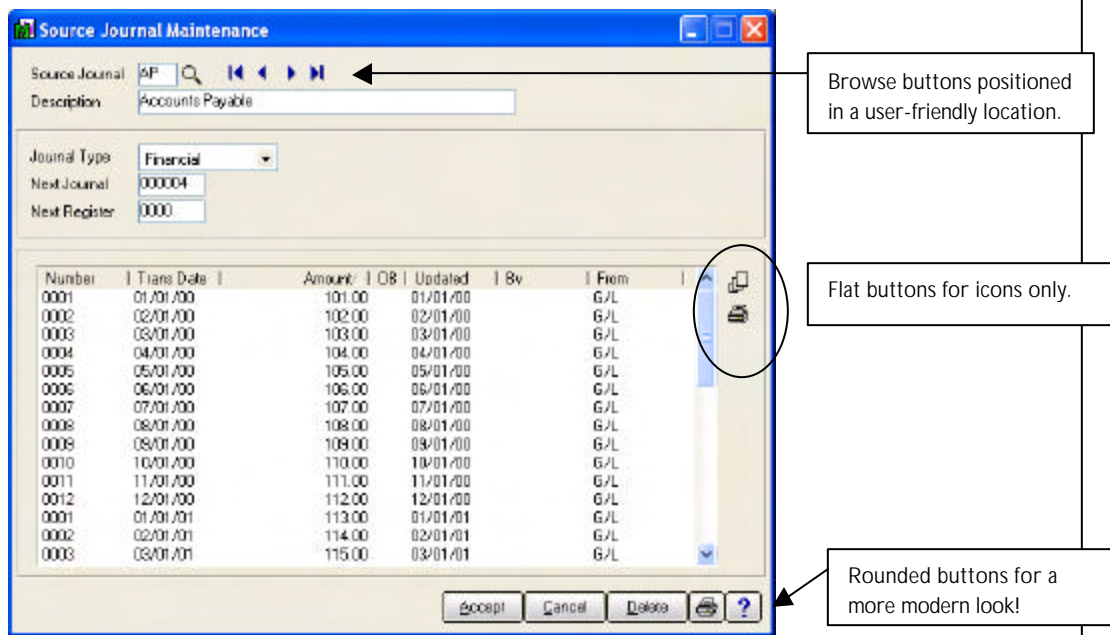
A look at new easy data entry capabilities:

Use the unique dual grid system to view essential information about each data record without having to scroll the screen from ...



Calculator button for numeric fields

Ability to move rows up and down, insert and delete rows quickly and easily!



Allocations

Allocations in MAS 90 and MAS 200 version 4.0 have been significantly enhanced to enable greater flexibility, benefiting both new and existing customers.

Highlights of new features for version 4.0 allocations:

- Source Accounts may be Financial or Non-Financial accounts.
- Automatic allocations may be run at any time for any period.
- A new Basis allocation type (method) will be added.

The Basis allocation enables the customer to distribute the allocation amount from the source account based upon values that are associated with the destination accounts.

Example:

A company is billed for advertising expenses in July for an advertising run in June. The company wishes to allocate advertising in the current period (July) based upon the prior-period (June) sales of each department.

Basis allocations will give MAS 90 and MAS 200 a greater competitive advantage. While many companies will benefit from this enhancement, it is a feature most often found in the higher end of the ERP (enterprise resource planning) market. Basis allocations has been designed with the ease of use and intuitive nature of MAS 90 and MAS 200, so all customers can take advantage of this powerful enhancement.

New Basis allocation method enables customers to distribute the allocation amount from the source account, based on values associated with the destination accounts.

Budgets

MAS 90 budgets have been significantly enhanced to meet your customers' complex budget needs. Budgets have been redesigned with a completely new data entry screen to accommodate the following new features:

- Maintain unlimited budgets – easy-to-use grid entry for budget maintenance.
- Only the budgets you want to work with will appear in budget maintenance.
- Ability to simultaneously edit budgets for multiple GL accounts.

Enhanced Integration with Bank Reconciliation

- **One-step bank transfer** – this top customer-requested enhancement enables you to transfer funds between banks as one step in transaction journal entry.

Transaction Journal Format

Source Journal JE General Journal

Header Defaults

Offset Account No. 101-01-00000-00000

Description Cash in bank - Reg. checking

Offset Credit

Transaction Total

Line Options

Transaction Type Bank Transfer

Auto Increment Check No. Adjustment
Bank Transfer
Check Number
Deposit
Document Reference

Bank Reconciliation Options

Post Deposits in Summary

Bank Code A Security Pacific Checking

Transfer Funds to Bank Code D Wells Fargo Checking

OK Cancel ?

Replacement Mini General Ledger

In 2001, the General Ledger became a required MAS 90 and MAS 200 purchase. While we have encouraged existing customers to purchase the General Ledger, we have not made it mandatory. Existing customers who do not own the General Ledger module will be shipped a limited GL at no charge that consists of:

- A new part number
- Special letter with a packing list explaining the limited GL. (Letter will consist of all required GL procedures that will be new to these customers.)
- No FRx Desktop
- No custom financials

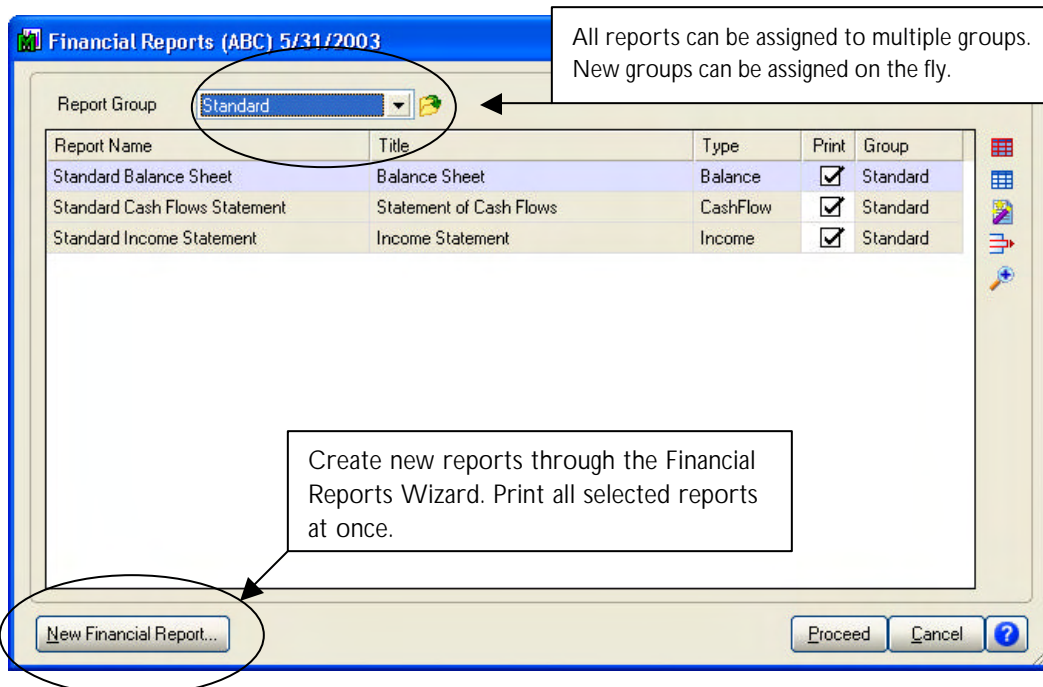
The limited GL will *only* be available for existing customers and will not be an option for new customers. No GL subscription renewal fees will be required for customers who are issued this limited GL.

Financial Reporting Compatibility

Financial Reporting is a key component to the success of any organization. The expansion of the GL account structure has brought two unique challenges. First, to have existing reports convert to the new General Ledger, no matter which report generator or combination thereof the customer is utilizing. Second, which report writer will be the standard moving forward? To address these needs, it is our goal to convert existing custom financial reports — as long as the user does not go beyond 9 characters or 3 segments. In addition, the standard financials will be significantly enhanced to meet broader financial reporting needs, along with FRx Desktop (bundled) and F9 (additional purchase), offered as alternatives for financial reporting.

Financials (formerly Standard Financials)

In a continuous effort to provide the highest level of customer satisfaction for both new and existing customers, we will implement a wizard-based front end to Financial Statements. Several usability enhancements will also be included with the financials, including Quarter-To-Date Income Statements and the ability to define segment or roll-up codes for Income Statements. In addition, the user can specify whether to print account numbers, dollar signs, zero balances and/or set a percentage mask. The following screenshots show where to get started to create or modify a Financial Report.



Formatting becomes a breeze with the Financial Reports Wizard:

Financial Reports Wizard (ABC) 5/31/2003

Number Format Options
You can specify how numbers will print on the financial reports.

Specify how amounts and percentages will be formatted on the report.

Amount Format Options

Decimal Places: 2 Decimal Separator: Period

Thousand Separator: Comma

Negative Values: Prefix

Rounding Factor: None

Currency Symbol: None

Percent Format Options

Decimal Places: 2

Percent Symbol: None

< Back Next > Cancel

Custom Financials

Custom Financials will be available to customers for use on a backwards compatibility basis and *only* if the GL account structure is not modified to be greater than the previous maximums of 9 characters and 3 segments. Custom Financial Statements will work with the new GL (as long as the account structure has not changed to beyond 9 characters and 3 segments) but will not be otherwise enhanced.

F9

F9 will continue to be offered as an optional purchase. The current goal is to have existing F9 reports convert to MAS 90 or MAS 200 version 4.0 as long as the GL account structure has not been changed to go beyond 3 segments and 9 characters.

FRx

FRx Desktop will continue to be bundled with the purchase of the General Ledger module and is to be used in place of the previously existing Custom Financials. The current goal is to have all FRx Desktop reports convert to MAS 90 or MAS 200 version 4.0 as long as the customer does not make any changes to the GL account structure.

Global Enhancements – All Modules

Business Insights Reporter

The complexity of creating Crystal Reports has long been one of the primary customer satisfaction issues with MAS 90. The Business Insights Reporter is a wizard-based interface to Crystal Reports that makes creating reports easier than ever. Customers will be guided through the selection of the data source, filter and sort criteria required to generate a report without having to understand the underlying data structures of MAS 90 or MAS 200. Crystal Reports will continue to be used as the printing and formatting engine at the end of the report creation process.

- Many pre-defined views of the data will be available (such as Accounts Receivable Invoice History and Sales Order Entry) and are presented in a logical tree view. The tree view makes it easier to locate data and removes the requirement to define relationships between multiple tables. Customers may also add to existing views or define their own custom views.
- Previously with Crystal Reports, the selection criteria were built into the report, requiring changes to the actual report (.RPT) to alter filtering or sorting criteria. With the 4.0 Business Insights Reporter, customers may define static as well as run-time selection criteria, enabling users to specify parameters each time the report is run, such as date range.
- Performance of many reports that require multiple joins will be significantly enhanced due to the new view technology, especially header/detail reports, such as those driven by Sales Order Entry tables.
- Power users that wish to continue to build reports as they do today will still be able to do so.
- Crystal Reports version 8.5 will continue to be included with MAS 90 and MAS 200 version 4.0.

Global Enhancements in GL for This Release

This release represents the future of the MAS 90 and MAS 200 product line. As such, it is the initial release for global enhancements that will be added to the other modules as they are rolled out into the new standards.

Saved Reports Settings

This global feature will allow customers to set up pre-defined report selection options for each report they have access to, thus decreasing the time to set up reports and potentially reducing report generation with incorrect selection criteria. Three different types of saved reports settings will be allowed, giving appropriate security for changing and saving new settings:

- **Public:** This will enable all users to modify and save a particular report setting.

The new saved reports settings feature can significantly reduce both errors and setup time when creating and running reports.

- **Read-Only:** Allows users to modify the saved setting and print the report with the new settings, but not save the modifications to the setting.
- **Private:** This setting will only show up for the user that created the saved setting.
- **Other saved settings** include default printer, number of copies to print, and account selection criteria.

Batch Manager

Batch Manager will be a standard feature of Library Master. While individual settings for batches (such as enabling or disabling batch entry and setting batch starting numbers) will still be maintained within the setup options for the individual modules, these settings will be stored in the company-wide batch management system files.

In the General Ledger module, batching will be added for both Transaction Journal Entry and General Journal Entry — allowing for greater control over General Ledger data entry.

Additional data for each batch will be maintained to record an accurate audit trail of each batch created, such as:

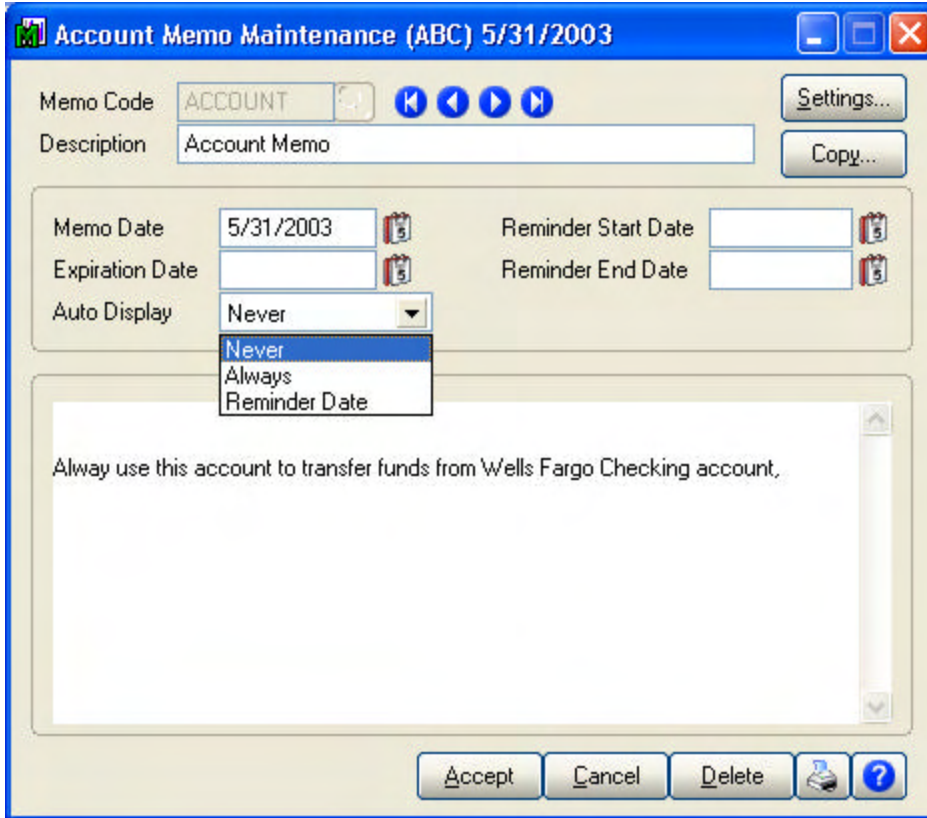
- User who created batch
- Date/time of batch creation
- User who last updated batch
- Date/time of last batch update
- Record count for batch

Memo Manager

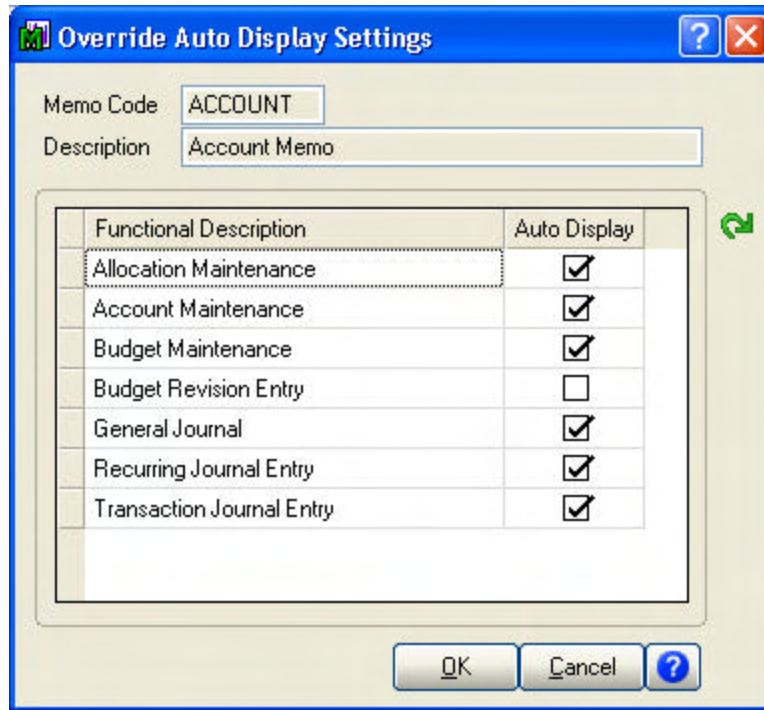
A company-wide memo management system will be introduced that will accommodate memos for all applications *as they are released in the new Level 4.0 standards*. This compliance will provide a standard interface for establishing, managing and displaying memos. In addition, several new features will provide additional flexibility. In this first phase, memos will be available in the General Ledger module for the first time.

The Memo Manager system will be a standard feature of Library Master. This will enable faster implementation of memos throughout MAS 90. Until Memo Manager becomes available for other modules, existing memo maintenance will be usable.

Below is an example of Memos in Account Maintenance. Notice memos can be set to auto display by reminder date:



In addition, you have more control over where memos are automatically displayed:



Security Enhancements

Roles-based security enhancements will greatly reduce the amount of work required to maintain security.

Version 4.0 will introduce roles-based security to MAS 90 and MAS 200. Roles-based security will offer customers the ability to define roles within their organization such as 'supervisor' or 'data entry.' One or more of these roles may be assigned to individual users. This method significantly reduces the amount of work required to maintain security, while offering greater flexibility in how it is implemented.

Version 4.0 standard modules (General Ledger and Library Master) will include new attributes that may be set for the various programs users need to access. For example, maintenance and data entry programs such as Account Maintenance and General Journal Entry have the attributes — Full Control, Create, Modify, Delete and View Only. These can be set for each program within a particular role, giving the administrator complete control over who can create, modify or delete entries. These attribute settings will be available for other modules in future releases.

Additional security enhancements:

- Customers may choose to use Windows authentication, which will be tightly integrated with MAS 90 and MAS 200 security.
- Special privileges, such as one-sided journal entries that were controlled by the 'supervisor' setting, are now individual security events that may be enabled for individual roles (in Level 4.0 modules only).

Security will be task-based, not menu-based, allowing it to be maintained regardless of how various tasks are executed.

Personalization

Users will have the ability to personalize their experience by having the following settings remembered by the system (General Ledger module only):

- Window position and size
- Grid settings, including column sizes and column order
- User-specified tab sequences

ALE Enhancements

The advanced lookup engine (ALE) will have the ability to export directly to Microsoft Excel. The entire contents of the currently selected listing can be sent to an Excel spreadsheet with the click of a button. These features allow customers to quickly and easily populate Excel spreadsheets with the data from their MAS 90 or MAS 200 application.

Integration and Technology

In addition to a powerful new General Ledger module and the Business Insights Reporter, this version of MAS 90 and MAS 200 includes a number of significant Library Master and technology enhancements.

Customizer Enhancements

The Customizer enhancements outlined here relate only to General Ledger and serve as the model for what will come in future releases. Current Customizer capabilities, including the Windows scripting, will continue to function with non-GL modules. Unless otherwise specified, current Customizer capabilities will also continue to function with GL:

- **User-Defined Fields (UDFs)** – Customers may define UDFs for any table and are not limited to single pre-defined entities.
 - UDFs will reside in the actual data table (GL Account Master, for example), not in a separate UDF table.
 - The source of the value of a UDF may be defined when the UDF is created, allowing the user to specify default values or the source from which a UDF value is inherited. For example, if you create a UDF in GL Account Maintenance and create a second UDF for Transaction Journal Entry Lines, you can then specify that the value of the Transaction Journal Entry UDF is populated with the value from the GL Account Maintenance UDF.
- **User-Defined Tables (UDTs)** – Tables may be defined to validate UDFs or some existing fields.
 - A grid data entry program will be generated for maintenance of the user-defined tables.

- Users may include information from UDTs on Crystal Reports and forms.

External Integration

General Ledger business objects may be accessed externally through a new set of standard interfaces. This will offer the ability to perform tight integrations with other applications, without modifying the underlying source code of the application. (This feature will be available as an add-on for an additional fee.)

- Access to all General Ledger data entry and maintenance business objects is available. All relevant functions of the business object are exposed, including adding, deleting and modifying entries.
- Application security is maintained even when interfacing with the business object from an external source.
- Programmers may use their language of choice, Visual Basic for example, to interface with the business objects.

Wide Area Network Support

Version 4.0 for MAS 200 will include the following enhancements for wide area network (WAN) deployment:

- Compatibility with firewalls that use Network Address Translation (NAT).
- Traffic between the client and host may be optionally SSL encrypted to help ensure data security.
- Client/server connections will be enhanced to be more fault tolerant, resulting in fewer dropped connections.

Compatibility and Considerations

Import Master and Report Master

Import Master and Report Master will remain compatible with all modules except General Ledger. Existing jobs that display or import a GL account number will need to be recompiled.

Visual Integrator

- Visual Integrator will be compatible with all modules.
- Jobs that import to or export from General Ledger should see a significant performance increase.

Master Console and Auto Update

- Master Console will continue to function as it does today, but the chat function is being retired.

- Auto Update will not function in General Ledger with the initial release of version 4.0, but will continue to function in all other modules. This feature will be available in General Ledger in a subsequent release.

Visual Postmaster and Microsoft Office Link

- These will not integrate with General Ledger in the initial 4.0 release, but will continue to function with all other modules. However, they will be available in General Ledger in a subsequent release.

Payroll Direct Deposit Update

- The Payroll Direct Deposit enhancement has been moved from the 4.0 release into a future release. Details will be released at a later date.

Availability

MAS 90 and MAS 200 Level 4.0 is scheduled for release in late fall 2003. To provide this release to the majority of customers on a timely basis, MAS 200 for SQL Server Level 4.0 will not be available concurrently. The optimal date for the next release of MAS 200 for SQL Server is still being determined.



**National Presence
Local Touch**

Sage Software Business Partner of the Year

Corporate Offices

Orange County, California

23161 Mill Creek Drive
Laguna Hills, California 92653
Phone: (949) 583.9500
Toll Free: (800) 425.9843
Fax: (949) 583.0649

www.blytheco.com

Atlanta, Georgia

1100 Johnson Ferry Road, Ste. 450
Atlanta, Georgia 30342
Phone: (404) 841.6240
Toll Free: (800) 455.1368
Fax: (404) 841.6243

solutions@blytheco.com

Complete Sage Software Solutions

Sage MAS 500 ◊ Sage MAS 200 ◊ Sage MAS 90
Sage BusinessWorks ◊ Sage SalesLogix CRM ◊ ACTI by Sage
Sage ABRA HRMS ◊ Sage FAS ◊ Sage MIP Fund Accounting & Fundraising

Offices in these cities & states:

Atlanta, GA ◊ Chicago, IL ◊ Los Angeles, CA ◊ Orange County, CA ◊ Tampa, FL
Colorado ◊ Missouri ◊ New Jersey ◊ Ohio ◊ Oklahoma ◊ Pennsylvania ◊ Tennessee
Texas ◊ Washington

MAS 90 MAS 200

23161 Mill Creek Dr.
Laguna Hills, CA 92653
(949) 583-9500
www.blytheco.com

The information contained in this document represents the current view of Best Software, Inc. on the issues discussed as of the date this document was prepared. Because Best Software must respond to changing market conditions, it should not be interpreted to be a commitment on the part of Best, and Best cannot guarantee the accuracy of any information presented after the date of publication. This document is for informational purposes only. BEST SOFTWARE MAKES NO WARRANTIES, EXPRESSED OR IMPLIED, IN THIS DOCUMENT. © 2003 Best Software, Inc. All rights reserved. Reproduction in whole or in part without permission is prohibited. The capabilities, system requirements and/or compatibility with third-party products described herein are subject to change without notice. Contact Best Software for current information. Always consult a network specialist to discuss the security risks involved before implementing any Internet solution. Best Software, Inc. is not responsible for the content or maintenance of the Web sites referred to herein. Best Software does not warrant the information contained within this document.