

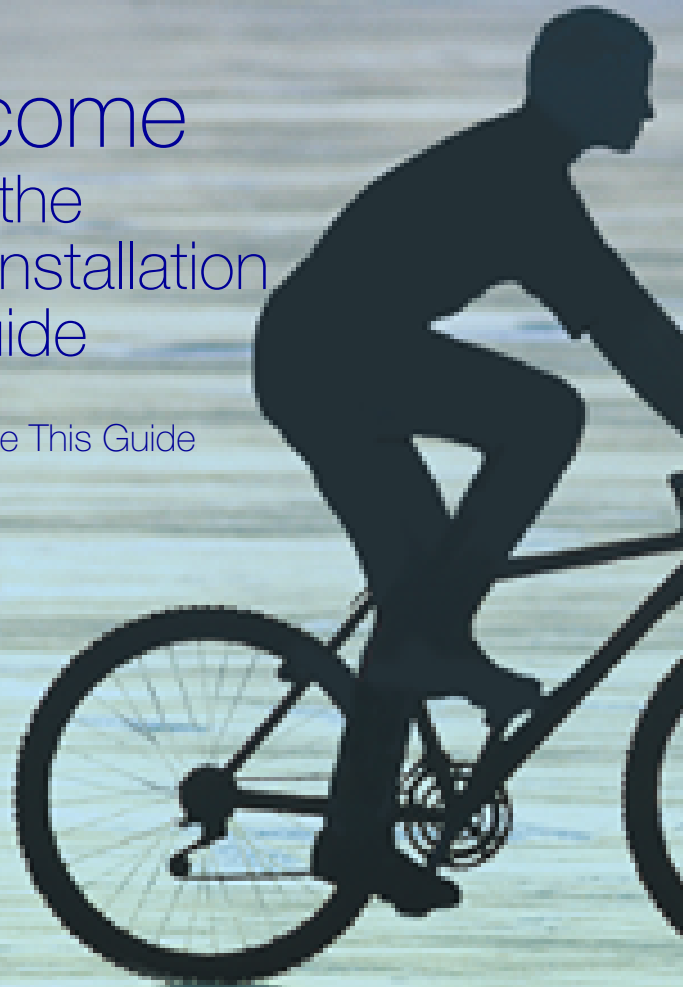
Welcome to the MAS 90 Installation Guide

[How to Use This Guide](#)

[Contents](#)

[Index](#)

[Modules](#)



How to Use This Guide



Go to the [How to Use This Guide](#) page (this page).



Go to the Contents.



Go to the previous page.



Go to the next page.



Go back to the previous link.




Go to the Index.



Go to the Modules page.

...Text on page... Indicates a jump to a topic.

 Bookmarks appear in the overview window to the left of the document window. These bookmarks are similar to a table of contents.

Note: The Installation Guides and User Manuals CD-ROM is best viewed using Acrobat Reader 4.0. For best printing results, print to a PostScript printer.

Copyright © 1998 - 2002 Best Software, Inc. All rights reserved.



The Premier Sage Software Business Partner

Corporate Offices

Orange County, California
23161 Mill Creek Drive
Laguna Hills, California 92653
Phone: (949) 583.9500
Toll Free: (800) 425.9843
Fax: (949) 583.0649

www.blytheco.com

Atlanta, Georgia
1100 Johnson Ferry Road, Ste. 450
Atlanta, Georgia 30342
Phone: (404) 841.6240
Toll Free: (800) 455.1368
Fax: (404) 841.6243

solutions@blytheco.com

Sage Software Business Partner of the Year

Complete Sage Software Solutions

Sage MAS 500 • Sage MAS 200 • Sage MAS 90
Sage BusinessWorks • Sage SalesLogix CRM • ACT! by Sage
Sage ABRA HRMS • Sage FAS • Sage MIP Fund Accounting & Fundraising

Offices in these cities & states:

Atlanta, GA • Chicago, IL • Los Angeles, CA • Orange County, CA • Tampa, FL
Colorado • Missouri • New Jersey • Ohio • Oklahoma • Pennsylvania • Tennessee
Texas • Washington

National Presence - Local Touch

Contents

Chapter 1 — Introduction 6

How to Use This Manual 6

Graphic Conventions 6

Text Conventions 7

MAS 90 Installation Checklists 8

Installation and Conversion Checklist 8

Printer Configuration Checklist 11

Workstation Setup Checklist 12

Chapter 2 — Getting Started 13

Overview of System Startup 13

Installing in the Windows Environment 13

Installation of System Setup 14

Installation Options 16

Running the MAS 90 Setup Program 17

Workstation Setup 21

Running Workstation Setup 22

Microsoft Internet Explorer 25

Installing Internet Explorer 25

Microsoft Data Access Components (MDAC) 27

Installing MDAC 27

Installing DCOM 29

MAS 90 Workstation Identification and Session Tracking 29

Assigning a Workstation ID 30

Overriding the FIDO Value 31

Starting MAS 90 for the First Time 31

Chapter 3 — Installing Crystal Reports 32

Crystal Reports Overview 32

Installing the Design Environment 32

Installing Crystal Reports to the Workstation 33



Chapter 4 — Installing the PCCharge Payment Server 36

PCCharge Payment Server 36

Installing the Payment Server 36

Accessing the Payment Server Manual 39

Support and Upgrades 40

Chapter 5 — Installing Onto a Single User System 41

Windows 98/Me 41

Windows NT/2000/XP Workstation 41

Printer Setup 41

Chapter 6 — Installing Onto a Novell NetWare 3 Network 42

Setup and Configuration 42

NetWare Rights 42

Configuring Captured Printers in Device Configurator 43

Configuring Local Printers in Device Configurator 44

Defining Local Printers for a Workstation 44

Troubleshooting 45

Novell NetWare Networks 45

Checklists 46

Determining Hard Disk Space 46

Windows 98/Me Workstations 47

Chapter 7 — Installing Onto a Novell NetWare 4 or 5 Network 49

Setup and Configuration 49

Windows 98/Me Workstations 50

Chapter 8 — Installing Onto a Windows NT/2000 Server Network 52

Setup Procedures 52

Networking Procedures 53

Windows 98/Me 53

Setting Up Networking 53

Logging Onto a Domain 55

Printer Setup 56

Printing Procedures 56

Drive Mappings 57

Checklists 58

Windows 98/Me Workstations (Workstation Checklist) 58

Windows NT/2000/XP (Workstation Checklist) 59

Chapter 9 — Installing Onto a Windows Peer-to-Peer Network 61

Setup Procedures 61

Networking Procedures 61

Establishing Network Connections 62

MAS 90 Workstation Setup 63

Printing Procedures 64

Changing Printer Settings 65

Checklists 66

Windows 98/Me (Server Checklist) 66

Windows 98/Me (Workstation Checklist) 67

Chapter 10 — Installing Onto a Windows NT/2000/XP Peer-to-Peer Network 69

Drive Mappings 69

Checklists 70

Windows NT/2000/XP Workstation (Server Checklist) 70

Windows NT/2000/XP Workstations (Workstation Checklist) 71

Appendix A — Converting MAS 90 Crystal Reports from a Prior Version 73



Introduction

How to Use This Manual

This manual provides the information necessary for installing MAS 90. This manual also contains information and troubleshooting tips on the configuration of the various operating systems and environments in which the MAS 90 software is supported. It is designed to function as a self-teaching guide. The instructions contain detailed technical information on the configuration of operating systems and environments.

Chapters six through ten each represent a specific type of operating system platform onto which you might install the MAS 90 software. Read Chapters 1, and 2, and the applicable chapter covering the platform on which you plan to install the MAS 90 software thoroughly before beginning the installation process. For a complete listing of operating system requirements, see the Supported Platform Matrix which can be found on the Best Software Web site (www.bestsoftware.com).

Graphic Conventions

The following icons are used throughout this manual to indicate different types of information.



The **Note** symbol is followed by additional information about a topic.



The **Helpful Hint** symbol is located in a grey text box and followed by additional information about an option.



The **Warning** symbol is followed by information to help you avoid costly mistakes.

Text Conventions

The following table describes the text conventions used in all manuals.

Text Convention	Explanation
Field font	<p>Indicates a field name, list box name, options in a list, column name, or check box.</p> <p>Example: The Modes button is available only if Windows Printer Port or Physical Device is selected at the Device Type field.</p>
<i>Italic font</i>	<p>Indicates directory names or references to other manuals.</p> <p>Example: For more information about setting up and processing sales tax, refer to your <i>Accounts Receivable</i> or <i>Accounts Payable</i> manual.</p>



MAS 90 Installation Checklists

Before beginning the installation, test and validate all the hardware and network configurations using this manual and the Supported Platform Matrix, which can be found on the Best Software Web site. Also review the current support library for any pertinent information, particularly the Hot Pre-Installation Issues page on the Best Software Web site (www.bestsoftware.com).

Note

For specific support on your hardware or operating system, contact the vendor from whom you purchased the product.

Use the following checklists for step-by-step instruction for all operating system configurations on which the MAS 90 software is supported, to ensure that the network is configured properly before beginning the installation. For more information, see the applicable chapter representing the specific type of installation to be performed.

Installation and Conversion Checklist

1. Verify that the CD-ROM is for the current levels for all the modules that you plan to install. For a listing of the current levels, refer to the Best Software Web site.
2. Verify that the packing list is available. The packing list contains serial number and unlocking key information that is required to activate the interpreter for the correct number of users and to register the modules. If you do not enter the unlocking key and perform system activation, you can only run in single-user mode. If you do not enter the unlocking keys for the modules, you can access the module 40 times before you are locked out.
3. If you are upgrading from a previous level of MAS 90 software (Level 1.x or 2.x), you must determine whether to perform an in-place or parallel upgrade. Best Software recommends that you perform a parallel upgrade. In the event of data corruption, a parallel upgrade makes it easier and safer to recover and repair data. This also allows previous and new MAS 90 programs to run simultaneously for verification. A good, verified backup of the system is still required for either upgrade method. An in-place upgrade is irreversible. Verify a backup of the MAS 90 system and data files is available should the need arise to retrieve this data.

Note

For specific support on operating system commands such as BACKUP, consult your operating system manuals or contact the vendor from whom you purchased that product.

Chapter 1 Introduction

If you are upgrading from a previous level of MAS 90 software (Level 3.x), an in-place upgrade must be performed.

4. Verify that all data entry files have been updated and are empty before upgrading. Any data in the data entry files during the upgrade will be lost. Print all customized form definitions and the System Activity Log. Default forms may be erased in the upgrade process.
5. Check permissions on the root directory of the drive to which you are installing. The root directory and the directory hierarchy where MAS 90 is installed should have all available permissions set. The user installing MAS 90 must have the highest-level user account for that particular operating system (for example, supervisor or administrator).

Note

Before installing MAS 90, review the chapters pertaining to the operating system being installed.

6. Install the software. MAS 90 is installed using autorun.exe if you are installing to a network.

If you are installing System Setup over a previous installation of MAS 90, a dialog box appears indicating that a previous installation of MAS 90 has been detected. Click OK only if you intend to perform an in-place upgrade. If you intend to perform a parallel upgrade, click Cancel and enter a new path to which you want to install MAS 90. A parallel upgrade can be used when upgrading from MAS 90 Level 1.x or 2.x.

7. Start MAS 90 by double-clicking the shortcut or program item.
8. If you install over an existing installation of MAS 90 Level 1.x or 2.x, the in-place upgrade process begins. You are prompted to confirm whether or not a verified backup exists and you have the option to exit. After this process starts, it cannot be reversed. If you are upgrading from a previous version of Level 3, the System File Conversion process (Post Installation Merge) will begin automatically. You will not receive any prompts until the process is completed.



Chapter 1 Introduction

Warning

This is the only time that you are prompted to convert system files and start a parallel upgrade. Click Yes in the dialog box to begin the conversion process.

- 9_____ If you did not install over an existing installation of MAS 90 (parallel upgrade), when you start MAS 90, a dialog box appears prompting you to convert system files. System files include the Forms file, Advanced Lookup Engine (ALE), System Control file, Security file, Report Master Definition file, Payroll Tax Table files, PostMaster Definition file, and the Time and Billing formats. All reports generated in Report Master, Import Master, and PostMaster in previous levels of MAS 90 must be recompiled before they can be used. If you do not have a previous level of MAS 90 (Level 1.x or 2.x) installed or do not want to convert system files from a previous level, click No in the Do you want to convert MAS 90 System files from another directory? dialog box. If there is an existing installation of MAS 90 Level 1.x or 2.x software that needs to be converted, click Yes. You are then prompted for a directory from which to convert. Enter the path to the directory from which you want to convert. Include the drive letter and the full path, which should end with *MAS90*.

Note

A parallel upgrade is only for MAS 90 Level 1.x or 2.x data files.

- 10_____ After system files are converted, the post-installation merge begins. This process can take anywhere from a few minutes to an hour, based on the number of modules installed and the hardware configuration. If this is a new installation, you are ready to use MAS 90 software and can proceed to [Printer Configuration Checklist](#).

Note

Printers are only converted if you chose to convert system files, or if you are performing an in-place upgrade.

- 11_____ If upgrading from a prior level of MAS 90 Level 1.x or 2.x, the CONFIG.BBX and/or CONFIGW.BBX files are converted. These files contained printer and other device-related information associated with the device configurator; CONFIG.BBX contained the device configurator information for DOS installations and CONFIGW.BBX contained the device configuration information for Windows installations of MAS 90 Level 2.x. If either CONFIG.BBX or CONFIGW.BBX exists, it is converted to MAS90.INI. If both files exist, the CONFIGW.BBX is converted to MAS90.INI and CONFIG.BBX is converted to MAS90D.INI. To retain and utilize the device configurator information that was in CONFIG.BBX, you must reenter the relevant information from MAS90D.INI to MAS90.INI using Library Master Device Configurator.

Chapter 1 Introduction

- 12____ If you are installing over a previous in-place version of MAS 90 Level 1.x or 2.x, the program now begins converting module data files from the BB^x format to the ProvideX format.
- 13____ If this is an upgrade from an existing installation that has company codes defined, see Company Maintenance in your Library Master manual.
- 14____ Access the Library Master module. In the Library Master Company Maintenance window, click Convert.
- 15____ The data files are now set up and ready for processing. You can now access data files using the maintenance programs. Proceed to Printer Configuration Checklist on this page before attempting to process data. If you have Report Master, Import Master, PostMaster, or Time and Billing customized billing formats, proceed to the next step.
- 16____ Recompile your Report Master, Import Master, PostMaster, or Time and Billing customized billing formats by accessing the respective maintenance program. Select each report and recompile it by typing a tilde (~) at the maintenance menu. Repeat this process for each report.

Note

You must press SHIFT to type a tilde (~).

Printer Configuration Checklist

Note

Printer conversion only converts the LP device and any device starting with "P." Other devices are ignored.

Before you can print from MAS 90, your printers must be properly configured, either in the Windows Print Manager or using Library Master Device Configurator. A DOS printer refers to a printer that is configured using Library Master Device Configurator, including devices with device names of LPTx, *WINDEV*, and *WINPRT*. A Windows printer refers to a printer that is configured through Windows Print Manager.

If a previous version of MAS 90 software was installed, all printers configured there are converted to DOS printers in MAS 90. For more information, see Device Configurator in your *Library Master* manual.

- 1____ Start MAS 90, and then on the Library Master Utilities menu, click Device Configurator.



Chapter 1 Introduction

- 2_____ During the conversion process (from MAS 90 Level 1.x or 2.x), the CONFIGW.BBX and CONFIG.BBX files are converted to MAS90.INI and MAS90D.INI, respectively. If only the CONFIG.BBX file exists, it is converted to MAS90.INI. Only the MAS90.INI file is used by MAS 90. Printers defined in CONFIGW.BBX but not in CONFIG.BBX, or vice-versa, must be re-created in Library Master Device Configurator after MAS 90 starts. If there are more printers defined in CONFIG.BBX than in CONFIGW.BBX, rename the MAS90D.INI file to MAS90.INI.
- 3_____ In Library Master Device Configurator, bring up each printer listed. This creates the link file for this printer. For information on setting up additional printers, refer to your *Library Master* manual. Add any necessary printers that do not currently appear in the printer list.

Workstation Setup Checklist

Before any workstation other than the one from which you installed can run MAS 90, the Workstation Setup program, `autorun.exe`, must be executed from each individual workstation.

Note

You must run WKSETUP from each workstation every time you install a new system setup.

- 1_____ On the individual workstations, run the `autorun.exe` program. The `autorun.exe` program is located in the `F:\MAS90\WKSETUP\` directory (where `F:` represents the drive on which MAS 90 is installed). From Windows Explorer, select this directory and double-click the `autorun.exe` program.

Note

The workstation must be able to see the MAS90 directory. Do not share this directory; instead, share the drive or parent directory above MAS90.

- 2_____ Verify that your computer name is unique. No other computer accessing MAS 90 can have the same computer name. You do not need to set the PVXFID0 value in your AUTOEXEC.BAT file, unless you must duplicate computer names. For more information, [see *Overriding the FID0 Value*](#).

Chapter 2

Getting Started

Overview of System Startup

Before you can install MAS 90 System Setup, Library Master, and any of the MAS 90 modules, your hardware must be properly configured, and the appropriate operating system software must be fully installed and operational. In addition, you should also calculate the total disk storage requirements for each module to be installed. If you are installing over an existing installation of MAS 90 EVOLUTION/2, see *Converting EVOLUTION/2 Data Files* in your *Library Master* manual for additional requirements and procedures.

Installing in the Windows Environment

Note

MAS 90 is a 32 bit application. Windows 3.1x workstations must be upgraded to run MAS 90.

The following installation procedures address the Windows[®] environments. For information on the specific operating system requirements, see the Supported Platform Matrix on the Best Software Web site.

After you have verified the compatibility of your hardware and operating system software, you must verify the available hard disk storage space before proceeding with the installation process. To do this, calculate the total disk storage requirements for each module to be installed. This calculation ensures that your hard disk contains adequate space to accommodate your processing requirements. System Setup and Library Master require approximately 150 MB of hard disk space. Each module occupies approximately 15 to 25 MB of hard disk space.

The installation and setup process consists of the following steps.

- 1 Install MAS 90 System Setup, Library Master, and any other MAS 90 modules. For more information, *see Installation of System Setup.*
- 2 Install Crystal Reports (this is optional).
- 3 Start MAS 90 and enter today's date as the "accounting date."
- 4 Activate the interpreter and register all modules.

Note

If you do not to install Crystal Reports, you cannot create new reports or modify existing reports and forms.

Chapter 2 Getting Started

- 5 Set up your company and activate the application files for your company. For more information, see Performing System Startup Tasks in your *Getting Started Guide*.

Read this installation guide, the *Getting Started Guide*, and all module manuals completely before setting up MAS 90. Each module has an options setup window that allows you to customize MAS 90 for your specific needs. Taking the time to understand all the options available before you install and set up your modules allows you to use your accounting software to its fullest potential.

After completing these procedures, your system is ready for normal processing activities. These routine activities are described in detail in the menu chapters of each MAS 90 manual.

Installation of System Setup

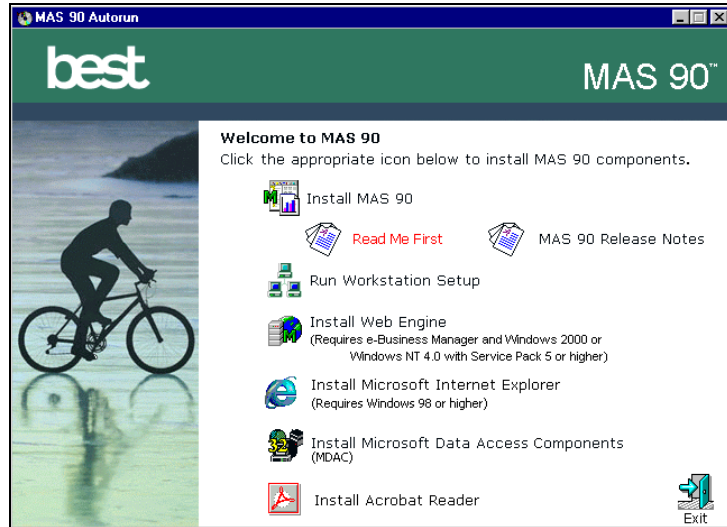
To install System Setup

- 1 Start Windows; if you are installing MAS 90 to a server, map a drive letter to that server or install at the server.
- 2 Close all other programs.
- 3 Place the MAS 90 CD-ROM in the CD-ROM drive of the workstation or server to which you are installing MAS 90.



Chapter 2 Getting Started

- 4 If Autorun is enabled on the workstation, the MAS 90 Autorun window appears; otherwise, on the Start menu, click Run and type **D:\AUTORUN.EXE**, where **D:** is the CD-ROM drive.



Chapter 2 Getting Started

Installation Options

There are several options available on the Autorun window for installing MAS 90 components.

- **Install MAS 90:** Click this option to install the MAS 90 Setup program. This option is required.
- **Read Me First:** Click this option to read the Read Me First document for MAS 90.
- **MAS 90 Release Notes:** Click this option to read the release notes for MAS 90.
- **Run Workstation Setup:** Click this option to install the Workstation Setup program to local workstations. This option is required for all workstations.
- **Install Web Engine:** Click this option to install the Web Engine. This option requires the e-Business Manager module. For operating system requirements, see the Supported Platform Matrix on the Best Software Web site.
- **Install Microsoft Internet Explorer:** Click this option to install Microsoft Internet Explorer.
- **Install Microsoft Data Access Components (MDAC):** Click this option to install Microsoft's ODBC drivers.
- **Install Acrobat Reader:** Click this option to install Adobe's Acrobat Reader. Acrobat Reader is required to view the online manuals.

Note

For information on installing the Web Engine, refer to your *e-Business Manager Installation Guide*.



Chapter 2 Getting Started

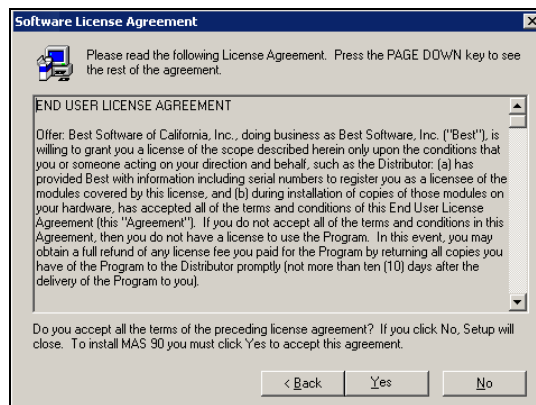
Running the MAS 90 Setup Program

To run the MAS 90 Setup program

- 1 On the MAS 90 Autorun screen, click Install MAS 90. The Setup program may take a few seconds to launch.
- 2 Click Next.

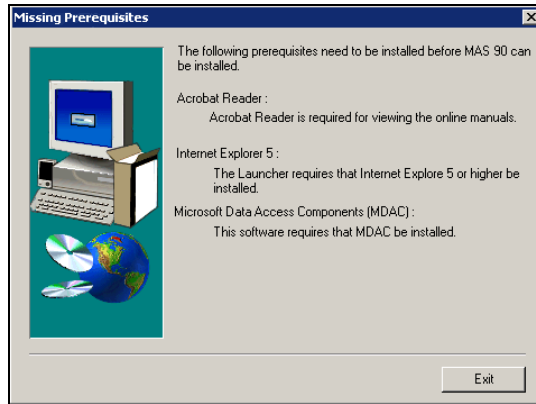


- 3 Click Yes to accept the terms of the license agreement. You must accept the agreement to continue with the installation. Click No to stop the installation process.



Chapter 2 Getting Started

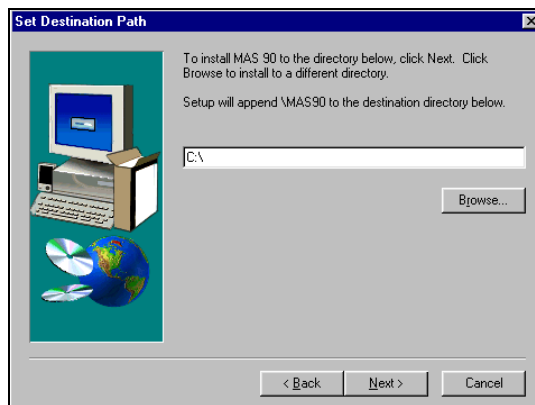
- The Setup program determines if Acrobat Reader, Internet Explorer, and the Microsoft Data Access Components (MDAC) are installed. If these prerequisites are not installed, the Missing Prerequisites dialog box appears. Clicking Exit in the Missing Prerequisites dialog box returns you to the Autorun screen, where you can install the needed prerequisites.



Note

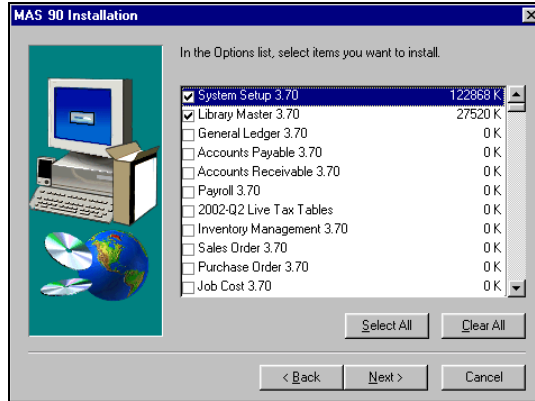
Do not nest a destination directory in directories named MAS90 or SOA.

- The Setup program requires you to specify where to install MAS 90. Click Browse to view a listing of all drives and directories available on the server. You are prompted to create the path if the path you enter does not exist. Click Yes to proceed or No to select a new path.



Chapter 2 Getting Started

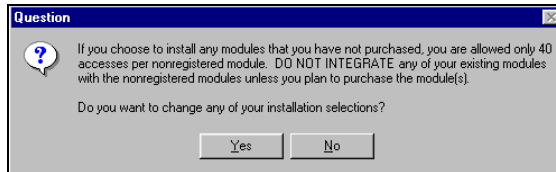
- 6 Select the modules to install. Click Select All to select all the modules, including demonstration data. Click Clear All to clear all the check boxes. Click Next to proceed.



Warning

Do not integrate your existing modules with nonregistered modules unless you plan to purchase

- 7 You can install modules that you have not purchased; however, you are required to purchase and unlock these modules after 40 free accesses. Click Yes to change any of your installation selections. Click No to continue with the installation process.

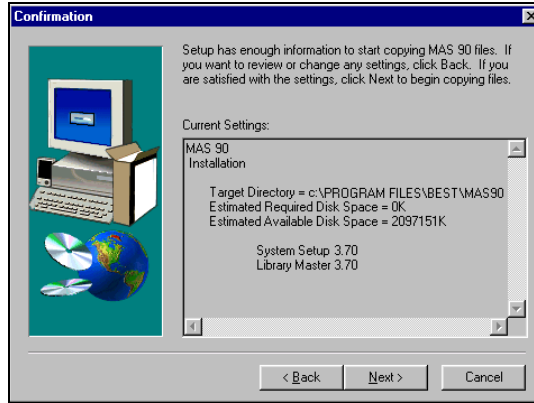


Chapter 2 Getting Started

Note

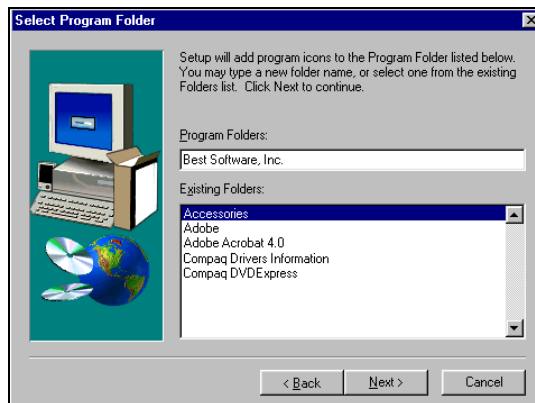
If you do not have enough disk space, a warning appears after you click Next.

- 8 Click Next to begin the installation, or click Back to change your options.



The Setup program verifies that no other programs are running that may be using programs to be installed by the Setup program. If you receive a message (after clicking Next in the Confirmation dialog box) stating that Setup cannot copy programs because they are currently in use, close all programs and select the **Continue** option, and then click Next. To exit the Setup program, select the **Exit** option, and click Next.

- 9 A program group and icon are established in the Start menu to run MAS 90.



Chapter 2 Getting Started

If you receive a message (after clicking Next in the Confirmation dialog box) stating that Setup was unable to detect an installation of Adobe Acrobat Reader, click OK to return to the Autorun screen to install Acrobat Reader. Acrobat Reader is needed to view the online manuals.

- 10 Read the ReadMe file before using the MAS 90 software.



Workstation Setup

Note

Best Software does not support running MAS 90 through a shared network installation of Windows.

The Workstation Setup program is used specifically for Windows workstations attached to a Novell or Windows network. This program must be run in order to use MAS 90 software on any workstation. The workstation from which the MAS 90 software was originally installed does not need to run this Setup. The Workstation Setup program copies all the necessary Dynamic Link Libraries and programs to the *Windows\System* directory and also sets up the initialization files for this particular workstation.

For workstation operating system requirements, see the Supported Platform Matrix on the Best Software Web site.

Chapter 2 Getting Started

Running Workstation Setup

Warning

The Workstation Setup program will not run properly if it is not executed from a drive letter. A physical drive letter does not exist if you run the Workstation Setup program through Network Neighborhood.

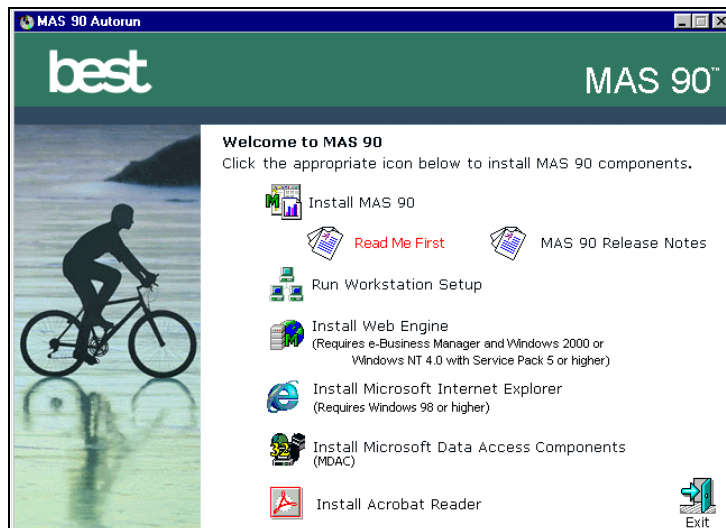
Note

Run the Workstation Setup program after every MAS 90 software upgrade.

The Workstation Setup program can be run from the CD-ROM or from an installation of MAS 90.

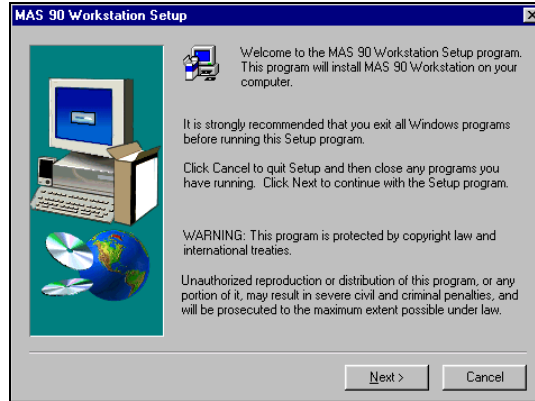
To run Workstation Setup

- 1 Close all other programs before beginning the installation process.
- 2 To begin the installation process from the CD-ROM, map a drive letter to the server on which MAS 90 is installed. Place the MAS 90 CD-ROM in the CD-ROM drive of your workstation.
- 3 If Autorun is enabled on the workstation, the MAS 90 Autorun window appears; otherwise, click Run on the Start menu, and type **D:\AUTORUN.EXE**, where **D:** is the CD-ROM drive. Click Run Workstation Setup to begin the installation. The Workstation Setup program takes a few seconds to launch. If you are running Workstation Setup from the server, map a drive to the *MAS90 directory*. In the *MAS90\WKSETUP directory*, double-click AUTORUN.EXE to begin the installation.

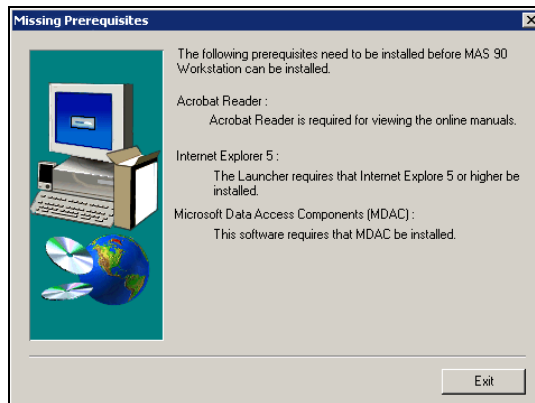


Chapter 2 Getting Started

- 4 Click Next to proceed with the installation. Click Cancel to close the Workstation Setup program.

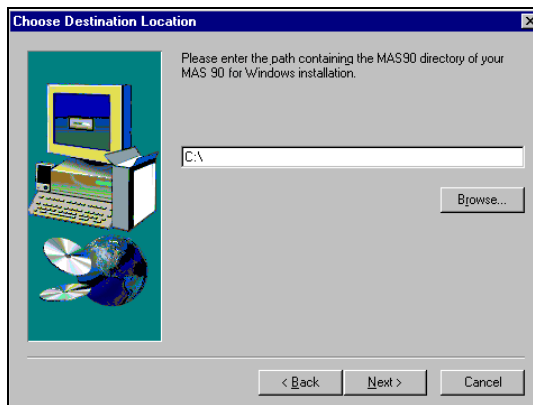


- 5 Workstation Setup determines if Acrobat Reader, Internet Explorer, and the Microsoft Data Access Components (MDAC) are installed. If these prerequisites are not installed, the Missing Prerequisites dialog box appears. Clicking Exit in the Missing Prerequisites dialog box returns you to the Autorun screen, where you can install the needed prerequisites.

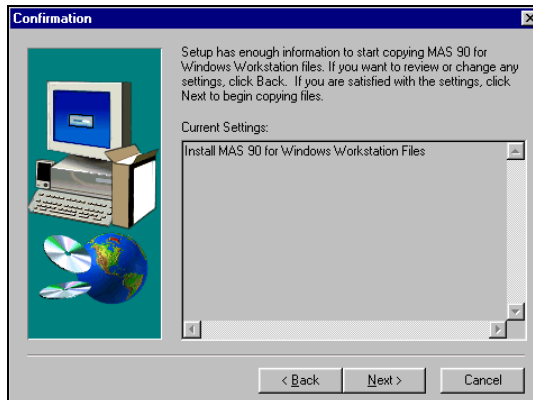


Chapter 2 Getting Started

- 6 Run Workstation Setup if Microsoft Data Access Components (MDAC) is installed on the workstation. If it is not, a dialog box appears indicating that MDAC is not found. Run the MDAC installation program and then re-run Workstation Setup.
- 7 If you are running Workstation Setup from the CD-ROM, type the path to your MAS 90 installation (this path is used only to create the MAS 90 icon, not for copying files from the MAS 90 installation). If you are running from a network, this window does not appear.



- 8 Click Next to accept the installation settings and begin the installation. Click Back to change the settings.



Chapter 2 Getting Started

If you receive a message (after clicking Next in the Confirmation dialog box) stating that Setup was unable to detect an installation of Adobe Acrobat Reader, click OK to return to the Autorun screen to install Adobe Acrobat Reader. Acrobat Reader is needed to view the online manuals.

After the Workstation Setup program has copied the necessary files to your workstation, a program group is created and an icon is added to the Start menu to run MAS 90.

Microsoft Internet Explorer

Microsoft Internet Explorer is a powerful HTML viewer that is used throughout MAS 90 to enhance the product. Business Insights generates templates and customized pages of data with graphs and charts that can be displayed through Internet Explorer. Web Services within MAS 90 link directly with Internet Explorer and the Internet allowing you to track packages, get map directions or visit the Best Software Web site. In addition, you can link directly to your customer or vendor Web sites within MAS 90. The Crystal Reports Web Service also requires Internet Explorer. Microsoft Internet Explorer is provided as a convenience on the MAS 90 CD-ROM so that you do not have to download the content from an FTP site over the Internet (which can take several hours over a dial-up connection).

Note

Netscape Navigator does not currently support ActiveX controls.

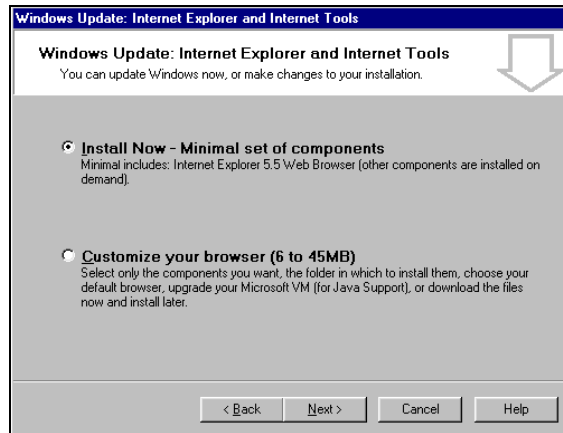
Installing Internet Explorer

To install Internet Explorer

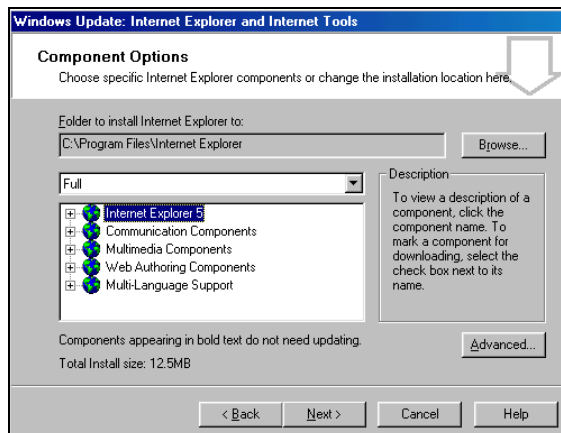
- 1 On the MAS 90 Autorun screen, click Install Microsoft Internet Explorer.
- 2 Because Internet Explorer launches its own setup routine, the Workstation Setup components will install first and will then start the Internet Explorer setup program.
- 3 When prompted, accept the Licensing Agreement with Microsoft to use Internet Explorer.

Chapter 2 Getting Started

- 4 For most users, selecting the **Install Now** option is sufficient. This option installs all the core components of Internet Explorer and other Internet tools. The **Customize your browser** option is available for advanced users who want to install specific or additional components not included in the default installation option. Select an option and click Next.



- 5 If you selected the **Customize your browser** option, the following dialog box appears.



Chapter 2 Getting Started

The drop-down list box allows you to select one of three preconfigured options: **Minimum**, **Typical** and **Full**. You can then select or clear options from the tree view depending on what you want installed on your workstation. Installing everything requires approximately 50 MB of hard drive space. Only the browser component is required for MAS 90 operation. Click Next

- 6 After installing Internet Explorer, you may be required to reboot your workstation.

Microsoft Data Access Components (MDAC)

Microsoft Data Access Components (MDAC) provides the connectivity layer between databases and applications. All third-party applications that use ODBC to connect to MAS 90 data sources must have MDAC installed. For information on system requirements, see the Supported Platform Matrix on the Best Software Web site.

Installing MDAC

To install MDAC

- 1 Place the MAS 90 CD-ROM in the CD-ROM drive of the workstation from which you are installing. If Autorun is enabled on the workstation, the MAS 90 Autorun window appears; otherwise, on the Start menu, click Run and type **D:\AUTORUN.EXE**, where **D:** is the CD-ROM drive.
- 2 Click Install Microsoft Data Access Components.
- 3 If you attempt to install MDAC from the MAS 90 Autorun screen, but you do not have the required version installed, an error message dialog box appears.

Only operating systems prior to and including Windows 98 may require DCOM to be installed before installing MDAC (recent operating systems include MDAC).

The Data Access Components may not be able to install programs that are open and possibly using some of the components that the Data Access Pack will overwrite. Close all external programs before running the Data Access Pack installation.

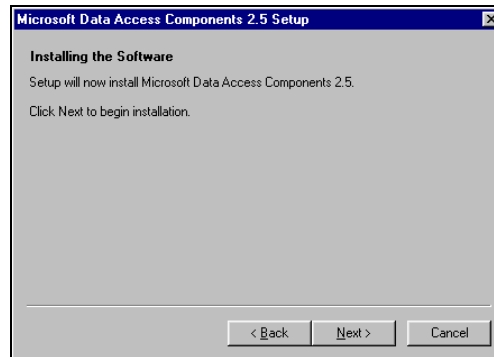


Chapter 2 Getting Started

- 4 Select the check box to accept the terms of the license agreement, then click Next.



- 5 Click Next to begin the installation process.



- 6 The Data Access Components copies files to your system. When complete, the Data Access Pack Setup program informs you that it has successfully completed the installation and exits.
- 7 After installing MDAC, you need to reboot your system for the changes to take place.

Chapter 2 Getting Started

Installing DCOM

DCOM for Windows 98 is included on the MAS 90 CD-ROM and is copied to the Workstation Setup (*WKSETUP*) directory when the Server component is installed.

To install DCOM

- 1 Open the Windows Explorer and change directories to the *MAS90\WKSETUP\DATAACC\DCOM\DCOM98*.
- 2 Double-click the DCOM98.EXE file to start the installation.
- 3 After completing the DCOM installation, re-run the MDAC installation routine, which can be found in the *MAS90\WKSETUP\DATAACC* directory called MDAC_TYP.EXE. These files can also be downloaded from the Microsoft Web site.

MAS 90 Workstation Identification and Session Tracking

Every MAS 90 session initiated requires a unique identifier (created by setting the PVXFID0 environment variable) distinguishing each session from every other session running on the server. Additionally, the MAS 90 Launcher launches a separate session of MAS 90 for each module executed. When MAS 90 Level 3 and MAS 90 were first introduced, a new session tracking algorithm was developed to allow significantly more users and more sessions per user by compressing the FID(0) value without major changes to the data structure itself. A base PVXFID0 value for each individual workstation was still required but session tracking was handled by MAS 90.



Assigning a Workstation ID

MAS 90 sets the workstation ID automatically, when possible, by using the machine name of the workstation. If a machine name is not available, MAS 90 requires a PVXFID0 value to be set in the environment.

It is very important that all workstations have unique computer names. Most networks force users to have unique machine names; however, some older systems may allow duplicates. The following algorithm is used to assign a PVXFID0 value (in the order shown below).

- The FID0MAP.INI file is located in the *MAS90\HOME* directory. If the workstation's computer name is located in this file, the value associated with this machine is used as the PVXFID0.
- If the user's machine is not located in this file and if an existing PVXFID0 value is found in the environment, the existing PVXFID0 is written into the FID0MAP.INI file and is used in the future when MAS 90 is started if the PVXFID0 value is not already assigned to another machine. If the PVXFID0 is already assigned, MAS 90 automatically assigns the next highest PVXFID0 value to this workstation. Note that T0 is a reserved PVXFID0 value. If T0 is set in the environment, a different PVXFID0 value is assigned to this workstation.
- If the value is not located in this file and a PVXFID0 value is not found in the environment, MAS 90 assigns the next highest PVXFID0 value, starting with 101, automatically. Note that PVXFID0 values cannot exceed 400.
- If a workstation name cannot be determined by MAS 90 (in the case of some environments), the PVXFID0 value in the user's environment is used. If the PVXFID0 value is not found, MAS 90 will not be able to start.

Users can modify the FID0MAP.INI file to customize their PVXFID0 values for their machine. Note that if the user's machine name changes, their PVXFID0 value changes as well. The automatic assignment of PVXFID0 values starts at 101; values 0 – 100 are reserved for users who have to assign their PVXFID0 values manually.



Chapter 2 Getting Started

Overriding the FID0 Value

In some cases, you may need to override the FID0 value assigned by MAS 90. To override the FID0 value, assign an environment variable called MAS90FID that has a value between T0 and T99. This is the FID0 value that is used by MAS 90 when the workstation accesses the system. Assigning a value above 99 is ignored and the FID assignment from the MAS 90 program takes precedence. When overriding the FID0 value, make sure that there are no duplications of FID0 values between different users.

Note

If you are unfamiliar with DOS batch files, consult your system administrator before editing this file.

To add an environment variable in the Windows operating system, edit the AUTOEXEC.BAT file using Microsoft Notepad or any other nonformatting text editor. Add the following command line to the AUTOEXEC.BAT file.

```
SET MAS90FID=Txx
```

In this command line, **xx** represents a numerical value between 0 and 99. Save the file. You must restart Windows before the changes will take affect.

To add an environment variable in the Windows NT operating system

- 1 Right-click the My Computer icon and click Properties.
- 2 In the System Properties window, click the Environment tab and add **MAS90FID** as a new user variable with a value of **Txx** (where **xx** represents a numerical value between 0 and 99).
- 3 Click Set to apply the changes; you do not need to restart Windows NT.
- 4 Click OK to exit the System Properties window.

Starting MAS 90 for the First Time

After System Setup, Library Master, and all MAS 90 modules are installed, you are ready to start the MAS 90 software. If you installed MAS 90, a program group is created (or a Start menu item under the Programs submenu is added). Double-click the MAS 90 icon in this program group to start MAS 90 and perform System Startup. For more information, see Performing System Startup Tasks in your *Getting Started Guide*.

Chapter 3

Installing Crystal Reports

Crystal Reports Overview

Crystal Reports is a powerful, graphics-oriented reporting program that allows users to customize their graphical forms. Crystal Reports is fully integrated with MAS 90. MAS 90 provides a number of customizable Crystal Reports forms as part of the standard installation. The Workstation Setup programs for MAS 90 will install the standard Crystal Reports Run-Time Engine on each workstation allowing all users to view reports created through Crystal; however, to modify or customize the standard forms included with MAS 90, or to create your own reports, you must install the Crystal Reports Design Environment. This is provided on the separate Crystal Reports CD-ROM.

Installing the Design Environment

You can install Crystal Reports in a number of different configurations. For information on the various options and configurations available, refer to the Crystal Reports user's manual and online documentation. This section of the manual discusses the relevant options required to run in the MAS 90 environment.

Each user that will be designing, customizing or modifying Crystal Reports will need to install the Crystal Reports CD-ROM on their local system.

Note

For improved performance, users with enough spare hard drive space on their local workstations can load the complete version of Crystal Reports on their systems.

If you are installing to the workstation for the purposes of modifying or creating Crystal reports, you will need to install Crystal Report and perform a Typical installation. The Typical installation uses pre-assigned settings. For more information, see [Installing Crystal Reports to the Workstation](#).

If you are installing Crystal Reports to the network server, refer to the SCR8_Installation_Overview PDF file. This PDF file is located at the root Crystal Reports CD-ROM.

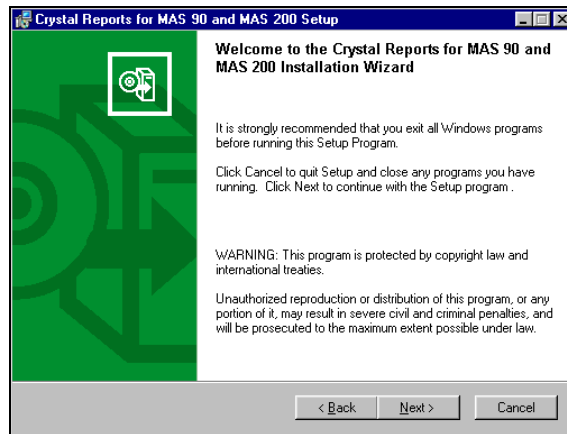


Chapter 3 Installing Crystal Reports

Installing Crystal Reports to the Workstation

To install Crystal Reports to the workstation

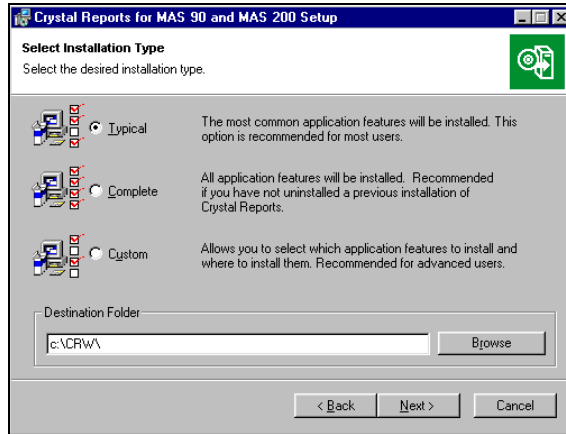
- 1 Place the Crystal Reports CD-ROM in the CD-ROM drive.
- 2 If Autorun is enabled on the workstation, the splash screen appears; otherwise, click Run on the Start menu and type **D:\Start.exe**, where **D:** is the CD-ROM drive. Click Install Crystal Reports.
- 3 The Crystal Reports for MAS 90 and MAS 200 Setup window appears. Click Next.



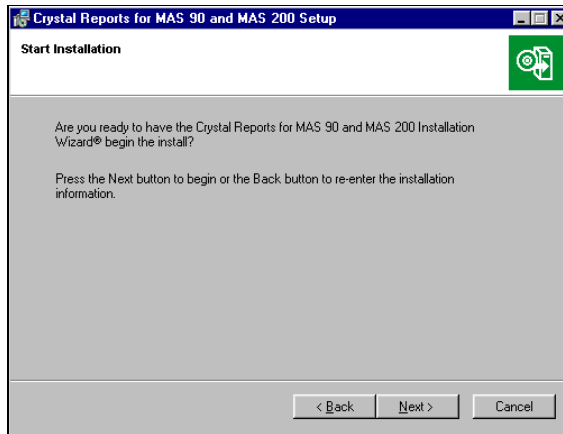
- 4 In the License Agreement dialog box, select the **I accept the Agreement License** option and click Next.

Chapter 3 Installing Crystal Reports

- 5 Click Browse to change the installation path. Select the **Typical** option and click Next.

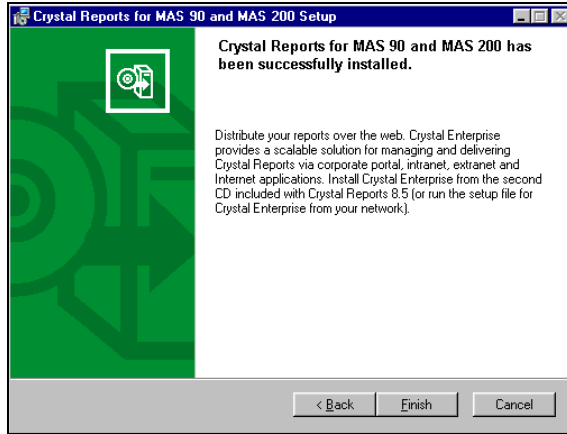


- 6 Click Next to begin the installation process.



Chapter 3 Installing Crystal Reports

- 7 A progress meter appears while the installation is in progress. When the installation is complete, the following window appears. Click Finish to exit.



Chapter 4

Installing the PCCharge Payment Server

PCCharge Payment Server

MAS 90 integrates with the PCCharge Payment Server to provide validation and authorization of credit cards through modules such as Accounts Receivable, Sales Order, and e-Business Manager. The PCCharge Payment Server works with a number of popular merchant accounts.

Installing the Payment Server

Installation of the PCCharge Payment Server is a multi-phase process.

To install the PCCharge Payment Server

- 1 Make sure you have all the information required to configure your PCCharge Payment Server before running the installation. Follow the instructions included in the PCCharge Payment Server online documentation.
- 2 Review the PCCharge Payment Server manual available on the PCCharge Payment Server CD-ROM. The manual is provided in an Adobe Acrobat PDF format.
- 3 Install the PCCharge Payment Server. Select a server on your network that has a modem connection or access to the Internet. You will need to determine your hardware requirements based on which merchant you are using.
- 4 Contact GO Software Technical Support to activate your PCCharge Payment Server software (this information is also included in the PCCharge Payment Server online documentation). In the process, GO Software Technical Support will walk you through the initial configuration of PCCharge Payment Server and answer any questions you might have about the software and credit card processing.
- 5 MAS 90 communicates with the PCCharge Payment Server via TCP/IP. This is not the default configuration. If you did not configure TCP/IP, perform steps 6 through 7.

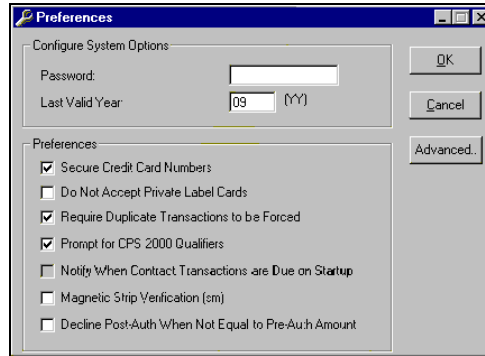
Note

Almost all merchant accounts support modem connections but only a handful support SSL through the Internet.



Chapter 4 Installing the PCCharge Payment Server

- 6 To enable this configuration, you must enable TCP/IP support and establish a port on which the PCCharge Payment Server will be listening. Start the PCCharge Payment Server and click Preferences on the Setup menu. Click Advanced.



- 7 The Advanced Options window appears. Click Use TCP/IP Connection in the **TCP/IP Communications** section.

The Local Port Number defaults to 31419. You can change this to any port number that is not currently in use on this workstation by another application. Do not use ports under 1024. These ports are reserved for common services (such as HTTP, SSL, and SMTP).



Chapter 4 Installing the PCCharge Payment Server

Consult your System Administrator to verify there are no port conflicts occurring on the machine to which you are installing the Payment Server. Write down the port number if you change it so that it can be recorded in MAS 90.

Advanced Configuration Setup

Timer Setup

Queue Timer Interval: 00:50 Seconds

Multi-trans Wait Time: 0 Seconds

TCP/IP Communications

Use TCP/IP Connection

Local Port Number: 31419

Proxy Server Information

Use Proxy Server

IP Address: _____

Encryption Information

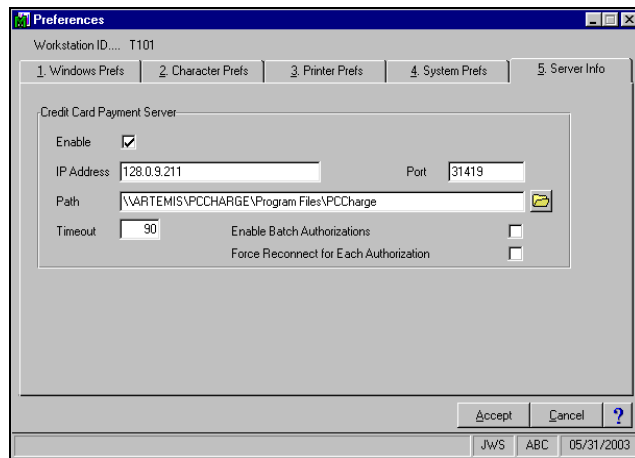
Private Key: _____

- 8 Configure the MAS 90 component so the applications can communicate with the PCCharge Payment Server.



Chapter 4 Installing the PCCharge Payment Server

- 9 The PCCharge Payment Server is not accessible until the Credit Card Processing module is registered in Library Master Production Registration Maintenance. You can find the serial number and activation key on your packing slip or invoice. To enable the Credit Card Processing module, in the Preferences window, click the Server Info tab. If the Credit Card Processing module is not registered, the fields on the Server Info tab are not available.



Accessing the Payment Server Manual

The PCCharge Payment Server manual is available on the PCCharge Payment Server CD-ROM. If you do not have the Adobe Acrobat Reader installed on your workstation, you will need to install it before accessing the documentation. You cannot view the PCCharge Payment Server manual until the Acrobat Reader is installed.

To view the PCCharge Payment Server manual, open Windows Explorer and browse to the CD-ROM drive where the PCCharge Payment Server CD-ROM is located and double-click the DOCUMENTATION.PDF file.

Chapter 4 Installing the PCCharge Payment Server

Support and Upgrades

GO Software provides support for the PCCharge Payment Server product and can assist you with troubleshooting the setup, configuration and continuing maintenance of the server. Contact GO Software if you are having problems receiving authorizations. For contact information, refer to the PCCharge Payment Server Online documentation.



Chapter 5

Installing Onto a Single User System

This chapter specifically covers stand-alone (single-user) installations. Minimum system requirements and sample configuration files accompany each platform. For operating system requirements, see the Supported Platform Matrix on the Best Software Web site.

Windows 98/Me

Follow the installation procedures for Windows 98/Me from the CD-ROM distribution media. Installation of Windows 98/Me can also be performed from the network. The Windows 98/Me Installation wizard walks you through the installation; a Typical installation is recommended.

Windows NT/2000/XP Workstation

This section discusses the use of Windows NT/2000/XP as a single-user workstation. The About Program Manager, About Windows NT, or About Windows XP dialog box should display information regarding the build of Windows NT/2000/XP currently installed, as well as the service packs for the operating system. It is important to keep the operating system on the latest service packs available. Installing the latest service pack installs all previous service packs. To obtain information on the latest Windows service packs, see the Supported Platform Matrix on the Best Software Web site.

Printer Setup

If everything is set up correctly, you should be able to print to the printer from any Windows application, such as Microsoft Notepad or WordPad. Do not run MAS 90 until you are sure that you can print to at least one Windows printer set up in Print Manager.



Chapter 6

Installing Onto a Novell NetWare 3 Network

Note

For operating system requirements, see the Supported Platform Matrix on the Best Software Web site.

This chapter discusses the use of Novell NetWare as a server and the various configurations required by the server and workstations in order for MAS 90 to operate properly in this environment. For specific workstation setups, refer to the appropriate section in this chapter for the operating system under which the workstation is running.

Setup and Configuration

Warning

Failure to exit MAS 90 software through the normal procedures may result in data loss or corruption.

Always exit the MAS 90 software completely before turning off or rebooting your workstation. Similarly, shutting down NetWare while anyone is working in MAS 90 is likely to result in data corruption. For this reason, provide your NetWare server and any critical workstations with Novell-approved uninterruptible power supplies.

If you are running a disk caching program (such as SMARTDRV or Super PC Kwik) you may want to disable the cache while using NetWare; there have been sporadic reports of conflict between SMARTDRV and the NetWare shell programs (LSL/mlid/IPXODI/VLM).

NetWare Rights

MAS 90 users need full rights (for example, read, write, create, erase, modify, and file scan) to all MAS 90 data directories. Grant each user account full rights to all data directories with MAS 90 data files that the user should be able to use. Module data directories are named with the module code and the company code of the data in that directory (for example, *PRABC* has the Payroll data for company code ABC). All MAS 90 users should also have full rights to the *MAS90ISOA* and *MAS90HOME* directories.



Chapter 6 Installing Onto a Novell NetWare 3 Network

Additionally, full rights must be granted to users for the following combinations.

- Payroll users need full rights in the *MAS90\PR* (program) directory to maintain the Tax Tables (which are the same for all company codes).
- Anyone authorized to use Report Master needs full rights to the *MAS90\RM* directory to maintain reports (which are the same for all company codes). The same applies to Import Master (*MAS90\DI*) and PostMaster (*MAS90\PM*).
- Time and Billing users need full rights in the *MAS90\TB* directory to maintain billing formats (which are the same for all company codes).

Configuring Captured Printers in Device Configurator

This section covers captured printer configurations using Library Master Device Configurator. Library Master Device Configurator is provided as a convenience for users upgrading from DOS versions of MAS 90 to the Windows version of MAS 90. It is recommended that you print to printers defined through Windows instead of using Library Master Device Configurator. Printers that are defined through Windows automatically appear on the printer selection list. Captured printing refers to the redirection of print output from a workstation to a virtual network printer that is shared between several workstations.

All printer configurations assume that the printer is already captured at the workstation. There is nothing in Library Master Device Configurator that performs any part of a NetWare capture. Before you attempt to configure printers in MAS 90 software, you should have a list of the printers that are captured on your workstation. One way to determine the queue names captured on this workstation is to use the command `CAPTURE SHOW` at the MS-DOS prompt (on any drive) any time after logging onto NetWare. If you receive a **Bad Command or File Name** error when running the `CAPTURE SHOW` command, make sure that you have a search path to the *PUBLIC* directory on the *SYS* volume of your server. If you have no captured printers, your network administrator must capture the printers outside of MAS 90.

EXECON and EXECOFF, previously used in Library Master Device Configurator, are no longer supported in Windows.



Configuring Local Printers in Device Configurator

This section covers local printer configurations using Library Master Device Configurator. Library Master Device Configurator is provided as a convenience for users upgrading from DOS versions of MAS 90 to the Windows version of MAS 90. You should print to printers defined through Windows instead of using Library Master Device Configurator. Printers that are already defined through Windows will automatically appear on the printer selection list. In a network environment, you can have a mix of different types of printers attached to various workstations. Each of these printers may require a different configuration for such features as compressed printing and the number of lines per page.

Defining Local Printers for a Workstation

Local printing refers to making Device Configurator printers conditionally available to workstations based on their workstation ID. Unlike global device configurators, local printers are only available to the workstation for which it is defined. MAS 90 software allows you to configure local printers in such a way that a given workstation displays its own local printers in the Printer Selection window. A workstation does not display the local printers attached to any other workstation.

To define local printers for a workstation

- 1 On the Library Master Utilities menu, click Device Configurator.
- 2 Click Local Printers, and enter the workstation ID for the workstation that has a local printer. This should be the same identifier shown on the System Information dialog box for the workstation (click Run on the File menu and type ***INFO**). This workstation ID is added to the third line of the display while defining local printers. For more information, see Device Configurator in your *Library Master* manual.
- 3 Define the printer devices that are local to the workstation. The device codes must be unique between every workstation's local printers and the global printers.



Troubleshooting

Because the MAS 90 software uses high-level techniques to access computer resources, most problems with computer hardware can be quickly diagnosed and resolved. When an error occurs, take the time to write the message exactly and what you did just before the error message appeared. If possible, click Info on the error message dialog box; this produces more information about the error that helps your authorized Reseller or Consultant isolate the cause of the problem and provide the correct solution as quickly as possible. For more information, refer to the troubleshooting templates on the Best Software Web site.

Novell NetWare Networks

Note

Long File Name support is required on the NetWare volume to which MAS 90 will be installed.

To obtain a list of required NetWare patches for each version of NetWare, refer to the Supported Platform Matrix on the Best Software Web site and the PATLIST.HTM document on the Novell Internet Web site.

To determine the level of NetWare, type the following command at the DOS prompt:

Note

For specific support on operating system configuration, consult the vendor from whom you purchased that product.

NVER

Each server you are logged onto displays the user license and the current version of NetWare that is running. An example of the output from the NVER command is shown below.

```

NETWARE VERSION UTILITY, VERSION 3.75
NetBIOS Protocol Specification: V-2.0
IPX Version: 3.10
SPX Version: 3.10
LAN Driver: NDIS 3.1 DRIVER V0.00
Shell: V3.26 Rev. A
DOS: MSDOS V7.00 on IBM_PC
FileServer: KIYONE
Novell NetWare v3.12 (100 user) (8/12/93)
FileServer: MIHOSHI
Novell NetWare v3.12 (50 user) (8/12/93)

```

Chapter 6 Installing Onto a Novell NetWare 3 Network

If you receive a **Bad Command or File Name** error message, change to the drive mapping for the server's *SYS* volume and then change it to the *PUBLIC* directory.

Checklists

When installing MAS 90 to a NetWare server, proceed to the appropriate checklist on the following pages for the specific type of workstation attaching to the server. For a current listing of supported NetWare versions, see the Supported Platform Matrix on the Best Software Web site.

Determining Hard Disk Space

Warning

Allow for as much disk space as possible. If disk space requirements are not met, the upgrade will encounter problems that may require restoring files from a backup.

Before installing to the server, make sure that there is adequate hard disk space available for the application. If you are upgrading an existing MAS 90 installation and want to convert data files, determine which conversion method to use. Open a DOS prompt and change to the *MAS90* directory. Type **DIR *.SOA /S** to view the total amount of bytes currently occupied by MAS 90 files and the total amount of bytes free on the hard drive. If alternate directories are used, the information obtained from the DIR command will not be accurate.

If performing a default upgrade (in-place), multiply the total amount of bytes currently occupied by MAS 90 files by 1.5 to determine approximately how much space is necessary for the data conversion. This space is primarily required for temporary files during conversion; however, MAS 90 files are slightly larger than Level 2 files.

Note

Parallel upgrades may require more hard disk space if your hard drive is partitioned for 16 or 32 K sectors.

If converting from EVOLUTION/2 data (parallel upgrade), multiply the total amount of bytes currently occupied by MAS 90 files by 2.5 to determine approximately how much space is necessary for the data conversion. Because new copies of the data files are created for each module and company code, additional space is required temporarily to perform the conversion. Additionally, MAS 90 files are slightly larger than Level 2 files.

Chapter 6 Installing Onto a Novell NetWare 3 Network

Windows 98/Me Workstations

Use the following checklist for Windows 98/Me workstations that will be running MAS 90.

Note

Verify that the name of the Windows directory has not changed to something other than WINDOWS during installation.

- 1____ Verify that Windows is installed on the local hard drive. Running a shared version of Windows on a network drive is not supported. If there is no *WINDOWS* directory off the root of the local drive, it is possible that Windows is running from a server. A Windows utility program such as Norton Utilities, or WinProbe shows you where Windows is running from.

Note

For specific support on printers and operating system configuration, consult the vendor from whom you purchased that product.

- 2____ Verify the minimum system requirements for a Windows workstation. For operating system requirements, see the Supported Platform Matrix on the Best Software Web site. Install additional memory or upgrade the processor, if necessary.
- 3____ MAS 90 requires approximately 50-100 MB of disk space on the workstation depending on the number of modules installed. If Crystal Reports is installed on the local workstation, the hard drive on which Crystal Reports is installed requires an additional 400 MB.
- 4____ Verify that Microsoft Client for NetWare Networks or Novell Client for Windows 98/Me is installed. For operating system requirements, see the Supported Platform Matrix on the Best Software Web site.

Warning

The path specified for MAS 90 operation should not be assigned as a SEARCH drive.

- 5____ Verify that the network is accessible from this workstation. Restart Windows 98/Me. After logging onto the server, all workstations should have mapped network drives that have access to the directory where MAS 90 software is or will be installed. The drive mapping for the MAS 90 software on each machine must be mapped on the same path. For example, one computer cannot have MAS 90 mapped on the *X:\APPS\MAS90* directory while a second computer has MAS 90 mapped on the *X:\MAS90* directory.
- 6____ Make sure that the workstation can print to a network printer from Windows 98/Me, either using Microsoft Notepad, Word, or any other Windows program.

Chapter 6 Installing Onto a Novell NetWare 3 Network

- 7____ Verify that the TEMP variable in the operating system exists and points to a valid temporary directory. This can be done by opening a command prompt and typing **SET**. MAS 90 and Crystal Reports will not function properly if this variable is not set.
- 8____ Restart the system before running MAS 90.




Chapter 7

Installing Onto a Novell NetWare 4 or 5 Network

This chapter describes the setup and configuration for a Novell NetWare 4 or 5 network. For information on operating system requirements, see the Supported Platform Matrix on the Best Software Web site.

Setup and Configuration

Before installing to the server, make sure there is adequate hard disk space available for the application. If you are upgrading an existing MAS 90 installation and you want to convert data files, determine which conversion method to use, then open a DOS prompt and change to the *MAS90* directory. Type **DIR *.SOA /S** to obtain the total amount of bytes currently occupied by MAS 90 files and the total amount of bytes free on this particular hard drive. If alternate directories are used, the information obtained from the DIR command will not be accurate.

 **Warning**
Allow for as much disk space as possible. If disk space requirements are not met, the upgrade will encounter problems that may require restoring files from a backup.

If performing a default upgrade (in-place), multiply the total amount of bytes currently occupied by MAS 90 files by 1.5 to determine approximately how much space is necessary for the data conversion. This space is primarily required for temporary files during conversion; however, MAS 90 files are slightly larger than Level 2 files.

If converting from EVOLUTION/2 data (parallel upgrade), multiply the total amount of bytes currently occupied by MAS 90 files by 2.5 to determine approximately how much space is necessary for the data conversion. Because new copies of the data files are created for each module and company code, additional space is required temporarily to perform the conversion. Additionally, MAS 90 files are slightly larger than Level 2 files.

EXECON and EXECOFF, previously used in Library Master Device Configurator, are no longer supported in Windows. MAS 90 prints directly to the Windows default printer; printer resources must be configured in the Print Manager.

Chapter 7 Installing Onto a Novell NetWare 4 or 5 Network

Windows 98/Me Workstations

Use the following checklist for Windows 98/Me workstations that will be running MAS 90 on a NetWare 4 or 5 server.

Note

Verify that the name of the Windows directory has not changed to something other than WINDOWS during installation.

- 1____ Verify that Windows is installed on the local hard drive. Running a shared version of Windows on a network drive is not supported. If the WIN.COM file in the *WINDOWS* directory off the root of the local drive does not exist, it is possible that Windows is running from a server. A Windows utility program, such as Norton Utilities or WinProbe, shows you where Windows is running from.
- 2____ Verify the minimum system requirements for the Windows 98/Me workstation. For operating system requirements, see the Supported Platform Matrix on the Best Software Web site. Install additional memory or upgrade the processor if necessary.
- 3____ MAS 90 requires approximately 50-100 MB of disk space on the workstation depending on the number of modules installed. If Crystal Reports is installed on the local workstation, the hard drive on which Crystal Reports is installed requires an additional 400 MB.
- 4____ Verify that Microsoft Client for NetWare Networks or Novell Client for Windows 98/Me is installed. For operating system requirements, see the Supported Platform Matrix on the Best Software Web site.
- 5____ Verify that the network is accessible from this workstation. Restart Windows 98/Me. After logging onto the server, all workstations should have mapped network drives that have access to the directory on which the MAS 90 software is or will be installed. The drive mapping for the MAS 90 software on each machine must be mapped on the same path. For example, one workstation cannot have MAS 90 mapped on the *X:\APPS\MAS90* directory while a second workstation has MAS 90 mapped on the *X:\MAS90* directory.
- 6____ Make sure that the workstation can print to a network printer from Windows 98/Me, either using Microsoft Notepad, Word, or any other Windows program.

Note

For specific support on operating system configuration, consult the vendor from whom you purchased that product.

Warning

The drive specified for MAS 90 operation should not be assigned as a SEARCH drive.



Chapter 7 Installing Onto a Novell NetWare 4 or 5 Network

- 7____ Verify that the TEMP variable in the operating system exists and points to a valid temporary directory. This can be done by opening a command prompt and typing **SET**. MAS 90 and Crystal Reports will not function properly if this variable is not set.
- 8____ Restart the system before running MAS 90.



Chapter 8

Installing Onto a Windows NT/2000 Server Network

This chapter describes the setup and configuration of the Windows NT/2000 Server and supported workstation environments specifically for MAS 90. For operating system requirements, see the Supported Platform Matrix on the Best Software Web site.

Setup Procedures

Follow the instructions for setting up the Windows NT/2000 Server from the *Windows Server Installation Guide*. Read the Installation Guide completely before proceeding with the installation of a Windows NT/2000 Server. If you need help installing a Windows NT/2000 Server, contact your local Microsoft® expert or Microsoft's Product Support via Internet, or directly by phone.

Note

For specific support on your hardware or operating system, contact the vendor from whom you purchased that product.

During installation you are prompted for a domain name, which will be the domain of which this Server is a member, or for which it is a domain controller. The Windows 98/Me workstations that connect to the Server to run MAS 90 will use this domain as well.

After installing the Windows NT/2000 Server, apply the latest service pack for Windows NT/2000. For the most current information, see the Supported Platform Matrix on the Best Software Web site.



Networking Procedures

The following section describes how to attach to a Windows NT/2000 Server from a Windows 98/Me workstation.

Windows 98/Me

Two components are required for setting up a workstation with Windows 98/Me to allow it to communicate with a Windows NT/2000 network. The first component is the actual setup of the networking protocols that allow the computer to communicate with the NT/2000 Server. The second component is specifying the domain to which the Windows 98/Me workstation will connect.

Setting Up Networking

Networking components are divided into clients, adapters, protocols, and services. Clients provide the necessary redirectors for the specific network. This allows the computer to connect and access shared network resources.

Adapters are the drivers for the network interface card (NIC) currently installed in the workstation. This driver may need to be obtained by the NIC manufacturer if it is not provided by Microsoft with Windows 98/Me.

Protocols are rules and/or conventions used by computers to send information across a network. Windows 98/Me includes NetBEUI (used for Microsoft Windows networks), IPX/SPX (used primarily for Novell networks), and TCP/IP.

Services are processes that perform specific functions on a network and usually provide some application programming interface (API) for other programs to call.

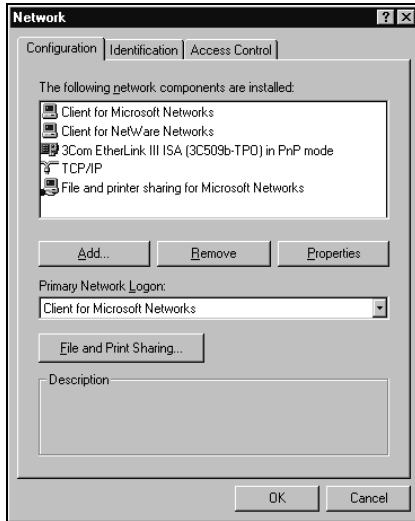
Warning

Do not install the IPX/SPX protocol; it causes errors and data corruption.



Chapter 8 Installing Onto a Windows NT/2000 Server Network

Clients, adapters, protocols, and services can be established on a Windows 98/Me workstation through the Network program in the Control Panel. A dialog box similar to the following appears.

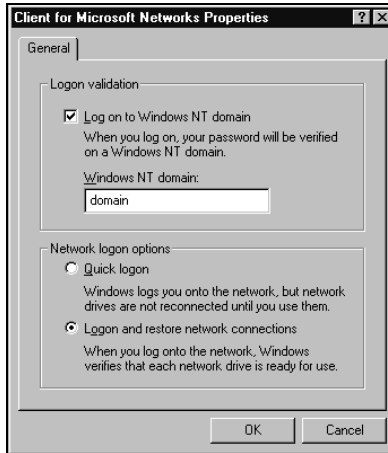


To connect to a Microsoft Windows NT Server, Microsoft's Client for Microsoft Networks must also be loaded. For more information on connecting Windows 98/Me workstations to a Windows NT Server, refer to your Windows User's Guide or the network operating system documentation.

Chapter 8 Installing Onto a Windows NT/2000 Server Network

Logging Onto a Domain

After Microsoft's Client for Microsoft Networks is loaded, select this client in the Network window and click Properties. The following dialog box appears.



Select the **Log on to Windows NT domain** check box to enable the Windows 98/Me workstation to log onto a Windows NT domain. Enter the domain name of the NT Server at the **Windows NT domain** field. After clicking OK, restart the Windows 98/Me workstation. After Windows 98/Me restarts, log onto the Windows NT domain. Before installing the MAS 90 software, create a share point on the NT/2000 Server and make sure that the user name that will be used to install the software has full privileges for the share point. For more information regarding creating users and creating share points, refer to your Microsoft Windows NT/2000 User's Guide.

Chapter 8 Installing Onto a Windows NT/2000 Server Network

Printer Setup

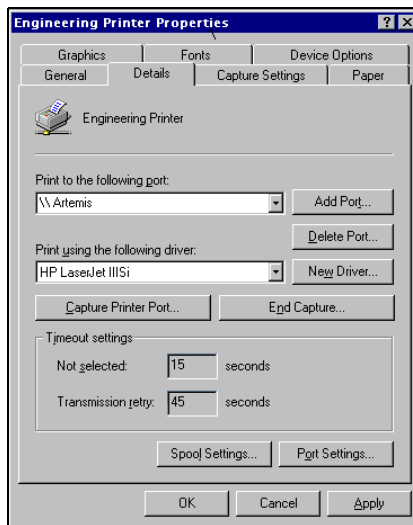
Before attempting to print in MAS 90, a printer must be set up in the Windows environment. To set up a new printer in Windows 98/Me, click Settings on the Start menu, then select Printers. Double-click Add Printer and follow the instructions in the Add Printer Wizard.

Printing Procedures

Note

The properties tabs are different for each type of printer driver; however, they should all have a Details tab.

On completion of the Add Printer Wizard, a new printer item appears in the Printers folder with the name of the newly created printer. If it is necessary to change the settings on this printer, right-click the Printer button and select the Properties menu item. The properties of the printer item appears. Select the Details tab to change the port to capture or change the location of the printer itself.



These properties can be changed as many times as necessary. Other tab options do not affect the way MAS 90 prints to this printer. Click OK when you are finished editing the printer's properties.

Chapter 8 Installing Onto a Windows NT/2000 Server Network

MAS 90 usually prints to the default Windows printer unless directed to do otherwise. You can set a printer to be your default Windows printer by right-clicking the printer in the Printers list box and selecting **Set As Default**. If everything is set up correctly, you should be able to print to the printer from any Windows application, such as Microsoft Notepad or WordPad.

Drive Mappings

To access MAS 90 from a workstation, the workstation must establish a drive mapping to a sharepoint that is above the MAS90 directory in the NT Server's directory structure. It is important that this drive path mapping be identical for each workstation. Although the drive letters do not need to be the same, the path to the MAS 90 programs must be the same. For example, if a user has drive K: mapped to `\\KASUMI\ROOT\ACCT` (where *KASUMI* is the name of the NT Server, *ROOT* is the shared resource, and *ACCT* is a directory off of *ROOT*) and installs MAS 90 from this system, all other workstations must see MAS 90 from the same "false root." Another user cannot access MAS 90 with a drive mapping of `\\KASUMI\ROOT`. All users should access MAS 90 from the same drive letter and path mappings.



Checklists

Use the following checklists to ensure the portions of the NT Server that directly affect MAS 90 are configured properly. If you are unfamiliar with Windows NT/2000 Server, consult a hardware engineer or consultant trained in Windows NT/2000. Best Software cannot offer the level of support required to specifically set up a Windows NT/2000 network for each individual client because individual server requirements vary greatly.

Windows 98/Me Workstations (Workstation Checklist)

Use the following checklist for a Windows 98/Me workstation connected to a Windows NT Server network.

- 1 _____ Verify the minimum system requirements for the Windows 98/Me workstation. For operating system requirements, see the Supported Platform Matrix on the Best Software Web site.
- 2 _____ Verify that Windows is installed on the local hard drive. Running a shared version of Windows on a network drive is not supported. If the WIN.COM file in the *WINDOWS* directory off of the root of the local drive does not exist, it is possible that Windows is running from a server. A Windows utility program, such as Norton Utilities or WinProbe, verifies whether Windows is running from a server.
- 3 _____ MAS 90 requires approximately 50-100 MB of disk space on the workstation depending on the number of modules installed. If Crystal Reports is installed on the local workstation, the hard drive on which Crystal Reports is installed requires an additional 400 MB.
- 4 _____ Verify that the network is accessible from this workstation. After logging onto the server, all workstations should have mapped network drives that have access to the directory where MAS 90 software is or will be installed. The drive mapping for the MAS 90 software on each workstation must be mapped on the same path. For example, one workstation cannot have MAS 90 mapped on the *X:\APPS\MAS90* directory while a second workstation has MAS 90 mapped on the *X:\MAS90* directory.
- 5 _____ Verify that the workstation can print to a Windows printer, either using Microsoft Notepad, Word, or any other Windows program.

Note

Verify that the name of the Windows directory has not changed to something other than *WINDOWS* during installation.

Note

For specific support on printers and operating system configuration, consult the vendor from whom you purchased that product.

Chapter 8 Installing Onto a Windows NT/2000 Server Network

- 6____ Verify that the TEMP variable in the operating system exists and points to a valid temporary directory. This can be done by opening a command prompt and typing **SET**. MAS 90 and Crystal Reports will not function properly if this variable is not set.
- 7____ Reboot the system before starting MAS 90.

Windows NT/2000/XP (Workstation Checklist)

Use the following checklist for a Windows NT/2000/XP Workstation connected to a Windows NT/2000 Server network.

- 1____ Verify the minimum system requirements for the workstation. For operating system requirements, see the Supported Platform Matrix on the Best Software Web site.
- 2____ Verify that the latest service pack for NT/2000 is installed on the workstation. It is very important to install the most current service packs to both NT Workstations and Servers. For more information, see the Supported Platform Matrix on the Best Software Web site.
- 3____ Verify that Windows is installed on the local hard drive. Running a shared version of Windows on a network drive is not supported. If the WIN.COM file in the WINNT directory off the root of the local drive does not exist, it is possible that Windows is running from a server. A Windows utility program, such as Norton Utilities or WinProbe, verifies whether Windows is running from a server.
- 4____ Select **Network** from the Control Panel, which displays the Network window. On the Identification tab, verify that the **Computer name** and the **Workgroup** fields are correct. For more information on domain configurations, refer to the Windows NT/2000 Server User's Guide or online documentation.
- 5____ MAS 90 requires approximately 50-100 MB of disk space on the workstation depending on the number of modules installed. If Crystal Reports is installed on the local workstation, the hard drive on which Crystal Reports is installed requires an additional 400 MB.

Note

Verify that the name of the Windows directory has not changed to something other than WINNT during installation.

Note

For specific support on printers and operating system configuration, consult the vendor from whom you purchased that product.

Chapter 8 Installing Onto a Windows NT/2000 Server Network

- 6____ Verify that the network is accessible from the workstation. After logging onto the server, all workstations should have mapped network drives that have access to the directory where MAS 90 software is or will be installed. The drive mapping for the MAS 90 software on each machine must be mapped on the same path. For example, one workstation cannot have MAS 90 mapped on the *X:\APPS\MAS90* directory while a second workstation has MAS 90 mapped on the *X:\MAS90* directory.
- 7____ Verify that the workstation can print to a Windows printer, either using Microsoft Notepad, Microsoft Word, or any other Windows program.
- 8____ Verify that the TEMP variable in the operating system exists and points to a valid temporary directory. This can be done by opening a command prompt and typing **SET**. MAS 90 and Crystal Reports will not function properly if this variable is not set.
- 9____ Reboot the system before starting MAS 90.



Chapter 9

Installing Onto a Windows Peer-to-Peer Network

This chapter discusses the use of Windows 98/Me as a peer-to-peer workstation. For the most current system requirements, see the Supported Platform Matrix on the Best Software Web site.

Setup Procedures

Follow the installation procedures for Windows 98/Me from the CD-ROM distribution media. Installation of Windows 98/Me can also be performed from the network. The Windows 98/Me Installation Wizard will walk you through the installation; a Typical installation is recommended.

Networking Procedures

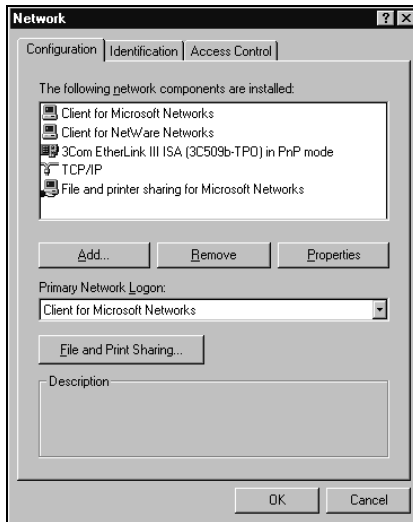
This section describes how to connect Windows 98/Me to a network. The procedure is identical for Windows (Windows 98/Me or Windows NT) and Novell NetWare networks. If you are not attaching Windows 98/Me to a network, proceed to [Printing Procedures](#).



Chapter 9 Installing Onto a Windows Peer-to-Peer Network

Establishing Network Connections

Establish your network protocol using the Network program in the Control Panel. A window similar to the following appears.



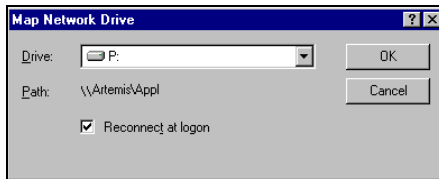
Networking components are divided into clients, adapters, protocols, and services.

- Clients provide the necessary redirectors for the specific network. This allows the computer to connect and access shared network resources.
- Adapters are the drivers for the network interface card (NIC) currently installed in the computer. This driver can be obtained from the NIC manufacturer if it is not provided by Microsoft with Windows 98/Me.
- Protocols are rules and/or conventions used by computers to send information across a network. Windows 98/Me includes NetBEUI (used for Windows networks), IPX/SPX (used primarily for Novell networks), and TCP/IP.
- Services are processes that perform specific functions on a network and usually provide some Application Programming Interface (API) for other programs to call.

Chapter 9 Installing Onto a Windows Peer-to-Peer Network

For more information on connecting Windows 98/Me workstations to a network server, refer to your Windows User's Guide or the network operating system documentation.

Each workstation must recognize the network drive on which the MAS 90 software is loaded as the same drive letter; however, Windows 98/Me allows users to connect to a network volume without mapping a drive letter to that volume. MAS 90 software cannot run from this kind of virtual drive that has no mapping assignment. Use the Network Neighborhood or Explorer in Windows 98/Me to set up the mappings on each workstation. Map a network drive through Explorer or Network Neighborhood by right-clicking the volume name and selecting the **Map Network Drive** option. A dialog box similar to the following appears.



Select a drive letter to which to map this drive and select the **Reconnect at logon** check box to connect this volume to this drive letter every time you log on. Click OK. This procedure must be used for any network configuration.

MAS 90 Workstation Setup

For individual Windows workstations to use MAS 90, you must install the appropriate DLLs and libraries in each system's `WINDOWS\SYSTEM` directory. This is accomplished by running the Workstation Setup utility. For more information, [see Workstation Setup](#).

Chapter 9 Installing Onto a Windows Peer-to-Peer Network

Printing Procedures

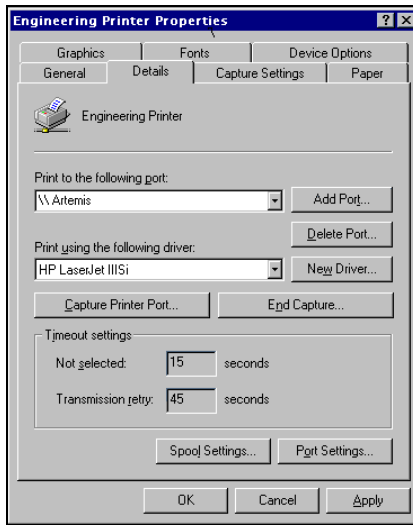
Network printers are mapped through Windows 98/Me if the appropriate network client is installed using the Network program in the Control Panel. To add a new printer, select the Settings/Printers option from the Start menu, and then double-click the Add Printer option. Follow the instructions from the Add Printer Wizard as directed.



After selecting the printer's queue, the wizard asks for the printer drivers, which can be obtained from the printer manufacturer if they are not included with Windows 98/Me. The wizard also requires a name for the printer that will be used throughout all Windows 98/Me applications when printing.

Changing Printer Settings

After completing the Add Printer Wizard, a new printer item appears in the Printers folder with the name of the newly created printer. If it is necessary to change the settings on this printer, right-click the Printer button and click the Properties button. The properties of the printer item appear. Select the Details tab to change the port being captured or the location of the printer itself. A sample of this window is shown below.



These properties can be changed as many times as necessary. Click OK when you are finished editing the printer's properties.



Checklists

The About Windows 98 or About Windows Me dialog box displays information about Windows 98/Me and the relevant service packs that have been installed on the system. Although recommended, the service pack is not required to run MAS 90. For the most current information, see the Supported Platform Matrix on the Best Software Web site.

Windows 98/Me (Server Checklist)

Use the following checklist for the server of a Windows 98/Me network.

1. Verify the minimum system requirements for the server running Windows 98/Me. For operating system requirements, see the Supported Platform Matrix on the Best Software Web site.
2. MAS 90 requires approximately 50-100 MB of disk space on the workstation depending on the number of modules installed. If Crystal Reports is installed on the local workstation, the hard drive on which Crystal Reports is installed requires an additional 400 MB.
3. If you are upgrading an existing MAS 90 Level 1.x or 2.x installation and want to convert data files, determine which conversion method to use. Open a DOS prompt and change to the *MAS90* directory. Type **DIR *.SOA /S** to obtain the total amount of bytes currently occupied by MAS 90 files and the total amount of bytes free on this particular hard drive. If alternate directories are used, the information obtained from the DIR command will not be accurate.

Warning

Allow for as much disk space as possible. If disk space requirements are not met, the upgrade will encounter problems that may require restoring files from a backup.

If an in-place upgrade is performed, multiply the total amount of bytes currently occupied by MAS 90 files by 1.5 to determine approximately how much space is necessary for the data conversion. This space is primarily required for temporary files during conversion; however, MAS 90 files are slightly larger than Level 2 files.

Chapter 9 Installing Onto a Windows Peer-to-Peer Network

If a parallel upgrade is performed, multiply the total amount of bytes currently occupied by MAS 90 files by 2.5 to determine approximately how much space is necessary for the data conversion. Because new copies of the data files are created for each module and company code, additional space is required temporarily to perform the conversion.

Note

For specific support on operating system commands such as BACKUP, consult your operating system manuals or contact the vendor from whom you purchased that product.

4. Make a backup of the server, especially if you are upgrading the software and data files. Verify this backup before installing.
5. Enable sharing on the root of the drive where MAS 90 is going to be installed. This can be accomplished in My Computer by right-clicking the root of the drive and selecting the Sharing option. Make sure that the share access type is set to **Full Control**.

Windows 98/Me (Workstation Checklist)

Use the following checklist for a client workstation of a Windows 98/Me network. All clients of a Windows 98/Me network should also be running Windows 98/Me.

1. Verify the minimum system requirements for the Windows 98/Me workstation. For operating system requirements, see the Supported Platform Matrix on the Best Software Web site.
2. Verify that Windows is installed on the local hard drive. Running a shared version of Windows on a network drive is not supported. If the WIN.COM file in the *WINDOWS* directory off of the root of the local drive does not exist, it is possible that Windows is running from a server. A Windows utility program, such as Norton Utilities or WinProbe, verifies whether Windows is running from a server.
3. MAS 90 requires approximately 50-100 MB of disk space on the workstation depending on the number of modules installed. If Crystal Reports is installed on the local workstation, the hard drive on which Crystal Reports is installed requires an additional 400 MB.

Note

Verify that the name of the Windows directory has not changed to something other than *WINDOWS* during installation.



Chapter 9 Installing Onto a Windows Peer-to-Peer Network

- 4_____ Verify that the network is accessible from this workstation. After logging onto the server, all workstations should have mapped network drives that have access to the directory where MAS 90 software is or will be installed. The drive mapping for the MAS 90 software on each machine must be mapped on the same path. For example, one workstation cannot have MAS 90 mapped on the `X:\APPS\MAS90` directory while a second workstation has MAS 90 mapped on the `X:\MAS90` directory.

Note

For specific support on printers and operating system configuration, consult the vendor from whom you purchased that product.

- 5_____ Verify that the workstation can print to a Windows printer, either using Microsoft Notepad, Word, or any other Windows program.
- 6_____ Verify that the TEMP variable in the operating system exists and points to a valid temporary directory. This can be done by opening a command prompt and typing **SET**. MAS 90 and Crystal Reports will not function properly if this variable is not set.
- 7_____ Reboot the system before starting MAS 90.



Chapter 10

Installing Onto a Windows NT/2000/XP Peer-to-Peer Network

This chapter describes the setup and configuration of the Windows NT/2000/XP Workstation Peer-to-Peer network. For the most current system requirements, see the Supported Platform Matrix on the Best Software Web site.

Drive Mappings

To access MAS 90 from a workstation, the workstation must establish a drive mapping to the NT server's shared resource (the root of the network drive or a subdirectory thereof). It is important that this drive path mapping be identical for each workstation. Although the drive letters do not need to be the same, the path to the MAS 90 programs must be the same. For example, if a user has drive K: mapped to `\\KASUMI\ROOT\ACCT` (where *KASUMI* is the name of the NT Server, *ROOT* is the shared resource, and *ACCT* is a directory off of *ROOT*) and installs MAS 90 from this system, all other workstations must see MAS 90 from the same "false root." Another user cannot access MAS 90 with a drive mapping of `\\KASUMI\ROOT`. All users should access MAS 90 from the same drive letter and path mappings.



Checklists

Use the following checklists as a guide to ensure that the most relevant portions of the NT Server that directly affect MAS 90 are configured properly. If you are unfamiliar with Windows NT Server, consult a hardware engineer or consultant trained in Windows NT. Best Software cannot offer the level of support required to specifically set up a Windows NT network for each individual client because everyone's individual server requirements vary greatly based on their business.

Windows NT/2000/XP Workstation (Server Checklist)

Use the following checklist for the machine acting as the peer-to-peer server.

- 1 _____ Verify the minimum system requirements for the NT Server. For operating system requirements, see the Supported Platform Matrix on the Best Software Web site.
- 2 _____ Verify that the latest service pack that has been tested by Best Software is installed on the NT Server. For more information, see the Supported Platform Matrix on the Best Software Web site.
- 3 _____ MAS 90 requires approximately 150-200 MB of disk space on the workstation depending on the number of modules installed. If Crystal Reports is installed on the local workstation, the hard drive on which Crystal Reports is installed requires an additional 400 MB.
- 4 _____ If you are upgrading an existing MAS 90 Level 1.x or 2.x installation and want to convert data files, determine which conversion method to use. Open a DOS prompt and change to the *MAS90* directory. Type **DIR *.SOA /S** to obtain the total amount of bytes currently occupied by MAS 90 files and the total amount of bytes free on this particular hard drive. If alternate directories are used, the information obtained from the DIR command is not accurate.

Warning

This is the most important item to check on an NT installation.

Warning

Allow for as much disk space as possible. If disk space requirements are not met, the upgrade will encounter problems that may require restoring files from a backup.



Chapter 10 Installing Onto a Windows NT/2000/XP Peer-to-Peer Network

If an in-place upgrade is performed, multiply the total amount of bytes currently occupied by MAS 90 files by 1.5 to determine approximately how much space is necessary for the data conversion. This space is primarily required for temporary files during conversion; however, MAS 90 files are slightly larger than Level 2 files.

If a parallel upgrade is performed, multiply the total amount of bytes currently occupied by MAS 90 files by 2.5 to determine approximately how much space is necessary for the data conversion. Because new copies of the data files are created for each module and company code, additional space is required temporarily to perform the conversion.

Note

For specific support on operating system commands such as BACKUP, consult your operating system manuals or contact the vendor from whom you purchased that product.

- 5_____ Make a backup of the server, especially if you are upgrading the software and converting data files. Verify this backup before installing.

Windows NT/2000/XP Workstations (Workstation Checklist)

Use the following checklist for a Windows NT/2000/XP Workstation connected to a Windows peer-to-peer network.

- 1_____ Verify the minimum system requirements for the workstation. For operating system requirements, see the Supported Platform Matrix on the Best Software Web site.
- 2_____ Verify that Windows is installed on the local hard drive. Running a shared version of Windows on a network drive is not supported. If the WIN.COM file in the *WINNT* directory off of the root of the local drive does not exist, it is possible that Windows is running from a server. A Windows utility program, such as Norton Utilities or WinProbe, verifies whether Windows is running from a server.
- 3_____ MAS 90 requires approximately 50-100 MB of disk space on the workstation depending on the number of modules installed. If Crystal Reports is installed on the local workstation, the hard drive on which Crystal Reports is installed requires an additional 400 MB.

Note

Verify that the name of the Windows directory has not changed to something other than WINNT during installation.

Chapter 10 Installing Onto a Windows NT/2000/XP Peer-to-Peer Network

- 4_____ Verify that the network is accessible from this workstation. After logging onto the server, all workstations should have mapped network drives that have access to the directory where MAS 90 software is or will be installed. The drive mapping for the MAS 90 software on each machine must be mapped on the same path. For example, one workstation cannot have MAS 90 mapped on the X:\APPS\MAS90 directory while a second workstation has MAS 90 mapped on the X:\MAS90 directory.

Note

For specific support on printers and operating system configuration, consult the vendor from whom you purchased that product.

- 5_____ Verify that the workstation can print to a Windows printer, either using Notepad, Word, or any other Windows program.
- 6_____ Verify that the TEMP variable in the operating system exists and points to a valid temporary directory. This can be done by opening a command prompt and typing **SET**. MAS 90 and Crystal Reports will not function properly if this variable is not set.
- 7_____ Reboot the system before starting MAS 90.

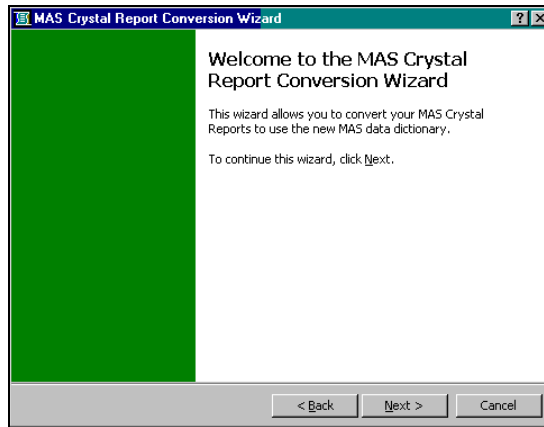


Appendix A

Converting MAS 90 Crystal Reports from a Prior Version

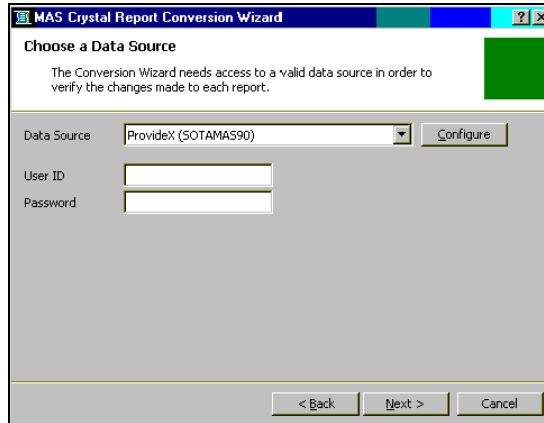
The MAS Crystal Report Conversion Wizard converts prior versions of MAS 90 Crystal Reports to the latest data dictionary revisions and Crystal Reports format.

- 1 From the *MAS90Home* directory, locate and double-click *mascrow.exe*. Click Next. The MAS Crystal Report Conversion wizard appears.



Appendix A Converting MAS 90 Crystal Reports from a Prior Version

- Click Configure. The Providex 32-bit ODBC Setup window appears.



- At the **Database Directory** field, verify the directory path.

At the **Company code** field, type your company code in uppercase. Verify that the company selected has the appropriate modules installed. For example, do not convert Manufacturing Crystal Reports (W/O or B/M) for demo company code ABC. Those modules do not exist and the conversion will complete on the reports.



Appendix A Converting MAS 90 Crystal Reports from a Prior Version

At the **Default UserID** field, type the user ID in uppercase and at the **Password** field, type the password in uppercase and click OK.

ProvideX 32-bit ODBC Setup (V3.21)

Change data source name, description, or options. Then choose OK.

Data Source Name: SOTAMAS90

Description: MAS 90 32-Bit ODBC Driver

Database Directory: \\ServerName\SharePoint\Mas90\
(This directory should contain PROVIDEX.DDF)

Definition File: _____
(Path of INI file for non-dictionary defined files)

Prefix: _____
(Prefix to data file, ';' prefixes separator)

Optional Information:

Company code: ABC

Default UserID: JCN

Password: *****

For security reasons, specifying a default UserID & Password is not recommended.

Cache Size MB: 4

Enable Debug:

Enforce DOUBLE:

NULL Date:

Dirty Bead:

Burst mode:

Key Restrict:

OK Cancel

- At the **User ID** and **Password** fields, type the same user ID and password in uppercase that you typed in the ProvideX 32-bit ODBC Setup window. Click Next.

MAS Crystal Report Conversion Wizard

Choose a Data Source

The Conversion Wizard needs access to a valid data source in order to verify the changes made to each report.

Data Source: ProvideX (SOTAMAS90) Configure

User ID: JCN

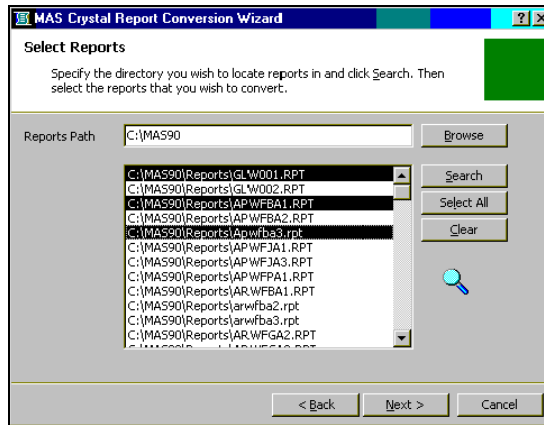
Password: *****

< Back Next > Cancel

Appendix A Converting MAS 90 Crystal Reports from a Prior Version

- At the **Reports Path** field, enter the path, or click Browse and select the directory to search for reports that require conversion. All Crystal Reports that have been previously converted or Crystal Reports that contain the current MAS 90 or MAS 200 version (for example, 3.60) as a keyword will not be selected for conversion.

Click Search to generate a list of reports. Click Cancel to stop the search. You can select individual or multiple reports within the listing to convert. Select the desired report, or press CTRL to make multiple selections. Click Select All to convert all reports within the listing. Click Clear to clear the listing. To complete the conversion, click Next.



Appendix A Converting MAS 90 Crystal Reports from a Prior Version

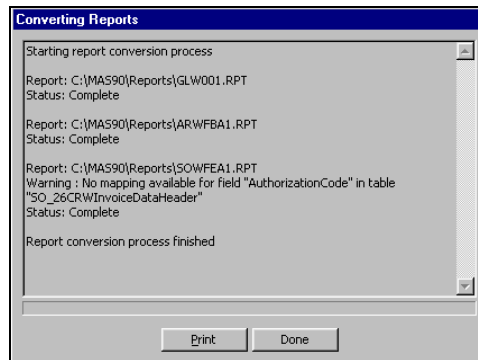
- Click Finish to initiate the conversion process; click Back to return to the previous wizard or screen; click Cancel to exit the wizard.



Note

If a field name used within the report or form no longer exists in the data source, it will be noted on the listing and removed from the report or form. If the removed field is contained in a formula, a Crystal Reports error in printing message will appear when printing.

- Click Print to get a listing of the selected reports and the conversion status of each report.



A

adapters, defined 53

C

CD installation, System Setup 14

checklists

conversion 8

installation 8

printer configuration 11

workstation setup 12

conversion, checklist 8

Crystal Reports

converting 73

installing 32

overview 32

D

Data Access Pack, Setup program 27

DOS environment, installing 13

F

FID0 value, overriding 31

FID0MAP.INI, location 30

G

graphic conventions 6

H

how to use this manual 6

I

installing

checklist 8

Crystal Reports 32

DOS environment 13

from CD 14

MAS 90 8

Novell NetWare 4 49

Novell NetWare 5 49

installing (continued)

onto

Novell NetWare 3 42

Windows 98/Me

Peer-to-Peer 61

PCCharge Payment Server 36

single-user systems 41

Windows environment 13

L

local printers

configuring for Novell NetWare 3 44

defining 44

M

MAS 90

installing 8

starting 31

N

Novell NetWare 3

checklists

overview 46

Windows 98/Me 47

configuration 42

configuring

local printers 44

spooled printers 43, 44

determining NetWare level 45

hard disk space 46

required patches 45

rights 42

setup 42

troubleshooting 45

Novell NetWare 4

checklists, Windows 98/Me 50

installing 49

overview 49

Novell NetWare 5

checklists, Windows 98/Me 50

installing 49

overview 49

A**B****C****D****E****F****G****H****I****J****K****L****M****N****O****P****Q****R****S****T****U****V****W****X****Y****Z**

O

- ODBC Workstation Setup 29
- overview
 - Crystal Reports 32
 - PCCharge Payment Server 36

P

- PCCharge Payment Server
 - installing 36
 - manual, accessing 39
 - overview 36
 - support 40
 - upgrades 40
- printer configuration checklist 11
- printing procedures
 - Windows 98/Me Peer-to-Peer 64
 - Windows NT/2000 network 56
- protocols, defined 53
- PVXFID0 algorithm 30

S

- services, defined 53
- session tracking 29
- single-user installations 41
- spooled printers, configuring for Novell NetWare 3 43, 44
- Supported Platform Matrix 8
- System Setup CD installation 14
- System Startup
 - DOS environment 13
 - overview 13
 - Windows environment 13

W

- Windows 98/Me
 - operating requirements 41
 - setup procedures 41
 - single-user installation 41
- Windows 98/Me Peer-to-Peer checklists
 - server 66
 - workstation 67

Windows 98/Me Peer-to-Peer checklists (continued)

- installing 61
- MAS 90 workstation setup 63
- network connections, establishing 62
- procedures
 - networking 61
 - printing 64
 - setup 61
- Windows environment, installing 13
- Windows NT/2000 Network checklists
 - Windows 98/Me workstations 58
 - Windows NT/2000/XP workstation 59
- drive mappings 57
- printer setup 56
- Windows NT/2000 Professional Network
 - networking with Windows 98/Me 53
 - setup procedures 52
- Windows NT/2000/XP Peer-to-Peer checklists
 - server 70
 - workstation 71
- drive mappings 69
- time zone synchronization 70
- Windows NT/2000/XP Workstation
 - printer setup 41
 - single-user installation 41
- workstation ID
 - assigning 30
 - overview 29
- Workstation Setup Program
 - location 22
 - overview 21
 - running 22
- workstation setup, checklist 12

A

B

C

D

E

F

G

H

I

J

K

L

M

N

O

P

Q

R

S

T

U

V

W

X

Y

Z