



**SAGE MAS 90 SAGE MAS 200**

**INVENTORY MANAGEMENT**

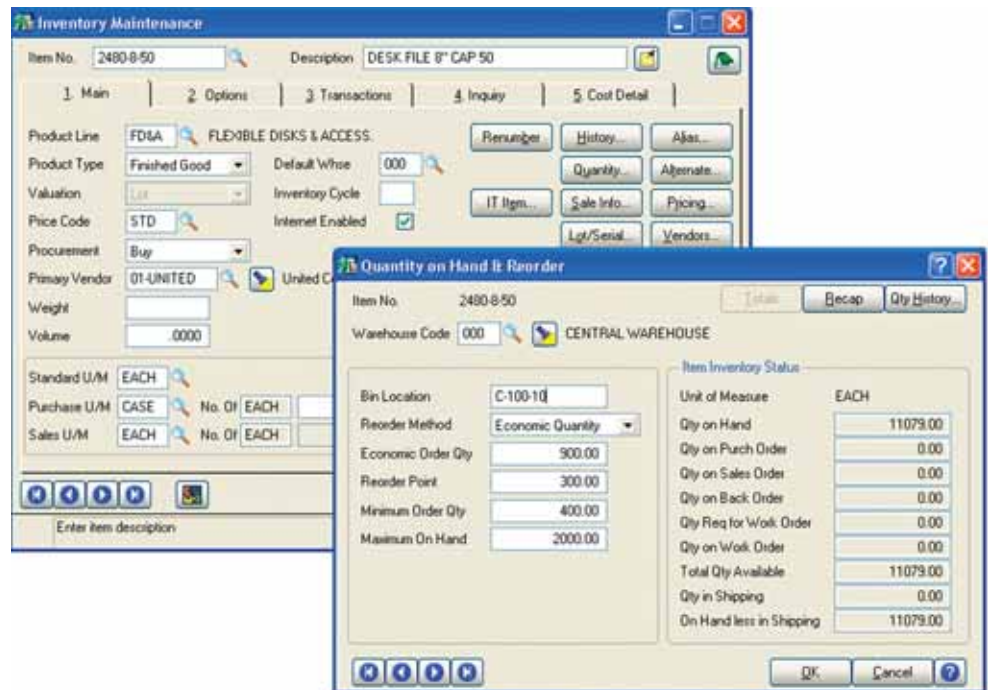
**REPORTS**

- Transaction Journal
- Inventory Price List
- Inventory Backorder Fill Report
- Inventory Stock Status Report
- Automatic Cost/Price Change Register
- Inventory Reorder Report
- Sales Promotion Application Register
- Inventory Valuation Report
- Sales Promotion Report
- Inventory Turnover Report
- Inventory Valuation Report by Period
- Daily Transaction Register
- Inventory Sales Analysis
- Physical Count Worksheet
- Inventory Sales History Report
- Physical Count Variance Register
- Inventory Issue History Report
- Sales Kit Listing
- Detail Transaction Report
- Sales Kit Where-Used Listing
- Inventory Trial Balance Report
- Costed Sales Kit Report
- Inventory Negative Tier Report
- Inventory Item Listing
- General Ledger Posting Recap
- Inventory Labels
- Item Masterfile Audit Report
- Inventory Memos
- Receipts History Report

**BUSINESS ALERTS**

Business Alerts is an additional module that monitors your Sage MAS 90 or 200 database and can send e-mail notifications to appropriate staff, customers, or vendors based on specific business events. Available predefined Inventory Management alerts are:

- New Inventory Item Notification
- Available Quantity Below Reorder Point
- Inventory on Hand Less than Zero



Precise control and safeguarding of inventory is an essential task for a successful, well-organized company; businesses require timely and accurate information on inventory location, movement, and valuation. The Inventory Management module for Sage MAS 90 and Sage MAS 200 ERP systems provides data pertaining to the receipt of goods, the movement of goods within or between locations, the sale, removal, or other disposition of goods, kitting capabilities, lot and serial tracking, and the precise valuation and status of goods remaining in inventory at any point in time. When used in conjunction with other Sage MAS 90 and 200 modules, Inventory Management is the cornerstone of an effective manufacturing or distribution solution.

Inaccurate inventory counts can cost you sales and delay shipments past the promise date. Out-of-stock items as well as overstocked items in inventory can be devastating to your business. Additionally, an overstated or understated inventory valuation can result in incorrectly reported assets within your financial statements.

Inventory Management offers comprehensive reporting capabilities to keep you on top of inventory status. Generate reports on item pricing, stock status, detailed sales history, backorder information, reorder points and recommendation, valuation, turnover, sales analysis, and much more. And adding the Business Alerts module can keep your staff on top of quantity changes to critical inventory items, to keep stocking levels precisely where you want them. Properly used, the Inventory Management module can help bring about the formulation of new or improved purchasing policies, sales policies, pricing methods, and even enhanced customer service. Inventory Management could also provide your company with an additional edge over competitors who are unable to access the same strategic information.



# Sage MAS 90 and Sage MAS 200

## Inventory Management

*"We can pull up any part on the screen and know how long it's been in the warehouse. That makes it much easier to know when to reorder. Inventory aging reports now tell us when we have too much of a particular item in stock. These insights are essential in a business like ours, where dead inventory represents very real costs in storage, maintenance, and taxes."*

John Cimini, Office Manager  
Consolidated Transmission Parts

### FEATURES

#### Multiple Warehouses

A separate inventory of each inventory item can be maintained at any number of locations. In addition, items can be transferred between warehouse locations.

#### Physical Count

Inventory can be physically counted without interrupting the normal Sales Order Entry process. Physical Count Worksheets simplify the physical count process and speed data entry. A variance report provides data that highlights the difference between current physical count and the count shown in the system.

#### Alias Item Numbers

Alias items provide the ability to assign alias item numbers to each customer and vendor. Alias items permit the user to type alias item numbers in the Purchase Order and Sales Order modules, allowing the system to find regular item records and stock status. All alias item numbers print on invoices and purchase orders.

#### Sales Kit Processing

Groups of items priced and sold together can be defined as sales kits. A single-level bill of components can be defined for each kit. The Sales Kit Listing, Sales Kit Where-Used Listing, and Costed Sales Kit Report are available. Sales kits can be entered during order entry to automatically explode the components.

#### Comprehensive Pricing and Costing Methods

Detailed price schedules based upon customer price levels and the quantity sold can be created for each item. Prices can be calculated as a discount of the standard price or markup of the standard cost, and can be calculated based on standard cost, average cost, LIFO, FIFO, and lot/serial methods. Sales promotions and customer contract pricing may also be established. Standard, last, and average costs are maintained for each item regardless of costing method.

#### Transaction History

A detailed history of all inventory transactions can be retained indefinitely, and a transaction audit trail can be produced for a specified date range.

#### Bar Code Printing

Inventory labels with bar codes can be printed for inventory items. Both Code 39 and Code 128 bar code formats are supported for a variety of printers.

#### Reordering

The Reorder Report lists items of stock on hand that has reached a specified reorder point (which is unique to each item at each location). The suggested reorder quantity can be based upon an economic order quantity, maximum stock quantity, or reorder point.

#### Commission Method

Commission on each item can be calculated using different methods. Commissions can be based upon percentage of price, percentage of cost, or percentage of gross profit plus a base commission amount.

#### Item Delete/ Re number/Merge

This program allows you to delete, renumber, or merge existing item numbers using wildcard characters to mask selected groups of item numbers. All changes are recorded in a Delete/Re number/Merge log. There is an Item Masterfile Audit Report that allows you to review any changes, deletions, or additions.

#### Drill-Down From Item Inquiry

When viewing an inventory item in sales history, you can see all the invoices that contain the items sold to a particular customer. The list shows the invoice number with the invoice date that contains the items purchased. From the list of invoices, you can select an invoice and drill down to the invoice line item to see the details of the quantity and price of the item that was sold.

#### Unlimited Vendors Per Item

The lookup displays the last purchase price of an item, the lead time (based on the date of the last purchase order compared with the date of the last receipt), and available quantity price discounts. You can even sort vendors by last cost and by lead time.

#### Warranty Tracking

The warranty expiration date for items, optionally calculated on shipment or invoice date, prints on invoices and packing slips for your customers. Warranty history is maintained and automatically recalled when items are returned using the integrated Return Merchandise Authorization module.

#### Lot/Serial Tracking

Items may be tracked by lot or serial number. This helps improve quality while providing an audit trail to the source purchase order or work order.

**Blytheco - The Premier Sage Software Business Solutions Provider • National Presence, Local Touch • 1.800.425.9843 • www.blytheco.com**



56 Technology Drive • Irvine, CA 92618-2301 • 800-854-3415 • www.sagesoftware.com

©2005 Sage Software, Inc. All rights reserved. The Sage Software logo and the Sage Software products and service names mentioned herein are registered trademarks or trademarks of Sage Software, Inc., or its affiliated entities. All other trademarks are the property of their respective owners.

5086569 09/05 05-3803/0905