



SAGE MAS 500

MICROSOFT PROJECT LINK

BUSINESS INSIGHTS

Sage MAS 500 takes inquiry, drill-down, monitoring, and data analysis to a whole new level with out-of-the-box business intelligence tools, including Business Insights Analyzer, Business Insights Explorer, Alerts, Crystal Reports®, Web Reports, and integration with desktop productivity tools.

PROJECT ACCOUNTING REPORTS

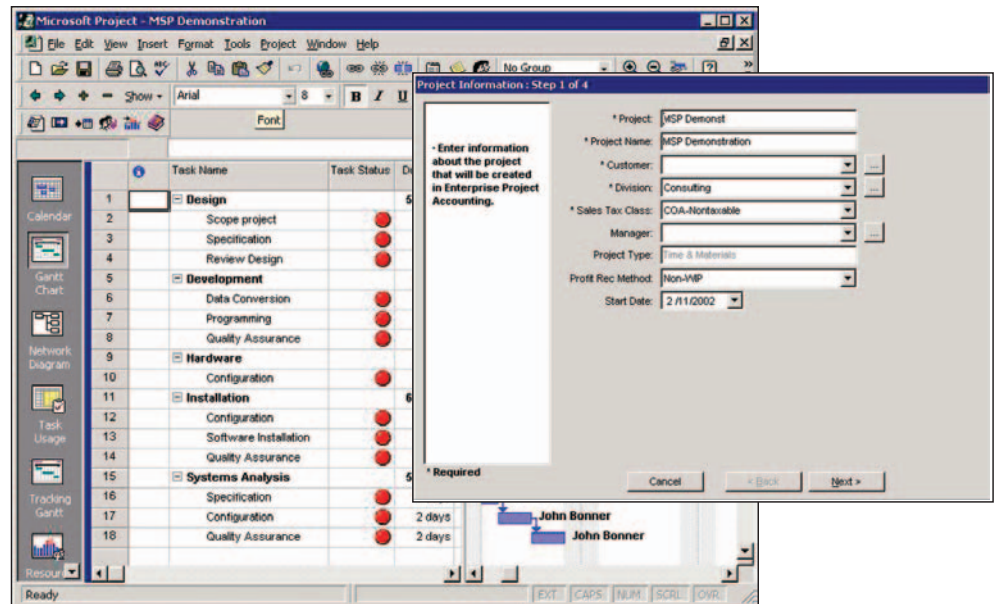
- Project Charge-ability
- Resource Utilization
- Project and Team Roster List
- Resource List
- Job Title List
- Timesheet and Expense Approval

MICROSOFT PROJECT REPORTS

- Project Summary
- Critical Tasks
- Milestones
- To-Do Lists
- Overallocated Resources
- Resource Usage

SAGE MAS 500 SOLUTIONS

- CRM and E-business
- Financials and Project Accounting
- Distribution and Manufacturing
- Human Resources and Payroll
- Customization and Integration
- Business Intelligence



Microsoft Project Link Facilitates a Streamlined, End-to-End Project Management Solution

In recent years, the software industry has seen the emergence of a variety of solutions designed to help companies better manage projects. Notably, the majority of these systems can be grouped into one of two categories—project accounting or project management. In the simplest terms, project management software aims to deliver projects on schedule. Project accounting solutions strive to deliver projects on budget.

Unfortunately, while many companies have successfully implemented project accounting or project management solutions, most have not been able to get the systems to work together. Instead, project managers and finance departments have resorted to communicating through e-mail, paper reports, and home-spun spreadsheets.

To solve these inefficiencies, Sage Software proudly offers the Sage MAS 500 ERP Microsoft Project Link module, enabling you to integrate Microsoft Project, a leading project management solution, with Sage MAS 500 ERP. Through the synthesis of these products, Microsoft Project Link is able to facilitate seamless information workflow. By passing data between these two systems, project managers are kept informed of changes or potential overruns, while the finance department simultaneously knows when to generate invoices. The module's versatility is underscored by its ability to update a diverse range of project costs and time with a single data entry.

