

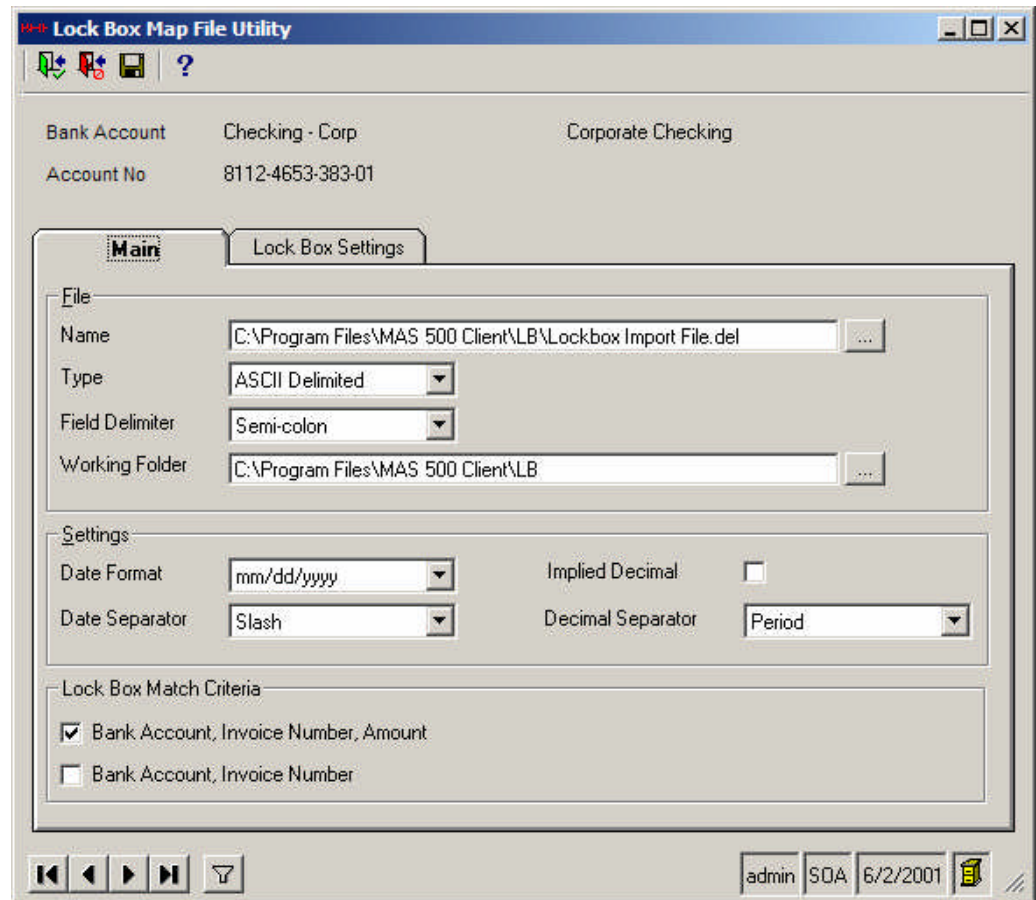
AR Lockbox Autocash Processing for Sage MAS 500®

Built with Sage MAS 500 Application Framework

- Standard Toolbar & Form Controls
- Standard Navigator Lookup
- MAS 500 Office Integration
- Extends Functionality without changing standard product
- Customizer-enabled for even greater extension by consultants and customers
- All Reports and Documents are Crystal Reports
- Compatible with major and interim releases
- Easy Installation and Setup

Sage MAS 500 Add-on Solutions from BHE:

- Credit Card/ACH Processing
- Quality Control and Lot Characteristics
- Deferred Revenue
- Chargebacks & Write-offs
- Prepaid Expenses
- AP EFT
- AP Positive Pay
- AR Customer Refunds
- AR Auto Application
- Auto Shipping and Receiving
- Auto Inventory Allocation
- Multi-Divisional GL Balancing
- eRequisitions
- Work Order Import
- Multi-Part Production Entry
- PA Extensions
- Exchange Rate Update



Import and Process AR Cash Receipts Automatically

AR Lockbox Autocash for Sage MAS 500 provides an automated means for importing and applying Cash Receipts from an external source such as a Bank Lockbox file.

Using a convenient mapping utility, multiple formats can be defined for different bank accounts. Files can be delimited or fixed length and Matching criteria can be established per map file to control when a payment should be applied or put on-account unapplied. This allows the user to control whether to apply only when paid in full, or apply partial payments as well. Payments not matching the criteria are placed on account.

Built with the Sage MAS 500 Framework, AR Lockbox Autocash provides the same rich graphical and ease-of-use features found throughout MAS 500. Integration with MAS 500 is achieved with Customizer, extending functionality without modifying it.



AR Lockbox Autocash Processing for Sage MAS 500®

Easy Mapping Utility

The ability to define the layout of each import file is done through the built-in mapping utility. This allows the user to identify which fields are being imported, their position or sequence in the import file, and whether the field is required.

Speed up the Application of Payments

Using the AR Lockbox Autocash module, the application of payments to invoices is automatic, saving hours of manual entry and ensuring greater accuracy. The option to automatically post the batch speeds the process even more.

Auto Cash Import

Bank Information

Bank Account: Corporate Checking

Account Number:

Posting Date:

Map Utility...

Options

Allow Write-Offs

Split Batches into Applied / Unapplied Payments

Post Applied Payment Batches

Post Unapplied Payment Batches

Take Write-offs

Choose to have the system generate write-offs when shortpays result in balances that fall under the customers write-off limit.

Split Batch

Choose to create two batches - one for applied and another for unapplied.

Lock Box Map File Utility

Bank Account: Corporate Checking

Account No:

Main | **Lock Box Settings**

Field Name	Data Type	Record	Start Pos	End Pos	Default	Require
Invoice Number	Integer	Detail	12	21		<input type="checkbox"/>
Customer	Character	Detail	32	34		<input checked="" type="checkbox"/>
Payment Reference	Character	Header	37	46		<input checked="" type="checkbox"/>
Payment Amount	Decimal	Header	8	17		<input checked="" type="checkbox"/>
Tender Type	Character	Header	0	0	Check	<input checked="" type="checkbox"/>
Payment Date	Date	Header	0	0		<input type="checkbox"/>
Comment	Character	Header	0	0		<input type="checkbox"/>
Currency	Character	Header	0	0	USD	<input type="checkbox"/>
Detail Amount	Decimal	Detail	22	31		<input type="checkbox"/>

Header Row Indicator: Detail Row Indicator:

admin SOA 6/5/2004

Map Multiple Bank Accounts

The flexible mapping capability allows for multiple import files to be defined for different bank accounts. The order and position of each field within the import file can be defined as well.

Define Matching Rules

The values that must match in order for a payment to be automatically applied to an invoice or invoices can be established for a map file, such as amount.



The Premier Sage Software Business Partner

Corporate Offices

Orange County, California
23161 Mill Creek Drive
Laguna Hills, California 92653
Phone: (949) 583.9500
Toll Free: (800) 425.9843
Fax: (949) 583.0649

www.blytheco.com

Atlanta, Georgia
1100 Johnson Ferry Road, Ste. 450
Atlanta, Georgia 30342
Phone: (404) 841.6240
Toll Free: (800) 455.1368
Fax: (404) 841.6243

solutions@blytheco.com

Sage Software Business Partner of the Year

Complete Sage Software Solutions

Sage MAS 500 • Sage MAS 200 • Sage MAS 90
Sage BusinessWorks • Sage SalesLogix CRM • ACT! by Sage
Sage ABRA HRMS • Sage FAS • Sage MIP Fund Accounting & Fundraising

Offices in these cities & states:

Atlanta, GA • Chicago, IL • Los Angeles, CA • Orange County, CA • Tampa, FL
Colorado • Missouri • New Jersey • Ohio • Oklahoma • Pennsylvania • Tennessee
Texas • Washington

National Presence - Local Touch



Master Developer