

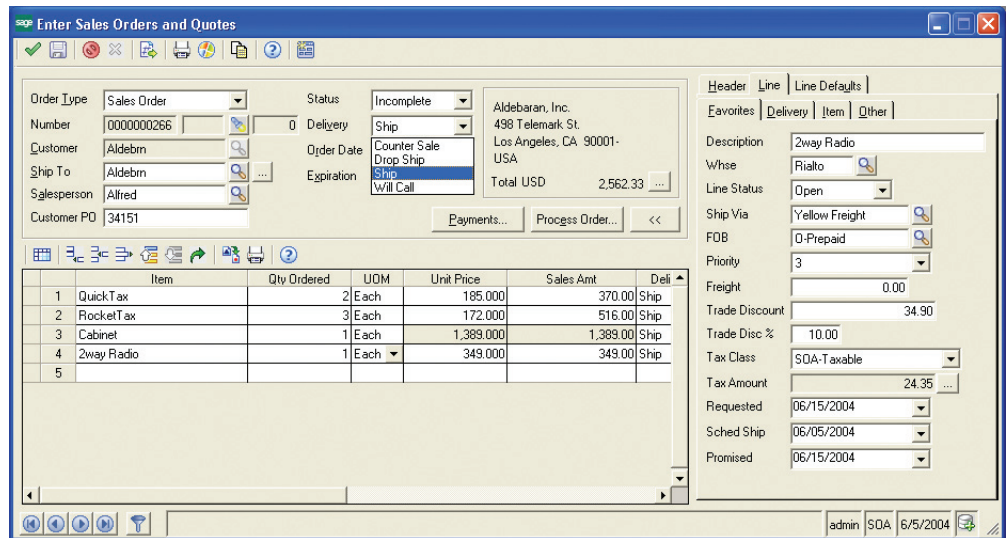


SAGE MAS 500

7.0 ENHANCEMENTS

SIGNIFICANT NEW FEATURES AND BENEFITS

In an age where new trends and rising costs can develop overnight, you expect more out of your business system than ever before to quickly solve issues and gain every possible advantage. With the 7.0 release of Sage MAS 500, Sage Software has raised the bar again with a focus on two overlying themes: streamlined distribution workflow and unprecedented access to information. These key areas further simplify the ease of use that Sage MAS 500 customers have come to know and expect, while adding functionality that makes you more agile and responsive in today's fast-paced, service-oriented economy.



Sage MAS 500 version 7.0 provides a customizable grid-based order entry screen that allows organizations to maximize user productivity while still offering access to advanced features.

Streamlined Distribution Workflow

Sage MAS 500 ERP users will experience a significant increase in productivity through an improved sales order workflow in version 7.0. A new streamlined grid-based entry provides a more heads-down approach to order processing. Sage MAS 500 7.0 will allow organizations to tailor the sales order entry interface to match their internal procedures and guidelines through a new built-in customization interface where fields can be added and moved by company, group, user, or site—offering complete flexibility and control.

As an extension to sales order processing, version 7.0 has fortified the pick, pack, and ship capabilities of Sage MAS 500 with new features such as auto-generating serial numbers and shipments as well as an improved StarShip interface that eliminates the need for warehouse personnel to manually enter package dimensions. These features and many more will provide both distributors and manufacturers the tools they need to increase profits and maximize their most valuable resource—their employees.

Sales Order Entry Enhancements

STREAMLINED DROP-SHIP PROCESSING

The entire drop-shipment process within Sales Order is streamlined in Version 7.0. You will be able to select the Purchase-from Vendor in Sales Order Entry and can both acknowledge and pick drop-ship orders. A new multi-purpose Drop Ship report will provide timely data about your drop shipments.

GROSS PROFIT DISPLAY

Version 7.0 will display the calculated gross profit for each line on an order, and can warn users when profit dips below your acceptable level. You can elect to use the Average, Last, Standard, Replacement, or Landed Cost as the basis for the calculation.

ORDER COPY

Sage MAS 500 7.0 adds the ability to copy sales orders, allowing you to create a new order by copying from an existing order. An option allows you to re-price the order to ensure you're charging the customer the proper amounts.

PROMOTIONAL PRICING

Promotional pricing will allow you to configure a date-specific promotion by Item, Warehouse, Sales Product Line, Purchase Product Line, Product Price Group, Primary Vendor, and Product Category. Designate either fixed or percentage-based discounts that are established by price or the quantity ordered.

REAL TIME INVENTORY

For busy distributors, batch processing of transfer shipments, customer shipments, and customer returns slows down the order cycle. Version 7.0 will remove batch processing from these functions. This will allow you to more quickly and easily enter and update sales transactions resulting in accurate inventory levels throughout the day.

CUSTOMIZED ORDER ENTRY

Customize Sales Order Entry screens by user, group, company, or site—choose which fields should be included or excluded from the primary line item grid entry, as well as which fields should be delegated to the miscellaneous tab. Plus, columns within the grid entry can be frozen to help you retain visible context as you scroll from left to right.

CREDIT MANAGEMENT

Managing customer credit is an important tool for distributors. Sage MAS 500 7.0 adds a new optional credit check routine that serves to place orders on credit hold as well as lift credit holds from orders for customers with resolved credit issues. The picking process will also identify orders on hold that cannot be picked.

STREAMLINED PICKING

Automatically generate shipments from picking, and skip the picking confirmation and shipment editing tasks by completing edits for lots, serials, and bins from within picking. Manage manual or automated product substitution within picking. Receive notifications of ship-complete rule violations for items or customers while still in picking. Short picks will be readily identifiable to aid decision-making during the picking process.

SHORTEN SERIAL, BIN, AND LOT ENTRY

Simplify your data entry process and reduce the margin for operator error. You now have the ability to enter a range of alphanumeric serial numbers, or to continue using single serial numbers. If you're looking to expedite repetitive entry against the same bin or lot number, the 7.0 release retains the values as the default during your work session. Ranged entry also extends to the manufacturing modules in Sage MAS 500.

RAPID-ENTRY PACKING AND SHIPMENT PROCESS

Capture more information faster in Edit Shipments. In moments, you can tally the boxes; the quantity and item descriptions for each box, their tracking numbers, and easily move items between boxes and shipments. The data also serves your packing list and bill of lading printouts.

IMPROVED STARSHIP INTEGRATION

Eliminate the need for warehouse personnel to manually enter package dimensions during Edit Shipments. With the new carton table feature, you can predefine the dimensions of all your standard packing containers such as boxes, cases, and pallets, and the dimensions will automatically feed into StarShip. You can also flag hazardous materials through the entire distribution process, from order processing to StarShip.

New Warehouse Management Module

A new Warehouse Management Module debuts in version 7.0. The new module focuses on tracking information and processes in the warehouse and includes some features currently part of Inventory Management. The combined feature set of Warehouse Management includes:

- Zones in warehouse
- Assign bins to zones for a more efficient warehouse layout
- Reduce the number of trips to bins by pickers
- Enable zones through Sales Order Picking
- Track quantity by bin
- Three-step transfers—select transfer order shipments with sales order shipments for streamlined processing.

New Business Insights Explorer Module

Building on the success of the popular Business Insights Analyzer module, Sage MAS 500 introduces the Business Insights Explorer. As the newest member of the Business Insights suite, Business Insights Explorer takes inquiry, drill down, drill around, and analysis to a whole new level. You'll immediately reap benefits from its extensive set of usability and customization features.

PREVIEW

With the Preview option, you can view key information about a specific entity such as customer or vendor, plus related transaction header information such as invoices, vouchers, orders, or projects. Filters can also be applied to any view, restricting the data displayed according to user preferences. By selecting a customer, for example, the context of the related view will automatically change to only show the rows that apply to that customer. Sage MAS 500 is bundled with a series of pre-defined preview relationships, including customers, vendors, items, warehouses, projects, work orders, and many more.

DRILL INTO

As an extension to the Preview option, the Drill Into option allows you to drill around data related to the original records, and change the primary view and context of Business Insights Explorer to a new set of views. At the same time, context (for example, the specific customer) is passed from the original starting point to the new set of views as a filter. For instance, a customer service agent receives a call from a customer regarding a recent transaction. The agent can Drill Into the customer's recent shipments or invoice payments. When the specific invoice is located, the agent may need additional information relating to that invoice such as the payments applied to it. This can be accomplished by Drilling Into the invoice to find applications against that invoice.

Another powerful feature of the Drill Into option is the ability to navigate to a related view that contains custom preferences and pre-defined filters. A good example is a view that lists orders placed in the last 30 days. This customized view can then be saved for future use and quick navigation when looking at any customer.

ANALYZE

Now you have the ability to organize, graph, and format summarized information within the Sage MAS 500 system. The new Business Insights Explorer module is tightly integrated to the Business Insights Analyzer module that was introduced in version 6.3, allowing you to conduct a more detailed study.

Contextual mappings have been configured within both Business Insights Explorer and Business Insights Analyzer that allow you to jump directly to specific Analyzer views. In addition to the direct link with Analyzer, custom filters are passed to Analyzer, forcing its engine to maintain the original Business Insights Explorer context.

MANAGE

The ability to act on information quickly is a critical advantage for any business. With the task management options provided by Business Insights Explorer, you have an easy mechanism for quickly accessing key Sage MAS 500 tasks for the entity being displayed. Each view contains a set of related tasks. For example, when viewing a customer, the tasks for updating the customer information or creating an order are readily accessible from the same view.

PERSONALIZE

The customization and personalization features originally pioneered with Business Insights Analyzer have continued with Business Insights Explorer. You have the same options for sorting, grouping, reorganizing, and renaming columns within the grid in addition to saving filtered views for future use. Uniquely, custom views can be used within the Explore function so that you can leverage them from other related views for navigational purposes.

Manufacturing Improvements

PHANTOM ROUTING SUPPORT

The number-one request from Sage MAS 500 manufacturing customers was to support phantom routings and bills of material—and Sage Software delivers! A phantom routing represents an item that is physically built, but rarely stocked, before being used in the next step or level of manufacturing. Sage MAS 500’s MRP logic will drive requirements straight through the phantom items to its components to facilitate the use of common bills of material for engineering and manufacturing.

NEW MRP FORECAST DEMAND SMOOTHING PROCESS

This new process gives you the powerful ability to forecast projected demand over various inventory periods through one of six different methods. You’ll forecast product sales in one set of easily defined business periods, while using the data to drive MRP and production in a set of shop floor or production facility working periods. The six smoothing methods include Daily, Weekly, Monthly, Quarterly, Annually, and Planning.

ITEM AND WAREHOUSE COSTING

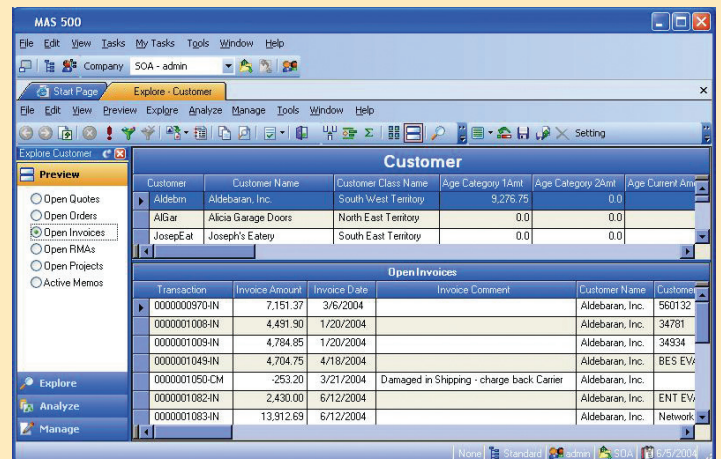
Users will have the ability to mark multiple item and warehouse combinations as a standard routing for costing purposes using routing maintenance. It will take into consideration the different efficiencies that may exist within the various warehouse locations such as labor rates, raw materials, shipping costs, and available equipment.

TimeSheet Professional Enhancements

The 7.0 release includes Sage TimeSheet as part of the standard Sage MAS 500 package. This powerful time and expense application provides an alternative for the current eTimesheets application, so you can choose the time-tracking application that best meets your business practices. eTimesheets will continue to be included with Sage MAS 500. The following features highlight Sage TimeSheet:

ENHANCED EXPENSE TRACKING

- Resources now have the ability to enter expenses directly into a separate Expense Sheet View entry grid without loading a dialog from the time entry view. The expense sheet is similar to a spreadsheet, where the rows represent tasks and the columns represent dates. You can expand a task to view the expense codes (or expense groups) associated with the task. The intersection of each expense code row and column forms a cell to enter expenses.
- Organizations can leverage the Sage TimeSheet expense approval process to track and manage expense sheets separately from time sheets. This is convenient if your organization finalizes expenses and payroll for employees at different times. For example, approving employee time sheets occurs on a weekly basis but expense sheets on a monthly basis.



The Business Insights Explorer Preview option allows users to view related transactions from a secondary grid by passing context from the primary grid such as customer or vendor.

