



Your business in mind.



## SAGE MAS 500

## PRODUCT CONFIGURATOR

### BUSINESS INSIGHTS

Sage MAS 500 takes inquiry, drill-down, monitoring, and data analysis to a whole new level with out-of-the-box business intelligence tools, including Business Insights Analyzer, Business Insights Explorer, Alerts, Crystal Reports®, Web Reports, and integration with desktop productivity tools.

### REPORTING FEATURES

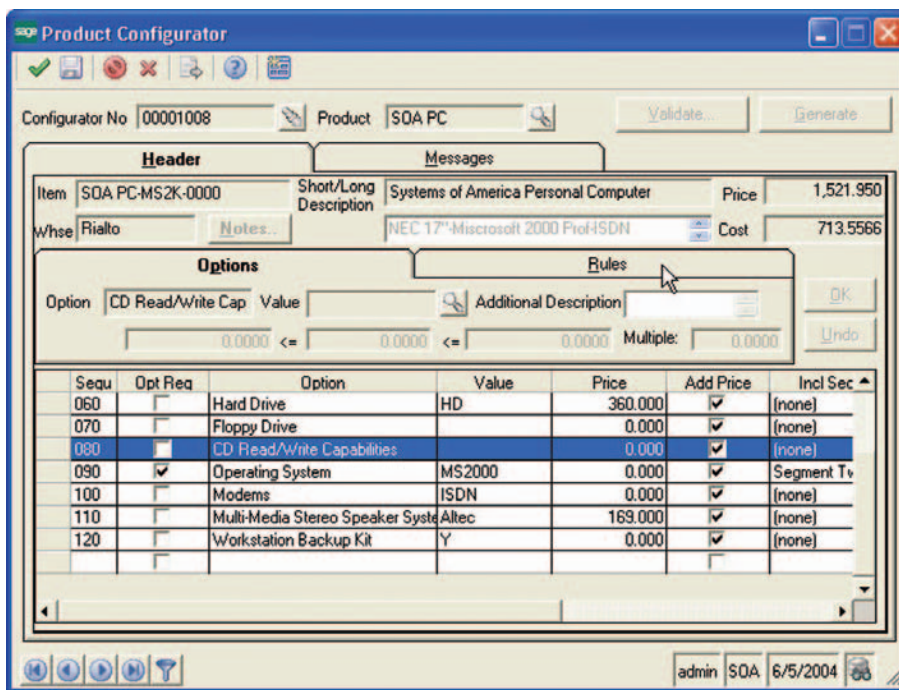
- Maintain custom form layouts for printed forms.
- Tailor forms to your organization's design requirements.
- Export all report data to an external file. Data types supported include ASCII text, delimited, Excel, Lotus 1-2-3, XML, PDF, HTML, RTF, or Microsoft Word.
- Output any report to the screen, a printer, or a variety of file formats.
- Create customized, presentation-quality reports through Crystal Reports software.

### REPORTING FEATURES

- Product Definition Report
- PC Options and Values Listing
- PC Item Where Used
- PC Module Options Listing
- PC Options Where Used

### SAGE MAS 500 SOLUTIONS

- CRM and E-business
- Financials and Project Accounting
- Distribution and Manufacturing
- Human Resources and Payroll
- Customization and Integration
- Business Intelligence



### Advanced Product Configurator for Distributors and Manufacturers

Sage MAS 500 ERP Product Configurator module was designed for use in either distribution or manufacturing environments. Customer service personnel benefit from an easy-to-use interface for feature/option selection, and integration with Sales Order Entry.

This advanced solution is easy to set up and maintain. The intuitive user interface helps the user configure base products quickly using a double mouse-click or search function to choose pre-configured options for each customer order.

Product Configurator builds new parts by starting with a base item and adding features or options to it. New items can be created on the fly using customized item masks, new long and short item descriptions, and other options.

Finished configurations contain unique routings and bills of material built during the configuration process. Product Configurator also builds the item cost and suggested price.

Popular configurations are saved and reused as standard parts. All configurations are based on standard rules that limit or require certain features or options if another feature or option is selected. Final configurations can be validated to make sure that the final item can be produced.

**Blytheco** LLC  
 Corporate Offices  
 Orange County, California  
 23161 Mill Creek Drive  
 Laguna Hills, California 92653  
 Phone: (949) 583.9500  
 Toll Free: (800) 425.9843  
 Fax: (949) 583.0649  
 www.blytheco.com

The Premier Sage Software Business Partner

Atlanta, Georgia  
 1100 Johnson Ferry Road, Ste. 450  
 Atlanta, Georgia 30342  
 Phone: (404) 841.6240  
 Toll Free: (800) 455.1368  
 Fax: (404) 841.6243  
 solutions@blytheco.com

### Sage Software Business Partner of the Year

Complete Sage Software Solutions  
 Sage MAS 500 • Sage MAS 200 • Sage MAS 90  
 Sage BusinessWorks • Sage SalesLogix CRM • ACT! by Sage  
 Sage ABRA HRMS • Sage FAS • Sage MIP Fund Accounting & Fundraising

Offices in these cities & states:  
 Atlanta, GA • Chicago, IL • Los Angeles, CA • Orange County, CA • Tampa, FL  
 Colorado • Missouri • New Jersey • Ohio • Oklahoma • Pennsylvania • Tennessee  
 Texas • Washington

National Presence - Local Touch



# Sage MAS 500

## Product Configurator

*"The Product Configurator module tells us exactly what to manufacture, so that everything can be built without paper. Because it's a visually based system, it eliminated about 70,000 work orders, drawings, and routing documents that had been sent to the shop each year."*

Craig Neuhardt  
Vice President of Manufacturing  
Power Curbers, Inc.

### Options

Engineers can easily set up and maintain features and options.

- Engineers choose whether an option, such as color, is displayed during configuration. Options may or may not be required. Engineers also choose whether or not they want to display the price, short description, or long description during configuration.
- Two options or values may be added to the item code, as segments, to identify an item as being new.
- Options may be tied to a configuration rule. For example, require (option) color if (option) fabric is selected.
- Rules are user-defined to require or skip a certain option if another is either selected or omitted. Users can also enforce the opposite of any defined rule.
- Options may have virtually unlimited values. For example, the option "color" may include values for blue, light blue, red, pink, black, etc.
- Values may also be linked to options using configuration rules. For example, require (option) arms if (option) color (value) red is selected.
- One value may be set as a default for each option.
- Values may be linked to multimedia such as audio, video, bitmaps or TIF images, and CAD drawings. The multimedia options will change as the user builds the final configuration. For example, when configuring a chair, the image may show a black chair but when the user selects the red value for the color option the image will change to show a red chair.
- Each option and its values are linked to a unique routing and bill of material that is used to build a configured routing and bill of material for new items.
- The first level bill of material and configuration options can optionally print on quotes, order entries, and acknowledgements.

### Creating New Items

Product Configurator is very useful for building items on the fly from base models.

- Configured item IDs may include up to four item segments. The first segment uses the base model ID. This ID is set up in inventory as a standard part. The second and third segments can include option and/or value descriptions. The fourth segment is an item counter that is used to define unique configurations. For example, ChairA-Red-Wheels-00000000001.
- Configured items may be up to 30 characters long (and can include dashes or other segment separators).
- Product Configurator may be integrated with manufacturing and sales orders.
- Users can select the base item from inventory and choose each option that applies to the item.
- Product Configurator not only configures the new item ID, cost and suggested price, but it also creates a new price sheet for each unique configuration. This price sheet is stored in Sage MAS 500 and can be reused if the same configuration is made in the future.

### Base Item

Configuration data entry personnel can quickly build new items from customer specifications.

- Base items may be configured through the product configuration activity or through Sales Order Entry.
- Product Configurator is also useful for configuring routings which, can be converted to part estimates, customer quotes, and work orders.
- When configuring an item to meet customer specifications, the base item is chosen from inventory and each option and value is selected from an easy-to-use grid.
- Final configurations are stored and reused if the same item is configured again.
- Distributors can use Product Configurator as an item selection tool or to group items together for a customer's order.

### Formulas and Calculations

Options may be defined as ranges and used in calculations.

- Define valid ranges for an option such as length so that valid configurations fall within a range. For example, the length can be one to eight inches and defined to four decimal places. A length of 10 inches is not valid, but a length of 5.0025 is valid.
- Create formulas using basic arithmetic expressions to calculate square feet (length x width), volume (length x width x height), diameters, and other formulas.
- Use formulas to determine material requirements and item costs.

**Blytheco - The Premier Sage Software Business Solutions Provider** • National Presence, Local Touch • 1.800.425.9843 • [www.blytheco.com](http://www.blytheco.com)



56 Technology Drive • Irvine, CA 92618-2301 • 800-854-3415 • [www.sagesoftware.com](http://www.sagesoftware.com)

©2005 Sage Software, Inc. All rights reserved. The Sage Software logo and the Sage Software product and service names mentioned herein are registered trademarks or trademarks of Sage Software, Inc., or its affiliated entities. Crystal Reports is the registered trademark and technology of Business Objects SA. All other trademarks are the property of their respective owners.

5SES020 09/05 05-3849/0905