



Your business in mind.



SAGE MAS 500

ADVANCED MANUFACTURING

BUSINESS INSIGHTS

Sage MAS 500 takes inquiry, drill-down, monitoring, and data analysis to a whole new level with out-of-the-box business intelligence tools, including Business Insights Analyzer, Business Insights Explorer, Alerts, Crystal Reports®, Web Reports, and integration with desktop productivity tools.

REPORTING FEATURES

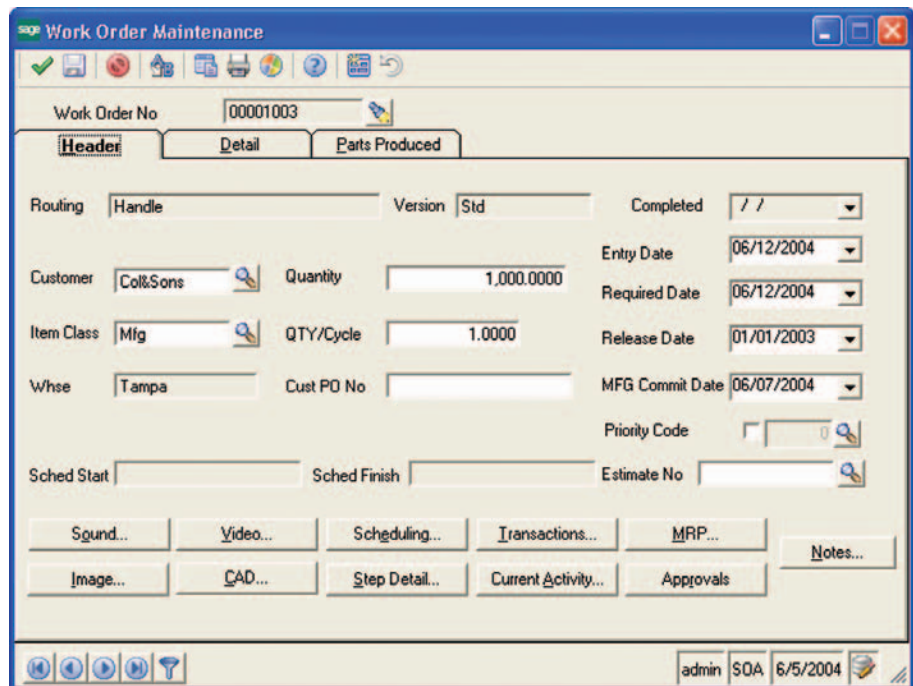
- Maintain custom form layouts for printed forms.
- Tailor forms to your organization's design requirements.
- Export any report data to an external file. Data types supported include ASCII text, delimited, Excel, XML, PDF, HTML, RTF, or Microsoft Word.
- Output any report to the screen, a printer or a variety of file formats.
- Create customized, presentation-quality reports through Crystal Reports software.

REPORTS

- Work Order Completion
- Work Order Printing
- Open WIP
- Job Costing
- WIP Costing
- Labor Efficiency
- Downtime
- Scrap
- Shipment Status (Outside Processing)
- Employee List
- Downtime List
- Scrap List
- Break Time List
- Work Order Status
- Current Activity

SAGE MAS 500 SOLUTIONS

- CRM and E-business
- Financials and Project Accounting
- Distribution and Manufacturing
- Human Resources and Payroll
- Customization and Integration
- Business Intelligence



Advanced Manufacturing Features Provide the Backbone for Production Tracking and Job Costing

The Sage MAS 500 ERP Advanced Manufacturing module includes all of the functionality of the Light Manufacturing/Advanced Kitting module as well as enhanced work orders and labor and production reporting.

The system provides shop floor visibility to your entire enterprise. With a few mouse-clicks customer service can quickly view the status of a customer order without having to interrupt the shop supervisor. Advanced Manufacturing provides instant visibility to see which employees are currently on the clock in any production facility.

The GAAP-compliant job costing system helps you identify which manufactured items are generating the most profit and which items are costing you money. You will be able to identify production bottlenecks and respond in real time to last-minute engineering changes and high-priority orders.

Businesses define operations, machines, work centers, and other options based on their needs as opposed to pre-defined options. This allows you to tailor Advanced Manufacturing to your unique manufacturing environment and corporate business model.

Advanced Manufacturing is especially well suited for assembly, electronics, metal fabrication, machine/equipment manufacturing, and other production environments where work order tracking and labor reporting are essential requirements.



Sage MAS 500

Advanced Manufacturing

"With Sage MAS 500 Advanced Manufacturing, we're going to be more competitive because we'll have cutting-edge software and a better handle on our cost of goods."

Tom Vanneman, CFO
Escient, Inc.

Work Orders

Work orders provide a portal for production management and manufacturing-related activities.

- Work orders may be created quickly from scratch by referencing standard part routings/bills of material and customer sales orders.
- Create a work order from a sales order, on the fly, or create a new work order by copying an existing part routing/bill of material and making changes on a same-as-except basis.
- Multimedia files and CAD drawings may be viewed at both the header and detail levels.
- Backflush labor, overhead, material, or outside costs automatically as production takes place.
- View critical production information, including start dates, manufacturing commit dates, work order status, current log-ins for the job, scheduling data, job cost detail, and labor and outside process transactions.
- Automatically issue costs from a purchase order line to a specific customer or to-stock work order.
- Create and track lot and serialized raw materials, components, and finished goods for improved quality control.

Labor and Production Reporting

Track actual labor times for accurate job costing and labor/production efficiencies.

- Use paper job tickets to track employee times, material issues, and production quantities.
- Back out break times from labor time calculations.
- Print detailed shop travelers to route the production order through the shop floor.
- Track scrap by reason code.
- Integrated routing/bill of material provides time-phased material requirements.
- Track run, setup, and down times by operator.
- Labor efficiency reports highlight labor bottlenecks and employee performance issues.
- Report labor in hours per piece, pieces per hour, or discrete batch depending on production cycles and processes.

Job Costing

Accurate job costing is critical to establishing item prices, profitability and business planning.

- Sage MAS 500 supports GAAP-compliant costing methods including actual (lot), average, standard, FIFO, and LIFO.
- Use standard versus actual cost comparisons to establish and maintain profitable pricing models.
- Advanced general ledger integration provides detailed job-cost tracking and posting options for work in process, cost of goods sold, and production variances.
- A "Cost to WIP" flag allows you to choose whether or not to post work in process to the general ledger for any labor transaction.
- The Projected Inventory Valuation report shows forecasted inventory levels and costs by looking at historical, current, and forecasted transactions.

Outside Processing

Track shipments of parts to vendors for subcontracted operations such as heat treating, assembly, coating, painting, etc.

- Print shipper documentation to accompany shipments to vendors for subcontracted operations.
- Find out how many parts have been shipped to date and how many are still at the vendor for processing.
- Outside processing is integrated with job costing and labor reporting. This provides more accurate job costs and production schedules.
- Automatically issue outside processing costs to work in process when parts are received from vendors.
- When used with the Sage MAS 500 Advanced Planning & Scheduling module, Advanced Manufacturing customers can set up outside process work centers. This is a key part of the scheduling process, since management needs to know how long it will take your vendor to process the parts so they can correctly plan for upstream operations.

Multiple Parts

Flexible production reporting and manufacturing costing features designed specifically for family molds, progressive dies, and other industries with co-products.

- Identify scrap standards and quality control issues to specific parts.
- Backflush different amounts of labor and overhead, material quantities and costs, or outside process costs to each unique part.
- Backflushed labor, material, and outside costs are added only to parts that were actually produced.
- Handles disassembly of parent items into components and raw materials at standard costs.

Business Insights

Analyze and monitor Advanced Manufacturing data and transactions including work orders, costs, quantities, and more.

- Organize, analyze, and graph production assembly information such as component usage, assembly costs, scrap quantities, production times, and more.
- Use the Data Alerts module to monitor Sage MAS 500 when work order quantities, times, costs, or scrap are over or under the standards by a specified percentage. For example, an e-mail alert will be sent when costs are 20% over the standard for a specific work order.
- Data Alerts can be used to notify management when labor entries have excessive down time and when started jobs have excessive down time, which typically results when employees enter data incorrectly or forget to log off jobs at the end of their shift.

Blytheco - The Premier Sage Software Business Solutions Provider • National Presence, Local Touch • 1.800.425.9843 • www.blytheco.com



56 Technology Drive • Irvine, CA 92618-2301 • 800-854-3415 • www.sagesoftware.com

©2005 Sage Software, Inc. All rights reserved. The Sage Software logo and the Sage Software product and service names mentioned herein are registered trademarks or trademarks of Sage Software, Inc., or its affiliated entities. Crystal Reports is the registered trademark and technology of Business Objects SA. All other trademarks are the property of their respective owners.

5SE5018 11/05 05-3848/1105