

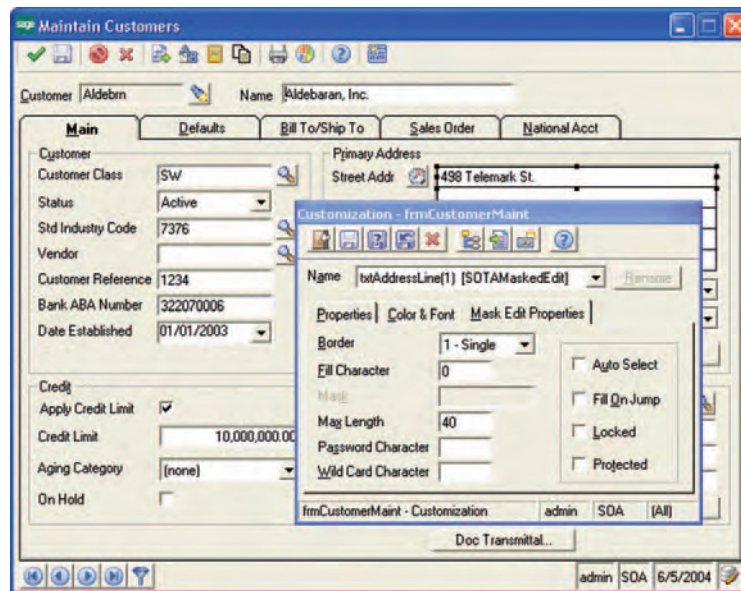


## SAGE MAS 500

## CUSTOMIZER

### CUSTOMIZER OVERVIEW

- Change standard screens and forms to fit your company perfectly.
- Apply custom changes to specific users or across your entire organization.
- Save data entry time by hiding unused fields.
- Maintain data integrity by assigning default values to key fields.
- Capture mission-critical information by creating new fields.
- Save valuable staff time by modifying form controls and field navigation to speed up data entry.



### SAGE MAS 500 SOLUTIONS

- CRM and E-business
- Financials and Project Accounting
- Distribution and Manufacturing
- Human Resources and Payroll
- Customization and Integration
- Business Intelligence

### Improve Efficiency by Customizing Your System

Sage MAS 500 ERP Customizer enables you to easily modify screens and forms to match your specific business process and improve staff productivity. Even if you lack extensive programming knowledge, you can use Customizer to adapt form controls, tab sequences, and more, without changing the source code. This will help you easily transition to future application upgrades.

You can enable business logic, define custom processes, or add new controls or application functionality by using the scripting languages included with Customizer. This powerful feature also offers easy management of customizations through a server-based repository. You can even enable, disable, and delete customizations through a centralized customization management console.

Customizer provides the luxury of controlling application customizations to all users, or to specific users or groups, including departments, companies, executives, or combinations of all of the above. It can also alter application interfaces and add fields to forms using a shortcut approach that saves valuable time. In addition, you can attach field controls to database values, allowing you to add new fields to forms.

As a key component of Sage MAS 500—powerful business software that offers superior reliability, flexibility, and integration with your existing line of business applications—Customizer is a tremendous solution for modifying the tools you work with every day. Using Customizer can add productivity to your processes and give you smarter decision-making capabilities by providing customized information.

**Blytheco** LLC The Premier Sage Software Business Partner

**Corporate Offices**  
Orange County, California  
23161 Mill Creek Drive  
Laguna Hills, California 92653  
Phone: (949) 583.9500  
Toll Free: (800) 425.9843  
Fax: (949) 583.0649

[www.blytheco.com](http://www.blytheco.com)

**Atlanta, Georgia**  
1100 Johnson Ferry Road, Ste. 450  
Atlanta, Georgia 30342  
Phone: (404) 841.6240  
Toll Free: (800) 455.1368  
Fax: (404) 841.6243

[solutions@blytheco.com](mailto:solutions@blytheco.com)

#### Sage Software Business Partner of the Year

**Complete Sage Software Solutions**  
Sage MAS 500 • Sage MAS 200 • Sage MAS 90  
Sage BusinessWorks • Sage SalesLogix CRM • ACT! by Sage  
Sage ABRA HRMS • Sage FAS • Sage MIP Fund Accounting & Fundraising

#### Offices in these cities & states:

Atlanta, GA • Chicago, IL • Los Angeles, CA • Orange County, CA • Tampa, FL  
Colorado • Missouri • New Jersey • Ohio • Oklahoma • Pennsylvania • Tennessee  
Texas • Washington

National Presence - Local Touch



# Sage MAS 500

## Customizer

*"Our in-house programmer wrote a contact manager program for us to maintain customer information. This was easily linked to our Sage MAS 500 financial reporting system, thanks to the system's visual tools."*

Ron Helms, CFO  
Network Music

### System Implementation Option

Set up your forms and screens to record and merge the data you require, and define secure users for utilizing Customizer.

- Import and export customizations to a file, allowing them to be created on a test system and subsequently loaded onto a production system.
- Easily report on all customizations, selected and sorted according to user-defined data.
- Use security to limit Customizer access to authorized users.

### Interface Modifications

Alter your Sage MAS 500 desktop and forms options with a variety of changes for easier navigation and control.

- Change control properties, including color, font, font size, position, control size, and label text.
- Make controls invisible or disabled to restrict entry into certain fields.
- Control data integrity by assigning field-level defaults.
- Change the field navigation of a form, including dropping controls from the tab sequence, to allow efficient data processing by experienced users.
- Create new controls on forms, including text controls, edit controls, buttons, list boxes, check boxes, and command buttons.
- Store all changes independently (unlike traditional source code modifications), enabling changes to be applied automatically to update versions of Sage MAS 500.

### Scripting and Events

Benefit from the ability to customize field-level access.

- Change the standard behavior of the product or provide functionality to new controls using either Visual Basic or Java scripting.
- Control applications such as Microsoft Word software from within the script language through OLE.
- Change the value of other fields on the form.
- Add a script to form-level events, including Activate, Delete, Edit, New, and Save.

### Typical Uses for the Customizer

Improve efficiency by customizing your system to match the way you do business.

- Change text and labels throughout the application suite for specific business terminology.
- Disable or hide fields for particular users, for customizable field-level security.
- Add a field to a form that shows a value extracted from related tables.
- Modify tab stops or tab sequences to streamline data entry.

### Sage MAS 500 Application Framework (available separately)

Create your own add-on programs or interface controls for Sage MAS 500 using Visual Basic tools, wizards and other helpful application development solutions.

- Use a powerful suite of tools and components ideal for Visual Basic and SQL Server developers to create business applications or add-ons to Sage MAS 500, avoiding changes to Sage MAS 500's out-of-the-box functionality.
- Choose from several Virtual Basic interface controls needed for business applications, for example, the Sage MAS 500 navigator control for looking up key values.
- Harness the power of utilities that expedite the application development process using the Sage MAS 500 Application Wizard to create a Virtual Basic project based on your requirements.
- Establish a basic infrastructure for delivering your Virtual Basic/SQL application, such as security handling, reporting, and menu/launch functions.
- Implement Virtual Basic controls that manage the connection to SQL Server, including transaction management and concurrency handling.

**Blytheco** LLC The Premier Sage Software Business Partner

**National Presence  
Local Touch**

**Sage Software Business Partner of the Year**

**Corporate Offices**

|   |   |
|---|---|
| <b>Orange County, California</b><br>23161 Mill Creek Drive<br>Laguna Hills, California 92653<br>Phone: (949) 583.9500<br>Toll Free: (800) 425.9843<br>Fax: (949) 583.0649<br><a href="http://www.blytheco.com">www.blytheco.com</a> | <b>Atlanta, Georgia</b><br>1100 Johnson Ferry Road, Ste. 450<br>Atlanta, Georgia 30342<br>Phone: (404) 841.6240<br>Toll Free: (800) 455.1368<br>Fax: (404) 841.6243<br><a href="mailto:solutions@blytheco.com">solutions@blytheco.com</a> |
|---|---|

**Complete Sage Software Solutions**  
Sage MAS 500 ◊ Sage MAS 200 ◊ Sage MAS 90  
Sage BusinessWorks ◊ Sage SalesLogix CRM ◊ ACT! by Sage  
Sage ABRA HRMS ◊ Sage FAS ◊ Sage MIP Fund Accounting & Fundraising

**Offices in these cities & states:**  
Atlanta, GA ◊ Chicago, IL ◊ Los Angeles, CA ◊ Orange County, CA ◊ Tampa, FL  
Colorado ◊ Missouri ◊ New Jersey ◊ Ohio ◊ Oklahoma ◊ Pennsylvania ◊ Tennessee  
Texas ◊ Washington