



SAGE MAS 500

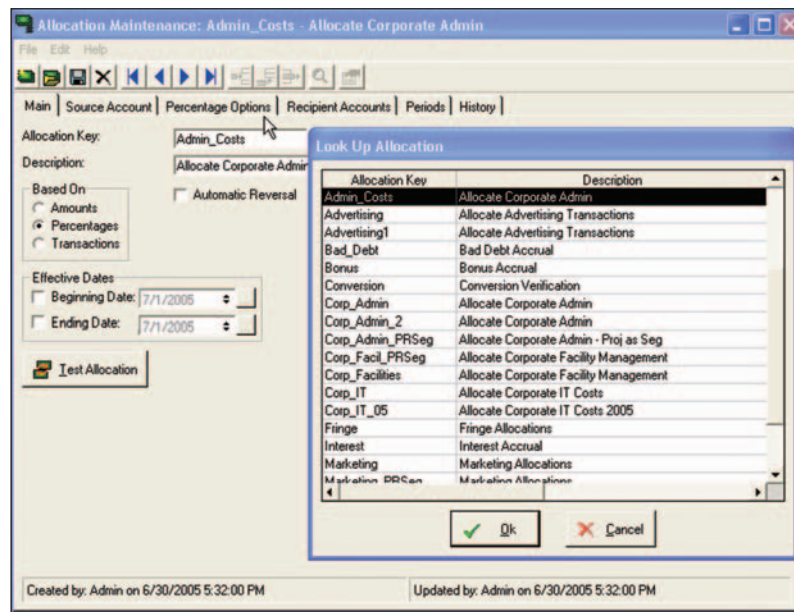
ALLOCATIONS

ALLOCATIONS OVERVIEW

- Automate entries made in the course of a normal accounting cycle.
- Accurately measure resource consumption using individualized basis calculations.
- Create virtually any allocation transaction consisting of multiple source, recipient, and offset accounts.
- Create an unlimited number of formulas and formula lines.
- Use database queries in formulas to calculate and deploy values from other databases.
- Streamline period-end processing.
- Tier transactions in any order to control the transaction processing sequence.
- Prevent errors with built-in processing controls.

SAGE MAS 500 SOLUTIONS

- CRM and E-business
- Financials and Project Accounting
- Distribution and Manufacturing
- Human Resources and Payroll
- Customization and Integration
- Business Intelligence



Enhance Efficiency with Timely and Accurate Period Closing

Being able to deploy resources efficiently and monitor costs accurately are key factors in gaining and sustaining a competitive advantage. The Sage MAS 500 ERP Allocations module offers you a powerful yet flexible tool to do just that—through timely and efficient allocation and accrual processing you can simplify and streamline period-end closing cycles.

Sage MAS 500 Allocations allows you to use the power of automation to structure virtually any allocation, distribute allocations in a variety of ways, redistribute individual transactions, and create accrual transactions. Any account or group of accounts can be allocated to one or more accounts, with full control over the accounts used in the transaction.

Formulas built into the solution enable you to perform a wide range of calculations quickly and easily, saving you time while helping to enhance the budgeting and planning process. With Allocations, you can use formulas to calculate a variety of allocation transactions, define global and local formulas, create an unlimited number of formulas and formula lines, and use database queries in formulas to calculate and deploy values from other databases.

Allocations prevents errors with built-in processing controls that allow you to run individual allocation and accrual transactions, as well as transaction batches in specific periods and select effective dates to restrict the lifecycle of a particular allocation. Allocations also provides a clear picture of formula calculation through a complete audit trail.



Sage MAS 500

Allocations

"In just my first few minutes of playing around with Sage MAS 500, I was able to pull up reports and information it took me hours to figure out in Dynamics. I am most impressed with Sage MAS 500's simplicity."

Sam Kolas, President
Boardwalk Equities, Inc.

Period-End Closing

Speed up period-end processing while increasing accuracy by minimizing manual processes and offline spreadsheets.

- Create allocations and accrual transactions—such as overhead allocations, interest accruals, or bonus accruals—using a flexible and powerful formula engine.
- Calculate overhead cost pools.
- Use multiple source, recipient, and off set accounts in a single transaction.
- Process intercompany and multi currency transactions.

Data Access

Enjoy the flexibility to integrate with a wide variety of applications.

- Integrate seamlessly with the Sage MAS 500 General Ledger.
- Incorporate budgeted values.
- Utilize data for calculations from virtually any company-wide data source, including Access, Dbase, Excel, FoxPro, SQL Server, and any ODB or OLE-DB compliant database.
- Combine data from multiple data sources in a single calculation.

Calculations

Create allocations quickly with powerful calculation tools.

- Define an unlimited number of formulas and formula lines.
- Create local formulas restricted to individual allocations.
- Utilize global formulas to share common calculations among allocations.
- Use database queries to incorporate values from other systems.
- Process multiple currencies, companies, and reference codes in the calculation of allocations and journal amounts.

Error Prevention

Maintain control over your allocations with advanced security features.

- Prevent re-generation of allocations already processed or posted.
- Track processed transactions which are flagged as pending until posted or canceled.
- Restrict the lifecycle of individual allocations.
- View in-depth audit trail reports of calculation details, including transaction errors and warnings.

Transaction Processing

Process your allocations quickly with a workflow-oriented user interface.

- Generate individual allocations or allocations batches.
- Control the processing sequence of multiple allocation transactions.
- Utilize results of prior sequenced calculations in subsequent transactions.
- Review processed allocations and accruals prior to posting.
- Move processed transactions to the general ledger as unposted transactions.



The Premier Sage Software Business Partner

Corporate Offices

Orange County, California
23161 Mill Creek Drive
Laguna Hills, California 92653
Phone: (949) 583.9500
Toll Free: (800) 425.9843
Fax: (949) 583.0649
www.blytheco.com

Atlanta, Georgia
1100 Johnson Ferry Road, Ste. 450
Atlanta, Georgia 30342
Phone: (404) 841.6240
Toll Free: (800) 455.1368
Fax: (404) 841.6243
solutions@blytheco.com

Sage Software Business Partner of the Year

Complete Sage Software Solutions

Sage MAS 500 • Sage MAS 200 • Sage MAS 90
Sage BusinessWorks • Sage SalesLogix CRM • ACT! by Sage
Sage ABRA HRMS • Sage FAS • Sage MIP Fund Accounting & Fundraising

Offices in these cities & states:

Atlanta, GA • Chicago, IL • Los Angeles, CA • Orange County, CA • Tampa, FL
Colorado • Missouri • New Jersey • Ohio • Oklahoma • Pennsylvania • Tennessee
Texas • Washington

National Presence - Local Touch



56 Technology Drive • Irvine, CA 92618-2301 • 800-854-3415 • www.sagesoftware.com

©2005 Sage Software, Inc. All rights reserved. The Sage Software logo and the Sage Software product and service names mentioned herein are registered trademarks or trademarks of Sage Software, Inc., or its affiliated entities. All other trademarks are the property of their respective owners.

5SES013 09/05 05-3846/0905