



SAGE FAS

FAS COMPLIANCE ADVISOR

MAKE SARBANES-OXLEY COMPLIANCE A BREEZE.

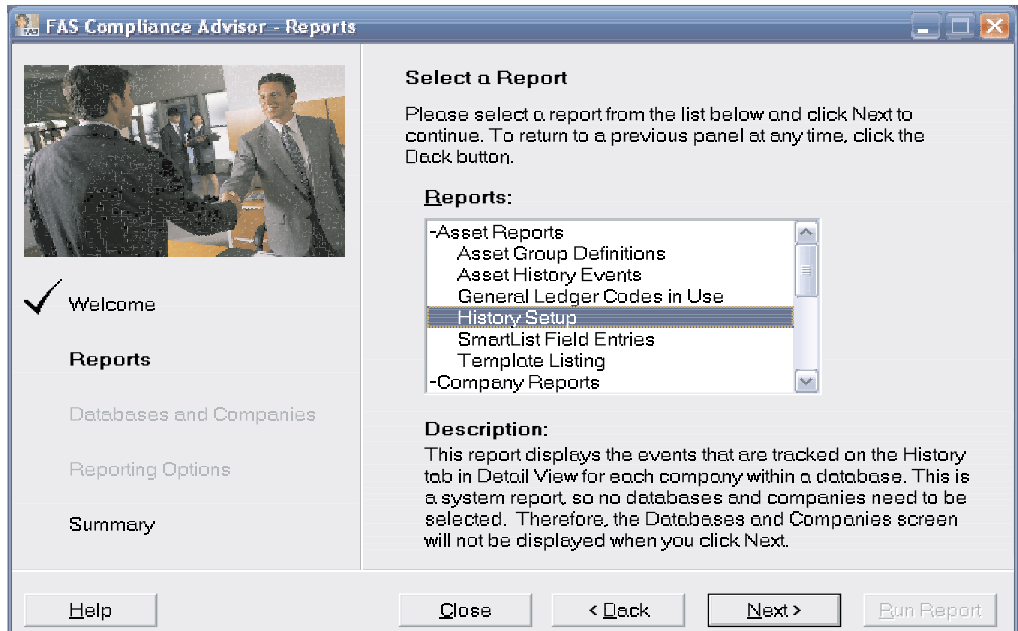
- Comprehensive Audit Related Reports
- Easy-to-use Wizard-based Design
- Easily View Reports On-screen
- Save Reports in Excel (.xls), Adobe Acrobat (.pdf), and numerous other formats for paperless record keeping and easy distribution

GET THE MOST COMMONLY REQUESTED AUDITING REPORTS.

- Security Status
- System Access by User
- System Profile Definitions
- System Profile Assignments
- Company Access by User
- Company Profile Definitions
- Company Profile Assignments
- Database and Company Summary
- SmartList Field Entries
- Asset Group Definitions
- General Ledger Codes in Use
- Template Listing
- Company Setup
- Customized Reports Listing
- History Setup
- Asset History Events

ANSWERS TO YOUR QUESTIONS (AND MUCH MORE) ARE JUST A CALL OR CLICK AWAY.

Sage FAS SupportPlus members benefit from an unmatched level of customer support. You can use Sage FAS SupportPlus Online to get answers 24 hours a day, 7 days a week. Or call our friendly experts for help.



FAS Compliance Advisor is a new, wizard-based module that allows you to easily generate the most commonly requested auditing reports to demonstrate your compliance with the stringent security requirements of Sarbanes-Oxley regulations.

Easily demonstrate your Sarbanes-Oxley compliance to your auditors with FAS Compliance Advisor. This new wizard-based module makes it easy to produce 16 of the most commonly requested auditing reports. FAS Compliance Advisor includes a comprehensive set of reports covering system security, data access, system setup, asset audit trails, and many other areas so you can show your compliance with the strict security requirements of Sarbanes-Oxley regulations—and get the complete peace of mind you need to focus on running your business.

FAS Compliance Advisor was developed to address auditors' growing need to examine various information from your Sage FAS system, including:

- Who has access to the system?
- Who has access to the different companies?
- What permissions do certain employees have?
- Who has the ability to delete assets in the system?
- Can you supply a detailed audit trail for a particular asset?

With FAS Compliance Advisor producing all the reports you need to demonstrate your compliance with Sarbanes-Oxley regulations is a breeze.

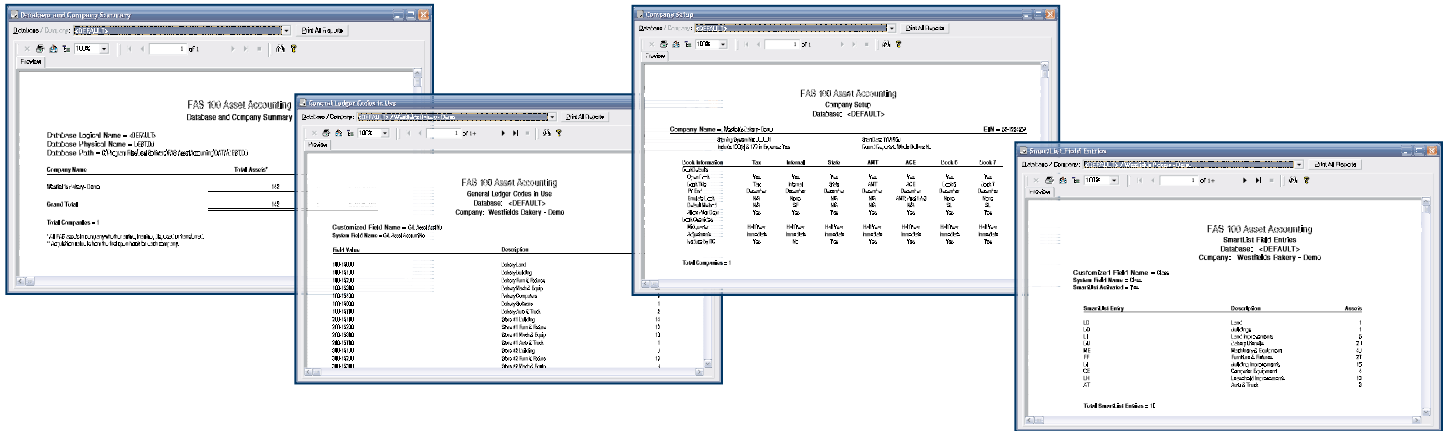
From developing innovative products to providing award-winning customer support, Sage Software is dedicated to surpassing expectations. Our software is supported by a nationwide network of Certified Business Partners who are your resource for implementation, training, service, and support. For more information about FAS Compliance Advisor, please contact your local Sage Software Business Partner, call us toll free directly at 800-368-2405, or visit our Web site at www.sagefas.com.



FAS Compliance Advisor

Sage Software has a real focus on fixed assets — it's not just a sideline for them. I think that's why their solution is so comprehensive. I'm also impressed by the fact that Sage Software consistently updates its solutions... a lot of companies just don't keep up with the latest tax codes."

*Greg Strohmeier
Illinois Tool Works, Inc.*



The included reports allow you to:

Display each system profile and the corresponding security access level for the system level features. This is a system report, so no databases or companies need to be selected. Therefore, the Databases and Companies screen will not be displayed when you click Next.

Confirm information on all of the general ledger codes created within a company. It can be run for multiple companies within multiple databases.

Show all of the SmartList entries, their descriptions, and the number of assets using each SmartList entry. The listing of Smartlist field entries can be run for multiple companies within multiple databases.

Display fields and options on the New Company dialog and the information that is currently entered on the dialog. This report can be run for multiple companies within multiple databases.

Show databases, companies and related information. This report can be run for all companies within a selected database or for multiple databases.

Display each user and the companies they have access to along with the corresponding company profile. This report can be run for a selected database or for multiple databases.

And much more!



The Premier Sage Software Business Partner

Corporate Offices

Orange County, California
23161 Mill Creek Drive
Laguna Hills, California 92653
Phone: (949) 583.9500
Toll Free: (800) 425.9843
Fax: (949) 583.0649
www.blytheco.com

Atlanta, Georgia
1100 Johnson Ferry Road, Ste. 450
Atlanta, Georgia 30342
Phone: (404) 841.6240
Toll Free: (800) 455.1368
Fax: (404) 841.6243
solutions@blytheco.com

Sage Software Business Partner of the Year

Complete Sage Software Solutions
Sage MAS 500 • Sage MAS 200 • Sage MAS 90
Sage BusinessWorks • Sage SalesLogix CRM • ACT! by Sage
Sage ABRA HRMS • Sage FAS • Sage MIP Fund Accounting & Fundraising

Offices in these cities & states:
Atlanta, GA • Chicago, IL • Los Angeles, CA • Orange County, CA • Tampa, FL
Colorado • Missouri • New Jersey • Ohio • Oklahoma • Pennsylvania • Tennessee
Texas • Washington

National Presence - Local Touch



2325 Dulles Corner Blvd., Suite 800 • Herndon, Virginia 20171 • 800-368-2405 • www.sagefas.com/complianceadvisor

©2006 Sage Software. All rights reserved. Reproduction in whole or in part without permission is prohibited. The capabilities, system requirements and/or compatibility with third-party products described herein are subject to change without notice. Contact Sage Software for current information.

06-5844/0706