



SAGE FAS

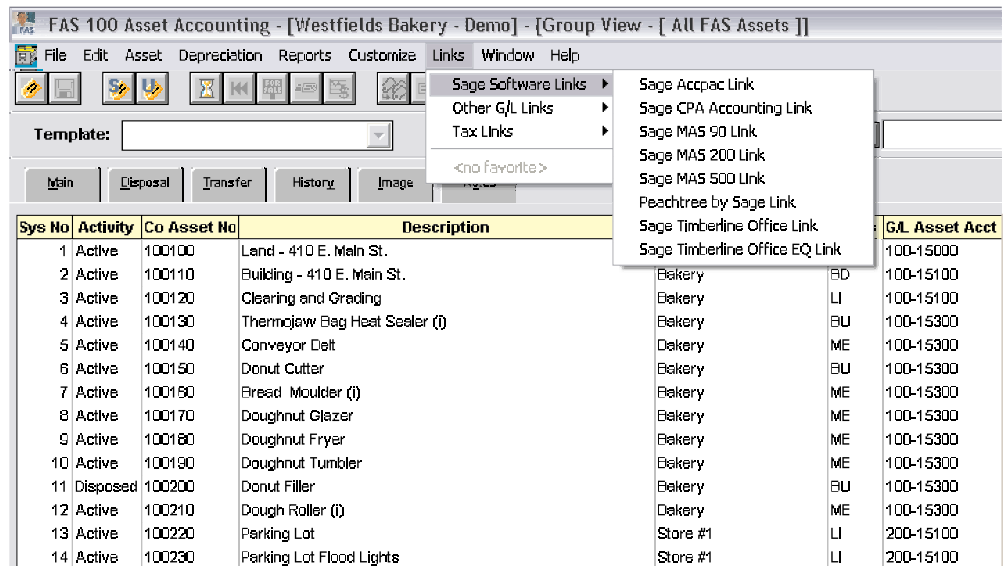
SAGE FAS LINKS

IMPROVE CONSISTENCY. REDUCE ERRORS.

- Quickly move fixed asset information from your Sage FAS solution into your General Ledger or other accounting system with just a few simple clicks of the mouse
- Ensure the consistency of the information entered
- Reduce the risk of data errors
- Save time by avoiding having to re-key fixed asset information into another system after a run of depreciation
- Dedicated Sage FAS Links available for Sage Accpac, Sage Pro, Sage MAS 90/200, Sage MAS 500, Sage MIP Fund Accounting, Peachtree by Sage, and Sage Timberline Office
- Links to other Sage Software applications available via the Sage FAS Universal Link
- Integration available for several third-party systems
- Sage FAS Universal Link also delivers fixed asset data to any system capable of importing a standard ASCII file

TOP-NOTCH SUPPORT IS JUST A CALL OR CLICK AWAY

Sage FAS SupportPlus members benefit from an unmatched level of customer support. You can use Sage FAS SupportPlus Online to get answers 24 hours a day, 7 days a week. Or call our friendly experts for help. What's more, Sage FAS SupportPlus users can also download software upgrades, access multimedia tutorials, and take advantage of exclusive discounts on new products.



Sage FAS Links provide built-in integration to other Sage Software products as well as any general ledger or other accounting system.

Easily and conveniently move fixed asset information from your Sage FAS solution into your General Ledger or other accounting system with Sage FAS Links. Just a few simple clicks of the mouse and you can quickly transfer your fixed asset data, ensuring the consistency of the information entered and reducing the risk of data errors. You'll save valuable time because your fixed asset information doesn't have to be re-keyed into another system after a run of depreciation.

Sage Software has developed a number of dedicated links to other Sage products, including Sage MAS 90/200, Sage MAS 500, Sage Timberline Office, Sage Accpac, Sage MIP Fund Accounting, and more – all included at no-charge with your purchase of FAS 100 Asset Accounting or FAS 500 Asset Accounting. Integration also exists for several third-party systems including CCH ProSystem fx Tax, Microsoft Dynamics GP, and Microsoft Dynamics SL. In addition, the Sage FAS Universal Link can deliver fixed asset data to any system capable of importing a standard ASCII file. When you want to effortlessly integrate your Sage FAS fixed asset information with your accounting system, there's no better way than with Sage FAS Links.

From developing innovative products to providing award-winning customer support, Sage Software is dedicated to surpassing your expectations. For more information about Sage FAS Links, please call us toll free at 800-368-2405, or visit our Web site at www.sagefas.com. Sage customer service representatives are standing by to provide you with top-notch products and service.



Sage FAS Links

“Sage FAS and Sage Timberline Office are great together, because there are few limitations to their use. They integrate well, and are also able to communicate key information to and from other software. We frequently recommend Sage FAS and Sage Timberline Office to others, including our subcontractors.”

Edwin Tyroch, Controller
Shallow Ford Construction Company

Ease, convenience and flexibility.

- Sage FAS Links are readily available to any customer and come pre-installed with your Sage FAS fixed asset software solution
- Links are highly visible and easy to locate on a “Links” menu in FAS 50 Asset Accounting, FAS 100 Asset Accounting, and FAS 500 Asset Accounting

- All links to Sage Software GL packages are available at no charge, and third-party integrations as well as the Sage FAS Universal Link are available at a nominal charge.
- Sage FAS Gov and Sage FAS Nonprofit include a dedicated link to Sage MIP Fund Accounting and the Sage FAS Universal Link.

	FAS 50 Asset Accounting	FAS 100 Asset Accounting	FAS 500 Asset Accounting	FAS Gov 100 Asset Accounting	FAS Nonprofit 100 Asset Accounting	Depr Expense Journal Entry	Ability to create assets in FAS	SmartList or Template Integration	Company Mapping	Automatic Posting	Post to File	Post In Summary	Post In Detail
Sage Accpac	X	X	X			X			X	X		X	
Sage Pro	X	X	X	X	X	X					X	X	
Sage Business Works Gold	Universal	Universal	Universal			X					X	X	
Sage MAS 90	X	X	Universal			X		X	X			X	
Sage MAS 200	X	X	Universal			X		X	X			X	
Sage MAS 500	X	X	X			X		X	X			X	
Sage MAS 500 API/PO			X			X	X	X	X				X
Sage MIP Fund Accounting				X	X	X	X	X	X	X	X	X	
Sage MIP Government Series				X	X	X	X	X	X	X	X	X	
Peachtree by Sage	X*	X	X			X		X*	X*	X*	X	X	
Sage PFW	Universal	Universal	Universal			X					X	X	
Sage Timberline Office	X	X	X			X			X	X	X	X	
Sage Timberline Equipment Cost	X	X	X			X					X		X
Sage FAS Universal Link	X	X	X	X	X	X					X	X	

*FAS for Peachtree by Sage and FAS 100 Asset Accounting - Peachtree Edition offered with direct integration built in.

Minimum System Requirements		
	Single User / Network Client Requirements	Network Server Requirements
Operating System	Microsoft® Windows 2000 with SP 4; Windows XP (Professional or Home) with SP 1 or 2	Novell® NetWare® Server v6.0, or 6.5; Windows 2000 Server with SP 4; Windows Server® 2003 (Standard or Enterprise)
Processor	600 Mhz or higher minimum; 1 Ghz or higher recommended	600 Mhz or higher minimum; 1 Ghz or higher recommended
RAM	128MB or higher	Multi-purpose servers: 256MB of RAM or higher
Free Disk Space	300MB for the FAS Program, 70MB minimum for FAS Report Writer (if applicable); 200MB required for full install of FAS Report Writer (if applicable)	600MB for the FAS program installation

Remote Access Requirements	
	Operating System and/or Third-party Software
Client-Based Solutions	Windows XP with Remote Desktop Connection enabled Third-party remote access solution (such as PC Anywhere™)
Server- and Network-Based Solutions	Windows 2000 running Windows Terminal Services with SP 4; Windows Server™ 2003 running Windows Terminal Services (Standard Edition or Enterprise Edition) Windows 2000 with SP 4 or Windows XP (Professional or Home) with SP 1 or 2, in conjunction with Citrix® MetaFrame XP(XPe, XPa, or XPs) Third-party Virtual Private Network (VPN) <i>NOTE: Cannot be used across subnets, VPNs or WANs without Windows Terminal Services or Citrix.</i>

Blytheco - The Premier Sage Software Business Solutions Provider • National Presence, Local Touch • 1.800.425.9843 • www.blytheco.com



2325 Dulles Corner Blvd., Suite 800 • Herndon, Virginia 20171 • 800-368-2405 • www.sagefas.com

©2006 Sage Software. All rights reserved. Reproduction in whole or in part without permission is prohibited. The capabilities, system requirements and/or compatibility with third-party products described herein are subject to change without notice. Contact Sage Software for current information.