

Sage Abra

Sage Abra Link

Exchange data quickly and easily between Sage Abra HRMS and other HR and payroll systems. Abra Link was designed specifically with busy HR departments in mind because it saves time by minimizing the hassle of duplicating data entry. You'll save hours by importing data such as employee and applicant information from other human resources, recruiting, payroll, benefits and spreadsheets directly into Abra HRMS – an especially helpful tool if you're installing Abra HRMS for the very first time.

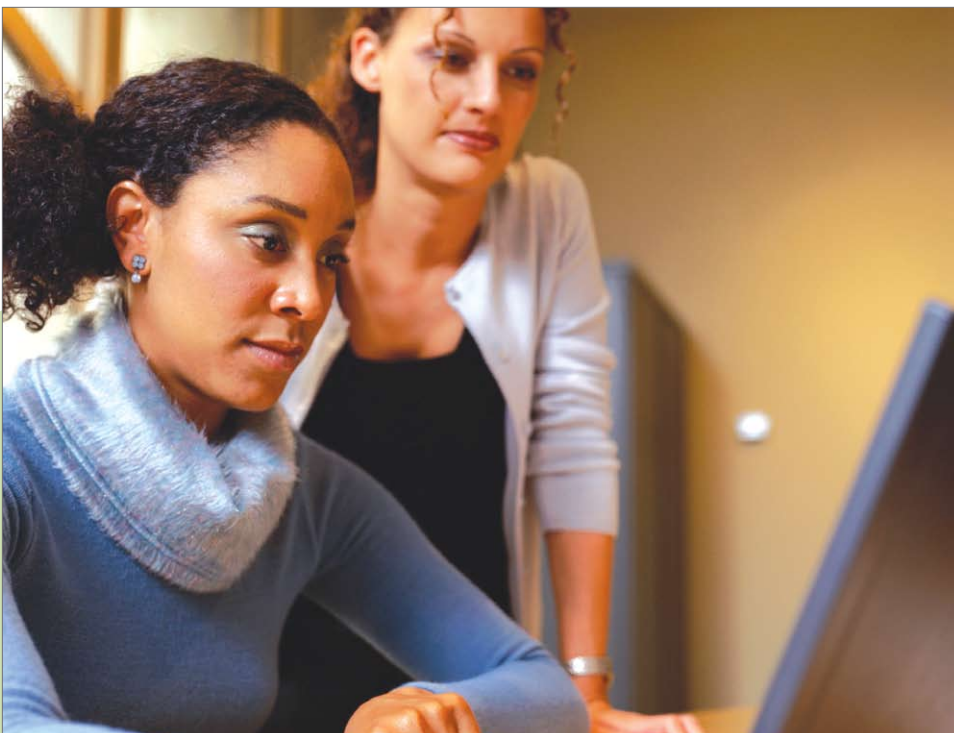
Abra Link can handle virtually any type of ASCII file created from a mainframe, payroll or service bureau, making it easy to convert the information for immediate use in Sage Abra. You can use Abra Link to update Sage Abra HR with employee changes and new employee information after each payroll run. Create reusable templates to handle ASCII file importing and exporting between Sage Abra and other systems. Deliver information

to other spreadsheet programs, transfer time, attendance and payroll information quickly and accurately. You can even select your own import and export criteria. Plus, with powerful, multi-level security features and the ability to easily import and export data from ADP PC/Payroll for Windows, you'll have a complete solution for sharing information between different programs.

From developing innovative products to providing award-winning customer support, Sage is dedicated to surpassing expectations in all aspects of our business. Our software is supported by a nationwide network of Certified Business Partners who are your resource for implementation, training, service, and support. For more information about Sage Abra Link, please contact your local Sage Business Partner, call us toll free directly at **800-424-9392**, or visit our Web site at **www.sageabra.com**.

BENEFITS

- **Productivity Features**
Reduce the time spent on entering data manually by sharing information from other HR, recruiting, payroll, benefits and spreadsheet systems with Sage Abra HRMS.
- **Ascii File Flexibility**
Convert virtually any type of ASCII file created from a mainframe, payroll or service bureau for immediate use in Sage Abra HRMS.
- **Easy Import/Export Capabilities**
Select your own import/export criteria with the ability to establish reusable templates and transfer critical HR information on a routine basis, quickly and accurately.
- **Direct Importing And Exporting from ADP PC/Payroll**
Easily import and export data to and from the Abra HR database to ADP/Payroll for Windows Versions 2.52 and up – avoiding duplicate data entry and eliminating key stroke errors.
- **Powerful Security Functionality**
Protect key information with sophisticated, multi-level security with complete control over who has access to data at any level.



FEATURES

Increase Efficiency

Give your HR staff the tools they need to streamline workflow within your organization. Abra Link includes powerful features that allow you to save time and minimize the hassle of duplicating data entry by sharing information between other human resources, recruiting, payroll, benefits and spreadsheet systems and Sage Abra HRMS. Eliminate hours of manual data entry when building employee information into a new Sage Abra installation.

Better organization

With Sage Abra Link can handle virtually any type of ASCII file created from a mainframe, payroll or service bureau system and convert the information for immediate use in Sage Abra. Establish reusable templates to handle ASCII file importing and exporting between Sage Abra and other systems.

Easily Manage Ongoing Importing and Exporting

With Sage Abra Link you're in complete control. Transfer other time, attendance, and payroll information to Sage Abra routinely, quickly and accurately. Deliver information to spreadsheet programs for easy evaluation of data, such as salary scales and benefit cost options. Even select your own import/export criteria.

Link Abra HRMS to ADP® PC/Payroll

Save time by importing and exporting data to and from the Abra HR database to ADP/Payroll for Windows Versions 2.52 and up. You can automatically transfer changes to employee benefits, salary, demographics, or other data into the ADP database, avoiding duplicate data entry and eliminating key stroke errors. Abra Link is also pre-formatted to import data directly from ADP PC/Payroll into Abra HR. Simply create an MFOUT file in ADP's system, and Abra Link will transfer up to 30 information fields.

Maximum Security of Sensitive Data

Create and assign an unlimited number of user IDS and passwords, follow audit trails to identify who made each change by date, time, and type of change and protect key information with sophisticated, multi-level security. Abra Link gives you complete control over which groups have access to vital data at any level.



The Premier Provider of Effective Business Software Solutions

Regional Offices

Orange County, California
23161 Mill Creek Drive
Laguna Hills, California 92653
Phone: (949) 583.9500
Toll Free: (800) 425.9843
Fax: (949) 583.0649

www.blytheco.com

Atlanta, Georgia
1100 Johnson Ferry Road, Ste. 450
Atlanta, Georgia 30342
Phone: (404) 841.6240
Toll Free: (800) 455.1368
Fax: (404) 841.6243

solutions@blytheco.com

Sage Software Business Partner of the Year

Complete Sage Software Solutions

Sage MAS 500 ◊ Sage MAS 200 ◊ Sage MAS 90
Sage BusinessWorks ◊ Sage SalesLogix CRM ◊ ACT! by Sage
Sage ABRA HRMS ◊ Sage FAS ◊ Sage MIP Fund Accounting & Fundraising

Offices in these cities & states:

Atlanta, GA ◊ Chicago, IL ◊ Los Angeles, CA ◊ Orange County, CA ◊ Tampa, FL
Colorado ◊ Minnesota ◊ Missouri ◊ New Jersey ◊ Ohio ◊ Oklahoma ◊ Pennsylvania
◊ South Carolina ◊ Tennessee ◊ Texas ◊ Washington

National Presence - Local Touch