
.timecard Integration With Piecework For Payroll

IT-1039

Overview

This Extended Solution to the e-Business Manager Module integrates IT-1038: *.timecard applet* and TC-1010: *Piecework for Payroll & TimeCard's* 'Pay Rate * No of Pieces' calculation method.



IT-1038: *.timecard applet* and TC-1010: *Piecework for Payroll & TimeCard* must both be installed and enabled in order for this to function. Additional functionality is available if TC-1045: *Employee Rate or Cost Code Rate by Cost Code* is enabled.

Installation

Before installing this Extended Solution, please verify that the version level(s) printed on the CD label are the same as the version level(s) of the MAS 90 MAS 200 module(s) you are using. For further information, please see the Upgrades and Compatibility section below. Check your Shipping Manifest for a complete list of Extended Solutions shipped.

For detailed installation instructions, please refer to the Sage website at:

http://support.sagesoftware.com/mas/extended_solutions/main.cfm

Installing Your Extended Solutions under Windows

From a CD

If you have the *autorun* function turned on for your PC, the installation program will start up automatically. If not, find the **autorun.exe** file on your CD-ROM drive and double-click it to start the installation program. Follow the on-screen instructions.

From the Sage FTP site

When your Extended Solution is ready to be downloaded, you will receive an email from 'extendedsolutions.na@sage.com' telling you that it is ready. The email will contain the Customer Name, Cross Reference, a case-sensitive Password, a link via which you can download your Extended Solution, instructions and a Shipping Manifest. If you have any problems with this order, please email extendedsolutions.na@sage.com and we will assist you during normal business hours.

Extended Solutions Control Center

Installing any Extended Solution will add an Extended Solutions Control Center to the MAS 90 MAS 200 Library Master Utilities menu. When you open the Control Center, the following options will be available:

- Extended Solutions Manuals
- Remove Extended Solutions

Extended Solutions

- Unlock Extended Solutions
- Merge Installation Files
- Extended Solutions Setup options

Custom Office

If you customize your MAS 90 MAS 200, then you must run the Update Utility *every time* you install this Extended Solution.

Setup

Once the disk is installed, you will need to access the Accounts Payable Setup menu option screen. After the option screens have been displayed, a Setup screen for this Extended Solution will appear. Check the 'Enable Extended Solution' box to activate this Extended Solution (Figure 1).

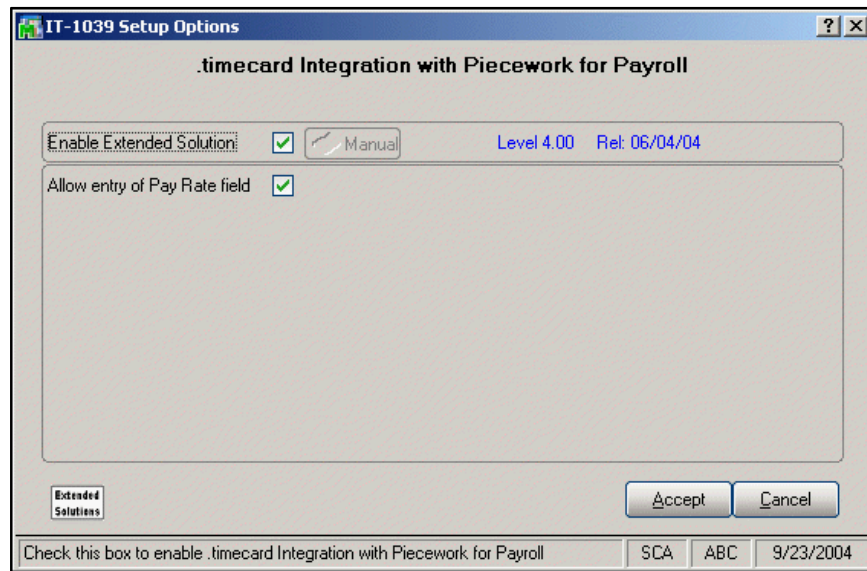


Figure 1

ALLOW ENTRY OF PAY RATE FIELD: Check this box to allow entry of Pay Rate field.

Operation

.timeCard Entry will be modified with a new field: 'No. of Pieces'. The user will have access to change the 'Pay Rate' on the entry, if the Setup to 'Allow entry of Pay Rate field' is checked; if unchecked, then the 'Pay Rate' cannot be changed.

'Pay Amount' will be calculated based on TC-1010 'Pay Rate * No. of Pieces' calculation (Figure 2). Please refer to the TC-1010 manual for more information regarding this calculation.

Extended Solutions

If TC-1045: *Employee Rate or Cost Code Rate by Cost Code* is enabled, and Cost Code/Earnings Code Maintenance says to use the Employee's Pay Rate, then the 'No. Of Pieces' field will be disabled for this pay entry.

The screenshot shows a web browser window titled "TimeCard Entry - Microsoft Internet Explorer". The page header for "ABC Distribution and Service Corporation" includes links for Home, TimeCard, Inquiry, and Help. The main content area is a form titled "TimeCard Entry" with the following fields and values:

Date Worked:	04/04/2004
Sequence:	001
Labor Code:	0000003
Earnings Code:	01
State:	WI
Local:	N/A
Dept. Worked:	13
W/C Code:	N/A
Job Number:	0000001
Cost Code:	001-000-000
Hours Worked:	4.50
No. of Pieces:	12.00
Rate:	10.00
Amount:	90.00

At the bottom of the form are "Accept" and "Delete" buttons. Below the form, there is a menu with links for Home, TimeCard, Inquiry, and Help, and a note: "Please send questions or comments to the Webmaster."

Figure 2

TimeCard Entry Listing, TimeCard Inquiry and Supervisor Approval have been modified to include a 'No. of Pieces' column (Figure 3).

TimeCard Entries

Date Worked	Earnings Code	Pay Rate	Hours	Amount	Job Number	Cost Code	No. of Pieces
04/04/2004	01	10.00	4.20	120.00	0000001	001-000-000	12.00
05/04/2004	01	20.00	7.00	180.00	0000001	002-000-000	9.00
05/05/2004	01	17.88	8.00	143.04	0000001	001-000-000	0.00
				Total Amount:			443.04
				Total Hours:			19.20

Click on Date Worked to edit existing entry.

Click Add for new entry or Next to proceed to confirmation.

[Menu](#) [Home](#) [TimeCard](#) [Inquiry](#) [Help](#)

Please send questions or comments to the [Webmaster](#).

Figure 3

Report Master/Visual Integrator

The files listed below have been added or changed in the Data Dictionary by this Extended Solution for Visual Integrator purposes.

<i>New File:</i>	<i>Field:</i>
IT.TCARD	NO_OF_PIECES
	PIECE_RATE

The Data Dictionary may contain other files and data fields that are not available without their corresponding Sage Software Extended Solutions installed.

Note: The Report Master module is not supported in MAS 200 SQL.

Crystal Reports and the ODBC Dictionary

The files listed below have been added or changed in the ODBC Dictionaries by this Extended Solution for Crystal Reports purposes.

<i>File:</i>	<i>Description</i>	<i>Fields:</i>
IT_TC	TimeCard	NumberOfPieces
		PieceRate

Extended Solutions

Be aware that the ODBC Dictionaries may contain other files and data fields that will be unavailable without their corresponding Extended Solutions installed.

What's New

With the 10-07-04 release:

- Integrated with TC-1045.

With the 09-23-04 release:

- Added a new setup option 'Allow entry of Pay Rate field'.

Upgrades and Compatibility

The installation CD is labeled with the version of the MAS 90 MAS 200 module for which this Extended Solution was prepared. This Extended Solution will check its compatibility with the appropriate MAS 90 MAS 200 modules and will be disabled if an incompatibility is found. If you upgrade your MAS 90 MAS 200 modules, this Extended Solution must be upgraded as well. Your MAS 90 MAS 200 dealer can supply this upgrade.

Documentation

Only changes made to the standard operation of MAS 90 MAS 200 have been documented in this manual. Operations not documented in this manual are standard procedures of MAS 90 MAS 200 processing. Standard MAS 90 MAS 200 processes, data entry screens, inquiry screens, reports, updates, etc., have not been changed unless addressed in this document.

Parts of this document may refer to the *Specific Purpose Rule*. When referenced, the described feature was developed for a specific client to its specifications and may not conform to generally accepted MAS 90 MAS 200 standards and procedures. These features may or may not benefit you in your application of MAS 90 MAS 200.

Acknowledgments

© 2005 Sage Software, Inc. All rights reserved. Sage Software, MAS 90 and MAS 200 are registered trademarks or trademarks of Sage Software, Inc. All other trademarks are the property of their respective owners.
