

Statement Printing with Sales Order Selection

AR-1235

Overview

This Extended Solution to the Accounts Receivable module adds a Sales Order Number and Terms Code to the Statement Printing Selection tab.



The MAS 90 MAS 200 Sales Order module must be activated in order to enable this Extended Solution.

Installation

Before installing this Extended Solution, please verify that the version level(s) printed on the CD label are the same as the version level(s) of the MAS 90 MAS 200 module(s) you are using. For further information, please see the Upgrades and Compatibility section below. Check your Shipping Manifest for a complete list of Extended Solutions shipped.

For detailed installation instructions, please refer to the Sage website at:
http://support.sagesoftwareonline.com/mas/extended_solutions/main.cfm

Installing Your Extended Solutions under Windows

From a CD

If you have the *autorun* function turned on for your PC, the installation program will start up automatically. If not, find the **autorun.exe** file on your CD-ROM drive and double-click it to start the installation program. Follow the on-screen instructions.

From the Sage FTP site

When your Extended Solution is ready to be downloaded, you will receive an email from 'extendedsolutions.na@sage.com' telling you that it is ready. The email will contain the Customer Name, Cross Reference, a case-sensitive Password, a link via which you can download your Extended Solution, instructions, and a Shipping Manifest. If you have any problems with this order, please email extendedsolutions.na@sage.com and we will assist you during normal business hours.

Extended Solutions Control Center

Installing any Extended Solution will add an Extended Solutions Control Center to the MAS 90 MAS 200 Library Master Utilities menu. When you open the Control Center, the following options will be available:

- Extended Solutions Manuals
- Remove Extended Solutions

Sage Software, Inc. • 888-856-2378 • www.sagesoftware.com/mas90/extendedsolutions/

Extended Solutions

- Unlock Extended Solutions
- Merge Installation Files
- Extended Solutions Setup options

Custom Office

If you customize your MAS 90 MAS 200, then you must run the Update Utility *every time* you install this Extended Solution.

Setup

Upon completion of software installation, you will need to access Extended Solutions Setup from the Accounts Receivable Setup menu. Select this part number, and the Setup screen for this Extended Solution will appear (Figure 1). Check the 'Enable Extended Solution' box to activate this Extended Solution. The manual for this Extended Solution can be viewed by clicking the 'Manual' button next to the 'Enable Extended Solution' check box. It can also be viewed via the Extended Solutions Control Center (see Installation, above).

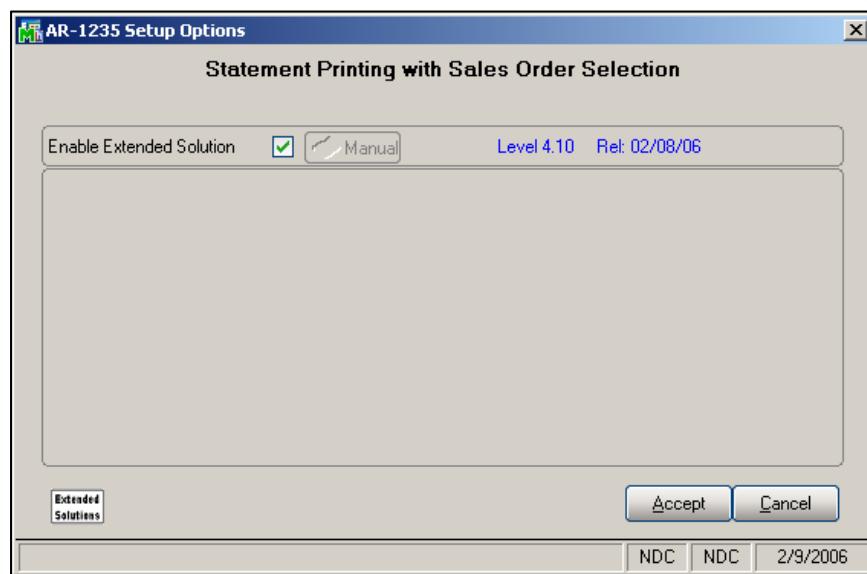


Figure 1

You should visit this Setup screen after each upgrade or reinstallation of this Extended Solution.

Operation

Sales Order Number and Terms Code have been added to the Select Field list of Statement Printing (Figure 2). When the defined range is other than all, for Sales Order Number, and the Customer is an Open Item type Customer, then only regular invoices (type = "IN") which reference a Sales Order Number in the range specified will print on the statements.

Extended Solutions

When a range is specified for Terms Code, only Invoices which meet all selection criteria including the specified Terms Code(s) will be included on the statement.

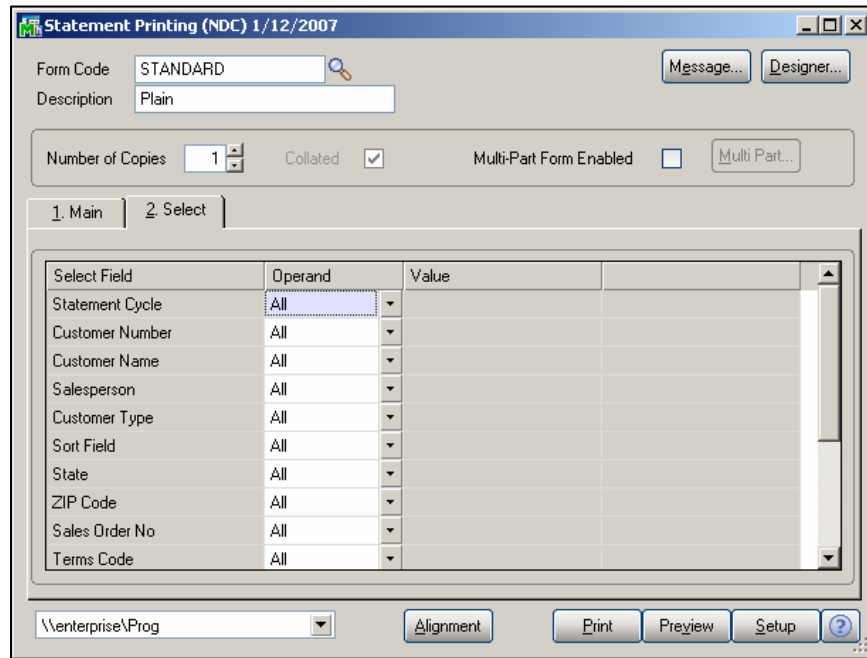


Figure 2

What's New

With the 01-12-07 release:

- Added 'Terms Code' to the Statement Printing Selection tab

Upgrades and Compatibility

The installation CD is labeled with the version of the MAS 90 MAS 200 module for which this Extended Solution was prepared. This Extended Solution will check its compatibility with the appropriate MAS 90 MAS 200 modules and will be disabled if an incompatibility is found. If you upgrade your MAS 90 MAS 200 modules, this Extended Solution must be upgraded as well. Your MAS 90 MAS 200 dealer can supply this upgrade.

Documentation

Only changes made to the standard operation of MAS 90 MAS 200 have been documented in this manual. Operations not documented in this manual are standard procedures of MAS 90 MAS 200 processing. Standard MAS 90 MAS 200 processes, data entry screens, inquiry screens, reports, updates, etc., have not been changed unless addressed in this document.

Extended Solutions

Parts of this document may refer to the *Specific Purpose Rule*. When referenced, the described feature was developed for a specific client to its specifications and may not conform to generally accepted MAS 90 MAS 200 standards and procedures. These features may or may not benefit you in your application of MAS 90 MAS 200.

Acknowledgments

© 2005 Sage Software, Inc. All rights reserved. Sage Software, MAS 90, and MAS 200 are registered trademarks or trademarks of Sage Software, Inc. All other trademarks are the property of their respective owners.



Blytheco The Premier Provider of Effective Business Software Solutions
LLC

**National Presence
Local Touch**

Sage Software Business Partner of the Year

Regional Offices

<p>Orange County, California 23161 Mill Creek Drive Laguna Hills, California 92653 Phone: (949) 583.9500 Toll Free: (800) 425.9843 Fax: (949) 583.0649</p>	<p>Atlanta, Georgia 1100 Johnson Ferry Road, Ste. 450 Atlanta, Georgia 30342 Phone: (404) 841.6240 Toll Free: (800) 455.1368 Fax: (404) 841.6243</p>
---	---

www.blytheco.com solutions@blytheco.com

Complete Sage Software Solutions
Sage MAS 500 ◊ Sage MAS 200 ◊ Sage MAS 90
Sage BusinessWorks ◊ Sage SalesLogix CRM ◊ ACT1 by Sage
Sage ABRA HRMS ◊ Sage FAS ◊ Sage MIP Fund Accounting & Fundraising

Offices in these cities & states:
Atlanta, GA ◊ Chicago, IL ◊ Los Angeles, CA ◊ Orange County, CA ◊ Tampa, FL
Colorado ◊ Minnesota ◊ Missouri ◊ New Jersey ◊ Ohio ◊ Oklahoma ◊ Pennsylvania
◊ South Carolina ◊ Tennessee ◊ Texas ◊ Washington