

Service Route Management

The Complete Software Solution For The Rental Industry

Automate Your Delivery Routes With Service Route Management For ARM

Using the latest technology from ARM and Microsoft MapPoint® you can provide your drivers with route information, equipment details, bar code scanning, and **Point-To-Point Driving Instructions**—all on a Pocket PC.

This time saving system will reduce paperwork, cut down on lost time, record why a delivery was skipped, and help your drivers find the delivery site quickly and accurately.

Key Benefits Of Service Route Management

- ▶ Service Route Management's core technology is based on the Microsoft Pocket PC Operating System and compatible Pocket PC devices.
- ▶ Bar code scanning is built-in, making it easier to track equipment.
- ▶ With **One Touch Entry**, your driver can record the stop **fast!**
- ▶ When stops are missed or incomplete, **Service Route Management (SRM)** can record this and you can even apply **Reason Codes** to indicate why.
- ▶ All the information your drivers need is loaded in the Pocket PC:
 - ▶ Stop address
 - ▶ Equipment information
 - ▶ Instructions and comments
 - ▶ **Point-To-Point Driving Instructions** with the optional MapPoint software.
- ▶ **It's easy to use.** Simply dock the Pocket PC before leaving the office to upload today's data. During the route, the driver adds information and when they return to the office, the new data is uploaded to ARM.
- ▶ Exception reporting is standard in SRM; it provides management with information on why a stop was missed or equipment was not delivered.



No compromises in quality, features, or technology

View Stop Information In The Field

Designed by experts that know the rental business

View Equipment information



Loaded with features that let your business run smoothly

View instructions For Each Stop



How The Features Of The Number 1 Rental Management Software System Can Benefit Your Company

Completely Integrated with Automated Rental Management Software

Service Route Maintenance (SRM) is a new module that is designed to perform in conjunction with Automated Rental Management (ARM) and the Sage MAS 90 accounting software to provide rental businesses with a comprehensive solution.

Support recurring service routes, delivery or pickup routes

SRM is highly effective for scheduling deliveries and pickups of rental equipment and using the *recurring service routes* feature, scheduling of routine equipment servicing is easy.

Microsoft Windows Pocket PC Operating System

Remaining profitable in today's business environment requires deploying the latest proven technology. This hardware and software system is easy to use, rugged, and will run other Windows programs.

Point-To-Point Driving Instructions

ARM has partnered with Microsoft to supply driving instructions and maps that will help prevent lost time due to wrong turns and driving by memory. The optional MapPoint software provides the driving and map engine for ARM and SRM.

Field Reporting of Skipped Stops

A new feature of SRM is the ability to allow your drivers to record when a stop is completed or skipped. When indicating a skipped stop, the driver will be prompted for a pre-defined skipped reason code.

Tracks Skipped Equipment

If you are tracking equipment at a stop, you can use SRM to indicate if the equipment was serviced, or indicate that it was skipped and why.

Supports Bar Coding Scanning

Bar coded labels can be placed on individual units indicating their unit number, which allows the Pocket PC to scan the number indicating that service was performed.

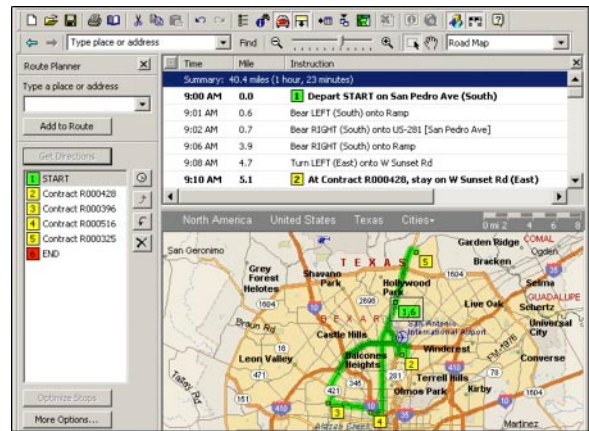
Management Exception Reporting

Management can now easily determine what happened in the field. Once the driver has synchronized the Pocket PC, an exception report can be generated to display which stops or equipment was not serviced and why.

Multiple Routes per Driver

Drivers can download route information for multiple routes onto the Pocket PC, allowing a full day's worth of information to be tracked.

Using the optional Microsoft MapPoint software, *Route and Stop* data can be integrated with the Service Route Management system. Route maps and *Point-To-Point Driving Instructions* make it easy for your drivers to find every stop on their route.



Blytheco - The Premier Sage Software Business Solutions Provider • National Presence, Local Touch • 1.800.4.BLYTHE • www.blytheco.com

Headquartered in San Antonio, Texas, our firm has specialized in the rental industry and accounting software products since 1986.

Since our firm supports both ARM and Sage Software, you can be assured of our experience and expertise in solving your rental business problems.

If you need to improve how your firm approaches rental management, we invite you to evaluate ARM and SRM to determine if they are the right solution for your company.

