



SAGE MAS 90 SAGE MAS 200

CUSTOM OFFICE

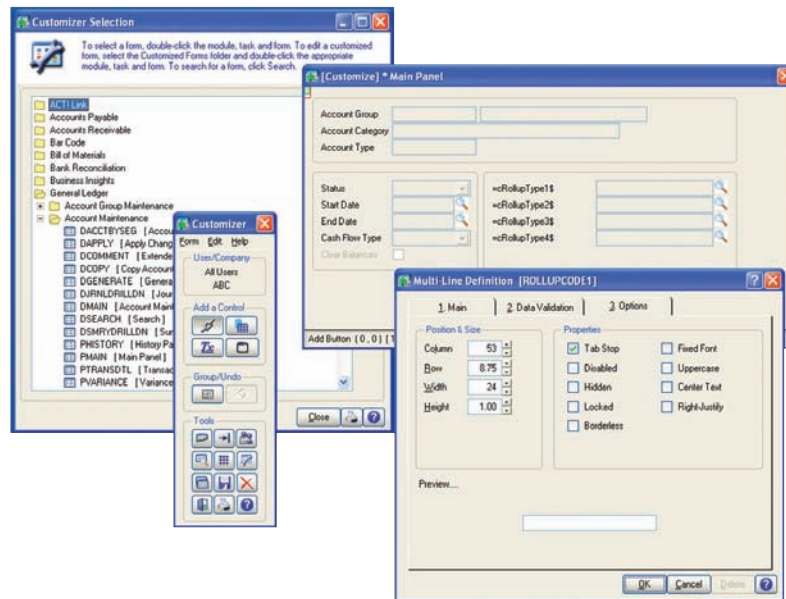
SAGE MAS 90 AND SAGE MAS 200 CUSTOM OFFICE INCLUDES:

■ **MS Office Link**

Automatically merge accounting information with Microsoft Word, Excel, or Exchange software to quickly create custom documents, messages, and attachments.

■ **Customizer**

Modify Sage MAS 90 and Sage MAS 200 screens to work the way you run your business—even add user-defined fields—all without programming.



To stay competitive, you need your accounting software and business productivity software to work together and offer indispensable functions like graphical reporting, integration, customization, and drill-down functionality. The Custom Office module for Sage MAS 90 and Sage MAS 200 ERP systems provides the solution with a suite of tools composed of Customizer, and the MS Office Link, which integrate with the Microsoft Office suite.

The MS Office Link allows you to easily create letters or messages to individual customers or vendors. You can attach documents (such as scanned-in images) to specific records in the product's data files (for example, a photograph to an inventory item or an invoice to the invoice record in Accounts Payable history). Customizer provides user-defined fields (UDFs) that you can easily implement without any special programming skills.

Improve productivity throughout your company with an essential suite of business applications—Sage MAS 90 and 200 Custom Office. Custom Office enables you to make use of the unique business information in your application data files and greatly simplifies the process of creating custom communications to customers and vendors.

Connections

MS Office Link

Since the MS Office Link provides a direct connection between a Sage MAS 90 or 200 task or record and the desired Microsoft Office application, it is perfect for one-time, one-record integration. You can launch the MS Office Link from a button on the appropriate screen.

A set of template documents is included for each Sage MAS 90 and 200 module, such as letters in Word and standard e-mail in Exchange software. The MS Office Link also allows you to access the template documents specific to the task displayed. For example, in customer maintenance you can automatically create a welcome letter, credit limit advisory letter, and dunning letter, while in vendor maintenance you can create a letter requesting a price quotation. Similarly, you'll have access to add and view attachments that are specific to the displayed data record. For Accounts Payable transactions, this might be a scanned-in image of the original invoice; in Inventory Management, it could be a picture of the item.

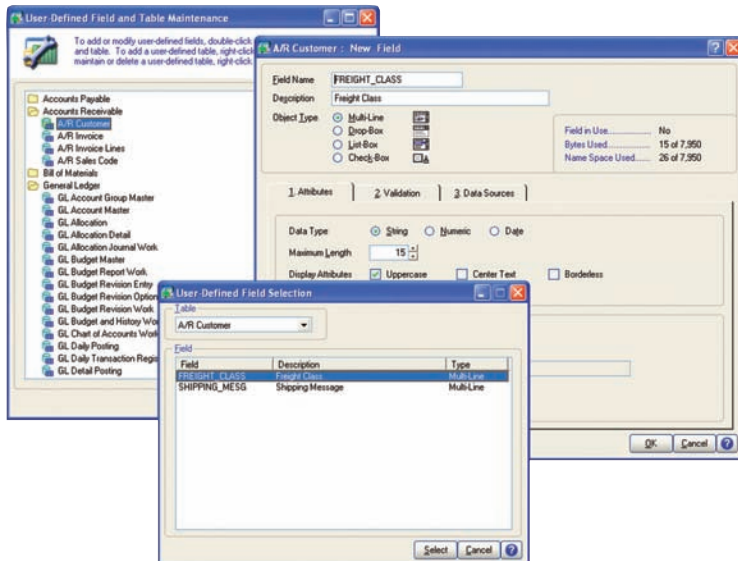


Sage MAS 90 and Sage MAS 200

Custom Office

"We have some distinctive requirements. Adding fields for sales order status and service order information has allowed us to be much more efficient, and track Schleuniger-specific data."

Sean Matulonis
MIS Manager
Schleuniger, Inc.



Create User-Defined Fields with the Customizer.

Forms

Customizer

With Customizer, you can change the appearance of your Sage MAS 90 or 200 screens to match the way you prefer to work, helping to increase productivity by improving data entry speed and accuracy. For example, you can specify default values to reduce keystrokes (for example, default to your local area code in the phone number field). By customizing the screen to ignore unused fields and change tab sequences, you can change the screens to follow the exact order of the fields on an input form. You can also change the default field labels; for example, in a medical practice, it may be more appropriate to use "Patient" than "Customer."

User-defined fields allow you to add your own data fields to masterfiles, even if you have no programming skills. These fields can carry over seamlessly to your reports, orders, and invoices. For example, an extra field you've added for shipping information to your customer masterfile can be included on sales orders and invoices using the integration of Crystal Reports® software for printed forms. User-defined fields are also automatically available for reports created with the Business Insights Reporter.

Expand the functionality of your system by adding a button to screens that will launch application tasks or bring up the Microsoft Windows calculator when you need to add a quick column of figures. You can even create a

button with links to a VB script or J script, which can launch Microsoft Word, and automatically produce a dunning letter with the customer's name and address, or perform any number of tasks. Your custom button can also play back sound annotations to the screen or display the current record.

Areas for Customization

- Sage MAS 90 and 200 screens by company
- Sage MAS 90 and 200 screens by user
- Button appearance, adding bitmaps, and more.
- Buttons for launching tasks from within screens
- Buttons for launching other Windows applications from within screens
- Buttons for pop-up dialog boxes
- DDE links to external programs or scripts
- Default initial values
- Folder tab labels
- Fonts used on screens
- Help references
- Location, size, and appearance of any screen
- Location, size, and appearance of objects on screens
- Message prompts
- Rules for validation logic
- Tab sequences within screens
- Text captions — add text fields
- Tool tips
- User-defined fields and tables

Blytheco - The Premier Sage Software Business Solutions Provider • National Presence, Local Touch • 1.800.425.9843 • www.blytheco.com



56 Technology Drive • Irvine, CA 92618-2301 • 800-854-3415 • www.sagesoftware.com

©2005 Sage Software, Inc. All rights reserved. The Sage Software logo and the products and service names mentioned herein are registered trademarks or trademarks of Sage Software, Inc., or its affiliated entities. Crystal Reports is the registered trademark and technology of Business Objects SA. All other trademarks are the property of their respective owners.

5107900 11/05 05-3806/1105