



Your business in mind.



SAGE PRO

Manufacturing Modules

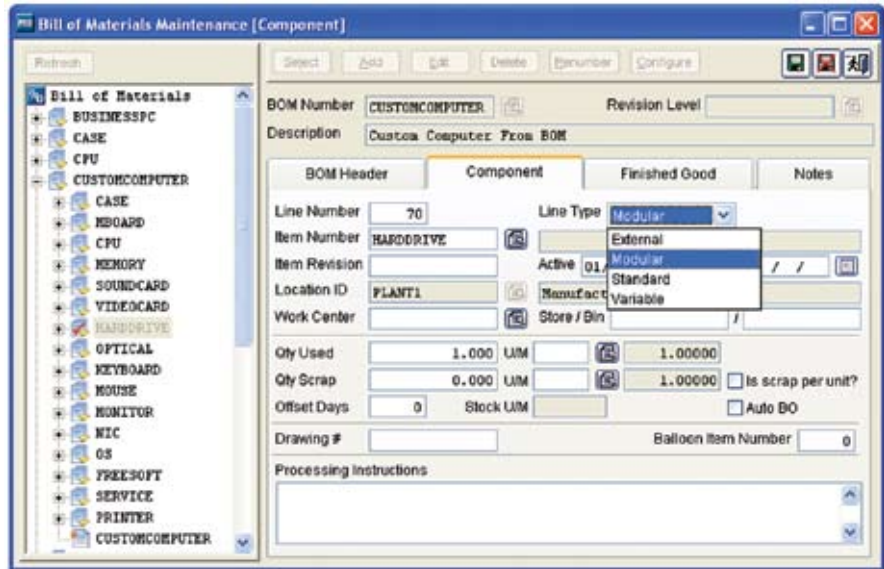
About Sage Software

Sage Software supports the needs, challenges, and dreams of more than 2.6 million small and mid-sized business customers in North America through easy-to-use, scalable, and customizable software and services. Our products support accounting, operations, customer relationship management, human resources, time tracking, merchant services, and the specialized needs of the construction, distribution, healthcare, manufacturing, nonprofit, and real estate industries. Sage Software is a subsidiary of The Sage Group plc, a leading international supplier of accounting and business management software and services. Sage, listed on the London Stock Exchange, now has 5.0 million customers and employs over 10,500 people worldwide.

About Sage Pro ERP

Sage Pro ERP is an award-winning accounting and manufacturing system that can be fully tailored to work the way you do. Proactive, growth-oriented businesses choose Sage Pro for its advanced customization tools, easy access to critical, real-time business information, and full integration with a complete suite of end-to-end business management solutions.

Visit us at www.sageproerp.com or call 800-873-7282 today for more information about Sage Pro ERP.



Support for modular and variable components dramatically decreases the number of bill of materials you maintain.

Sage Pro Manufacturing Modules

Sage Pro offers powerful tools to improve efficiencies within manufacturing process. Designed to automate input measurements and calculate production outputs, Sage Pro delivers the accuracy required to achieve the quick-turn adjustments so critical to staying ahead of your competitors and growing profit margins. Sage Pro can synchronize manufacturing with purchasing, sales and receivables, and accounting, and help move your business along the road to continuous improvement.

Production Entry

The Sage Pro Production Entry module is the foundation of our manufacturing suite. This module provides bills of materials, sales kit, configuration, and backflush processing. Seamless integration enables access to inventory and customer files without having to leave the module. Real-time costing from Inventory Control provides access to current information at all times. Sage Pro Production Entry also delivers advanced kitting and bills of materials configuration capabilities during Order Entry.

Features

- Allows for multi-level bills of materials.
- Includes support for revisions.
- Allows for global change/delete on BOM components.
- Supports modular bill of materials.
- Supports variable bill of materials.
- Supports nested modular bill of materials.
- Allows for phantom bill of materials.
- Includes option to configure BOM during Order Entry.
- Allows kitting during Order Entry or during Order Shipment.
- Includes import bills of materials option.
- Allows bills of materials settings of active, hold, or obsolete.
- Easy customization of key terminology.
- Multiple-level bill of materials displayed in a tree-view menu screen.
- Separate scrap and variance accounts available.



Sage Pro

Manufacturing Modules

Key Reports

- Bills of Materials
- Finished Goods
- Parents
- Components
- Where Used
- Unused Items
- Configurations
- Manufacturing Journal

Work Orders

The Sage Pro Work Orders module teams up with Production Entry to deliver component allocation, work order creation and generation, routing, and Material Requirement Planning (MRP) features. Work Orders provides the necessary tools to manage production orders, inventory, and resources in a manufacturing environment. Enhanced MRP to Purchase Order link and ability to create PO Bids with greater efficiency add additional value to this dynamic manufacturing solution.

Features

- Production orders can be automatically generated from sales order requirements.
- Enter work orders with the option to associate with an order or customer.
- Ability to attach files to work orders.
- Take advantage of the improved MRP to Purchase Order link.
- Automatically close work orders on shipment.
- Generate work orders based on requirements, shortages, or forecast.
- Generate purchase order bids based on shortages, or forecast.
- Option to use routes specifying operations and work centers.
- Set work order status to held, approved, or exploded.
- Supports top, bottom, and smart-level explosion.
- Option to include component allocation with smart explosion.
- Includes option to use finished location for component usage.
- Works with stores, bins, serial numbers, and lot numbers.
- Includes option to specify a job number on the work order.
- Select to automatically create daily completion logs.
- Supports multiple reporting calendars for time-phased requirements.
- Access the bills of materials, customer, and inventory files from Work Orders.
- Complete work orders to update inventory and generate journal entries.
- Ability to easily customize key terminology.
- Update work orders through an import process that links with third-party applications.
- Filter for approve, explode, and complete work orders.
- Support serial numbers in work orders.
- Roll price changes from the configuration screen into orders.
- Add notes to individual work orders.
- Create PO Bids easier and produce work orders that include order quantities, supplier values, and lead times.

Key Reports

- Pro Forma Work Orders
- Work Order Travelers
- Work Orders
- Work in Progress
- Gross MRP

- Net MRP
- Shortages MRP
- Variance Analysis
- Routes
- Finished Goods
- Operations
- Work Centers
- Where Used on Routes

Shop Control

The Sage Pro Shop Control module adds even greater power and flexibility to your manufacturing management arsenal when added to the Production Entry and Work Orders modules. Shop Control provides Manufacturing Resource Planning (MRPII) features such as shop floor capacity scheduling, what-if planning capabilities, and WIP tracking. Plus, you can access your WIP Tracking from within Sage Pro Customer Connect when the two modules are integrated.

Features

- Allows entry of plan orders for what-if scenarios.
- Update and view progress of work order from WIP Tracking screen.
- Import work orders to plan, view, and implement production schedules.
- Access bills of materials, customer, inventory, route, and calendar files from Shop Control.
- Easily customize key terminology.
- Allows access to WIP Tracking screen from Customer Connect.

Key Reports

- Gross Requirements Plan
- Net Requirements Plan
- Shortages Plan
- Plan Order Summary
- Plan Order Detail
- Work Centers

Bills of Materials

Sage Pro Bills of Materials is a cost-effective solution when the full functionality of a complete manufacturing suite is not required. This option is used with Order Entry for kitting of single-level BOMs without allocation or work order generation.

Features

- Allows for single-level bills of materials.
- Includes support for revisions.
- Allows kitting during Order Entry or during Order Shipment.
- Allows bills of materials settings of active, hold, or obsolete.
- Easy customization of key terminology.

Key Reports

- Bills of Materials
- Finished Goods
- Components
- Where Used
- Unused Items
- Configurations

Blytheco - The Premier Sage Software Business Solutions Provider • National Presence, Local Touch • 1.800.4.BLYTHE • www.blytheco.com



6700 Koll Center Parkway, Third Floor • Pleasanton, CA 94566 • 800-873-7282 • www.sagesoftware.com

© 2006 Sage Accpac International, Inc. All rights reserved. Sage Software, Sage Software logos, and all Sage Accpac International product and service names are registered trademarks or trademarks of Sage Accpac International, Inc., or its affiliated entities. All other trademarks are the property of their respective owners.

06-7579 09/06 XXXXXXXX-0906