



SAGE PRO

System Management and Customization Manager

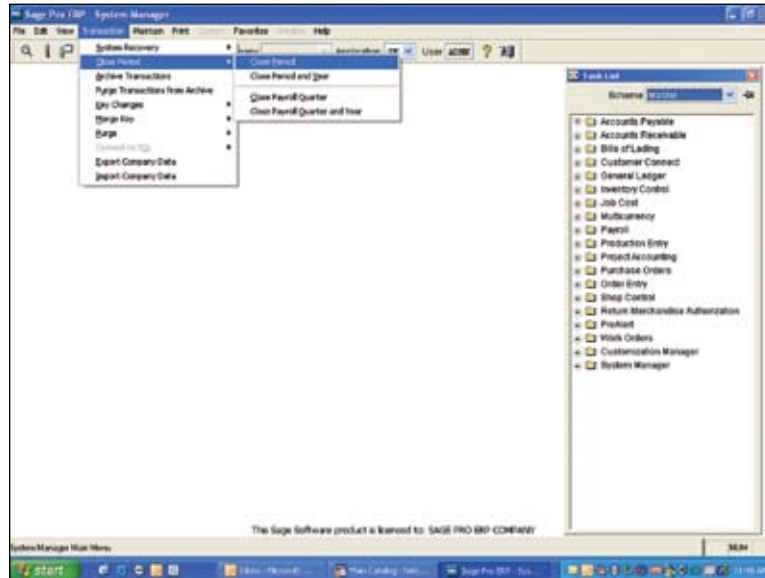
About Sage Software

Sage Software supports the needs, challenges, and dreams of more than 2.6 million small and mid-sized business customers in North America through easy-to-use, scalable, and customizable software and services. Our products support accounting, operations, customer relationship management, human resources, time tracking, merchant services, and the specialized needs of the construction, distribution, healthcare, manufacturing, nonprofit, and real estate industries. Sage Software is a subsidiary of The Sage Group plc, a leading international supplier of accounting and business management software and services. Sage, listed on the London Stock Exchange, now has 5.0 million customers and employs over 10,500 people worldwide.

About Sage Pro ERP

Sage Pro ERP is an award-winning accounting and manufacturing system that can be fully tailored to work the way you do. Proactive, growth-oriented businesses choose Sage Pro for its advanced customization tools, easy access to critical, real-time business information, and full integration with a complete suite of end-to-end business management solutions.

Visit us at www.sageproerp.com or call 800-873-7282 today for more information about Sage Pro ERP.



Flexible period-end and year-end closing routines separate the closing, archiving, and purging of transactions, to allow independent processing.

System Manager

The Sage Pro System Manager module is the control center for the entire Sage Pro ERP system. Sophisticated tools are included in System Manager that ensure data integrity, streamline processing, and deliver enhanced security management. With System Manager, you can configure system and workstation settings, user security, and more. The module's data dictionary provides utilities for viewing and maintaining database files, and enables you to modify and create your own custom databases and indices. Flexible period-end and year-end closing routines enable you to process, archive, and purge transactions on a schedule tailored to fit the way you operate your business.

Features

Desktop Features and Favorites Toolbar

- A new Task List option added to the Desktop enables you to choose a customizable Desktop menu to fit your unique business needs.
- Access DataDrillers from the Favorites Toolbar.
- Custom menus enable you to access as many as ten different user-defined custom options.
- New Data Center icon located in the toolbar enables one-click access to view fields, browse tables, and maintain dictionary attributes.
- Calendar view button added to all date fields.
- Desktop pictures, colors, and graphics can be added to each Company.
- Screens can be resized to allow expanded grids to view more data.

Users/Workstations

- Gain tighter control with user security enhancements (improved SOX Compliance).
- Get more flexibility with an increased User ID field length of six characters.
- Password maintenance lets you control user access by function, time of day, and date range.
- Offers option to encrypt user passwords and names for added security.
- Records and reports user audit trails detailing time-specific information about user actions.
- Lets you designate whether users have read-only access or the ability to also edit various records (e.g., inventory, customers, vendors, and General Ledger accounts).
- New Users Information Settings tab consolidates all user functions and settings in one easy-to-access, tree-view menu.



Sage Pro

System Management and Customization Manager

- User privileges, settings, reports, and data views can be easily selected and copied from one user to another and across companies.
- User-defined custom reports can be assigned to specific users or companies and selected from the option grid when printing.

Fiscal Calendar and Period Close

- Flexible, redesigned Fiscal Calendar includes up to 365 periods:
- Modify structure of existing calendars with the redesigned Fiscal Calendar maintenance.
- Flexible period-end and year-end closing routines separate the closing, archiving, and purging of transactions, to allow independent processing.

Working with Company Data

- Import directly from another Sage Pro installation:
- Enables you to change key values, such as customer, inventory, item, or vendor numbers throughout the system.
- Includes laser printing technology to produce high-quality, low-cost business forms on plain paper.
- System Recovery utilities can update and verify database file structures and indices, clear user flags and file locks, delete unused temporary files, and clear the Error Log.
- Error Log provides System Administrator with powerful tools and information to track down system faults.
- Transaction rollback ensures data integrity and provides the ability to recover from interrupted transactions.
- Expanded Company ID field allows up to 10 alphanumeric characters for an unlimited number of Sage Pro companies.
- Date & Time and Spell Check option buttons added to all Notes fields.
- New Import Data Wizard imports customers, vendors, items, and GL accounts in selected file formats to more easily convert data from other accounting applications.

Data Dictionary

- Rule tables provide data entry validation to ensure data input accuracy.
- Data dictionary stores information about application and custom database files, their fields and indices, data types, and program processes.
- Database containers ensure security and seamless access for better integration of third-party products.
- Data Dictionary lets you expand key fields to user-defined lengths. Screens and reports have been designed to accommodate lengthened fields.

DataDrillers

- Data views provide instant custom-defined views of your data from any file in the data dictionary using the DataDriller.

Key Reports

Each report can be customized from a matrix of user-selected options: displayed, printed, exported to a spreadsheet, faxed, sent by e-mail, or saved on disk.

Some of the reports included are:

- User Activity Report
- Disk Usage Report
- Key Change Audit Log
- Key Change List
- Setup Information Report

Executive Dashboard (exclusively for Sage Pro 200)

The Sage Pro Executive Dashboard gives you and your executives the ability to check the pulse of your company in seconds. Instant access to business intelligence allows you to easily identify issues and work to prevent problems before they happen. You and your managers will appreciate the Dashboard's accessibility—viewable either at the office or over the Internet at any time. You can quickly spot issues, filter through module information, drill down to source transactions, and communicate with stakeholders all from one central location.

Features

- Save time digging through data and easily prioritize your most pressing issues. Click through five smart tabs and you're instantly updated on the health of your business.
- Chart trends and track progress for a variety of important factors, using the Favorite Views tab.
- Quickly get the information you want in a format you understand.
- Stay up-to-the-minute with the Business Status Report (BSR) screen, which includes cash balances, forecasts, and inventory values.
- Funnel data from your Accounts Payable, Accounts Receivable, Order Entry, and Purchase Orders modules into one handy, at-a-glance view. From there, you can print or drill down into details with ease.
- While working through a Web browser, use Contact view to look up your customer and vendor information through easy-to-sort lists.
- The Message Center allows you to communicate proactively with your team. Now with remote access through the Dashboard you gain even more flexibility to focus on your business. Plus, check your messages, return calls, and track order placement—all from one screen.

Customization Manager

The Sage Pro Customization Manager module enables you to customize your Sage Pro screens and preserve your changes in future builds. This powerful tool is designed to enable you to make user-specific changes to your Sage Pro screens without requiring access to source code. This will save you from having to redo modifications every time you update to a new version.

Features

- Create custom screen forms as sub-classes of existing forms and make custom screens available to specific users /companies.
- Create Microsoft Visual FoxPro expressions that define the conditions in which a particular custom form is to be launched.
- Enables Solution Providers to deploy custom screen forms without changing the existing Sage Pro form.
- Provides maximum flexibility to change screen object properties such as field name labels, fonts, colors, field sizes, etc. on Sage Pro screen forms.
- Enables Customization Manager to be added to the Favorites toolbar, providing access to the module from within any other Sage Pro application.
- Enables export and import of customizations between companies.

Blytheco - The Premier Sage Software Business Solutions Provider • National Presence, Local Touch • 1.800.4.BLYTHE • www.blytheco.com



6700 Koll Center Parkway, Third Floor • Pleasanton, CA 94566 • 800-873-7282 • www.sagesoftware.com

© 2006 Sage Accpac International, Inc. All rights reserved. Sage Software, Sage Software logos, and all Sage Accpac International product and service names are registered trademarks or trademarks of Sage Accpac International, Inc., or its affiliated entities. All other trademarks are the property of their respective owners.

06-7570 09/06 XXXXXXXX-0906