



## What's New in SageCRM v6.1

The latest release of SageCRM, version 6.1, is designed to make your workday easier and more productive. Offering improved Microsoft® Outlook® integration, new data management and field customization functions, enhanced quote and order capabilities, and compatibility with Microsoft Office 2007 and Windows Vista™, SageCRM is more user-friendly than ever before.

### BENEFITS

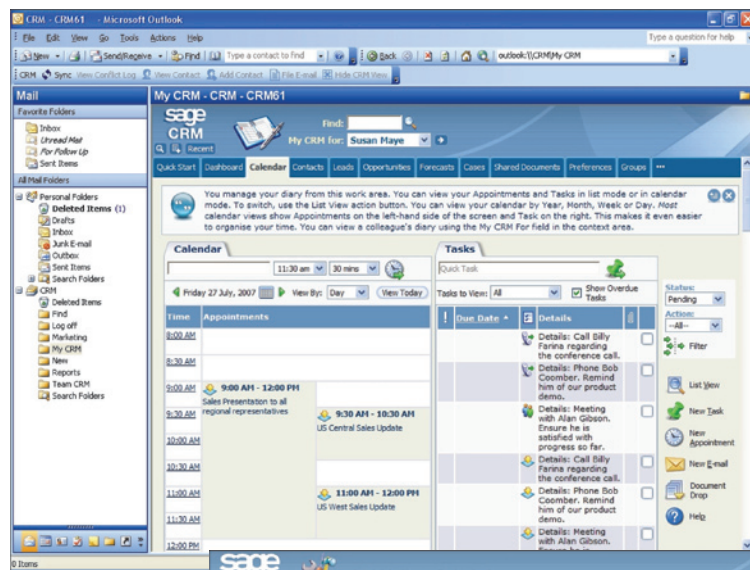
More seamless integration with Outlook enables users to increase productivity in both systems

Enhanced SageCRM calendar interface allows users to view overlapping appointments for a clearer, cleaner display of information

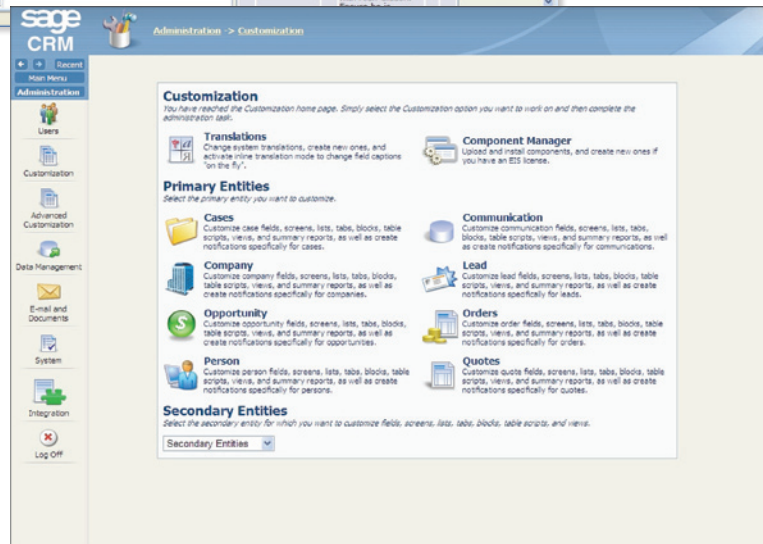
New customization options enable greater field and button customization to meet your unique business needs

Compatibility with Microsoft Office 2007, Windows Vista, and 64-bit operating systems let you update to the latest solutions

Find, group, and manage quotes and orders with greater ease and efficiency



◀ Redesigned calendar day view now allows you to view overlapping appointments.



◀ Quotes and orders are now primary entities and can support Find, Advanced Find, Keyword Search, and more, making it easier than ever to find, group, and manage quotes and orders

Feature	Description	Benefit
<b>Microsoft Outlook Integration</b>	SageCRM now has deeper integration with Microsoft Outlook, including: <ul style="list-style-type: none"> <li>• New wizard-driven Outlook plug-in for easy deployment</li> <li>• Improved synchronization conflict handling</li> <li>• Meeting organizer is now displayed on the SageCRM meeting screen</li> <li>• Improved multi-user appointment handling</li> <li>• New file and view e-mail button to allow users to immediately respond to e-mail from within SageCRM</li> </ul>	Users will benefit from a more seamless integration with Microsoft Outlook, giving them the power to do more, from managing e-mail to scheduling meetings.
<b>Enhanced SageCRM Calendar</b>	The SageCRM Calendar day view has been redesigned to allow side-by-side display of overlapping appointments.	Easier to use calendar interface with a cleaner and clearer display of information.
<b>Customization Capabilities</b>	<ul style="list-style-type: none"> <li>• New Field Deletion option gives SageCRM developers and administrators a code-free means to delete custom fields directly through the user interface.</li> <li>• Button Group customization now allows administrators the option of adding new groups of button to the work area.</li> </ul>	System administrators now have the ability to further customize SageCRM to reflect their organizations' unique business processes, making the system easier for all users.
<b>Windows Vista and Office 2007 Compatibility</b>	SageCRM now works with Windows Vista operating system and Microsoft Office 2007.	Sage CRM is up-to-date with the latest Microsoft release and continues to offer support for a range of Microsoft Office versions.
<b>Quotes and Orders</b>	Quotes and orders now have primary entity properties to support Find, Advanced Find, Keyword Search, Groups, Recent List, Top Content, Tab Groups, and Notifications. A new free text item button allows the addition of a free text line item to a quote or order, while the new comment line item allows users to add notes to quotes and orders.	Quotes and orders now behave like all the other primary entities such as Company, Person, Case, Opportunity, Lead, etc., and make finding, grouping, and managing quotes and orders easier and more efficient.
<b>64-bit Operation System Compatibility</b>	It is now possible to easily install SageCRM on a 64-bit Microsoft Windows 2003 server.	Offers organizations the flexibility of using either 32-bit or 64-bit servers.



The Premier Sage Software Business Partner

**Corporate Offices**

**Orange County, California**  
23161 Mill Creek Drive  
Laguna Hills, California 92653  
Phone: (949) 583.9500  
Toll Free: (800) 425.9843  
Fax: (949) 583.0649

[www.blytheco.com](http://www.blytheco.com)

**Atlanta, Georgia**  
1100 Johnson Ferry Road, Ste. 450  
Atlanta, Georgia 30342  
Phone: (404) 841.6240  
Toll Free: (800) 455.1368  
Fax: (404) 841.6243

[solutions@blytheco.com](mailto:solutions@blytheco.com)

**Sage Software Business Partner of the Year**

**Complete Sage Software Solutions**

Sage MAS 500 ◊ Sage MAS 200 ◊ Sage MAS 90  
Sage BusinessWorks ◊ Sage SalesLogix CRM ◊ ACT! by Sage  
Sage ABRA HRMS ◊ Sage FAS ◊ Sage MIP Fund Accounting & Fundraising

**Offices in these cities & states:**

Atlanta, GA ◊ Chicago, IL ◊ Los Angeles, CA ◊ Orange County, CA ◊ Tampa, FL  
Colorado ◊ Missouri ◊ New Jersey ◊ Ohio ◊ Oklahoma ◊ Pennsylvania ◊ Tennessee  
Texas ◊ Washington

National Presence - Local Touch



End-to-end solutions. Expert advice.  
Ongoing support. That's Sage 360®.

Sage Software supports the needs, challenges, and dreams of 2.7 million small and mid-sized business customers in North America through easy-to-use, scalable and customizable software and services. Sage Software is a subsidiary of The Sage Group plc, a leading international supplier of business management software and services formed in 1981 and listed on the London Stock Exchange since 1989.

**sage**  
software

Your business in mind.

© 2007 Sage Software Inc. Sage Software and Sage CRM Solutions are registered trademarks of Sage Software, Inc. All rights reserved. All other trademarks and copyrights are the property of their respective holders.

07-06956