

---

## Work Order Determination Report

WO-1033

### Overview

This Extended Solution to the Work Order module adds a new Work Order Determination Report.

### Installation

Before installing this Extended Solution, please verify that the version level(s) printed on the CD label are the same as the version level(s) of the MAS 90 MAS 200 module(s) you are using. For further information, please see the Upgrades and Compatibility section below. Check your Shipping Manifest for a complete list of Extended Solutions shipped.

For detailed installation instructions, please refer to the Sage website at:

[http://support.sagesoftwareonline.com/mas/extended\\_solutions/main.cfm](http://support.sagesoftwareonline.com/mas/extended_solutions/main.cfm)

### *Installing Your Extended Solutions under Windows*

#### **From a CD**

If you have the *autorun* function turned on for your PC, the installation program will start up automatically. If not, find the **autorun.exe** file on your CD-ROM drive and double-click it to start the installation program. Follow the on-screen instructions.

#### **From the Sage FTP site**

When your Extended Solution is ready to be downloaded, you will receive an email from 'extendedsolutions.na@sage.com' telling you that it is ready. The email will contain the Customer Name, Cross Reference, a case-sensitive Password, a link via which you can download your Extended Solution, instructions and a Shipping Manifest. If you have any problems with this order, please email [extendedsolutions.na@sage.com](mailto:extendedsolutions.na@sage.com) and we will assist you during normal business hours.

### *Extended Solutions Control Center*

Installing any Extended Solution will add an Extended Solutions Control Center to the MAS 90 MAS 200 Library Master Utilities menu. When you open the Control Center, the following options will be available:

- Extended Solutions Manuals
- Remove Extended Solutions
- Unlock Extended Solutions
- Merge Installation Files
- Extended Solutions Setup options

## Extended Solutions

**Setup**

Once the disk is installed, you will need to access the Work Order options screen. After the option screens have been displayed, a Setup screen for this Extended Solution will appear. Check the 'Enable Extended Solution' box to activate this Extended Solution (Figure 1). The manual for this Extended Solution, if it has been installed, can be viewed by clicking the 'Manual' button next to the 'Enable Extended Solution' check box. It can also be viewed via the Extended Solutions Control Center (see Installation, above).

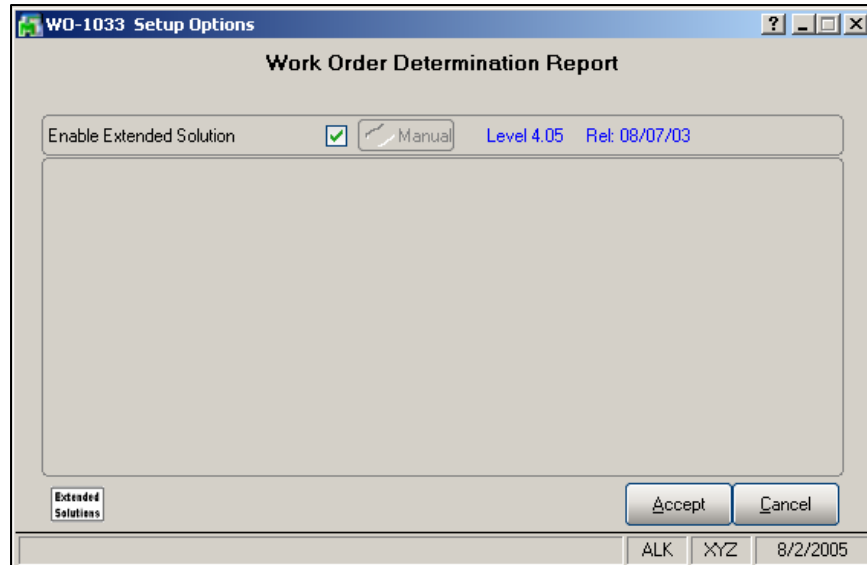


Figure 1

**Role Maintenance**

The following Task has been added to Work Order, Reports/Forms:

- Work Order Determination Report

You should visit this Setup screen after each upgrade or reinstallation of this Extended Solution.

**Operation**

Available from the Work Order Reports menu, the Work Order Determination Report has the following selection criteria (Figure 2):

**ITEM NUMBER RANGE**  
**S/O SHIP DATE RANGE**  
**W/O RELEASE DATE RANGE**

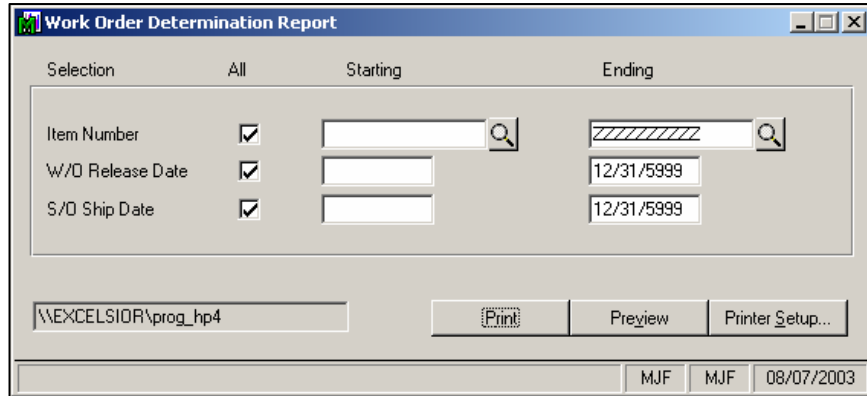


Figure 2

Per Item Number, the Report Output columns are:

- S/O # or W/O #
- Customer Number or W/O Comment
- S/O Ship Date or blank
- Quantity on Sales Order
- Quantity On Hand
- Quantity on Work Order
- W/O Release Date
- Quantity to Make\*

The report will break and subtotal by Item Number, sorting Sales Orders to the top in Ship Date Order, followed by Work Orders (Figure 3).

Work Order Determination Report							MJF Company Code
Work Order / Sales Order	Customer Number / W/O Status Comment	S/O Ship Date	Quantity on Sales Order	Quantity On Hand	Quantity on Work Order	W/O Else Date	Quantity to Make
STD Standard Part							
0002290	00-0000000		1.00	2000,547.00-			2000,548.00
0001800	00-0000000	12/30/02	4.00	2000,547.00-			2000,551.00
0001770	00-0000000	12/31/02	1,000.00	2000,547.00-			2001,547.00
0001910	00-0000000	12/31/02	1.00	2000,547.00-			2000,548.00
0001930	00-0000000	01/13/03	1.00	2000,547.00-			2000,548.00
0001950	00-0000000	01/23/03	1.00	2000,547.00-			2000,548.00
0001960	00-0000000	02/05/03	2.00	2000,547.00-			2000,549.00
0001970	00-0000000	02/05/03	5.00	2000,547.00-			2000,552.00
0002050	00-0000000	03/11/03	51.00	2000,547.00-			2000,598.00
0002170	00-0000000	07/01/03	1.00	2000,547.00-			2000,548.00
0002280	00-0000000	07/09/03	969.00	2000,547.00-			2001,516.00
0002300	00-0000000	08/25/03	1.00	2000,547.00-			2000,548.00
		Total	2,037.00	2000,547.00-	0.00		2002,584.00

Figure 3

\*The report provides a running total on each line for a 'Quantity to Make' using the following calculation: **Total On S/O – Qty on Hand – Qty On W/O.**

An Item and all of its detail prints only **if** the total 'Quantity to Make' is greater than zero.

### Upgrades and Compatibility

The installation CD is labeled with the version of the MAS 90 MAS 200 module for which this Extended Solution was prepared. This Extended Solution will check its compatibility with the appropriate MAS 90 MAS 200 modules and will be disabled if an incompatibility is found. If you upgrade your MAS 90 MAS 200 modules, this Extended Solution must be upgraded as well. Your MAS 90 MAS 200 dealer can supply this upgrade.

### Documentation

Only changes made to the standard operation of MAS 90 MAS 200 have been documented in this manual. Operations not documented in this manual are standard procedures of MAS 90 MAS 200 processing. Standard MAS 90 MAS 200 processes, data entry screens, inquiry screens, reports, updates, etc., have not been changed unless addressed in this document.

Parts of this document may refer to the *Specific Purpose Rule*. When referenced, the described feature was developed for a specific client to its specifications and may not conform to generally accepted MAS 90 MAS 200 standards and procedures. These features may or may not benefit you in your application of MAS 90 MAS 200.

### Acknowledgments

© 2005 Sage Software, Inc. All rights reserved. Sage Software, MAS 90 and MAS 200 are registered trademarks or trademarks of Sage Software, Inc. All other trademarks are the property of their respective owners.