

---

## Work Order Integration with 35 Option Categories

WO-1032

### Overview

This Extended Solution to the Work Order module adds enhanced support for BM-1042: *35 Option Categories* to all Work Order programs.



Sage Software Extended Solution BM-1042: *35 Option Categories* must be installed and enabled for this Extended Solution to function.

### Installation

Before installing this Extended Solution, please verify that the version level(s) printed on the CD label are the same as the version level(s) of the MAS 90 MAS 200 module(s) you are using. For further information, please see the Upgrades and Compatibility section below. Check your Shipping Manifest for a complete list of Extended Solutions shipped.

For detailed installation instructions, please refer to the Sage website at:

[http://support.sagesoftwareonline.com/mas/extended\\_solutions/main.cfm](http://support.sagesoftwareonline.com/mas/extended_solutions/main.cfm)

### ***Installing Your Extended Solutions under Windows From a CD***

If you have the *autorun* function turned on for your PC, the installation program will start up automatically. If not, find the **autorun.exe** file on your CD-ROM drive and double-click it to start the installation program. Follow the on-screen instructions.

### **From the Sage FTP site**

When your Extended Solution is ready to be downloaded, you will receive an email from 'extendedsolutions.na@sage.com' telling you that it is ready. The email will contain the Customer Name, Cross Reference, a case-sensitive Password, a link via which you can download your Extended Solution, instructions and a Shipping Manifest. If you have any problems with this order, please email [extendedsolutions.na@sage.com](mailto:extendedsolutions.na@sage.com) and we will assist you during normal business hours.

### ***Extended Solutions Control Center***

Installing any Extended Solution will add an Extended Solutions Control Center to the MAS 90 MAS 200 Library Master Utilities menu. When you open the Control Center, the following options will be available:

- Extended Solutions Manuals
- Remove Extended Solutions
- Unlock Extended Solutions
- Merge Installation Files
- Extended Solutions Setup options

## Extended Solutions

**Setup**

Once the disk is installed, you will need to access the Work Order options screen. After the option screens have been displayed, a Setup screen for this Extended Solution will appear. Check the 'Enable Extended Solution' box to activate this Extended Solution (Figure 1). The manual for this Extended Solution, if it has been installed, can be viewed by clicking the 'Manual' button next to the 'Enable Extended Solution' check box. It can also be viewed via the Extended Solutions Control Center (see Installation, above).

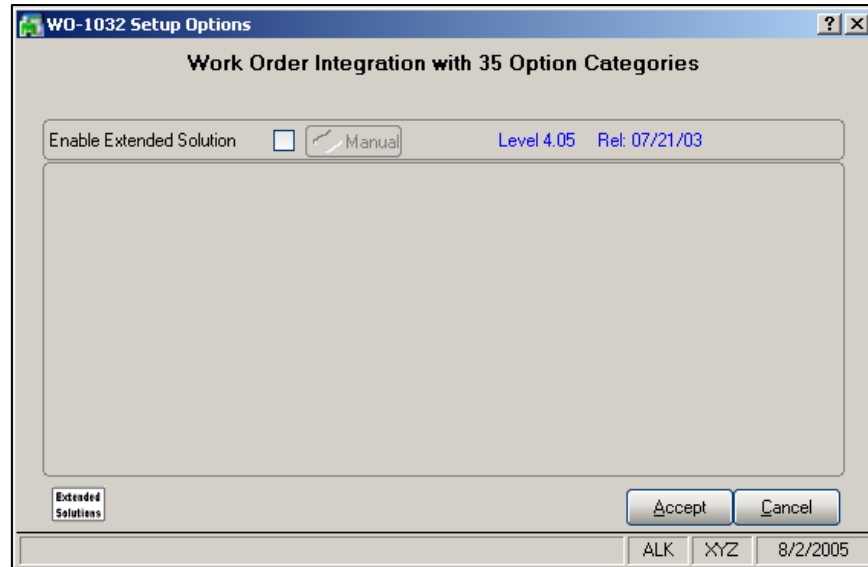


Figure 1

You should visit this Setup screen after each upgrade or reinstallation of this Extended Solution.

**Operation**

This Extended Solution allows the user access to the additional Option Categories of BM-1042: *35 Option Categories* in all Work Order programs. It supports printing of the additional Option Categories on the graphical Picking Sheet and Traveler forms.

This Extended Solution changes these menu options:

- Work Order Entry
- Work Order Transaction Entry
- Work Order Purge
- Work Order Inquiry
- Work Order History Inquiry
- Work Order Transaction Journal
- Open Work Order Report
- Work Order Traveler Printing
- Work In Process Report
- On Demand Cost Ledger

## Extended Solutions

Work Order History Report  
 Picking Sheet Printing  
 Work Order Label Printing

Please refer to the BM-1042 manual for more information regarding additional Option Categories.

## Forms

### Graphical Forms

The following fields have been added to the following Crystal Work Table files:

<i>File</i>	<i>Description</i>	<i>Fields</i>
WO_24	CRW Picking Sheet	AdditionalOptionCodes
WO_28	CRW Traveller	AdditionalOptionCodes

There may be additional fields available for graphical forms printing that are defined to non-Work Table files. Please refer to the Crystal Reports section below.

## Visual Integrator

The files listed below have been added or changed in the Data Dictionary by this Extended Solution for Visual Integrator purposes.

<i>New File:</i>	<i>Field:</i>
WO.MSTR_11	ADDL_OPT_CODES
WO.TMSTR_2	ADDL_OPT_CODES
WO.HSTHDR2	ADDL_OPT_CODES

The Data Dictionary may contain other files and data fields that are not available without their corresponding Sage Software Extended Solutions installed.

## ODBC Dictionary

The files listed below have been added or changed in the ODBC Dictionaries by this Extended Solution for Crystal Reports purposes.

<i>File:</i>	<i>Description</i>	<i>Field:</i>
WO_A1	Work Order Header 11	AdditionalOptionCodes
WO_A5	Template Master Header 11	AdditionalOptionCodes
WO_AI	Label Fill Report Selectn 2	AdditionalOptionCodes
WO_AL	Work Order History Header 2	AdditionalOptionCodes

Be aware that the ODBC Dictionaries may contain other files and data fields that will be unavailable without their corresponding Extended Solutions installed.

### Upgrades and Compatibility

The installation CD is labeled with the version of the MAS 90 MAS 200 module for which this Extended Solution was prepared. This Extended Solution will check its compatibility with the appropriate MAS 90 MAS 200 modules and will be disabled if an incompatibility is found. If you upgrade your MAS 90 MAS 200 modules, this Extended Solution must be upgraded as well. Your MAS 90 MAS 200 dealer can supply this upgrade.

### Documentation

Only changes made to the standard operation of MAS 90 MAS 200 have been documented in this manual. Operations not documented in this manual are standard procedures of MAS 90 MAS 200 processing. Standard MAS 90 MAS 200 processes, data entry screens, inquiry screens, reports, updates, etc., have not been changed unless addressed in this document.

Parts of this document may refer to the *Specific Purpose Rule*. When referenced, the described feature was developed for a specific client to its specifications and may not conform to generally accepted MAS 90 MAS 200 standards and procedures. These features may or may not benefit you in your application of MAS 90 MAS 200.

### Acknowledgments

© 2005 Sage Software, Inc. All rights reserved. Sage Software, MAS 90 and MAS 200 are registered trademarks or trademarks of Sage Software, Inc. All other trademarks are the property of their respective owners.