

---

## 'Drop Ship' Warehouse for SO and PO

SO-1183

### Overview

This Extended Solution allows for transactions to be made in the Inventory module for items which have been drop shipped. The user will not check the DS box in Sales Order and will not create a 'Drop Ship' type Purchase Order. Instead they will reference a setup specific warehouse on the sales order and the purchase order. When this warehouse is used on a sales order line you will have access to the Unit Cost field. When this warehouse is used on a standard purchase order, you will be allowed to create the purchase order from a sales order.

### Installation

Before installing this Extended Solution, please verify that the version level(s) printed on the CD label are the same as the version level(s) of the MAS 90 MAS 200 module(s) you are using. For further information, please see the Upgrades and Compatibility section below. Check your Shipping Manifest for a complete list of Extended Solutions shipped.

For detailed installation instructions, please refer to the Sage website at:

[http://support.sagesoftwareonline.com/mas/extended\\_solutions/main.cfm](http://support.sagesoftwareonline.com/mas/extended_solutions/main.cfm)

### ***Installing Your Extended Solutions under Windows From a CD***

If you have the *autorun* function turned on for your PC, the installation program will start up automatically. If not, find the **autorun.exe** file on your CD-ROM drive and double-click it to start the installation program. Follow the on-screen instructions.

### ***From the Sage FTP site***

When your Extended Solution is ready to be downloaded, you will receive an email from 'extendedsolutions.na@sage.com' telling you that it is ready. The email will contain the Customer Name, Cross Reference, a case-sensitive Password, a link via which you can download your Extended Solution, instructions, and a Shipping Manifest. If you have any problems with this order, please email [extendedsolutions.na@sage.com](mailto:extendedsolutions.na@sage.com) and we will assist you during normal business hours.

### ***Extended Solutions Control Center***

Installing any Extended Solution will add an Extended Solutions Control Center to the MAS 90 MAS 200 Library Master Utilities menu. When you open the Control Center, the following options will be available:

- Extended Solutions Manuals
- Remove Extended Solutions
- Unlock Extended Solutions
- Merge Installation Files
- Extended Solutions Setup options

## Extended Solutions

**Custom Office**

If you customize your MAS 90 MAS 200, then you must run the Update Utility *every time* you install an Extended Solution.

**Setup**

Once the disk is installed, you will need to access the Sales Order Setup menu option screen. After the standard MAS 90 MAS 200 option screens have been displayed, a Setup screen for this Extended Solution will appear. Check the 'Enable Extended Solution' box to activate this Extended Solution (Figure 1). The manual for this Extended Solution, if it has been installed, can be viewed by clicking the 'Manual' button next to the 'Enable Extended Solution' check box. It can also be viewed via the Extended Solutions Control Center (see Installation, above).

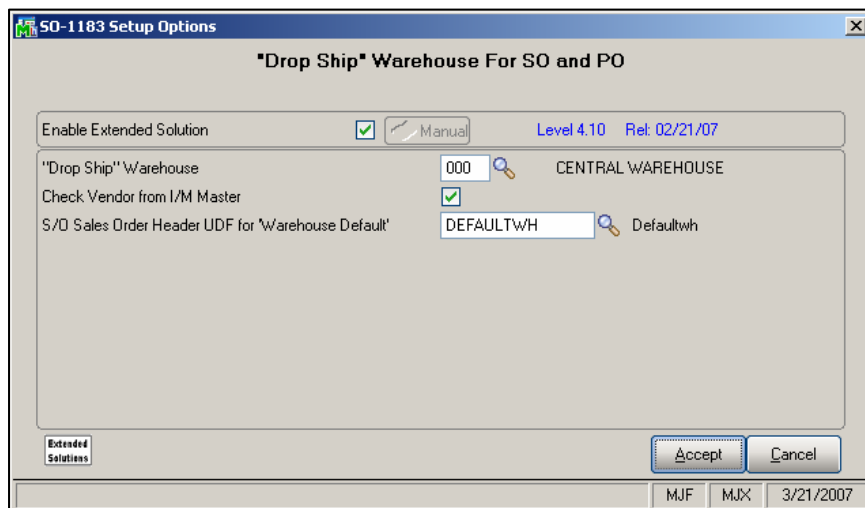


Figure 1

Answer the following prompts:

**DROP SHIP WAREHOUSE:** Specify the warehouse code that will be used to designate a drop ship transaction.

**CHECK VENDOR FROM I/M MASTER:** Check this box if you wish to create P/O lines for only those S/O lines with an entry in the Item Vendors Masterfile which matches the Vendor on the P/O.

**S/O SALES ORDER HEADER UDF FOR 'WAREHOUSE' DEFAULT':** Specify a Custom Office S/O Header checkbox type UDF if you wish to default the Order's header warehouse to the 'Drop Ship' warehouse when the UDF is checked.

You should visit this Setup screen after each upgrade or reinstallation of this Extended Solution.

## Operation

### *Sales Order Entry*

During Sales Order Line entry, enter the Setup-specified 'Drop Ship' Warehouse on the line if you want to denote that the line is a drop ship. Do not check the 'DS' flag. When this warehouse is referenced on the line, the Unit Cost field will be available for edit.

If you specified a 'Warehouse Default' UDF, each Sales Order whose UDF is checked will default its 'Whse' field on the Order Header to the setup specified 'Drop Ship' Warehouse.

### *Sales Journal Update*

During Sales Journal update, the line's Unit Cost will be used unless it is set to zero. In the event that the Unit Cost is zero, standard MAS 90 MAS 200 will attempt to locate a non-zero Unit Cost from the Inventory Masterfile per the standard MAS 90 MAS 200 costing hierarchy.

### *Purchase Order Entry*

Standard Order type Purchase Order entry has been modified with a curved arrow button located in the upper-right corner of the header screen (Figure 2). It will allow for a toggle between the entry of a Sales Order Number and a Master/Repeating P/O Number.

Figure 2

When a Sales Order Number is selected

- The Purchase Order Ship-To information will default from the Sales Order Ship-To information
- If 'Check Vendor from Item Master' was left blank, then all Inventory line items which reference the Drop Ship warehouse on the Sales Order will be copied over. If you

## Extended Solutions

checked the Setup option, 'Check Vendor from Item Master,' then only those Sales Order lines that list the Vendor on this P/O as one of their specified Vendors in the Vendor Items Masterfile as well as reference the Drop Ship warehouse will be copied over. In either case the Unit Cost specified on the Sales Order line will default to the Purchase Order line.



Sales Order lines with the Drop Ship box checked will not transfer to the Purchase Order when creating a Purchase Order as described above.

### ODBC Dictionary

The files listed below have been added or changed in the ODBC Dictionaries by this Extended Solution for Crystal Reports purposes.

<i>File:</i>	<i>Description</i>	<i>Field:</i>
PO1	Purchase order Entry Header	SalesOrderNumber

Be aware that the ODBC Dictionaries may contain other files and data fields that will be unavailable without their corresponding Extended Solutions installed.

### What's New

*With the 03-23-07 release:*

- Converted to Business Framework

### Upgrades and Compatibility

The installation CD is labeled with the version of the MAS 90 MAS 200 module for which this Extended Solution was prepared. This Extended Solution will check its compatibility with the appropriate MAS 90 MAS 200 modules and will be disabled if an incompatibility is found. If you upgrade your MAS 90 MAS 200 modules, this Extended Solution must be upgraded as well. Your MAS 90 MAS 200 dealer can supply this upgrade.

### Documentation

Only changes made to the standard operation of MAS 90 MAS 200 have been documented in this manual. Operations not documented in this manual are standard procedures of MAS 90 MAS 200 processing. Standard MAS 90 MAS 200 processes, data entry screens, inquiry screens, reports, updates, etc., have not been changed unless addressed in this document.

Parts of this document may refer to the *Specific Purpose Rule*. When referenced, the described feature was developed for a specific client to its specifications and may not conform to generally accepted MAS 90 MAS 200 standards and procedures. These features may or may not benefit you in your application of MAS 90 MAS 200.

SAGE MAS 90

SAGE MAS 200

Extended Solutions

### **Acknowledgments**

© 2005 Sage Software, Inc. All rights reserved. Sage Software, MAS 90 and MAS 200 are registered trademarks or trademarks of Sage Software, Inc. All other trademarks are the property of their respective owners.