

---

## Ship-To/Ship-Via by Line Item

SO-1067

### Overview

This Extended Solution to the Sales Order module adds the Ship To Code and the Ship Via Shipping Code to the Sales Order and S/O Invoice detail line.



Starship integration is not supported.

### Installation

Before installing this Extended Solution, please verify that the version level(s) printed on the CD label are the same as the version level(s) of the MAS 90 MAS 200 module(s) you are using. For further information, please see the Upgrades and Compatibility section below. Check your Shipping Manifest for a complete list of Extended Solutions shipped.

For detailed installation instructions, please refer to the Sage website at:

[http://support.sagesoftwareonline.com/mas/extended\\_solutions/main.cfm](http://support.sagesoftwareonline.com/mas/extended_solutions/main.cfm)

### ***Installing Your Extended Solutions under Windows From a CD***

If you have the *autorun* function turned on for your PC, the installation program will start up automatically. If not, find the **autorun.exe** file on your CD-ROM drive and double-click it to start the installation program. Follow the on-screen instructions.

### **From the Sage FTP site**

When your Extended Solution is ready to be downloaded, you will receive an email from 'extendedsolutions.na@sage.com' telling you that it is ready. The email will contain the Customer Name, Cross Reference, a case-sensitive Password, a link via which you can download your Extended Solution, instructions, and a Shipping Manifest. If you have any problems with this order, please email [extendedsolution.na@sage.com](mailto:extendedsolution.na@sage.com) and we will assist you during normal business hours.

### ***Extended Solutions Control Center***

Installing any Extended Solution will add an Extended Solutions Control Center to the MAS 90 MAS 200 Library Master Utilities menu. When you open the Control Center, the following options will be available:

- Extended Solutions Manuals
- Remove Extended Solutions
- Unlock Extended Solutions
- Merge Installation Files
- Extended Solutions Setup options

### Custom Office

If you customize your MAS 90 MAS 200, then you must run the Update Utility *every time* you install a Sage Software Extended Solution.

### Setup

Upon completion of software installation, you will need to access Extended Solutions Setup from the Sales Order Setup menu. Select this part number and the Setup screen for this Extended Solution will appear (Figure 1). Check the 'Enable Extended Solution' box to activate this Extended Solution. The manual for this Extended Solution can be viewed by clicking the 'Manual' button next to the 'Enable Extended Solution' check box. It can also be viewed via the Extended Solutions Control Center (see Installation, above).

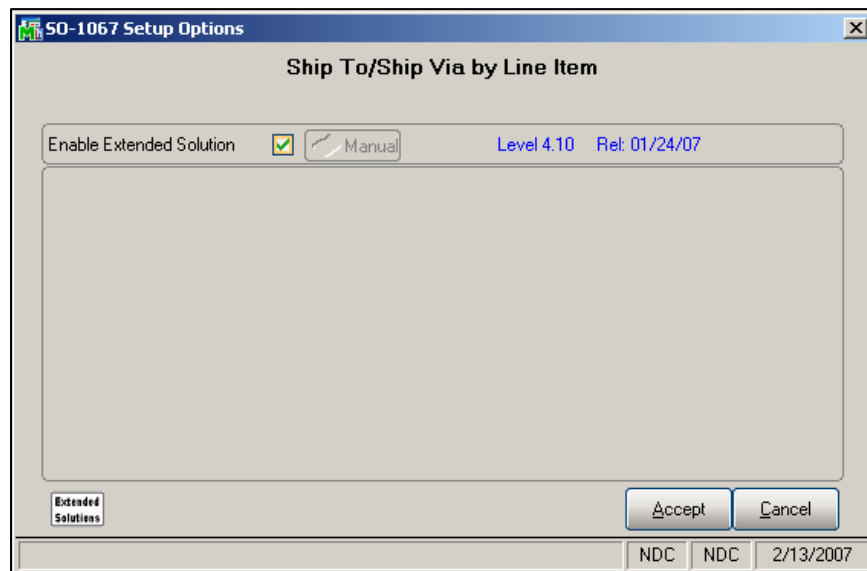


Figure 1

You should visit this Setup screen after each upgrade or reinstallation of this Extended Solution.

### Operation

#### *Sales Order and Invoice Data Entry*

Two new fields for Ship To Code and Ship Via Shipping Code have been added to the secondary grid (Figure 2). When a new line is added, the Ship-To Code and Ship Via Code default to the values entered on the header screen, but can be overridden.

Extended Solutions

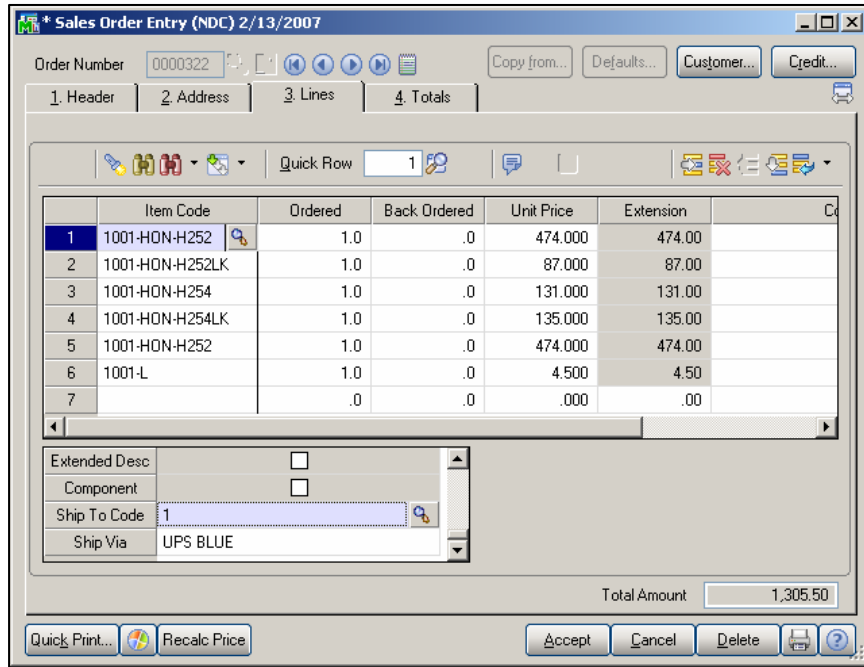


Figure 2

Ship To Maintenance has been added to the Last Purchase Price button's drop down menu (Figure 3). Click this and you will be presented with the Customer's Ship To Maintenance and you can add or edit existing entries.

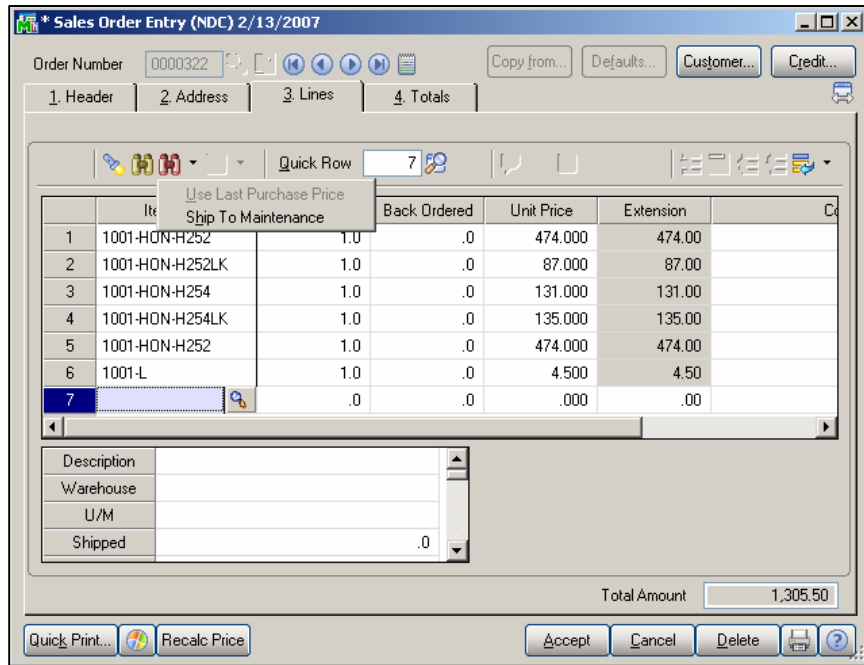


Figure 3

## Extended Solutions

*Shipping Data Entry*

Ship To Code and Ship Via Shipping Code have been added to the secondary grid as display-only fields (Figure 4). As an item is shipped, it will be sorted to a package with the same Ship To/Ship Via, however additional packages can be created for each Ship To/Ship Via.

Item Code	Ordered	Shipped	Back Ordered	Comment
1 1001-HON-H252	1.0	.0	.0	
2 1001-HON-H252LK	1.0	.0	.0	
3 1001-HON-H254	1.0	.0	.0	
4 1001-HON-H254LK	1.0	.0	.0	
5 1001-HON-H252	1.0	.0	.0	
6 1001-L	1.0	.0	.0	

Figure 4

Item Packaging Maintenance has been modified with the Ship To and Ship Via fields for the package (Figure 5).

Item on Order	Quantity on Order	In Package	Quantity in Package
1 1001-HON-H252	2.0	<input checked="" type="checkbox"/>	1.0
2 1001-HON-H252LK	1.0	<input type="checkbox"/>	0.0
3 1001-HON-H254	1.0	<input checked="" type="checkbox"/>	1.0
4 1001-HON-H254LK	1.0	<input type="checkbox"/>	0.0
5 1001-L	1.0	<input type="checkbox"/>	0.0

Figure 5

## Extended Solutions

Packages will be restricted to hold only unique Ship To/Ship Via combination. If you attempt to add items to a package where the Ship To Code or Ship Via Code do not match what was specified for the package, you will be prevented from taking that action (Figure 6).

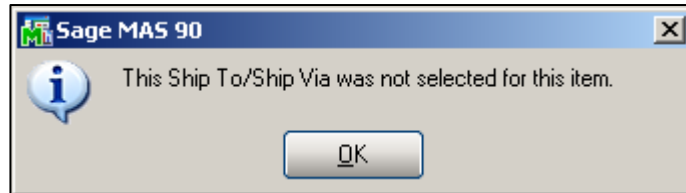


Figure 6

If the same item has multiple lines on a sales order, each with different Ship To/Ship Via combinations, standard MAS90 MAS200 Shipping Entry combines these multiple lines into one line. However, the SO-1067 program will still sort the lines and their quantities as represented on the sales order to the appropriate package and will not allow the quantity in package to exceed the quantity ordered for the Ship To/Ship Via for that line (Figure 7)

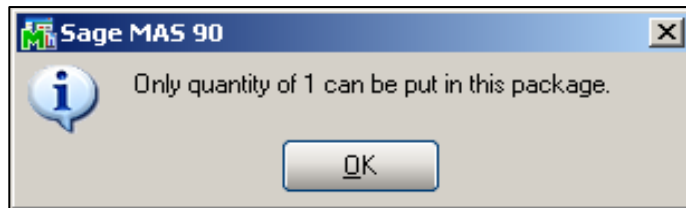


Figure 7

If you create a new Package number in Item Package Maintenance, you will be prompted to select a Ship To/Ship Via for the package. All Ship To/Ship Via combinations on the order will be loaded into the drop box for selection (Figure 8).

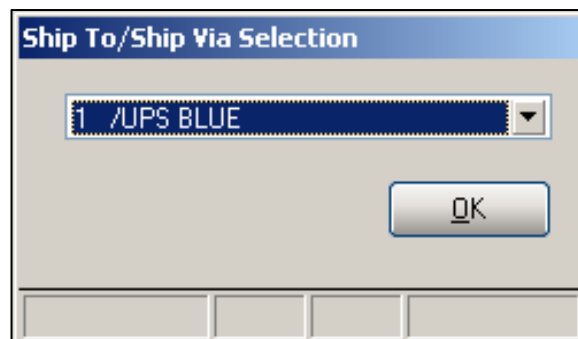


Figure 8

## Extended Solutions

*A/R Invoice History*

The Ship To Code and Ship Via Shipping Code for each line are written to the A/R Invoice History Detail file during the S/O Sales Journal update. These two fields can be added to the A/R Invoice History Inquiry detail panel via Customizer.

**ODBC Dictionary**

The files listed below have been added or changed in the ODBC Dictionaries by this Extended Solution for Crystal Reports purposes.

<i>File:</i>	<i>Fields:</i>
SO_SalesOrderDetail	ShipToCode_001 ShipVia_001
SO_SalesOrderHistoryDetail	ShipToCode_001 ShipVia_001
SO_InvoiceDetail	ShipToCode_001 ShipVia_001
SO_InvoiceTracking	ShipToCode_001 ShipVia_001
SO_InvoiceWrk	ShipToCode_001 ShipVia_001
SO_PackingListWrk	ShipToCode_001 ShipVia_001
SO_PickingSheetWrk	ShipToCode_001 ShipVia_001
SO_SalesOrderWrk	ShipToCode_001 ShipVia_001
AR_InvoiceHistoryDetail	ShipToCode_001 ShipVia_001

Be aware that the ODBC Dictionaries may contain other files and data fields that will be unavailable without their corresponding Extended Solutions installed.

**What's New**

*With the 2-22-07 release:*

- Converted to Business Framework
- Removed the following options from Setup
  - Non-Inventory Items To Follow Items On Picking Sheets
  - Pop Up Ship To Maintenance Header
- In Sales Order and Invoice Data Entry:
  - Ship To Code and Ship Via were added to the secondary grid
  - Ship To Maintenance option was added to the drop down menu
- Ship To Code and Ship Via were added to the secondary grid as read-only fields in Shipping Data Entry
- Ship To/Ship Via for the package now displays in Item Packaging Maintenance

### Upgrades and Compatibility

The installation CD is labeled with the version of the MAS 90 MAS 200 module for which this Extended Solution was prepared. This Extended Solution will check its compatibility with the appropriate MAS 90 MAS 200 modules and will be disabled if an incompatibility is found. If you upgrade your MAS 90 MAS 200 modules, this Extended Solution must be upgraded as well. Your MAS 90 MAS 200 dealer can supply this upgrade.

### Documentation

Only changes made to the standard operation of MAS 90 MAS 200 have been documented in this manual. Operations not documented in this manual are standard procedures of MAS 90 MAS 200 processing. Standard MAS 90 MAS 200 processes, data entry screens, inquiry screens, reports, updates, etc., have not been changed unless addressed in this document.

Parts of this document may refer to the *Specific Purpose Rule*. When referenced, the described feature was developed for a specific client to its specifications and may not conform to generally accepted MAS 90 MAS 200 standards and procedures. These features may or may not benefit you in your application of MAS 90 MAS 200.

### Acknowledgments

© 2005 Sage Software, Inc. All rights reserved. Sage Software, MAS 90 and MAS 200 are registered trademarks or trademarks of Sage Software, Inc. All other trademarks are the property of their respective owners.