
'Positive Pay' Export

BR-1004

Overview

This Extended Solution to the Bank Reconciliation module creates a 'Positive Pay' format export file from B/R Entries in a variety of different formats.



We do not warrant that the financial institution associated with the name of any particular format will accept submission of that file. Please check with your financial institution for their current submission requirements prior to purchase. Because the name of the financial institution may have changed since we were commissioned to add the format, it is recommended that you not restrict your search based on the format name.

Installation

Before installing this Extended Solution, please verify that the version level(s) printed on the CD label are the same as the version level(s) of the MAS 90 MAS 200 module(s) you are using. For further information, please see the Upgrades and Compatibility section below. Check your Shipping Manifest for a complete list of Extended Solutions shipped.

For detailed installation instructions, please refer to the Sage website at:
http://support.sagesoftwareonline.com/mas/Extended_solutions/main.cfm

Installing Your Extended Solutions Under Windows From a CD

If you have the *autorun* function turned on for your PC, the installation program will start up automatically. If not, find the **autorun.exe** file on your CD-ROM drive and double-click it to start the installation program. Follow the on-screen instructions.

From the Sage FTP site

When your Extended Solution is ready to be downloaded, you will receive an email from 'Extendedsolutions.na@sage.com' telling you that it is ready. The email will contain the Customer Name, Cross Reference, a case-sensitive Password, a link via which you can download your Extended Solution, instructions, and a Shipping Manifest. If you have any problems with this order, please email extendedsolutions.na@sage.com and we will assist you during normal business hours.

Extended Solutions Control Center

Installing any Extended Solution will add an Extended Solutions Control Center to the MAS 90 MAS 200 Library Master Utilities menu. When you open the Control Center, the following options will be available:

- Extended Solutions Manuals

Extended Solutions

- Remove Extended Solutions
- Unlock Extended Solutions
- Merge Installation Files
- Extended Solutions Setup options

Custom Office

If you customize your MAS 90 MAS 200, then you must run the Update Utility *every time* you install this Extended Solution.

Setup

Upon completion of software installation, you will need to access Extended Solutions Setup from the Bank Reconciliation Main menu. Select this part number and the Setup screen for this Extended Solution will appear (Figure 1). Check the 'Enable Extended Solution' box to activate this Extended Solution. The manual for this Extended Solution can be viewed by clicking the 'Manual' button next to the 'Enable Extended Solution' check box. It can also be viewed via the Extended Solutions Control Center (see Installation, above).

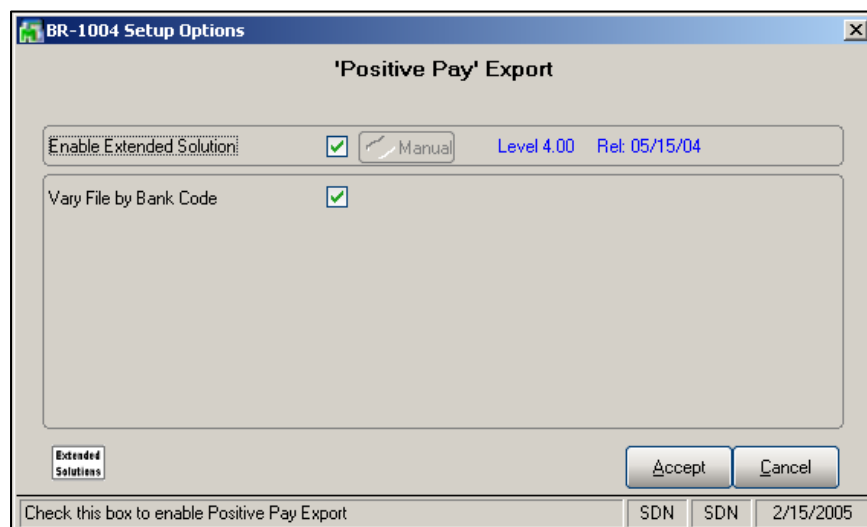


Figure 1

Answer the following prompt:

VARY FILE BY BANK CODE: Check this box when you wish to create Positive Pay Exports for more than one financial institution.

Role Maintenance

The following Task has been added to Bank Reconciliation, Miscellaneous Task:

- Positive Pay Export

The following Task has been added to Bank Reconciliation, Setup Option Task:

Extended Solutions

- Positive Pay Export Setup

You should visit this Setup screen after each upgrade or reinstallation of this Extended Solution.

Operation

Positive Pay Export Setup

A new 'Positive Pay Export Setup' menu option is available. If you checked the 'Vary by Bank Code' option in Setup, you can set up the export options by Bank Code (Figure 2).

Figure 2

The following prompts are available on the Main tab:

DEFAULT EXPORT PATH: Enter the default path for export.

EXPORT FILE FORMAT: Select the file format you wish to use: MercPay, US Bank, Wells Fargo, Citibank, Chase, Bank of America, Key Bank, Bank of America II, HSBC, Wells Fargo II, Wells Fargo III, Union Bank of CA, Citibank II, COMERICA, Bank One, Fleet, WAMU, Chase II, Key Bank II, Missouri State Bank, Wachovia, Mission Bank, Compass, US Bank 2, 5/3 Bank, MICASH, UMB, Regions, RBC, SunTrust, Citizen's Bank, Bank of Nevada, Manufacturers Bank, Bank of America III, Bank of America IV, Wachovia II, Community Trust Bank, M & T Bank, Bank of America V, Colorado Business Bank, Branch Banking &

Extended Solutions

Trust, Bank of America VI, JP Morgan Chase, Mellon Bank and Bank of America VII (please see Appendix for file layouts).



The MICASH and 5/3 bank formats are only available if the 'Vary File by Bank Code' box in Setup is checked.

CHANGE THE CLEARED FLAG TO 'Y' UPON COMPLETION OF EXPORT: If you check this box, Cleared flags will be changed to 'Y.' If you leave it blank, the flags will remain at 'N.'

If you selected the 'US Bank' or 'US Bank 2' format, you will have access to the following option:

DISREGARD SIGN WHEN ACCUMULATING 'TOTAL AMOUNT' FIELD: If you check this box, the 'TOTAL AMOUNT' export field will be the total of the all check amounts as positive numbers.

COMBINE BANK CODES INTO SINGLE FILE: If you check this box, when you run the report for multiple bank codes, the data from each bank code will be combined into one file. If you do not check this box, multiple files will be created.

COMBINED BANK CODE FILE NAME: If you checked the above box, enter the file name you wish to give the combined Bank Code file. This will be used each time a combined export file is created, rather than the current date name convention.

If 'Combine Bank Codes Into Single File' is unchecked, the following two fields will be available.

FILENAME: select one of the following options

- RunDate+BankCode.exp
- RunDate+BankCode+Seq.exp
- ARPxxxx.txt

If you selected 'RunDate+BankCode+Seq.exp,' then a sequence number which begins at 1 and ends at 9 will be added to the export if more than one file is generated with the same date to prevent the file from overwriting each other.

If you selected ARPxxxx.txt, then the following option will be available.

If you are using the Mission Bank format, Compass format, Regions format, Bank of Nevada format, Manufacturers Bank format, or Wells Fargo III format, the extension of the file will be .csv.

ARP SEQUENCE NUMBER: (5 character numeric, defaults to: 00001).

This option is available for all formats when the Payroll module is activated.

Extended Solutions

CHANGE P/R POSTING COMMENTS TO B/R: Check this box to have the Payee Name field populate with the Employee's First Name, a space after the last character in the field and then the Employee's Last Name.

If you selected the M & T Bank format, you will have access to the following option:

GL BANK CODE MASTER UDF FOR BANK ID: Specify the multi line string type UDF which holds the actual Bank Account Number.

If you selected the WAMU format, you will have access to the following option:

INCLUDE ONLY 'ISSUE' TYPE RECORDS: Check this box to have only records with Check Type "A" or "M" included.

The following options appear under the Additional tab (Figure 3).

If you selected the Citibank format, you will have access to the following options:

NEXT BATCH NUMBER: Enter a six-character numeric.

FILE HEADER COMPANY CODE: Enter a fifteen-character Uppercase String.

BATCH HEADER COMPANY-ISS: Enter an eleven-character Uppercase String, which will be appended with '-ISS.'

Due to the file format for the Citibank format, the option to 'Combine Bank Codes' will be disabled and forced as 'checked.' You must enter a Combined Bank Code filename for this export format.

The screenshot shows the 'Positive Pay Export Setup' dialog box with the 'Additional' tab selected. The 'Bank Code' is set to 'A' and the bank name is 'Security Pacific Checking'. The 'Next Batch Number' is '000000'. The 'File Header Company Code' and 'Batch Header Company - ISS' fields are empty. The 'Include Sign On Record' checkbox is unchecked. The 'RID' and 'Bank of Nevada Routing #' fields are empty. The 'Wells Fargo Bank ID', 'Citibank 2 Bank ID', and 'Bank One Bank ID' fields are empty. The 'Wells Fargo III Routing #' field is empty. The 'Mellon Bank Trading Partner' is 'PARTNER ID' and the 'Mellon Bank Account Name' is 'JOHN S. SMITH'. The 'Community Trust Bank Number', 'Community Trust Application No.', 'UMB Bank Number', 'Wachovia Bank Number', 'MICASH Bank Number' (set to '999'), and '5/3 Bank Number' fields are empty. The 'Password' field is empty. The 'Accept', 'Cancel', and 'Print' buttons are visible at the bottom right. The status bar at the bottom shows 'SDN SDN 11/24/2008'.

If you selected the Bank of America III or VI format, you will have access to the following options:

BANK OF AMERICA III (OR VI) HEADER RECORD: Enter the 3 character alpha Header Record.

BANK OF AMERICA III (OR VI) BANK NUMBER: Enter your 3 character numeric Bank Number.

If you selected the Bank of Nevada format, you will have access to the following option:

BANK OF NEVADA ROUTING#: Enter the numeric bank routing number for Bank of Nevada.

If you selected the UMB format, you will have access to the following option:

UMB BANK NUMBER: Enter your 3 character numeric Bank Number.

If you selected the Wachovia or Wachovia II format, you will have access to the following option:

WACHOVIA BANK NUMBER: Enter your 4 character numeric Bank Number.

If you selected the Wells Fargo or Wells Fargo 2 format, you will have access to the following options:

INCLUDE SIGN ON RECORD: Check this box to create and send an additional record called the 'Sign On Record' as the first item in the transmission during the export file creation process.

If you check this box, you will have access to the following prompts:

RID: Enter the 8-character uppercase string type RID.

BID: Enter the 24-character uppercase string type BID.

If you selected the Wells Fargo 2 format, you will have access to the following option:

WELLS FARGO BANK ID: Enter a five-character numeric Bank ID.

If you selected the Citibank 2 format, you will have access to the following option:

CITIBANK 2 BANK ID: Enter a numeric Bank ID.

If you selected the Bank One format, you will have access to the following option:

BANK ONE BANK ID: Enter a six-character numeric Bank ID.

BANK ONE FILE ID: Enter a 25-character uppercase string File ID.

PASSWORD: Enter a nine-character uppercase string password.

If you selected the MICASH format, you will have access to the following option:

MICASH BANK NUMBER: Enter your 3 character numeric Bank Number.

If you selected the 5/3 Bank format, you will have access to the following option:

5/3 BANK NUMBER: Enter your 3 character numeric Bank Number.

If you selected Community Trust Bank, you will have access to the following options:

COMMUNITY TRUST BANK NUMBER: Enter your 4 character numeric Bank Number.

COMMUNITY TRUST APPLICATION NUMBER: Enter your 2 character Application Number.

If you selected Wells Fargo III, you will have access to the following option:

WELLS FARGO III ROUTING #: Enter your 11 character numeric Routing Number.

If you selected Mellon Bank, you will have access to the following options:

MELLON BANK TRADING PARTNER: Enter your 15 character Trading Partner.

MELLON BANK ACCOUNT NAME: Enter your 35 character numeric Account Name.

Positive Pay Export Selection

'Positive Pay' Export is available as a menu item (Figure 4).

Figure 4

When 'Vary By Bank Code' is unchecked, you will be presented with the following options:

BANK CODE LIST: Enter up to ten Bank Codes; designed to be used with the 'MercPAY' format.

RANGE OF BANK CODES: If the 'Bank Code List' field is blank, then you will have access to this to define the beginning and ending Bank Codes you wish to include in the export file, or select 'All.' This is designed to be used with the Wells Fargo, US Bank, Citibank, Chase, Bank of America, Bank of America II, or Key Bank formats.

CHECK NUMBER: Enter the starting and ending Check Number, or select 'All.'

CHECK DATE: Enter the starting and ending Check Date, or select 'All.'

EXPORT PREVIOUSLY EXPORTED RECORDS: Check this box to include those records that currently have their 'Exported' flag set to 'Yes.'

If you have selected 'Citibank' format you will have access to this option:

FILE HEADER CONTROL NUMBER: You can click '#' for Next, or enter a six character numeric value. The six characters in this field will be appended with '000' to create the nine characters needed for the field. The Batch Control Number will then be defined as the same six characters from the selection criteria + '001'. These last three will increment with each additional Batch created.

If you have the selected 'Wells Fargo' format, you will have access to these additional options:

DOLLAR AMOUNT: If you choose 'Zero,' then only checks in the range defined with a check amount of 'zero' will be selected. If you choose 'Greater than Zero,' then all checks in the defined range with a check amount greater than zero will be selected. If you choose 'All,' then all checks in the defined range, regardless of check amount, will be selected.

TRANSACTION CODE: Select from the drop box one of the following: '320 Check Register' or '370 Cancelled Register.' The value here will be used in the 'Transaction Code' field in that file.

If you checked 'Vary by Bank Code' in Setup, you can only select one Bank Code (the Bank Code range is disabled: see Figure 4a) and there must have an entry in Positive pay Export Setup. All other options are the same as described above.

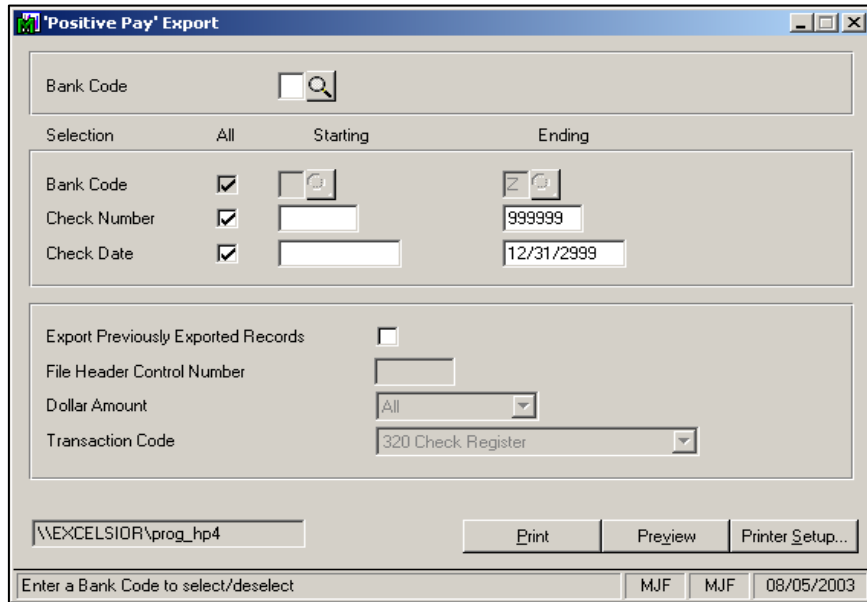
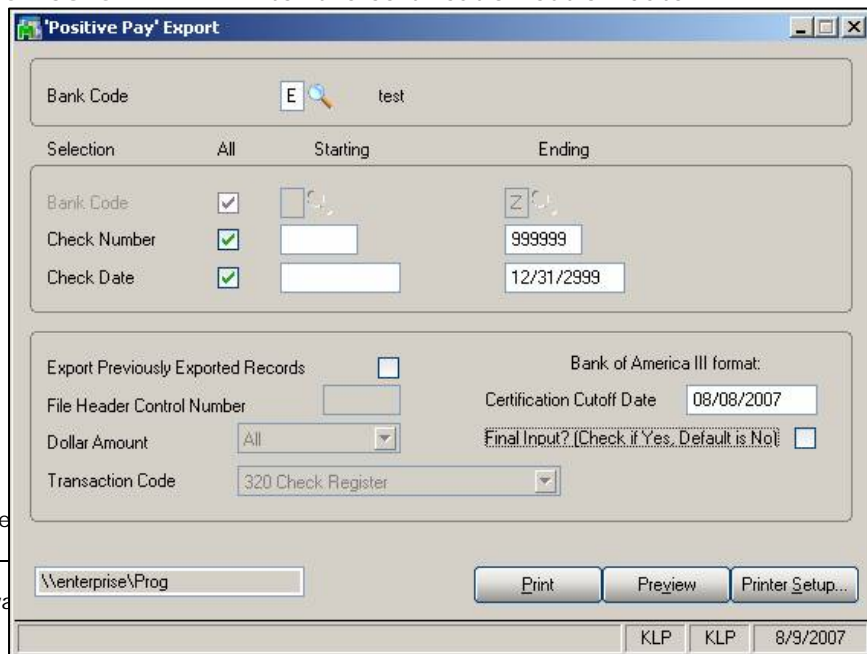


Figure 4a

When Bank of America III or Bank Of America VI format is selected you will be presented with additional options (Figure 4b).

CERTIFICATION CUTOFF DATE: Enter the certification cut off date.

FINAL (CHECK IF DEFAULT IS this box if final input



INPUT? YES, No): check this is the

Figure 4b

Create an export file by either clicking on the 'Print' button to print the list of checks or the 'Preview' button to view the list (Figure 5).

BANK CODE	CHECK NUMBER	CHECK DATE	REFERENCE NUMBER	PAYEE NAME	CHECK AMOUNT
A	001743	03/31/05	550000430	LEWIS, J.	10,300.81
A	001744	03/31/05	550000440	SAMUELS, L.	9,303.50
A	001745	03/31/05	440000490	MAYTON, M.	712.18
A	001746	03/31/05	550000430	LEWIS, J.	10,300.81
A	001747	03/31/05	550000440	SAMUELS, L.	9,303.50
A	001752	03/31/05	550000430	LEWIS, J.	5,905.09
A	001753	03/31/05	550000440	SAMUELS, L.	5,402.86
TOTAL:					51,228.75

CHECKS SELECTED: 7

Figure 5

If you are not using the 'Combined Bank Code Filename' setup option, regardless of the format selected, the file will be named based upon the 'File Name' from setup.

The program will select all check entries which have not cleared and whose 'Exported Flag' is unchecked. Upon creation of the import file, the 'Exported Flag' will be checked, thus preventing the selection of this record again.

If the Setup question 'Change the Cleared Flag to 'Y' Upon Completion of Export' has been checked, records having a Cleared flag of 'N' will be changed to 'Y.'

Check/Deposit/Adjustment Entry

A checkbox has been added to the Check/Deposit/Adjustment Entry screen to allow maintenance of the Exported flag (Figure 6).

	Check No.	Entry No.	Reference	Payee Name	Amount	Cleared	Exported
1	001731	000000	110000106	Costa, J.	225.52	<input checked="" type="checkbox"/>	<input checked="" type="checkbox"/>
2	001733	000000	110000106	Costa, J.	533.98	<input checked="" type="checkbox"/>	<input checked="" type="checkbox"/>
3	001735	000000	120000220	HADLEY, R.	487.05	<input checked="" type="checkbox"/>	<input checked="" type="checkbox"/>
4	001736	000000	120000220	HADLEY, R.	427.05	<input type="checkbox"/>	<input type="checkbox"/>
5	001737	000000	120000220	HADLEY, R.	427.05	<input type="checkbox"/>	<input type="checkbox"/>
6	001737	000001	440000480	BROWN, W.	384.86	<input type="checkbox"/>	<input type="checkbox"/>
7	001738	000000	120000220	HADLEY, R.	454.87	<input type="checkbox"/>	<input type="checkbox"/>
8	001738	000001	440000490	MAYTON, M.	377.94	<input type="checkbox"/>	<input type="checkbox"/>
9	001739	000000			.00	<input checked="" type="checkbox"/>	<input type="checkbox"/>
10	001739	000001	001741		.00	<input checked="" type="checkbox"/>	<input type="checkbox"/>
11	001740	000000	120000220	HADLEY, R.	566.15	<input type="checkbox"/>	<input type="checkbox"/>
12	001741	000000			nn	<input checked="" type="checkbox"/>	<input type="checkbox"/>

Figure 6

5/3 Bank Format

See the Appendix for the file layout.

Bank of America Format

Once defined, a fixed field file consisting of a Header record, multiple Detail records and a Trailer record will be created. See the Appendix for the file layout.

Bank of America II format

A fixed field files with no header or trailer records will be created. See the Appendix for the file layout.

Bank of America III

See the Appendix for the file layout.

Bank of America IV

See the Appendix for the file layout.

Bank of America V

See the Appendix for the file layout.

Extended Solutions

Bank of America VI

See the Appendix for the file layout.

Bank of America VII

See the Appendix for the file layout.

Bank of Nevada

See the Appendix for the file layout.

Bank One Format

During file creation, the first record in the file will be a 64 character string comprised of:

LOGDX + File ID+ 9 zeroes + Password + 16 zeroes

See the Appendix for the file layout.

Branch Banking & Trust

See the Appendix for the file layout.

Chase Format

The file is a fixed ASCII format. See the Appendix for the file layout. All fields are right-justified.

Chase II Format

See the Appendix for the file layout.

Citibank Format

The file is a fixed ASCII format. See the Appendix for the file layout. The 'File Header Control Number' on the export selection screen cannot be blank.

Citibank 2 Format

See the Appendix for the file layout.

Citizen's Bank Format

See the Appendix for the file layout.

Colorado Business Bank

See the Appendix for the file layout.

COMERICA

The program will produce one Totals record for each unique Check Date and will exclude voids and reversals from the 'Detail Total.' See the appendix for the file layout.

Community Trust Bank

See the Appendix for the file layout.

Compass Bank Format

See the Appendix for the file layout.

Fleet Format

See the Appendix for the file layout.

HSBC Format

The HSBC file will contain multiple Detail Records followed by a single Trailer Record. See the Appendix for the file layout.

JP Morgan Chase Format

See the Appendix for the file layout.

Key Bank Format

See the Appendix for the file layout.

Key Bank II Format

See the Appendix for the file layout.

M & T Bank

This bank's Account Number is longer than what standard MAS90/MAS200 supports. This format will match the Bank ID to the first 15 characters of the setup specified UDF. See the Appendix for the file layout.

Manufacturers Bank

See the Appendix for the file layout.

Mellon Bank

See the Appendix for the file layout.

MercPAY Issue File Record Format

The export function may be selected by a list of up to ten Bank Codes, Check Dates, and Check Numbers (see Figure 4). A file in the MercPAY Issue File Record Format will be created for each Bank Code. See the Appendix for the MercPAY Issue File Record Format.

MICASH Bank Format

See the Appendix for the file layout.

Mission Bank Format

When the Mission Bank Format is selected, the positive pay export program will produce a .csv (comma separated value) file. All File Name options in Setup will reflect .csv extensions if Mission Bank is selected. See the Appendix for the file layout.

Missouri State Bank Format

See the Appendix for the file layout.

RBC

See the Appendix for the file layout.

Regions Bank Format

Extended Solutions

When the Regions Bank Format is selected, the positive pay export program will produce a .csv (comma separated value) file. All File Name options in Setup will reflect .csv extensions if Regions Bank is selected. See the Appendix for the file layout.

SunTrust Format

See the Appendix for the file layout.

UMB Format

See the Appendix for the file layout.

Union Bank of CA Format

See the Appendix for the file layout.

US Bank Format

The file is a fixed ASCII format. See the Appendix for the file layout. The export selection screen now prompts for a range of bank codes (Figure 4). If you elected to 'Disregard Sign When Accumulating "Total Amount" Field' in Positive Pay Export Setup, then the 'Total Amount' field in the export file will consider all 'Check Amount' values in the file to be positive. The Positive Pay Export Report will follow suit, but will print a 'V' next to any entry whose true value is negative.

US Bank 2 Format

The file is a fixed ASCII format. See the Appendix for the file layout. If you elected to 'Disregard Sign When Accumulating "Total Amount" Field' in Positive Pay Export Setup, then the 'Total Amount' field in the export file will consider all 'Check Amount' values in the file to be positive. The Positive Pay Export Report will follow suit, but will print a 'V' next to any entry whose true value is negative.

Wachovia Format

See the Appendix for the file layout.

Wachovia II

See the Appendix for the file layout.

WAMU Format

See the Appendix for the file layout.

Wells Fargo Format

The file is a fixed ASCII format. See the Appendix for the file layout. The export selection screen now prompts for a range of bank codes and one transaction code to be included in the file (Figure 4a). If you checked the 'Include Sign On Record' box in Positive Pay Export Setup, during the export file creation process an additional Record called the 'Sign On Record' will be created and sent as the first item in the transmission.

Wells Fargo II

There should only be only one header record for each file. Multiple accounts are permitted if they are grouped by account with a trailer record for each group. There should be only one detail record for each check issued. Multiple accounts are permitted if they are grouped by

Extended Solutions

account with a trailer record for each group. Each detail record must contain an account number, and all records must be in the same format. See the Appendix for the file layout. If you checked the 'Include Sign On Record' box in Positive Pay Export Setup, during the export file creation process an additional Record called the 'Sign On Record' will be created and sent as the first item in the transmission.

Wells Fargo III

See the Appendix for the file layout.

ODBC Dictionary

The files listed below have been added or changed in the ODBC Dictionaries by this Extended Solution for Crystal Reports purposes.

<i>File:</i>	<i>Description</i>	<i>Field:</i>
BR_Transaction	Transaction	Exported_001

Be aware that the ODBC Dictionaries may contain other files and data fields that will be unavailable without their corresponding Extended Solutions installed.

What's New

With the 12-05-08 release

- Added Mellon Bank format and Bank of America VII formats

With the 11-05-08 release

- Added 'Bank of America VI' and 'JP Morgan Chase' formats

With the 07-18-08 release

- Added lightbulb to Operations for MICASH and 5/3 bank formats.

Upgrades and Compatibility

The installation CD is labeled with the version of the MAS 90 MAS 200 module for which this Extended Solution was prepared. This Extended Solution will check its compatibility with the appropriate MAS 90 MAS 200 modules and will be disabled if an incompatibility is found. If you upgrade your MAS 90 MAS 200 modules, this Extended Solution must be upgraded as well. Your MAS 90 MAS 200 dealer can supply this upgrade.

Documentation

Only changes made by Sage Software, Inc. to the standard operation of Sage Software, Inc. MAS 90 MAS 200 have been documented in this manual. Operations not documented in this manual are standard procedures of MAS 90 MAS 200 processing. Standard MAS 90 MAS 200 processes, data entry screens, inquiry screens, reports, updates, etc., have not been changed unless addressed in this document.

Extended Solutions

Parts of this document may refer to the *Specific Purpose Rule*. When referenced, the described feature was developed for a specific client to its specifications and may not conform to generally accepted MAS 90 MAS 200 standards and procedures. These features may or may not benefit you in your application of MAS 90 MAS 200.

Acknowledgments

© 2008 Sage Software, Inc. All rights reserved. Sage Software, MAS 90, and MAS 200 are registered trademarks or trademarks of Sage Software, Inc. All other trademarks are the property of their respective owners.

APPENDIX**5/3 Bank Format**

When selected the export file will generate in the following format:

Detail Record

<i>Position</i>	<i>Description</i>	<i>MAS90/200</i>
01-02	Detail Indicator	'10'
03-05	Bank Number	from Setup, RJZF
06-15	Account Number	Bank ID, RJZF
16-25	Serial/Check Number	Check Number, RJZF
26-33	Issue Date for Check	YYYYMMDD, Check Date
34-44	Amount	2 decimals implied, RJZF
45-59	Payee Name	Left Justified; blank fill
60-60	Void Indicator	'v' for Reversal or Cancel; otherwise blank
61-80	Filler	Blank

Account Total Record (Totals by Bank Code):

<i>Position</i>	<i>Description</i>	<i>Comments</i>
01-02	Account Total Indicator	'20'
03-05	Bank Number	from Setup, RJZF
06-15	Account Number	Bank ID, RJZF
16-25	Number of Checks for this Account	Detail Record Count, RJZF
26-33	File Date	YYYYMMDD, System Date
34-44	Total Amount for this Account	2 decimals implied, RJZF
45-80	Filler	Blank

File Total Record:

<i>Position</i>	<i>Description</i>	<i>Comments</i>
01-02	File Total Indicator	'30'
03-05	Bank Number	from Setup, RJZF
06-15	Filler	'9999999999'
16-25	Number of Checks for this File	Detail Record Count, RJZF
26-33	File Date	YYYYMMDD, System Date
34-44	Total Amount for this File	2 decimals implied, RJZF
45-80	Filler	Blank

Extended Solutions

Bank of America Format**Header Record**

<i>Data Field</i>	<i>Position</i>	<i>MAS 90 MAS 200 Description</i>
Account Number	1-10	First 10 characters of Bank Account Number from Bank Code Maintenance
Filler	11-20	Blank
File Creation Date	21-28	Bank Reconciliation System Date (MMDDYYYY)
Record Indicator	39	'H'
Filler	40-80	Blank

Detail Record

<i>Data Field</i>	<i>Position</i>	<i>MAS 90 MAS 200 Description</i>
Account Number	1-10	First 10 characters from Bank Account Number from Bank Code Maintenance
Serial Number	11-20	Check Number, right justify, zero fill
Issue Date	21-28	Check Date (MMDDYYYY)
Amount	29-38	Check Amount formatted: PIC 9(10)V99
Transaction Code	39	Blank unless transaction types V, R, or X encountered, then 'V'
Additional Data	40-59	Blank
Filler	60-80	Blank

Trailer Record

<i>Data Field</i>	<i>Position</i>	<i>MAS 90 MAS 200 Description</i>
Filler	1-10	Blank
Item Count	11-19	Total Number of records including Header and Trailer, but excluding Detail Records with Type 'V', right justified, zero filled
Filler	20-28	Blank
Amount	29-38	Sum of all Detail Amounts, excluding 'V', formatted PIC9(10)V99
Record Indicator	39	'T'
Filler	40-80	Blank

Bank of America II Format

Any position (1-80) not used will be recognized with a BLANK

<i>Field No</i>	<i>Field Description</i>	<i>Position</i>	<i>Length</i>	<i>Class</i>	<i>Constant Remarks</i>
1	Account Number	1	12	N	Right justified, zero filled
2	Void Indicator	13	1	N	Literal '2'
3	Blank	14	2	N/A	Literal blank
4	Check Number	16	10	N	Right justified, zero filled
5	Amount	26	12	N	9 (10) v99 Right justified, zero filled Assume decimal
6	Issue date	38	6	N	MMDDYYYY
7	Additional Data	44	15	A/N	Blank

Extended Solutions

Bank of America III Format

When selected a fixed field length export file is created in the following file layout.

Header Record

<i>Field</i>	<i>Start Position</i>	<i>Length</i>	<i>MAS90/200</i>
Header Record Label	1	3	From Setup
Bank Number	4	3	From Setup
Bank Account Number	7	12	Bank ID Number (RJZF)
Processing Date	19	8	System Date - YYYYMMDD
Blank	27	1	<Blank>
Certification Cutoff Date	28	8	Run time prompt - YYYYMMDD
Final Input Indicator	36	1	Run time prompt – Y/N
Blanks	37	44	<Blanks>

Detail Record

Check Number	1	10	Check Number (RJZF)
Check Amount	11	10	Check Amount (RJZF), \$\$\$\$\$\$cc
Bank Account Number	21	10	Bank ID Number (RJZF)
Actual Date of Issue	31	6	Check Date - MMDDYY
Issue Record	37	1	<Blank> if Issue Record “-“ if Check Type is R
Payee Information	38	43	Payee Name

Trailer Record

Constant	1	4	Constant "1EOF"
Blank	5	1	<Blank>
Total Number of Detail Records	6	5	Detail Record Count (RJZF)
Blanks	11	20	<Blanks>
Hash Total	31	10	Sum of all Check Number fields in the detail records (RJZF)
Summation of dollar amounts	41	10	Sum of absolute value of the Check Amount field in detail records – \$\$\$\$\$\$\$cc (RJZF)
Blanks	51	30	<Blanks>

Extended Solutions

Bank of America IV Format

When selected a fixed field length export file is created in the following file layout.

Detail Record

<i>Field</i>	<i>Description</i>	<i>Length</i>	<i>Class</i>	<i>Start Position</i>	<i>MAS90/200</i>
1	Account Number	10	N	1	Bank ID Number
2	Void Indicator	1	A/N	11	<Blank> if issued, Literal "2" if Check Type = 'R'
3	Filler	2		12	<Blanks>
4	Serial Number	10	N	14	Check No.
5	Amount	12	N	24	Amount, RJZF, decimal assumed
6	Issue Date	8	N	36	Check Date, YYYYMMDD
7	Additional Data	36	A/N	44	<Blanks>

Trailer Record

<i>Field</i>	<i>Description</i>	<i>Length</i>	<i>Class</i>	<i>Start Position</i>	<i>MAS90/200</i>
1	Account Number	10	N	1	Bank ID Number
2	Total Record Indicator	1	N	11	Literal "T"
3	Filler	2	N	12	<Blanks>
4	Item Count Total	10	N	14	Total quantity of Detail Records, RJZF
5	Dollar Amount Total	12	N	24	Sum of Detail Record Amount fields, RJZF, decimal assumed
6	Filler	21	N	36	Zero Filled

Note: RJZF = Right Justified, Zero Filled

Bank of America V Format

When selected, a fixed field length export file is created in the following file layout. The detail record size is 80 characters and the trailer record size is 33 characters.

Detail Record

<i>Field</i>	<i>Description</i>	<i>Length</i>	<i>Class</i>	<i>Start Position</i>	<i>MAS90/200 data file/field</i>
1	Account Number	10	N	1	Bank ID Number
2	Void Indicator	1	A/N	11	"2" if Check Type = 'R', Else <blank>
3	Serial Number	10	N	12	Check No.
4	Amount	12	N	22	Amount, RJZF, decimal assumed
5	Issue Date	8	N	34	Check Date, YYYYMMDD
6	Additional Data	38	A/N	42	Payee Name

Extended Solutions

Trailer Record

<i>Field</i>	<i>Description</i>	<i>Length</i>	<i>Class</i>	<i>Start Position</i>	<i>MAS90/200 data file/field</i>
1	Account Number	10	N	1	Bank ID Number
2	Total Record Indicator	1	N	11	Literal "T"
3	Item Count Total	10	N	12	Total quantity of Detail Records, RJZF, Void records are not Included in the total
4	Dollar Amount Total	12	N	22	Sum of Detail Record Amount fields, RJZF, decimal assumed, Void records are not included In the total

Note: RJZF = Right Justified, Zero Filled

Bank of America VI Format

When selected, a fixed field length export file is created in the following file layout.

Header Record

<i>Field</i>	<i>Start Position</i>	<i>Length</i>	<i>MAS90/200</i>
Header Record Label	1	3	From Setup
Bank Number	4	3	From Setup
Bank Account Number	7	12	Bank ID Number (RJZF)
Processing Date	19	8	System Date - YYYYMMDD
Blank	27	1	<Blank>
Certification Cutoff Date	28	8	Run time prompt - YYYYMMDD
Final Input Indicator	36	1	Run time prompt - Y/N
Blanks	37	44	<Blanks>

Detail Record

<i>Field</i>	<i>Start Position</i>	<i>Length</i>	<i>MAS90/200</i>
Check Number	1	10	Check Number (RJZF)
Check Amount	11	10	Check Amount (RJZF) \$\$\$\$\$\$\$cc
Bank Number	21	3	From Setup
Bank Account Number	24	12	Bank Code Bank ID
Actual Date of Issue	36	6	Check Date - MMDDYY
Record Type	42	1	<Blank> if Issue Record "-" if Check Type is R
Control Number	43	6	"000000" (6 zeroes)
Numeric Description	49	11	"00000000000" (11 zeroes)
Payee Information	60	19	Payee Name
Blank	79	2	<Blank>

Extended Solutions

Trailer Record

<i>Field</i>	<i>Start Position</i>	<i>Length</i>	<i>MAS90/200</i>
Identifier	1	4	"1EOF"
Blank	5	1	<Blank>
Total Detail Records	6	5	Detail Record Count (RJZF)
Blanks	11	20	<Blanks>
Hash Total	31	10	Sum of all Check Number fields In the detail records (RJZF)
Sum of dollar amounts	41	10	Sum of absolute value of the Check Amount field in detail records, \$\$\$\$\$\$cc (RJZF)
Blanks	51	30	<Blanks>

Bank of America VII Format

When selected, a fixed field export file will be generated in the following layout.

Header Record (Optional)

<i>Field</i>	<i>Start Position</i>	<i>Length</i>	<i>MAS90/200 File/Field</i>
Account number	1	12	Bank Code Maintenance: Bank Account Number (1,12), Numeric, RJZF
Header Record Indicator	13	1	Literal "H"
Date	38	8	System Date, MMDDYYYY

Detail Record

<i>Field</i>	<i>Start Position</i>	<i>Length</i>	<i>MAS90/200 File/Field</i>
Account Number	01	12	Bank Code Maintenance: Bank Account Number (1,12), RJZF
Record Type Code	13	01	B/R Transaction: 'V' when Check Type equals 'R'; else O, Alpha
Serial Number	14	10	B/R Transaction: Check No, RJZF
Amount	24	12	B/R Transaction: Amount,
Date	36	8	B/R Transaction: Check Date, MMDDYYYY
Filler	44	1	<BLANK>
Additional Data	45	45	B/R Transaction: Payee Name, Alpha/Numeric
Filler	90	21	<BLANK>
Record Length:		110	
Block Size:		27940	

Extended Solutions

Trailer Record (Optional)

<i>Field</i>	<i>Start Position</i>	<i>Length</i>	<i>MAS90/200 File/Field</i>
Account Number	01	12	Bank Code Maintenance: Bank Account Number (1,12), RJZF
Total Record Indicator	13	1	Literal "T"
Item Count Total	14	10	Number of Detail records, Numeric, RJZF
Dollar Amount Total	24	12	Sum of Detail records <i>Amount</i> field, Numeric, 9 (10) v99, RJZF, Assume Decimal
Filler	36	75	<BLANK>

Note: RJZF = Right Justified Zero Filled

Bank of Nevada Format

When selected, a comma delimited (.csv) file (with no quotes) will be created with the following file layout.

<i>Field No</i>	<i>Description</i>	<i>MAS90/200</i>
1	Routing/Transit Number	Defined in Setup
2	Account Number	Bank Code's Bank ID
3	Transaction Code	'I' = Issue, 'V' = record type R
4	Check Number	Check Number
5	Transaction Date	Check Date, MM/DD/YY
6	Check Amount	Check Amount, \$\$\$\$\$\$.cc
7	Payee	Payee Name (no commas)
8	Memo	<Blank>

Extended Solutions

**Bank One Format
Header Record**

<i>Position</i>	<i>Length</i>	<i>Description</i>
1-5	5	"LOGDX"
6-25	25	File ID From Bank Code setup, left justified
31-39	9	All zeros
40-49	9	Password From Bank Code setup, left justified
49-64	16	All zeros

Detail Record

<i>Position</i>	<i>Data Element</i>	<i>Field Type</i>	<i>MAS 200</i>	<i>Comments</i>
1	Record Type	Alpha	I or V	I = issue, V = reversal
2	Filler	Alpha		
3 - 22	Account Number	Numeric	Bank ID	RJZF
	Filler	Alpha	<blank>	
24 - 41	Check Number	Numeric	Check Number	RJZF
	Filler	Alpha	<blank>	
42	Amount	Numeric	Check Amount	The amount field should not contain signed data or decimal points. This field has been maximized to 18 digits for future growth. The current check processing system supports amount up to 10 digits in length. The 8 digits should contain zeros.
43 - 60				
61	Filler	Alpha	<blank>	
62 - 69	Issue Date	Date	Check Date	YYYYMMDD
70-144	Additional Data	Alpha	<blank>	
145-150	Bank Number	Numeric	Setup specified	If left blank in Setup will be blank here

Branch Banking & Trust (BB&T)

When selected, a comma delimited file with a .txt extension will be created. Only Issued records will be included.

Data Element	Length	Type	MAS90/200 data field
Account Number	13	Numeric	Bank ID Number
Check Number	10	Numeric	Check No.
Check Amount	14	Numeric, includes decimal	Amount
Issue Date	06	MMDDYY	Check Date

Extended Solutions

Chase Format**Header Record**

<i>Position</i>	<i>Description</i>	<i>MAS 90 MAS 200</i>
1-3	HDR	Hardcode
4-13	Account Number	Bank Account Number
14-52	Filler	Blanks

Detail Record

<i>Position</i>	<i>Description</i>	<i>MAS 90 MAS 200</i>
1-10	Account Number	Bank Account Number
11-20	Check Number	Check Number
21-30	Amount	Dollar Amount of check. Must be 10 digits (\$\$\$\$\$\$cc), right justified, zero-filled
31-36	Issue Date	Check Date
37	Transaction Code	Blank or 'V' for transaction types 'V', 'R', or 'X'
38-52	Customer Usage	Blank

Trailer Record

<i>Position</i>	<i>Description</i>	<i>MAS 90 MAS 200</i>
1-3	EOF	Hardcode
4-15	Total Issue Amount	Total dollar amount for the non Void/Cancel Detail Records. Must be 10 digits, (\$\$\$\$\$\$cc), right justified, zero filled
16-23	Total Issue Count	Total number of Detail Records.
24-52	Filler	Blank

Chase II Format

Record if fixed field with a length of 80 characters.

Detail Record

<i>Position</i>	<i>Field</i>	<i>Comments</i>
2-12	Account Number	RJZF
16-25	Check Number	RJZF
26-37	Dollar Amount	RJZF, no decimal
38-43	Issue Date	MMDDYY
44-45	Void Indicator	'26' if a Cancel or Reversal record

Totals Record

<i>Position</i>	<i>Field</i>	<i>Comments</i>
1	'T'	
26-37	Total Dollar Amount of non-void detail	RJZF, no decimal

Extended Solutions

Trailer Record

<i>Position</i>	<i>Field Name</i>	<i>Comments</i>
1-3	'***'	
4-6	'EOF'	
7-9	'***'	
10	Blank	
11-20	Record Count, Number of Detail Records + 1 for the Total record	RJZF
21-80	Blank	

Citibank Format**File Header**

<i>Field #</i>	<i>Start</i>	<i>Length</i>	<i>Contents</i>	<i>Description</i>
1	1	03	'100'	Record indicator
2	4	15	'COMPANY'	from Setup
3	19	15	'CITIBANKDEL-EDI'	Hardcode
4	34	09	File Header Control #	from Export Selection + '001'
5	43	08	File Creation Date	System Date YYYYMMDD
6	51	200	spaces	

Batch Header Record

<i>Field #</i>	<i>Start</i>	<i>Length</i>	<i>Contents</i>	<i>Description</i>
1	1	03	'200'	Record indicator
2	4	09	Batch Control #	from Export Selection + '002'- '999' (incremented for each Batch Header record.
3	13	15	'COMPANY-ISS'	from Setup
4	28	15	'ISSUANCE-CHK'	Hardcode
5	43	08	Batch Creation Date	System Date YYMMDD
6	51	04	Batch Creation Time	System Time HHMM
7	55	16	Company Name	Company Name in Comp. Code Maint.
8	71	10	Company ID	'1' + Tax ID Number minus dashes
9	81	170	spaces	

Extended Solutions

Detail Record

<i>Field #</i>	<i>Start</i>	<i>Length</i>	<i>Contents</i>	<i>Description</i>
1	1	03	'300'	Record indicator
2	4	05	spaces	
3	9	05	spaces	
4	14	02	Payment Type	'05' – Check Issuance
5	16	03	'CHK'	Hardcode
6	19	03	spaces	
7	22	10	spaces	
8	32	20	spaces	
9	52	13	Check Amount	9(11)V99 (implied decimal)
10	65	08	Check Date	YYYYMMDD
11	73	10	Check Number	right justified, zero filled
12	83	09	'031100209'	Hardcode
13	92	17	Account Number	Bank Account Number Left justified, spaces to the right
14	109	15	Vendor Name	Left justified, spaces to the right
15	144	107	spaces	

Batch Trailer Record

<i>Field #</i>	<i>Start</i>	<i>Length</i>	<i>Contents</i>	<i>Description</i>
1	01	03	'400'	Record Indicator
2	04	09	Batch Header Control Number	see batch header
3	13	09	Total Transactions	Number of transactions in Detail record
4	22	13	Total Amount	9(11)V99, Sum of Check Amount in Detail record
5	35	09	Number of Records in Batch	Batch Header thru Batch Trailer
6	44	207	spaces	

File Trailer Record

<i>Field #</i>	<i>Start</i>	<i>Length</i>	<i>Contents</i>	<i>Description</i>
1	01	03	'500'	Record indicator
2	04	09	File Header Control Number	see File Header
3	13	09	Number of Records in File	File Header thru File Trailer
4	22	15	Total Amount	9(13)V99, Sum of all Batch Check Amounts
5	37	09	Number of Batches in File	
6	46	09	Number of Payments in File	Includes all payment types, i.e., both 05 and 06
7	55	196	spaces	

Notes:

- 1) Record Length = 250 bytes.
- 2) Hex '00', Hex 'FF', Hex '15' or '*' must not appear in any data element.
- 3) Alphanumeric fields are left justified and spaces filled to the right.
- 4) Numeric fields are right justified and zero filled to the left.

Extended Solutions

5) Null files will consist of a File Header Record and a File Trailer Record only.

Citibank 2 Format

Header Record	<i>Position</i>	<i>Length</i>	<i>Comments</i>
Record Type	1	1	Use "H" for header record
Company Name	2-31	30	Company Description, Left Justified - blank filled
Date of File	32-39	8	YYYYMMDD format
Not Used	40-80	41	Blanks

Check Issue Record	<i>Position</i>	<i>Length</i>	<i>Comments</i>
Record Type	1	1	Use "D" for Detail record
Bank Number	2-4	3	Bank Id from Setup
Account Number	5-14	10	Bank ID, Right Justified - Zero Filled
Not Used	15-21	7	Blanks
Void Check Indicator	22	1	Use "V" for Reversals
Check Number	23-32	10	Check Number, Right Justified – Zero Filled
Check Amount	33-42	10	Implied Decimal, Two positions from the right, right justified, zero-filled
Issue Date of Check	43-50	8	YYYYMMDD Format
Additional Data	51-80	30	Blanks

Trailer Record	<i>Position</i>	<i>Length</i>	<i>Comments</i>
Record Type	1	1	Use "T" for Totals Record
Bank Number	2-4	3	Bank Id from Setup
Account Number	5-14	10	Right Justified - Zero Filled
Not Used	15-22	8	Blanks
Check Issued Record Count*	23-32	10	
Total Dollar Amount*	33-42	10	Implied Decimal, Two Positions Right Justified - Zero Filled
Not Used	43-80	38	Blanks

**The Check Issued Record Count and Total Dollar Amount should only include the totals for issue records. Voided check records should not be included in the record count or the dollar amount totals.*

Extended Solutions

Citizen's Bank Format

When selected, a fixed field file will be created with the following file layout.

<i>Description</i>	<i>Start Position</i>	<i>Length</i>	<i>MAS90/200</i>
Account Number	1	10	Bank Code's Bank ID
Serial Number	11	10	Check Number, RJZF
Amount	21	10	Check Amount, RJZF, decimal implied, \$\$\$\$\$\$cc
Issue Date	31	6	Check Date, MMDDYY
Record Type	37	1	'V' for Check Types V, X, R; else <Blank>
Additional Data	38	15	Payee Name, First 15 characters
Payee Name	53	60	Payee Name, Left Justified
Reserved for future	113	68	Unused

Record Length = 180

RJZF = Right Justified, Zero-Filled

Colorado Business Bank

When selected, a comma delimited (.csv) file will be created with the following file layout.

Description	Max Length	Type	MAS90/200 file/field
Account Number	16	A/N	Bank ID Number
Serial Number	10	A/N	Check No.
Trans. Amount	17	N	Check Amount, no decimal
Issue Date	6	MMDDYY	Check Date from A or M record
Void Date	6	MMDDYY	Check Date from CheckType 'R' record; else <Blank>
Payee	20	A/N	Payee Name, commas stripped
Payment Indicator	1	A/N	'V' if CheckType='R'; else 'O'

**COMERICA Format
Detail Record**

<i>Field Name</i>	<i>Position</i>	<i>Data Type</i>	<i>Data Requirements</i>
Record Type	01-01		space = Issue 'V' = Reversal
Account Number	02-11	Numeric	Bank ID
Space	12-12		
Issue Date	13-18	Numeric	MMDDYY
Space	19-19		
Check Number	20-29	Numeric	Right Justified, Zero Filled
Space	30-30		
Check Amount	31-40	Numeric	Right Justified, Zero Filled/Implied 2 decimal
Additional Information	41-80		Blank

Extended Solutions

Total Record

<i>Field Name</i>	<i>Position</i>	<i>Data Type</i>	<i>Data Requirements</i>
Record Type	01-01		'T'
Account Number	02-11	Numeric	Bank ID
Space	12-12		
Issue Date	13-18	Numeric	MMDDYY
Space	19-19		
Detail Record Count	20-29	Numeric	Right Justified, Zero Filled
Space	30-30		
Detail Total	31-40	Numeric	Right Justified, Zero Filled/Implied 2 decimal
Spaces	41-80		

Community Trust Bank

When selected a fixed field length export file is created in the following file layout.
Record size = 84.

<i>Field</i>	<i>Start</i>	<i>Length</i>	<i>MAS90/200</i>
Bank Number	01	04	From Setup
Application Number	05	02	From Setup
Account Number	07	16	Bank ID Number, RJZF
Issue Type	23	02	Literal '60' for Checks
Check Number	25	10	Check Number, RJZF
Issue Amount	35	11	Check Amount, RJZF, \$\$\$\$\$\$\$\$cc
Item Description	46	30	Check Payee Name
Date	76	07	Check Date – formatted as YYYYDDD where DDD=the day of the year (1-365)
Issue Status	83	02	'10' if Issue or '11' if Reversal

Compass Bank format

This format will produce a comma delimited .CSV file with the following record layout

<i>Field</i>	<i>MAS90/200</i>
Account Number	RJZF
Serial Number	Check Number
Amount	Decimal implied
Issue Date	MMDDYYYY
Issue/Void Indicator	I = Issue, V= Reversal or Cancel
Payee Name	30 characters

Extended Solutions

Fleet Format

This format has a block size of 27940.

<i>Field</i>	<i>Position</i>	<i>MAS 200</i>
Serial Number	01-10	Check Number (RJZF)
Amount	11-21	Check Amount (no decimal)
Issue Date	22-27	Check Date (YYMMDD)
Filler	28-33	<blanks>
Account Number	34-43	Bank Code's Bank ID (RJZF)
Record Type Code	44-44	'V' for Reversal, 'O' for all other
Filler	45-110	<blanks>

HSBC Format

The HSBC file will contain multiple Detail Records followed by a single Trailer Record

<i>Field Name</i>	<i>Positions</i>	<i>MAS 90 MAS 200</i>
Account Number	1-13	Bank Account Number (right justified)
Serial Number	14-23	Check Number (right justified)
Check Amount	24-33	Check Amount (decimal implied)
Issue Date	34-41	MMDDYYYY
Additional Data	42-54	blank
Void Indicator	55	'V' if Reversal or Cancel
Blank	56-80	blank

followed by a single Trailer Record

<i>Field Name</i>	<i>Positions</i>	<i>MAS 90 MAS 200</i>
Trailer Indicator	1	'T'
Account Number	2-14	Account Number
Blank	15-19	Blank
Total Items	20-29	Total Number of Detail Records
Blank	30-34	Blank
Total Dollar Amount	35-46	Sum of non-Void Detail Records
Blank	47-80	Blank

Extended Solutions

JP Morgan Chase

This format creates a comma-delimited export file in the following file layout.

<i>Field</i>	<i>Description</i>	<i>Max Length</i>	<i>Field Details</i>	<i>MAS90/200 Data</i>
1	Transaction Indicator	1		'V' if BR_Transaction: CheckType equals 'R', else 'O'
2	Account Number	17		From Bank Code Maintenance
3	Check Number	10		BR Transaction: CheckNo
4	Check Date	6		MMDDYY BR Transaction: Document Date
5	Check Amount	11	Decimal:explicit	BR Transaction: Check Amt
6	Additional Data	30		<BLANK>
7	Payee Line 1	40		BR Transaction: CheckPayeeName
8	Payee Line 2	40		<BLANK>

Key Bank Format

<i>Field No</i>	<i>Field Description</i>	<i>Position</i>	<i>Length</i>	<i>Value</i>
1	Region Code	1-2	2	'00' Hardcoded
2	Account Number	3-17	15	Numeric, Zero-Filled, Right Justified
3	Check Number	18-27	10	Numeric, Zero-Filled, Right Justified
4	Date	28-35	8	CCYYMMDD
5	Amount	36-45	10	Numeric, Zero-Filled, Right Justified, No decimal point
6	Void Character	46	1	Blank

Key Bank II Format

<i>Position</i>	<i>Fields</i>	<i>MAS90/200</i>	<i>Comments</i>
01-02	Region Code		<blank>
03-17	Account Number	Bank ID	Numeric, RJZF
18-27	Serial Number	Check Number	Numeric, RJZF
28-35	Date	Check Date	CCYYMMDD
36-45	Amount	Check Amount	Numeric, RJZF, NO Decimal Point
46	Void Character	If Transaction Type R or X	<blank>
47-61	Additional Data		<blank>
62-136	Payee Line 1	Vendor Name	Left Justified - as it appears on check
137-211	Payee Line 2		<blank>
212-220	Filler		<blank>

Extended Solutions

M & T Bank Format

Record size = 147. Block Size = 27930. All numeric fields must be right justified and zero filled. The Total Record's Total Amount uses absolute values, meaning the negative sign in any detail record is ignored.

Detail Record

<i>Field Name</i>	<i>Start Position</i>	<i>Field Size</i>	<i>Type</i>	<i>MAS90/200</i>
Account Number	01	15	String	GL Bank Code Masterfile UDF from setup
Check Number	16	10	Numeric	Check Number
Dollar Amount	26	12	Numeric	Check Amount, \$\$\$\$\$\$\$\$cc, decimal implied
Date	38	8	Numeric	Check Date, YYYYMMDD
Record Indicator	46	1	Alph/Num	<Blank> if Issue, else "V" if Check Type = "R"
Blank Field	47	1		<blank>
Payee Name	48	100	Alpha/Num	Check Payee Name, Left justified/blank filled

Total Record

<i>Field Name</i>	<i>Start Position</i>	<i>Field Size</i>	<i>Content</i>	<i>MAS90/200 data file/field</i>
Total Indicator	1	1	Alpha	Literal "T"
Total Record Count	12	9	Numeric	Detail Record Count
Total Record Amount	21	12	Numeric	Sum of detail records, dollar amount field, \$\$\$\$\$\$\$\$cc, decimal implied

Manufacturers Bank Format

When selected, a comma delimited (.csv) file (with no quotes) will be created with the following file layout.

<i>Field</i>	<i>Type</i>	<i>MAS90/200</i>
Tran Date	MMDDYYYY	Check Date
Check Number	Numeric	Check Number, no leading zeroes
Account Number	Numeric	Bank ID from Bank Code Maintenance, first 10 characters, leading zeroes included
Payee Name	String	Vendor Name (no commas)
Amount	Numeric	Check Amount, decimal implied
Tran Code	String	"V" for transaction types V, R, or X, else "I"

Extended Solutions

MercPAY Issue File Record Format

<i>Field #</i>	<i>Field Name</i>	<i>Characters</i>	<i>Beginning Position</i>	<i>Comments</i>
1	Record Type	1	1	'1' - Header Record '5' - Detail Record '9' - Trailer Record
2	Company Name	30	2	Left Justified

Detail Record

<i>Field #</i>	<i>Field Name</i>	<i>Characters</i>	<i>Beginning Position</i>	<i>Comments</i>
2	Check Number	8	2	Left Justified If the transaction type is 'X,' the xref check no. will be used
4	Dollar Amount	12	17	9(10)V99 (Implied Decimal)
6	Issue Date	8	32	YYYYMMDD (MAS90 Check Date)
8	Account Number	10	43	Bank Code File
10	Void Code	1	56	For transaction types 'R', this field will be a 'V'

Trailer Record

<i>Field #</i>	<i>Field Name</i>	<i>Characters</i>	<i>Beginning Position</i>	<i>Comments</i>
2	Record Count	9	2	Total Records
4	Dollar Total	15	14	9(13)V99 (Implied Decimal)

Mellon Bank Format**Header Record**

<i>Description</i>	<i>Start Position</i>	<i>Length</i>	<i>Type</i>	<i>MAS90 file/fields and Comments</i>
Record ID	1	2	N	Constant '01'
Trading Partner ID	3	15	AN	Positive Pay Export File setup: Trading Partner ID
Checking Account Number	18	10	N	Bank Code Maintenance: Bank Account Number, RJZF
Name of Account Holder	28	35	AN	Positive Pay Export File setup: Name of Account Holder, 35 character, Uppercase String
Company Name	63	10	AN	Company Maintenance: Company Name. First 10 characters only.

Detail Record

<i>Description</i>	<i>Start Position</i>	<i>Length</i>	<i>Type</i>	<i>MAS90 file/fields and Comments</i>
Record ID	1	2	N	Constant '02'

Extended Solutions

<i>Description</i>	<i>Start Position</i>	<i>Length</i>	<i>Type</i>	<i>MAS90 file/fields and Comments</i>
Action Code	3	1	AN	BR Transaction: Check Type, 'C' if Check Type = 'R', else '1'
Issue Date	4	10	Date	BR Transaction: Check Date, MM/DD/CCYY
Check Amount	14	15	N	BR Transaction: Check Amount, RJBF. No sign (+/-) #####.##
Check Number	29	10	N	BR Transaction: Check No, RJZF.
Payee Name	39	35	AN	BR Transaction: Payee Name, Only for issued checks
Payee Address Line 1	74	60	AN	AP Vendor: Payee Address Line 1

Trailer Record

<i>Description</i>	<i>Start Position</i>	<i>Length</i>	<i>Type</i>	<i>MAS90 file/fields and Comments</i>
Record ID	1	2	N	Constant '03'
Number of Detail Records	3	4	N	Total number of detail records in the file, RJBF

RJZF = Right Justified, Zero Filled
 RJBF = Right Justified, Blank Filled

MICASH Format

The export file will generate in the following format:

<i>Field No</i>	<i>Pos</i>	<i>Field Description</i>	<i>MAS90/200</i>
1	01-01	Constant Value	'C'
2	02-04	Bank Number	from Setup, RJZF
3	05-06	Filler	Zero Filled
4	07-16	Account Number	Bank ID, RJZF
5	17-17	Filler	Blank/Spaces
6	18-18	Transaction Type	'V' = Reversal/Cancel; 'R' = Issue
7	19-19	Action Indicator	'A'
8	20-20	Filler	Blank/Spaces
9	21-30	Check Number	RJZF
10	31-40	Check Amount	2 decimals implied, RJZF
11	41-46	Issue Date	Check Date, MMDDYY
12	47-66	User Information	Payee Name; Left Justified Blank Fill
13	67-80	Filler	Blank/Spaces

Mission Bank Format

This format will produce a comma delimited .CSV file with the following record layout

<i>Data Element</i>	<i>MAS90/200</i>
Check number	Check Number

Extended Solutions

Check date MMDDCCYY
Transaction type 'Issue'
Payee name strip all non alphanumeric characters
Amount includes decimal

Missouri State Bank Format

<i>Position</i>	<i>Field</i>	<i>MAS90/200</i>
01-11	Check Number	RJZF
12-20	Dollar Amount	RJZF, will not contain decimals or comas.
21-28	Issue Date	MMDDYYYY
29	Issue/Void Indicator	Blank for Issues / "V" = Reversal
30-45	Payee name	Left justified, blank fill

Extended Solutions

RBC

When selected the export file will generate in the following format:

<i>Description</i>	<i>Start Position</i>	<i>Length</i>	<i>MAS90/200</i>
Account Number	1	10	Bank Code's Bank ID
Serial Number	11	10	Check Number (RJZF)
Amount	21	10	Check Amount (RJZF) Numeric field, decimal implied
Issue Date	31	6	MMDDYY
Blank	37	15	blank
Void Indicator	52	1	'V' for X or R Check Types
Blank	53	28	blank

Regions Bank Format

This format will produce a comma delimited .CSV file with the following record layout

<i>Field</i>	<i>Comment</i>
Issue/Void	Either 'I' or 'V' (for R or X)
Account Number	Bank Code's Bank ID
Check Number	Check Number
Dollar Amount	Check Amount (no decimal)
Issue Date	MMDDYYYY
Payee	Payee Name

SunTrust Format

When selected the fixed length export file format will be:

<i>Position</i>	<i>Field</i>	<i>Type</i>	<i>MAS90/200</i>
01-13	Account Number	N	Bank Code's Bank ID, RJZF
14-23	Serial Number	N	Check Number, RJZF
24-33	Check Amount	N	Check Amount, RJZF, decimal implied
34-39	Issue Date	D	Check Date, MMDDYY
40-54	Additional Data	S	<blank>
55	Void Indicator	S	<blank> unless transaction type = X or R, then 'V'
56-95	Payee Name	S	Payee Name
96-160	Payee Name 2/Filler	S	<blank>

Extended Solutions

UMB Format*Detail Record*

<i>Position</i>	<i>Description</i>	<i>Length</i>	<i>MAS90/200</i>
1	Transaction Code	01	'D' for Issue / or 'V' for Transaction Types: 'V', 'R' or 'X'
2	Bank Number	03	Setup
5	Account Number	10	Bank Code, Bank ID
15	Check Number	10	Check Number
25	Check Date	06	YYMMDD
31	Check Amount	10	\$\$\$\$\$\$CC, decimal implied
41	Additional Data	15	Payee Name, left justified, blank fill
56	Filler	25	<blank spaces>

Union Bank of CA Format

This format contains one **Detail Record**:

<i>Field</i>	<i>Position</i>	<i>Length</i>	<i>Notes</i>
Account Number	01	10	first 10 characters of the MAS90 Bank ID
Check Number	11	10	Right Justified, Zero Filled
Issue Date	21	06	Check Date (MMDDYY)
Check Amount	27	10	zero fill, implied decimal
Filler	37	02	blanks
Transaction Code	39	01	0 = Issue 1 = Reversal
Record Code	40	01	'T'

And one **Control Record** for each unique Issue Date:

<i>Field</i>	<i>Position</i>	<i>Length</i>	<i>Notes</i>
Account Number	01	10	first 10 characters of the MAS90 Bank ID
Branch Number	11	04	blanks
Control Count	15	06	Total Number of Issues in Detail record for this Issue Date (RJZF)
Issue Date	21	06	MMDDYY
Control Amount	27	10	Sum of all Issues/ zero fill, implied decimal
Filler	37	03	blanks
Record Code	40	01	'X'

Extended Solutions

US Bank Format

This format calls for a twelve-character bank account number. The first twelve characters of the MAS 90 MAS 200 Bank Account field will be used.

Detail Record

<i>Field</i>	<i>Position</i>	<i>Length</i>	<i>Contents</i>	<i>Description</i>
1	01-02	2	'01'	Record Code (hardcode)
2	03-14	12	Numeric	Bank Account Number
3	15-24	10	Numeric	Check Number
4	25-36	12	\$\$\$\$\$\$cc	Check Amount
5	37-44	8	MMDDYYYY	Check Date
6	45	1	Alphanumeric	Blank or 'V' for Transaction types 'V,' 'R,' and 'X'
7	46-60	15	Blank	
8	61-80	20	Blank	

Total Record

<i>Field</i>	<i>Position</i>	<i>Length</i>	<i>Contents</i>	<i>Description</i>
1	01-02	2	'02'	Record Code (hardcode)
2	03-14	12	Numeric	Bank Account Number
3	15-24	10	Numeric	Total Number of Detail Records
4	25-36	12	\$\$\$\$\$cc	Total Amount
5	37-80	44	Blank	Filler

This is an 80-character record. Decimal is implied. Each file may contain multiple accounts. The detail records will be followed by a total record for each account. Numerics are right-justified, and zero-filled.

US Bank 2 Format – Teller Positive Pay

The Decimal is implied and each Numeric field is RJZF

Detail Record

<i>Field/Column</i>	<i>Position</i>	<i>Length</i>	<i>Contents</i>	<i>MAS90/200</i>
1/A	01-02	2	'01'	Record Code
2/B	03-14	12	Numeric	Bank ID
3/C	15-24	10	Numeric	Serial/Check Number
4/D	25-36	12	\$\$\$\$\$\$\$\$cc	Amount
5/E	37-44	8	MMDDYYYY	Issue Date
6/F	45-45	1	Alpha/Numeric	Blank for 'Issue' or 'V' for all other types
7/G	46-85	40	Alpha/Numeric	Payee Name
8/H	86-125	40	Alpha/Numeric	Blank
9/I	126-145	20	Blank	Filler

Extended Solutions

Total Record

Field/Column	Position	Length	Contents	Description
1/A	01-02	2	'02'	Record Code
2/B	03-14	12	Numeric	Account Number
3/C	15-24	10	Numeric	Total Detail Records
4/D	25-36	12	\$\$\$\$\$\$\$\$\$¢¢	Total Amount
5/E-1	37-145	109	Blank	Filler

Wachovia Format

Header Record

Position	Description	Length	MAS90/200
01	RECONCILIATIONHEADER	20	<literal>
21	Bank Number	04	from Setup
25	Account Number	13	Bank ID from Setup, RJZF
38	Total Dollar Amount of File	12	sum of all non Void Detail records RJZF, no decimal
50	Total Item Count	05	Total Number of Detail records, RJZF
55	Filler	96	<blanks>

Detail Record

Position	Description	Length	MAS90/200
1	Account Number	13	Bank ID, RJZF
14	Check Number	10	RJZF
24	Check Amount	10	RJZF, no decimal
34	Check Date	08	YYYYMMDD
42	Void Indicator	01	<blank> or 'V' for transaction Types: 'R' or 'X'
43	Payee Name	30	Vendor or Employee Name
73	Filler	08	<blank>
81	Payee Name	50	Vendor or Employee Name, left justified, blank fill
131	Filler	20	<blank>

Wachovia II file format

When selected a fixed field length export file is created in the following file layout.

Header Record

Field Description	Start	Length	Type	MAS90/200
Record type	1	20	A	Literal 'RECONCILIATIONHEADER'
Bank Number	21	4	N	Defined in Setup, RJZF
Account Number	25	13	N	Bank ID Number, RJZF
Total Dollar Amount	38	12	N	Sum of Check Amount field in Detail Records RJZF, decimal implied. All records will be summed as whole numbers.
Total Item Count	50	5	N	Total Quantity of Detail Records, RJZF, no Commas
Filler	55	26	A/N	<BLANKS>

Extended Solutions

Detail Record

<i>Field Description</i>	<i>Start</i>	<i>Length</i>	<i>Type</i>	<i>MAS90/200</i>
Account Number	1	13	N	Bank ID Number, RJZF
Check Serial Number	14	10	N	Check Number, RJZF
Check Amount	24	10	N	Check Amount, RJZF, decimal implied
Issue Date	34	8	N	Check Date YYYYMMDD
Void Indicator	42	1	A/N	'V' if Check Type = 'R', else blank
Additional Data	43	15	A/N	Check Payee Name, first 15 characters
Filler	58	23	A/N	blanks

Record Length = 80

RJZF = Right Justified, Zero-Filled

WAMU Format

<i>Position</i>	<i>Field</i>	<i>Comments</i>
1-34	Account Number	left justify, blank fill
35-45	Check Number	RJZF
46-55	Dollar Amount	RJZF, will contain a decimal, but no commas
56-63	Issue Date	MMDDCCYY
64	Issue/Void Indicator	'I' for Issues / 'V' = Cancel or Reversal
65-80	Payee Name	left justified, blank fill

Wells Fargo Format**Sign On Record**

<i>Field Position</i>	<i>Field Description</i>	<i>Comments</i>
1-5	\$\$ADD	hardcode
6	space	
7-9	ID=	hardcode
10-17	RID	from Setup
18	space	
19-22	BID=	hardcode
23-48	BID	from Setup, enclosed in single quotes
49-80	blank	

Header Record

<i>Position</i>	<i>Description</i>	<i>MAS 90</i>	<i>MAS 200</i>
1-6	WRRECV	Hardcode	
7-14	Spaces	(required)	
15-24	Account Number	Bank Account Number	
25-80	Comments	Ignore	

Extended Solutions

Detail Record

<i>Position</i>	<i>Description</i>	<i>MAS 90 MAS 200</i>
1-10	Check Number	Check Number, must be 10 digits, right justified, zero filled
11-16	Issue Date	Check Date mmddyy
17-26	Account Number	Bank Account Number
27-29	Transaction Code	will fill w/what was selected above
30-39	Amount	Dollar Amount of check. Must be 10 digits (\$\$\$\$\$\$cc), right justified, zero-filled
40-51	Comments	Ignore
52-80	unused	Ignore

Trailer Record

<i>Position</i>	<i>Description</i>	<i>MAS 90 MAS 200</i>
1	&	Hardcode
2-15	Spaces	(required)
16-20	Detail Record Count	Total Detail Records. Must be 5 digits, right justified, zero filled
21-23	Spaces	(required)
24-33	Total Amount	Total dollar amount for the Detail Records. Must be 10 digits, (\$\$\$\$\$\$cc), right justified, zero filled
34-80	Spaces	(optional)

Second Trailer Record

<i>Position</i>	<i>Description</i>
1-6	\\\\\\\\
7-80	Spaces

**Wells Fargo II Format
Sign On Record**

<i>Field Position</i>	<i>Field Description</i>	<i>Comments</i>
1-5	\$\$ADD	hardcode
6	space	
7-9	ID=	hardcode
10-17	RID	from Setup
18	space	
19-22	BID=	hardcode
23-48	BID	from Setup, enclosed in single quotes
49-80	blank	

Extended Solutions

Header Record

There should only be only one header record for each file. Multiple accounts are permitted provided that they are grouped by account with a trailer record for each group.

<i>Character Placement</i>	<i>Field Name</i>	<i>Description</i>	<i>Length</i>
1-3	*03	It must be *03	3 characters
4-8	Bank ID	from Setup	5 characters
9-23	Account Number	Account Number right justified, zero filled	15 characters
24	File status	Value 0	1 character

Detail and Trailer Record

There should be only one detail record for each check issued. Multiple accounts are permitted provided they are grouped by account with a trailer record for each group. Each detail record must contain an account number, and all records must be in the same format.

Detail record fields

<i>Character Placement</i>	<i>Field Name</i>	<i>Description</i>	<i>Length</i>
1-10	Check number	Right-justified, zero- filled	10 digits
11-16	Issue date	MMDDYY	6 digits
17-26	Account number	Account number	10 digits
27-29	Transaction code	'320' if Issue '370' if Cancel or Reversal	3 digits
30-39	Amount	(\$\$\$\$\$\$cc) right justified, zero filled.	10 digits
40-79	Payee Name		39 digits
80	Additional Data	blank	1 digit

Transmission account trailer record 1 fields

<i>Character Placement</i>	<i>Field Name</i>	<i>Description</i>	<i>Length</i>
1	&	Must be "& "	1 Character
2-15	Spaces	14 spaces	
16-20	Detail record count	Total detail record count for the account; five digits, right-justified, zero- filled	5 digits
21-23	Spaces	3 spaces	
24-33	Total amount	10 numeric digits, total dollar amount for detail records for the account; (\$\$\$\$\$\$cc), right- justified, zero- filled	10 digits
34- 80	Filler	Filler spaces, optional	47 spaces

Extended Solutions

Wells Fargo III Format

When selected, a comma delimited (.csv) file (with no quotes) will be created with the following file layout.

- Payee Name field is stripped of commas. Valid characters, in addition to normal alpha-numeric characters, include ' " & / \ * () . - = ` _ and \$.
- Check amount includes decimal, but no commas or \$ sign.

Field	Description	Max Length	Req	Format	MAS90/200 data file/field
1	Routing / Transit Number	11	Y	Numeric	From Setup
2	Account Number **	34	Y	String	Bank ID Number
3	Serial Number	10	Y	String	Check No.
4	Issue Date	10	Y	MM-DD-YYYY	Check Date
5	Amount	11	Y	#####.00	BR_Transaction.M4T/CheckAmt
6	Transaction Type	3	Y	Numeric	'370' if BR_Transaction.M4T/CheckType = 'R'; else '320'
7	Optional Data	120	N	String	Payee Name

Blytheco LLC The Premier Provider of Effective Business Software Solutions

Regional Offices

<p>Orange County, California 23161 Mill Creek Drive Laguna Hills, California 92653 Phone: (949) 583.9500 Toll Free: (800) 425.9843 Fax: (949) 583.0649</p> <p>www.blytheco.com</p>	<p>Atlanta, Georgia 1100 Johnson Ferry Road, Ste. 450 Atlanta, Georgia 30342 Phone: (404) 841.6240 Toll Free: (800) 455.1368 Fax: (404) 841.6243</p> <p>solutions@blytheco.com</p>	<p>Sage Software Business Partner of the Year</p> <p>Complete Sage Software Solutions Sage MAS 500 • Sage MAS 200 • Sage MAS 90 Sage BusinessWorks • Sage SalesLogix CRM • ACT! by Sage Sage ABRA HRMS • Sage FAS • Sage MIP Fund Accounting & Fundraising</p> <p>Offices in these cities & states: Atlanta, GA • Chicago, IL • Los Angeles, CA • Orange County, CA • Tampa, FL Colorado • Minnesota • Missouri • New Jersey • Ohio • Oklahoma • Pennsylvania • South Carolina • Tennessee • Texas • Washington</p>
--	--	--

National Presence - Local Touch