
Sales Order Deposits on Receivable Reports

AR-1173

Overview

This Extended Solution adds detail of customer deposits referenced on Sales Orders to the Accounts Receivable Trial Balance and the Aged Invoice Report work files as well as selection options which govern the manner in which they print.



Additional functionality exists if Extended Solution SO-1032: Multiple Customer Deposits on a Sales Order is installed and enabled.

Installation

Before installing this Extended Solution, please verify that the version level(s) printed on the CD label are the same as the version level(s) of the MAS 90 MAS 200 module(s) you are using. For further information, please see the Upgrades and Compatibility section below. Check your Shipping Manifest for a complete list of Extended Solutions shipped.

For detailed installation instructions, please refer to the Sage website at:

http://support.sagesoftwareonline.com/mas/extended_solutions/main.cfm

Installing Your Extended Solutions under Windows

From a CD

If you have the *autorun* function turned on for your PC, the installation program will start up automatically. If not, find the **autorun.exe** file on your CD-ROM drive and double-click it to start the installation program. Follow the on-screen instructions.

From the Sage FTP site

When your Extended Solution is ready to be downloaded, you will receive an email from 'extendedsolutions.na@sage.com' telling you that it is ready. The email will contain the Customer Name, Cross Reference, a case-sensitive Password, a link via which you can download your Extended Solution, instructions and a Shipping Manifest. If you have any problems with this order, please email extendedsolutions.na@sage.com and we will assist you during normal business hours.

Extended Solutions Control Center

Installing any Extended Solution will add an Extended Solutions Control Center to the MAS 90 MAS 200 Library Master Utilities menu. When you open the Control Center, the following options will be available:

- Extended Solutions Manuals
- Remove Extended Solutions
- Unlock Extended Solutions
- Merge Installation Files

Extended Solutions

- Extended Solutions Setup options

Custom Office

If you customize your MAS 90 MAS 200, then you must run the Update Utility *every time* you install this Extended Solution.

Setup

Upon completion of software installation, you will need to access Extended Solutions Setup from the Accounts Receivable Setup menu. Select this part number and the Setup screen for this Extended Solution will appear (Figure 1). Check the 'Enable Extended Solution' box to activate this Extended Solution. The manual for this Extended Solution can be viewed by clicking the 'Manual' button next to the 'Enable Extended Solution' check box. It can also be viewed via the Extended Solutions Control Center (see Installation, above).

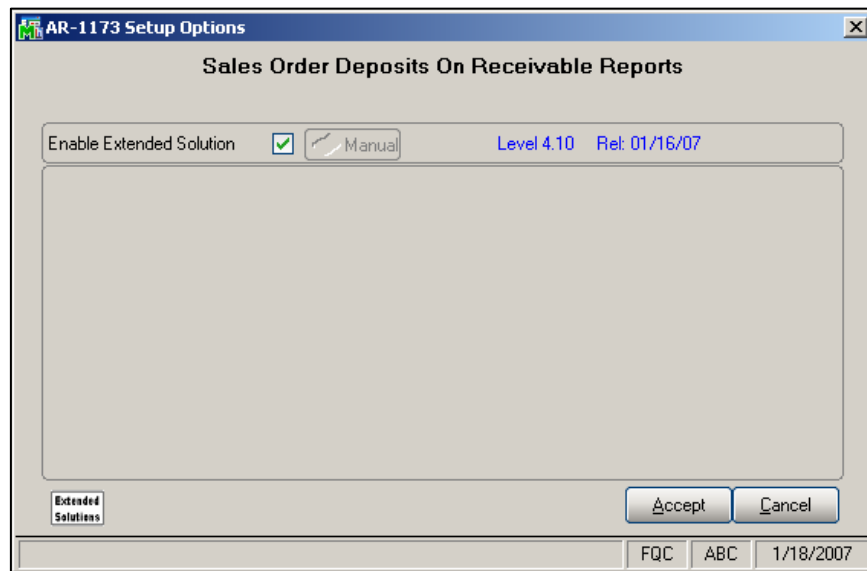


Figure 1

You should visit this Setup screen after each upgrade or reinstallation of this Extended Solution.

Role Maintenance

The following Task has been added to Accounts Receivable, Setup Options:

- Extended Solutions Setup

Please review your security setup in Role Maintenance and make appropriate changes.

Operation

Aged Invoice Report

An 'S/O Dep' button has been added to the report selection screen (Figure 2), to 'Include S/O Deposit Information' (Figure 3). If you check this box and select either 'Invoice' or 'Detail' to the 'Report Detail Option' prompt, a block of Sales Order Deposit information will print between the standard customer information and the invoice detail. The block contains one line per open Sales Order that has a deposit. The following information will be included: Sales Order Number, Sales Order Date, Check Number and Deposit Amount (Figure 4).

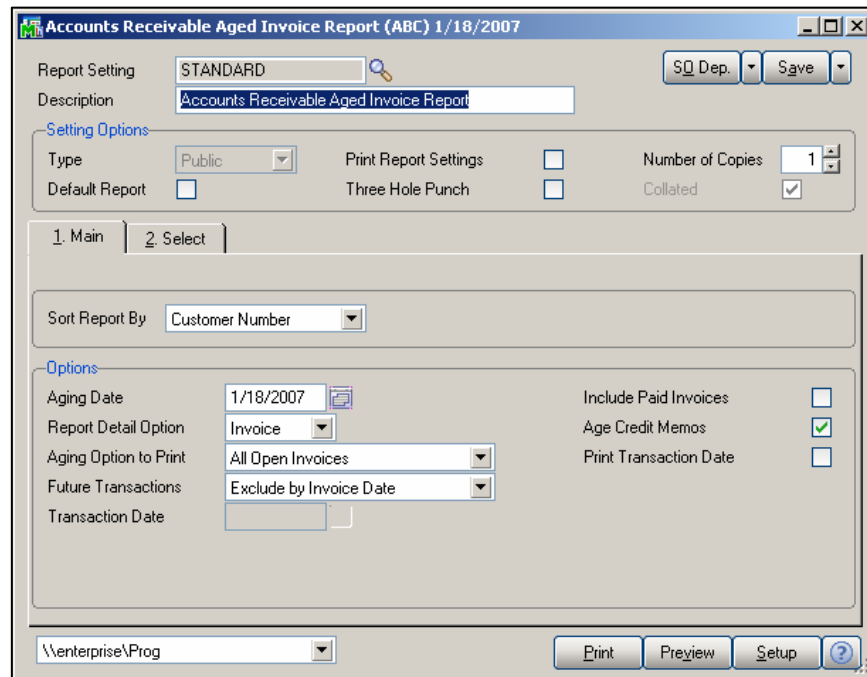


Figure 2

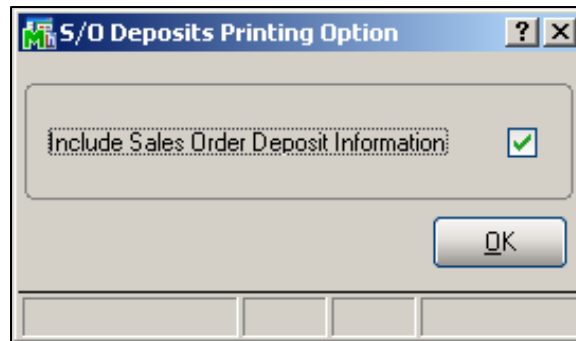


Figure 3

Accounts Receivable Aged Invoice Report											
Sorted by Customer Number											
All Open Invoices - Aged as of 12/12/2010											
											ABC Distribution and Service Corp. (ABC)
Division Number: 01											
Customer	Invoice	Due Dates		Discount	Balance	Current	30 Days	60 Days	90 Days	120 Days	Days
Invoice Date	Number	Invoice	Discount	Amount							Delq
ABF	American Business Futures		Contact:			Phone: (414) 655-4797		Extension: 219		Credit Limit: 120,000.00	
Advances	S/O #: 0000174	S/O Date: 12/10/2007		Check #: 12	Adv Amount: 500.00						
	S/O #: 0000174	S/O Date: 12/10/2007		Check #: 13	Adv Amount: 250.00						
	S/O #: 0000174	S/O Date: 12/10/2007		Check #:	Adv Amount: 250.00						
	S/O #: 0000175	S/O Date: 12/14/2007		Check #: 1122334455	Adv Amount: 84.00		Adv Total: 1,084.00				
1/31/2010	0000122-IN	3/30/2010		0.00	950.00	0.00	0.00	0.00	0.00	950.00	257
3/1/2010	0100054-IN	4/1/2010		0.00	407.40	0.00	0.00	0.00	0.00	407.40	255
3/31/2010	0000141-IN	4/30/2010		0.00	1,179.69	0.00	0.00	0.00	0.00	1,179.69	226
4/30/2010	0000190-IN	5/30/2010		0.00	85.00	0.00	0.00	0.00	0.00	85.00	196
4/30/2010	APR0001-FC	4/30/2010		0.00	43.89	0.00	0.00	0.00	0.00	43.89	226
5/10/2010	0100055-CM			0.00	81.49	0.00	0.00	0.00	0.00	81.49	
5/15/2010	0100033-IN	6/14/2010		0.00	613.05	0.00	0.00	0.00	0.00	613.05	191
5/15/2010	0100034-IN	6/14/2010		0.00	2,467.61	0.00	0.00	0.00	0.00	2,467.61	191
5/30/2010	0100049-IN	6/29/2010		0.00	130.00	0.00	0.00	0.00	0.00	130.00	168
5/31/2010	0100041-IN	6/30/2010		0.00	39.20	0.00	0.00	0.00	0.00	39.20	165
Customer ABF Totals:				0.00	5,732.36	0.00	0.00	0.00	0.00	5,732.36	
Balance less Advances:					4,649.36	0.00	0.00	0.00	0.00	4,649.36	
AVNET	Avnet Processing Corp		Contact:			Phone: (414) 225-2635		Extension:		Credit Limit: 7,500.00	
Advances	S/O #: 0000176	S/O Date: 12/14/2007		Check #: 9999939iii	Adv Amount: 404.00						
	S/O #: 0000176	S/O Date: 12/14/2007		Check #: AASSFFGGGG	Adv Amount: 200.20		Adv Total: 604.20				
3/31/2010	0000142-IN	4/30/2010		0.00	1,751.00	0.00	0.00	0.00	0.00	1,751.00	226
4/30/2010	APR0002-FC	4/30/2010		0.00	44.12	0.00	0.00	0.00	0.00	44.12	226
5/21/2010	0100043-IN	6/20/2010		0.00	935.25	0.00	0.00	0.00	0.00	935.25	175
5/29/2010	0000170-IN	6/29/2010		0.00	4,041.00	0.00	0.00	0.00	0.00	4,041.00	167
5/31/2010	0000192-IN	6/30/2010		0.00	606.00	0.00	0.00	0.00	0.00	606.00	165
*** Credit Limit Exceeded ***											
Customer AVNET Totals:				0.00	7,377.37	0.00	0.00	0.00	0.00	7,377.37	
Balance less Advances:					6,773.17	0.00	0.00	0.00	0.00	6,773.17	

Figure 4

If SO-1032: *Customer Deposits in Sales Order* is installed and enabled, then detail of multiple sales order deposits, deposit number and deposit date, will be printed.

Customers who would not normally be included on the report (i.e., those who have no open receivables) but who do have open Sales Orders with Deposits, will be included. The standard Customer line will print followed by the Sales Order block described above.

Deposit amounts will be aged according to Sales Order Date. If SO-1032 is enabled, deposit amounts will be aged individually by deposit date. Deposit amounts will be written to the Balance field and aging fields as negatives.

An Accounts Receivable Aged Invoice report has been provided with the Sales Order Deposit information. It is called **AR1173_001AR_AgedInvoiceReport.rpt** and can be found in the '...\mas90\reports' directory. You will need to create a new Report Setting for your Aged Invoice Report. In the report selection screen, select 'Save As' from the Save drop down menu, enter a new report setting name, then click the 'Designer' button, close Crystal Reports, and save the new report setting. Then copy AR1173_001AR_AgedInvoiceReport.rpt

Extended Solutions

to the new report setting directory (e.g Example), see Figure 5 and rename it to AR_AgedInvoiceReport.rpt.

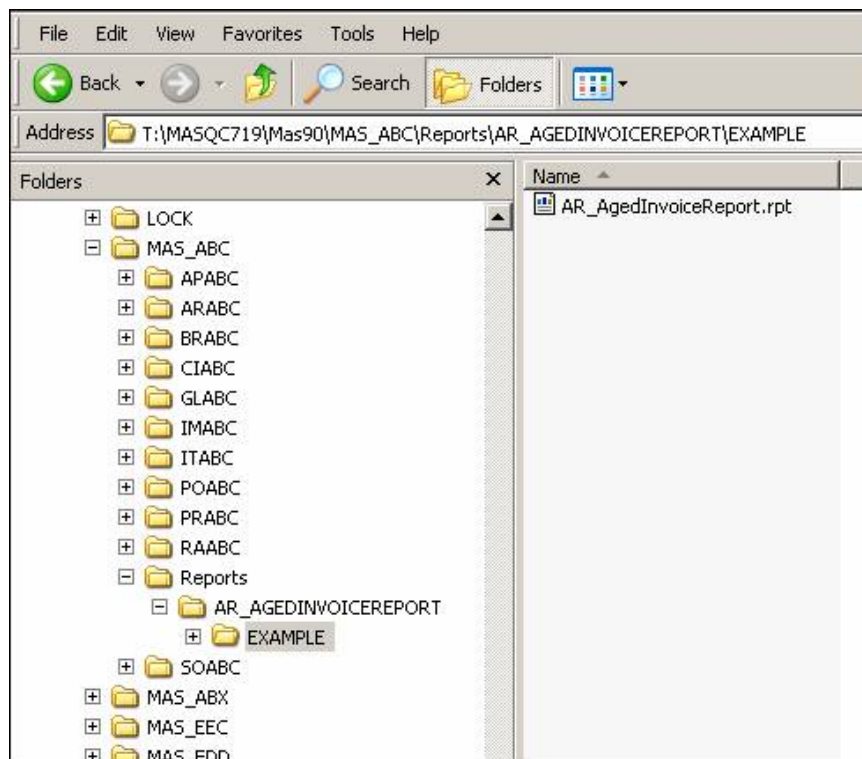


Figure 5

Or you can modify the standard *Accounts Receivable Aged Invoice* report to show Sales Order Deposit information. Sales Order deposits will be written to the work file as Type "1" records. Add a new Detail Section to hold the deposit details. Copy these fields from the right side of Detail Section "A": Balance, CurrentAmt, AgingAmt1, AgingAmt2, AgingAmt3, and @Aging4OrRetentionAmt. On the left side include the Deposit fields you would like to see on the report that were added to the work table. See ODBC dictionary section for the list of new fields.

Go into the Selection Expert for Detail Section "A" and select the formula editor for Suppress and modify this formula:

```
IF {@DetailOption} = "S" or {AR_AgedInvoiceReportWrk.Type} = "1" THEN
    formula = true
ELSE
    ...
```

Extended Solutions

Go into the Selection Expert for the new Detail Section, select the formula editor for Suppress, and paste the Suppression formula from Section "A" and modify it:

```
IF {@DetailOption} = "S" or {AR_AgedInvoiceReportWrk.Type} <> "1" THEN
    formula = true
ELSE
    ...
```

Trial Balance Report

A new run time selection option has been added, via the 'SO Dep' button (Figure 6) to 'Include Sales Order Deposit Information' (Figure 3). If you check this box, Sales Order deposits will be written to the work file with blank Invoice No and Invoice Type set to 'DP'.

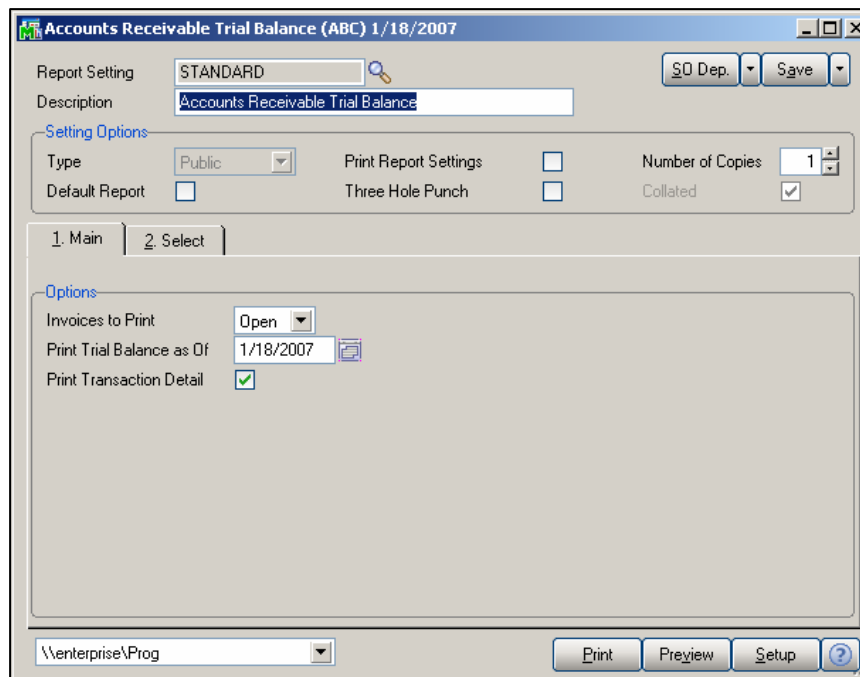


Figure 6

Customers who would not normally be included on the report (i.e., those who have no open receivables) but who do have open Sales Orders with Deposits, will be included.

To modify the report to show Sales Order Deposit information, add a new Detail Section to hold the deposit details. Include the Deposit fields you would like to see on the report in the new Detail Section. See ODBC dictionary section for the list of new fields.

Extended Solutions

Go into the Selection Expert for Detail Section "A" and select the formula editor for Suppress and add this formula:

```
formula = {AR_TrialBalanceWrk.InvoiceType}="DP"
```

Go into the Selection Expert for the new Detail Section and select the formula editor for Suppress and add this formula:

```
formula = {AR_TrialBalanceWrk.InvoiceType} <> "DP"
```

ODBC Dictionary

The files listed below have been added, or changed, in the ODBC Dictionaries by this Extended Solution for Crystal Reports purposes.

FileFields

AR_AgedInvoiceReportWrk	SalesOrderNo_001\$ SalesOrderDate_001\$ PaymentType_001\$ PaymentMethod_001\$ DepositDate_001\$ DepositNo_001\$ CheckNo_001\$, ReferenceNo_001\$ Last4UnencryptedCCNos_001\$ DepositAmt_001
AR_TrialBalanceWrk	SalesOrderNo_001\$ SalesOrderDate_001\$ PaymentType_001\$ PaymentMethod_001\$, DepositDate_001\$ DepositNo_001\$ CheckNo_001\$ ReferenceNo_001\$ Last4UnencryptedCCNos_001\$ DepositAmt_001

Be aware that the ODBC Dictionaries may contain other files and data fields that will be unavailable without their corresponding Extended Solutions installed.

What's New

With the 12-18-07 release

- Now ships AR1173_001AR_AgedInvoiceReport.rpt

SAGE MAS 90

SAGE MAS 200

Extended Solutions

Upgrades and Compatibility

The installation CD is labeled with the version of the MAS 90 MAS 200 module for which this Extended Solution was prepared. This Extended Solution will check its compatibility with the appropriate MAS 90 MAS 200 modules and will be disabled if an incompatibility is found. If you upgrade your MAS 90 MAS 200 modules, this Extended Solution must be upgraded as well. Your MAS 90 MAS 200 dealer can supply this upgrade.

Documentation

Only changes made to the standard operation of MAS 90 MAS 200 have been documented in this manual. Operations not documented in this manual are standard procedures of MAS 90 MAS 200 processing. Standard MAS 90 MAS 200 processes, data entry screens, inquiry screens, reports, updates, etc., have not been changed unless addressed in this document.

Parts of this document may refer to the *Specific Purpose Rule*. When referenced, the described feature was developed for a specific client to its specifications and may not conform to generally accepted MAS 90 MAS 200 standards and procedures. These features may or may not benefit you in your application of MAS 90 MAS 200.

Acknowledgments

© 2005 Sage Software, Inc. All rights reserved. Sage Software, MAS 90 and MAS 200 are registered trademarks or trademarks of Sage Software, Inc. All other trademarks are the property of their respective owners.



The Premier Provider of Effective Business Software Solutions

Regional Offices

Orange County, California 23161 Mill Creek Drive Laguna Hills, California 92653 Phone: (949) 583.9500 Toll Free: (800) 425.9843 Fax: (949) 583.0649 www.blytheco.com	Atlanta, Georgia 1100 Johnson Ferry Road, Ste. 450 Atlanta, Georgia 30342 Phone: (404) 841.6240 Toll Free: (800) 455.1368 Fax: (404) 841.6243 solutions@blytheco.com
---	---

Sage Software Business Partner of the Year

Complete Sage Software Solutions
Sage MAS 500 • Sage MAS 200 • Sage MAS 90
Sage BusinessWorks • Sage SalesLogix CRM • ACT! by Sage
Sage ABRA HRMS • Sage FAS • Sage MIP Fund Accounting & Fundraising

Offices in these cities & states:
Atlanta, GA • Chicago, IL • Los Angeles, CA • Orange County, CA • Tampa, FL
Colorado • Minnesota • Missouri • New Jersey • Ohio • Oklahoma • Pennsylvania
• South Carolina • Tennessee • Texas • Washington

National Presence - Local Touch