

Automatic Next Vendor Number

AP-1102

Overview

This Extended Solution creates an Automatic Next Vendor Number option in Accounts Payable Vendor Maintenance, Accounts Payable Invoice Data Entry and Accounts Payable Manual Check Entry.

Installation

Before installing this Extended Solution, please verify that the version level(s) printed on the CD label are the same as the version level(s) of the MAS 90 MAS 200 module(s) you are using. For further information, please see the Upgrades and Compatibility section below. Check your Shipping Manifest for a complete list of Extended Solutions shipped.

For detailed installation instructions, please refer to the Sage website at:

http://support.sagesoftwareonline.com/mas/extended_solutions/main.cfm

Installing Your Extended Solutions under Windows From a CD

If you have the *autorun* function turned on for your PC, the installation program will start up automatically. If not, find the **autorun.exe** file on your CD-ROM drive and double-click it to start the installation program. Follow the on-screen instructions.

From the Sage FTP site

When your Extended Solution is ready to be downloaded, you will receive an email from 'extendedsolutions.na@sage.com' telling you that it is ready. The email will contain the Customer Name, Cross Reference, a case-sensitive Password, a link via which you can download your Extended Solution, instructions, and a Shipping Manifest. If you have any problems with this order, please email extendedsolutions.na@sage.com and we will assist you during normal business hours.

Extended Solutions Control Center

Installing any Extended Solution will add an Extended Solutions Control Center to the MAS 90 MAS 200 Library Master Utilities menu. When you open the Control Center, the following options will be available:

- Extended Solutions Manuals
- Remove Extended Solutions
- Unlock Extended Solutions
- Merge Installation Files
- Extended Solutions Setup options

Extended Solutions

Setup

Upon completion of software installation, you will need to access Extended Solutions Setup from the Accounts Payable Setup menu. Select this part number and the Setup screen for this Extended Solution will appear (Figure 1). Check the 'Enable Extended Solution' box to activate this Extended Solution. The manual for this Extended Solution can be viewed by clicking the 'Manual' button next to the 'Enable Extended Solution' check box. It can also be viewed via the Extended Solutions Control Center (see Installation, above).

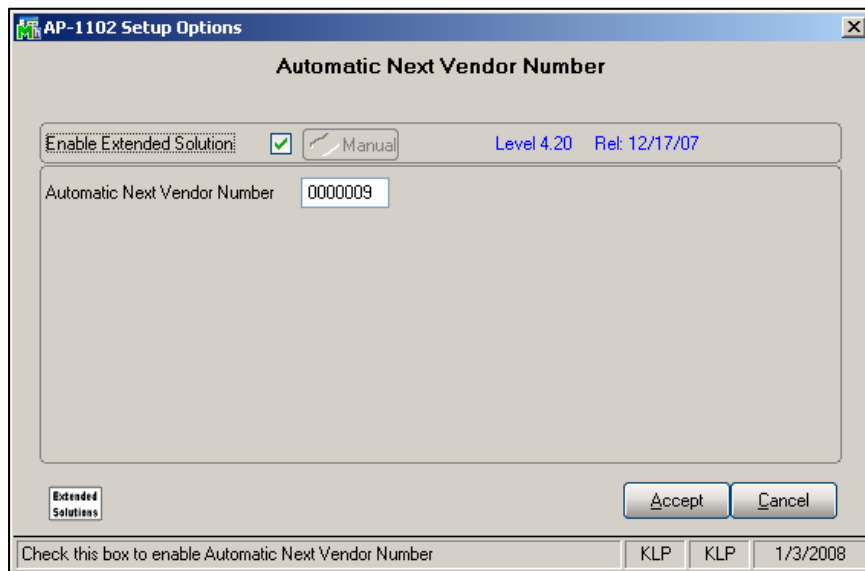


Figure 1

Answer the following prompt:

AUTOMATIC NEXT VENDOR NUMBER: Defaults to '0000001', but can be overridden, however must be numeric.

Operations

A '#' button has been added next to the Vendor Number field in Vendor Maintenance (Figure 2), A/P Manual Check Entry and A/P Invoice Data Entry. If A/P is not divisionalized, the program will pull the current value from the 'Automatic Next Vendor Number' field in Setup and advance the cursor to the Vendor Name field of Vendor Maintenance or Vendor Maintenance on the fly.

Extended Solutions

Figure 2

If Accounts Payable is divisionalized, you will be prompted for a Division Number, then returned to the Vendor Name field in Vendor Maintenance or Vendor Maintenance on the fly with the Vendor Number set to the Division plus the value in Setup.

Figure 3

Each time an Automatic Next Vendor Number is pulled from Setup, the Setup value will increment.

Upgrades and Compatibility

The installation CD is labeled with the version of the MAS 90 MAS 200 module for which this Extended Solution was prepared. This Extended Solution will check its compatibility with the appropriate MAS 90 MAS 200 modules and will be disabled if an incompatibility is found. If you upgrade your MAS 90 MAS 200 modules, this Extended Solution must be upgraded as well. Your MAS 90 MAS 200 dealer can supply this upgrade.

Documentation

Only changes made by Sage Software, Inc. to the standard operation of Sage Software, Inc. MAS 90 MAS 200 have been documented in this manual. Operations not documented in this manual are standard procedures of MAS 90 MAS 200 processing. Standard MAS 90 MAS 200 processes, data entry screens, inquiry screens, reports, updates, etc., have not been changed unless addressed in this document.

Parts of this document may refer to the *Specific Purpose Rule*. When referenced, the described feature was developed for a specific client to its specifications and may not conform to generally accepted MAS 90 MAS 200 standards and procedures. These features may or may not benefit you in your application of MAS 90 MAS 200.

Acknowledgments

© 2008 Sage Software, Inc. All rights reserved. Sage Software, MAS 90, and MAS 200 are registered trademarks or trademarks of Sage Software, Inc. All other trademarks are the property of their respective owners.

Blytheco LLC The Premier Provider of Effective Business Software Solutions

Regional Offices		Sage Software Business Partner of the Year
Orange County, California 23161 Mill Creek Drive Laguna Hills, California 92653 Phone: (949) 583.9500 Toll Free: (800) 425.9843 Fax: (949) 583.0649 www.blytheco.com	Atlanta, Georgia 1100 Johnson Ferry Road, Ste. 450 Atlanta, Georgia 30342 Phone: (404) 841.6240 Toll Free: (800) 455.1368 Fax: (404) 841.6243 solutions@blytheco.com	Complete Sage Software Solutions Sage MAS 500 • Sage MAS 200 • Sage MAS 90 Sage BusinessWorks • Sage SalesLogix CRM • ACT! by Sage Sage ABRA HRMS • Sage FAS • Sage MIP Fund Accounting & Fundraising Offices in these cities & states: Atlanta, GA • Chicago, IL • Los Angeles, CA • Orange County, CA • Tampa, FL Colorado • Minnesota • Missouri • New Jersey • Ohio • Oklahoma • Pennsylvania • South Carolina • Tennessee • Texas • Washington

National Presence - Local Touch