

## Enhanced Vendor Maintenance

AP-1088

### Overview

This Extended Solution to the Accounts Payable module prompts the user for a password when an attempt is made to change the Vendor Name field in A/P Vendor Maintenance. Changes made to the field during the setup of a new Vendor will not require a password.

### Installation

Before installing this Extended Solution, please verify that the version level(s) printed on the CD label are the same as the version level(s) of the MAS 90 MAS 200 module(s) you are using. For further information, please see the Upgrades and Compatibility section below. Check your Shipping Manifest for a complete list of Extended Solutions shipped.

For detailed installation instructions, please refer to the Sage website at:

[http://support.sagesoftwareonline.com/mas/extended\\_solutions/main.cfm](http://support.sagesoftwareonline.com/mas/extended_solutions/main.cfm)

### *Installing Your Extended Solutions under Windows*

#### **From a CD**

If you have the *autorun* function turned on for your PC, the installation program will start up automatically. If not, find the **autorun.exe** file on your CD-ROM drive and double-click it to start the installation program. Follow the on-screen instructions.

#### **From the Sage FTP site**

When your Extended Solution is ready to be downloaded, you will receive an email from 'extendedsolutions.na@sage.com' telling you that it is ready. The email will contain the Customer Name, Cross Reference, a case-sensitive Password, a link via which you can download your Extended Solution, instructions, and a Shipping Manifest. If you have any problems with this order, please email [extendedsolutions.na@sage.com](mailto:extendedsolutions.na@sage.com) and we will assist you during normal business hours.

### *Extended Solutions Control Center*

Installing any Extended Solution will add an Extended Solutions Control Center to the MAS 90 MAS 200 Library Master Utilities menu. When you open the Control Center, the following options will be available:

- Extended Solutions Manuals
- Remove Extended Solutions
- Unlock Extended Solutions
- Merge Installation Files
- Extended Solutions Setup options

## Extended Solutions

**Custom Office**

If you customize your MAS 90 MAS 200, then you must run the Update Utility *every time* you install this Extended Solution.

**Setup**

Once the disk is installed, you will need to access the General Ledger Setup menu screen. Then choose the menu option for Extended Solutions Setup. Check the 'Enable Extended Solution' box to activate this Extended Solution (Figure 1). The manual for this Extended Solution, if it has been installed, can be viewed by clicking the 'Manual' button next to the 'Enable Extended Solution' check box. It can also be viewed via the Extended Solutions Control Center (see Installation, above).

**PASSWORD TO CHANGE VENDOR NAME:** Enter the password that will be required in order to change the Vendor Name field during A/P Vendor Maintenance.

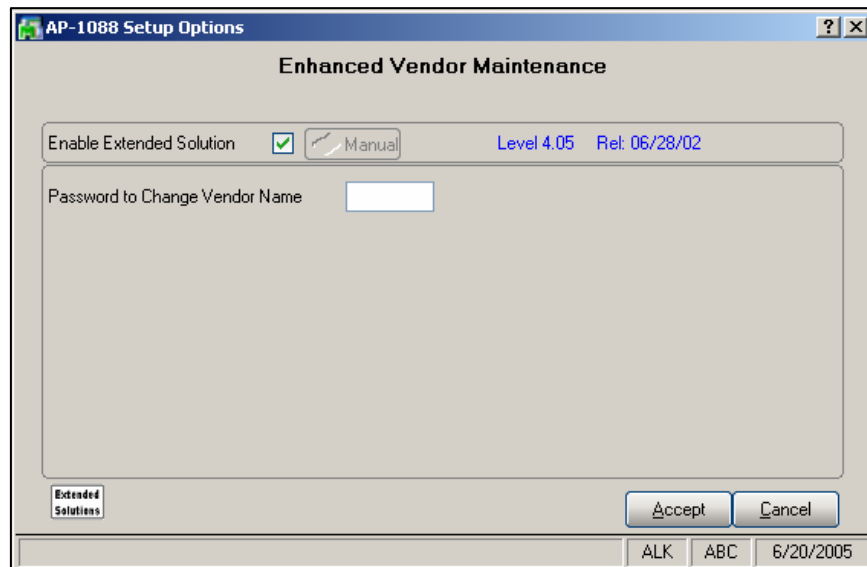


Figure 1

You should visit this Setup screen after each upgrade or reinstallation of this Extended Solution.

**Operation**

Any user attempting to change the Vendor Name field in A/P Vendor Maintenance will be prompted for the password entered in the Setup for this Extended Solution (Figure 2). Changes made to the field during the setup of a new Vendor will not require the password.

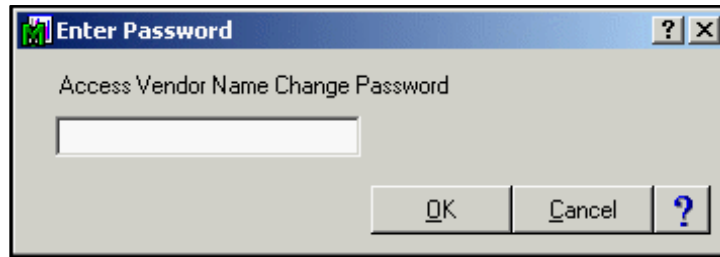


Figure 2

### Upgrades and Compatibility

The installation CD is labeled with the version of the MAS 90 MAS 200 module for which this Extended Solution was prepared. This Extended Solution will check its compatibility with the appropriate MAS 90 MAS 200 modules and will be disabled if an incompatibility is found. If you upgrade your MAS 90 MAS 200 modules, this Extended Solution must be upgraded as well. Your MAS 90 MAS 200 dealer can supply this upgrade.

### Documentation

Only changes made by the Sage Associates, Inc. to the standard operation of Sage Software, Inc. MAS 90 MAS 200 have been documented in this manual. Operations not documented in this manual are standard procedures of MAS 90 MAS 200 processing. Standard MAS 90 MAS 200 processes, data entry screens, inquiry screens, reports, updates, etc., have not been changed unless addressed in this document.

Parts of this document may refer to the *Specific Purpose Rule*. When referenced, the described feature was developed for a specific client to its specifications and may not conform to generally accepted MAS 90 MAS 200 standards and procedures. These features may or may not benefit you in your application of MAS 90 MAS 200.

### Acknowledgments

© 2005 Sage Software, Inc. All rights reserved. Sage Software, MAS 90, and MAS 200 are registered trademarks or trademarks of Sage Software, Inc. All other trademarks are the property of their respective owners.

|   |   |   |  |
|---|---|---|--|
|    |   | The Premier Provider of Effective Business Software Solutions   |  |
| <b>Regional Offices</b>   |   | <b>Sage Software Business Partner of the Year</b>   |  |
| <b>Orange County, California</b><br>23151 Mill Creek Drive<br>Laguna Hills, California 92653<br>Phone: (949) 583.9500<br>Toll Free: (800) 425.9843<br>Fax: (949) 583.0849<br><a href="http://www.blytheco.com">www.blytheco.com</a> | <b>Atlanta, Georgia</b><br>1100 Johnson Ferry Road, Ste. 450<br>Atlanta, Georgia 30342<br>Phone: (404) 841.6240<br>Toll Free: (800) 455.1368<br>Fax: (404) 841.6243<br><a href="mailto:solutions@blytheco.com">solutions@blytheco.com</a> | <b>Complete Sage Software Solutions</b><br>Sage MAS 500 • Sage MAS 200 • Sage MAS 90<br>Sage BusinessWorks • Sage SalesLogix CRM • ACT! by Sage<br>Sage ABRA HRMS • Sage FAS • Sage MIP Fund Accounting & Fundraising   |  |
|   |   | <b>Offices in these cities &amp; states:</b><br>Atlanta, GA • Chicago, IL • Los Angeles, CA • Orange County, CA • Tampa, FL<br>Colorado • Minnesota • Missouri • New Jersey • Ohio • Oklahoma • Pennsylvania<br>• South Carolina • Tennessee • Texas • Washington |  |
| National Presence - Local Touch   |   |   |  |