

---

## Division Number by Distribution Line

AP-1046

### Overview

This Extended Solution adds the ability to 'allocate' distribution lines on Accounts Payable invoices to multiple divisions. Individual invoices, one invoice per division, are then automatically created.



Sage Software Extended Solution AP-1043, *Distribution Table for Invoice Entry*, provides additional functionality for this Extended Solution.



This Extended Solution will not function if your Accounts Payable module is integrated with the Job Cost module or if A/P setup option 'Calculate Sales Tax in A/P Data Entry' is checked.

### Installation

Before installing this Extended Solution, please verify that the version level(s) printed on the CD label are the same as the version level(s) of the MAS 90 MAS 200 module(s) you are using. For further information, please see the Upgrades and Compatibility section below. Check your Shipping Manifest for a complete list of Extended Solutions shipped.

For detailed installation instructions, please refer to the Sage website at:

[http://support.sagesoftwareonline.com/mas/extended\\_solutions/main.cfm](http://support.sagesoftwareonline.com/mas/extended_solutions/main.cfm)

### ***Installing Your Extended Solutions under Windows From a CD***

If you have the *autorun* function turned on for your PC, the installation program will start up automatically. If not, find the **autorun.exe** file on your CD-ROM drive and double-click it to start the installation program. Follow the on-screen instructions.

### **From the Sage FTP site**

When your Extended Solution is ready to be downloaded, you will receive an email from 'extendedsolutions.na@sage.com' telling you that it is ready. The email will contain the Customer Name, Cross Reference, a case-sensitive Password, a link via which you can download your Extended Solution, instructions, and a Shipping Manifest. If you have any problems with this order, please email [extendedsolutions.na@sage.com](mailto:extendedsolutions.na@sage.com) and we will assist you during normal business hours.

### ***Extended Solutions Control Center***

Installing any Extended Solution will add an Extended Solutions Control Center to the MAS

## Extended Solutions

90 MAS 200 Library Master Utilities menu. When you open the Control Center, the following options will be available:

- Extended Solutions Manuals
- Remove Extended Solutions
- Unlock Extended Solutions
- Merge Installation Files
- Extended Solutions Setup options

**Custom Office**

If you customize your MAS 90 MAS 200, then you must run the Update Utility *every time* you install this Extended Solution.

**Setup**

Upon completion of software installation, you will need to access Extended Solutions Setup from the Accounts Payable Setup menu. Select this part number and the Setup screen for this Extended Solution will appear (Figure 1). Check the 'Enable Extended Solution' box to activate this Extended Solution. The manual for this Extended Solution can be viewed by clicking the 'Manual' button next to the 'Enable Extended Solution' check box. It can also be viewed via the Extended Solutions Control Center (see Installation, above).

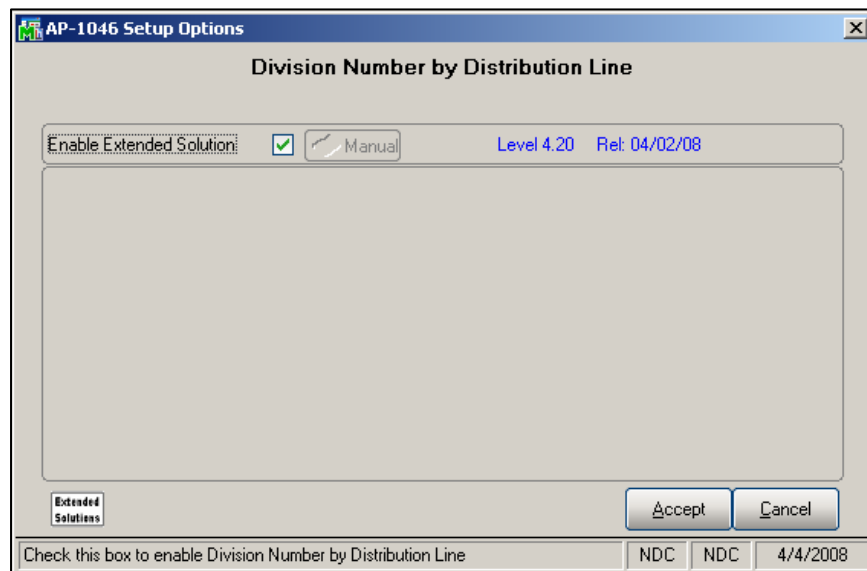


Figure 1

You should visit this Setup screen after each upgrade or reinstallation of this Extended Solution.

**Role Maintenance**

The following Task has been added to Accounts Payable, Setup Options:

- Extended Solutions Setup

Please review your security setup in Role Maintenance and make appropriate changes.

**Operation***Accounts Payable Invoice Data Entry*

The Division Field is initially blank (indicating the field will default to the current division).

You can enter any on-file A/P Division Number (Figure 2) or you can press the Lookup button to list available on-file A/P Division Numbers.

	G/L Account	Amount	Comment	Division
1	525-00-03	40.00		00
2	530-00-03	60.00		01
3		.00		

**Figure 2**

The division you enter will be checked for the following:

- The Vendor Number (last 7 digits) must be on-file for the division.
- The invoice may not already exist in the division.

*Invoice Creation*

If the program detects at least one Division Number not matching the Division Number of the vendor for the current invoice, the additional invoice(s) will be created as you exit the invoice. One additional invoice will automatically be created for each unique Division Number referenced in the lines section of the original invoice. The fields on the additional invoices will be as follows:

## Extended Solutions

- The Invoice Number referenced on each additional invoice will be the same as the original invoice as will the Terms Code, Due Date, Invoice Date, Discount Due Date, Hold Payment, Separate Check, and Header Comment.
- The Vendor Number referenced on each additional invoice will be constructed by joining the Division Number from the line with the vendor number (less division) from the original invoice.
- The additional invoices will each contain the distribution lines associated with their vendors' division from the original invoice.
- The Invoice Amount will be equal to the sum of the new distribution lines.
- The Net Invoice Amount will be calculated as the same percentage of the Invoice Amount as was referenced on the original invoice.
- The Discount Amount will be calculated using the Terms Code, Invoice Amount, and Net Invoice Amount.

The additional invoices will be created in the same batch as the original invoice if A/P Batch Processing is enabled.

If the invoice lines are generated automatically by AP-1043, a warning message will be issued and the invoice line will not be added if:

- The Vendor Number (last 7 digits) is not on file for the division.
- The Invoice Number already exists in that division.

Once created, the invoices are 'normal' Accounts Payable invoices, as if you keyed them in manually. The invoices may be individually edited or deleted. The Invoice Register may be printed and updated using standard MAS 90 MAS 200 options.

If you have AP-1043, *Distribution Table for Invoice Entry*, installed, you can specify the Division Number as an attribute of the distribution table. Please see AP-1043 product manual for more information on this functionality.

### ODBC Dictionary

The files listed below have been added or changed in the ODBC Dictionaries by this Extended Solution for Crystal Reports purposes.

<i>File:</i>	<i>Fields:</i>
AP_InvoiceDetail	APDivisionNo_001

Be aware that the ODBC Dictionaries may contain other files and data fields that will be unavailable without their corresponding Extended Solutions installed.

## Extended Solutions

**What's New**

With the 04-16-08 release:

- Converted to the Business Framework

**Upgrades and Compatibility**

The installation CD is labeled with the version of the MAS 90 MAS 200 module for which this Extended Solution was prepared. This Extended Solution will check its compatibility with the appropriate MAS 90 MAS 200 modules and will be disabled if an incompatibility is found. If you upgrade your MAS 90 MAS 200 modules, this Extended Solution must be upgraded as well. Your MAS 90 MAS 200 dealer can supply this upgrade.

**Documentation**

Only changes made by Sage Software, Inc. to the standard operation of Sage Software, Inc. MAS 90 MAS 200 have been documented in this manual. Operations not documented in this manual are standard procedures of MAS 90 MAS 200 processing. Standard MAS 90 MAS 200 processes, data entry screens, inquiry screens, reports, updates, etc., have not been changed unless addressed in this document.

Parts of this document may refer to the *Specific Purpose Rule*. When referenced, the described feature was developed for a specific client to their specifications and may not conform to generally accepted MAS 90 MAS 200 standards and procedures. These features may or may not benefit you in your application of MAS 90 MAS 200.

**Acknowledgments**

© 2008 Sage Software, Inc. All rights reserved. Sage Software, MAS 90 and MAS 200 are registered trademarks or trademarks of Sage Software, Inc. All other trademarks are the property of their respective owners.

		The Premier Provider of Effective Business Software Solutions	
<b>Regional Offices</b>			
Orange County, California 23161 Mill Creek Drive Laguna Hills, California 92653 Phone: (949) 583.9500 Toll Free: (800) 425.9843 Fax: (949) 583.0649 <a href="http://www.blytheco.com">www.blytheco.com</a>	Atlanta, Georgia 1100 Johnson Ferry Road, Ste. 450 Atlanta, Georgia 30342 Phone: (404) 841.6240 Toll Free: (800) 455.1968 Fax: (404) 841.6243 <a href="mailto:solutions@blytheco.com">solutions@blytheco.com</a>	<b>Sage Software Business Partner of the Year</b> <b>Complete Sage Software Solutions</b> Sage MAS 500 • Sage MAS 200 • Sage MAS 90 Sage BusinessWorks • Sage SalesLogix CRM • ACT! by Sage Sage ABRA HRMS • Sage FAS • Sage MIP Fund Accounting & Fundraising <b>Offices in these cities &amp; states:</b> Atlanta, GA • Chicago, IL • Los Angeles, CA • Orange County, CA • Tampa, FL Colorado • Minnesota • Missouri • New Jersey • Ohio • Oklahoma • Pennsylvania • South Carolina • Tennessee • Texas • Washington	
National Presence - Local Touch			